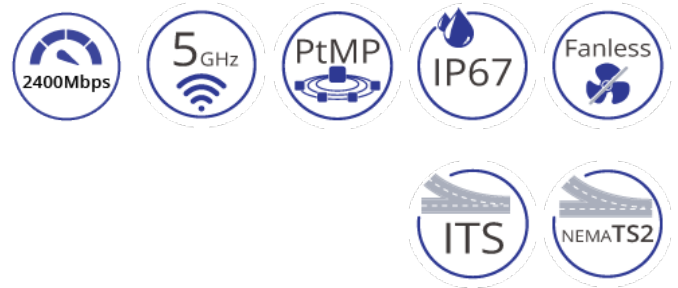
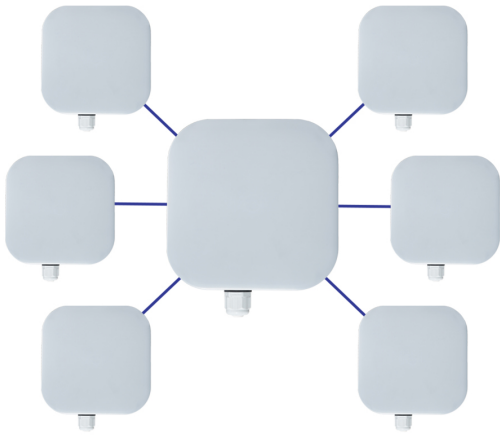


EasyLink Pro MP Series

2400 Mbps Preconfigured Multipoint IP67 Wireless Bridge Kit



Overview

The EasyLink Pro MP series is a high-speed pre-configured Point to Multipoint Bridge kit that allows for connecting up to 6 sets of remote locations wirelessly up to 1.5 mile away. EasyLink Pro MP's simple setup allows you to connect locations by mounting the hardware, powering them on, and aligning the units using the built-in alignment LEDs. Each kit contains one central bridge unit plus two/four/six auxiliary units that connect automatically using a highly secure, unique, and hidden SSID and randomly generated passphrase to keep your the equipment secure right out of the box. There is no need for any setup software, just mount, power, and align using the built in alignment LEDs, and you are connected.

Highlights

+ Easy

- Mount units to a pole or wall using included mount kit
- Signal strength LED's for easy alignment
- Just power and align using supplied PoE injectors and power supplies
- No technical expertise or configuration needed. Simply mount, power, and align units for instant connectivity.

+ Highly Secure

- Encrypted & Authenticated Wireless Connection (WPA3)
- Every kit has unique SSID and security settings
- Management Frame Protection (MFP) enabled

+ Hardened-Grade for Outdoor & Harsh Environments

- Fanless and ruggedized outdoor IP67 enclosure (Rainproof)
- Wide operating temperature range (-40 to 167°F)
- Connections up to 2 miles away

+ What's Included

- Base unit and 2, 4, or 6 auxiliary units preconfigured to connect upon power-up
- Wall and pole mounting kits
- PoE PowerEZ Active PoE to Passive PoE Converters for Base and Auxiliary Units

Specifications

+ Wireless

- Frequency 5 GHz
- Max data rate 2400 Mbit/s
- Number of chains: 2 per unit
- Standards 802.11a/n/ac/ax
- WPA3 Passphrase
- 256-bit AES-CCM Encryption
- Dynamic Frequency selection

+ Layer 2 Features

- Auto-negotiation for port speed and duplex
- Redundant Protocols (always enabled)
 - IEEE 802.1D STP
 - IEEE 802.1w RSTP
 - IEEE 802.1s MSTP

+ Interface

Ethernet

- Primary Node: 10/100/1000BASE-T Passive PoE
- Auxiliary Node: 10/100/1000BASE-T

Wireless

- 802.11a/n/ac/ax

LED Indicators - Remote Unit



LED Indicators - Remote Unit



+ Technology

Standards

- IEEE 802.3 10BASE-T
- IEEE 802.3u 100BASE-T
- IEEE 802.3ab 1000BASE-T
- IEEE 802.3x full duplex and flow control
- IEEE 802.1D STP
- IEEE 802.1s MSTP
- IEEE 802.1w RSTP
- IEEE 802.11w Management Frame Protection (MFP)

Power

- PoE in (Passive PoE)
- PoE in input Voltage 18-28V
- Max power consumption 15W

+ Physical

Primary Node

Dimensions

- 270 x 565 x 76mm (W x H x D)
- 10.63" x 22.25" x 3"

Weight (shipping)

- 6.2lbs (2.81kg)

Installation Type

- Pole/Wall

Casing Material

- UV Protected Polystyrene case

Auxiliary Node

Dimensions

- 185 x 185 x 63.5mm (W x H x D)
- 7.28" x 7.28" x 2.5"

Weight (shipping)

- 2 units per box: 7.15lbs (3.25kg)

Installation Type

- Pole/Wall

Casing Material

- UV Protected Polystyrene case

+ Environmental

Operating Temp.

-40 to 75°C (-40 to 167°F)

Storage Temp.

-45 to 85°C (-49 to 185°F)

Relative Humidity

5% to 95% (non-condensing)

Wind Survivability

200km/h

+ Regulatory

ISO

Manufactured in ISO-9001 facility

EMI

FCC Part 15B Class A

PCC Part 15C

+ Environmental Test Compliance

IEC 60068-2-6 Fc (Vibration Resistance)

EN 61000-4-3 (Radiated RFI)

+ Warranty

Length

3 years

Details

<https://etherwan.com/support/warranty-policy>

Antenna

+ Auxiliary Node Performance

VSWR

< 2.0@ 5-5.9GHz

Dual polarized

Horizontal & Vertical

High gain

Up to 13dBi

Front to Back Ratio

>20dB

Port isolation

>30dB

+ Auxiliary Node Electrical Specification

Frequency Range

5-5.9 GHz

Gain

13dBi typ.

Polarization

Dual linear-V & H

Beamwidth Horizontal

37 deg@ -3dB

Beamwidth Vertical

37 deg @ -3dB

VSWR

<2.0 typ.

Impedance

50 Ohm

RF Interface

2 x SMA Female

Front-to-Back Ratio

>20dB

Port-to-Port Isolation

>30dB

+ Primary Node Specifications

VSWR

2.5: 1 Max. <2

Polarization

Linear & Vertical

Vertical & Horizontal

Gain

8 dBi Vertical

7 dBi Horizontal

Frequency range

5150 - 5875 MHz

4.9 - 5.9 GHz Vertical

5 - 5.9 GHz Horizontal

Beam width

Horizontal 360°

Vertical 18°

Impedance

50 Ω

+ Primary Node Environmental & Mechanical Characteristics

Temperature

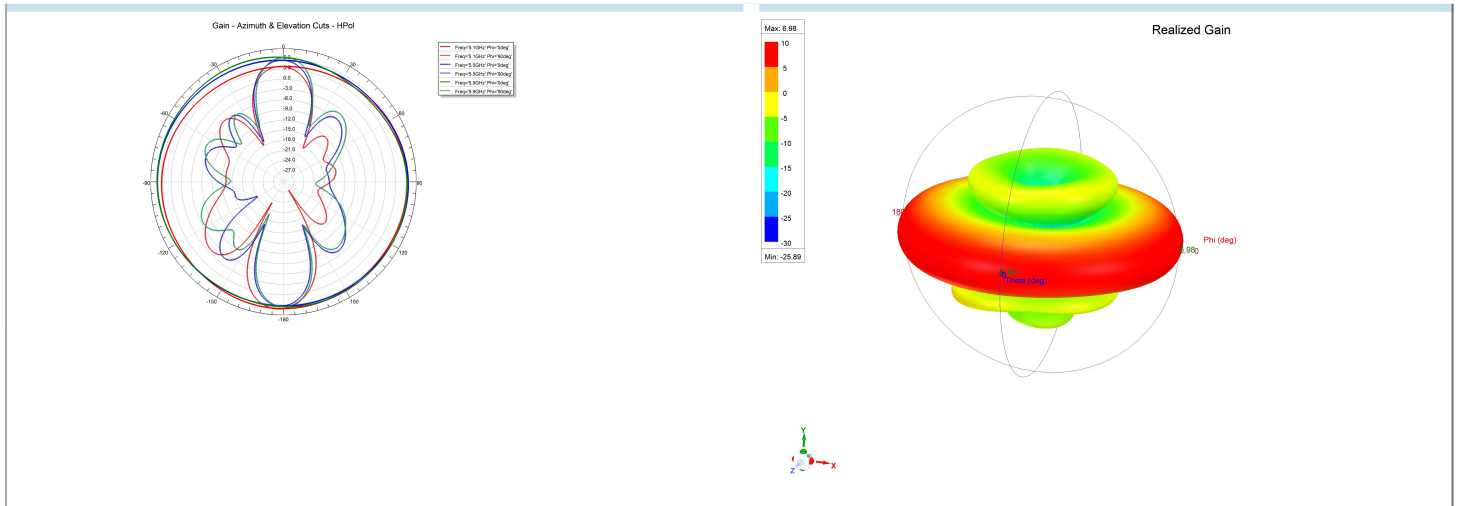
-40°C to +85°C

Humidity

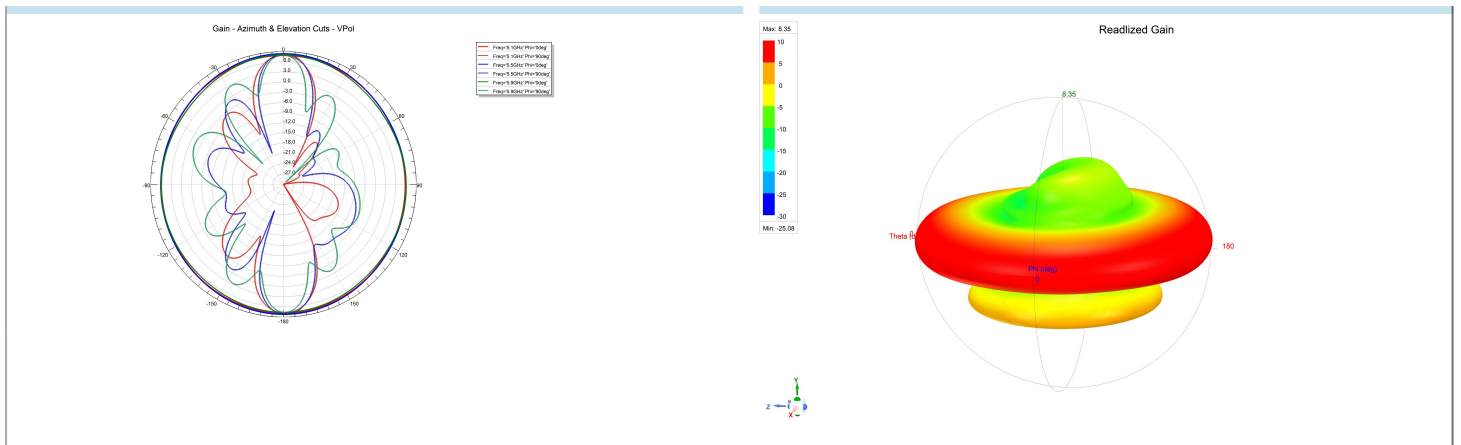
90% @ 25°C

+ Primary Node Omni-directional Antenna

Azimuth & Elevation - Horizontal

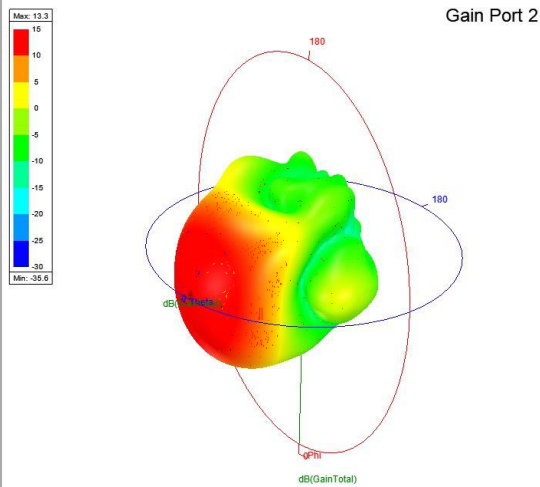


Azimuth & Elevation - Vertical

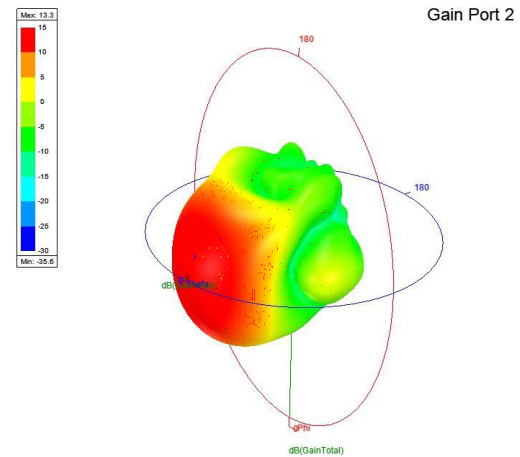


+ Auxiliary Node Panel Antenna

+ 3D Gain - Port 1



+ 3D Gain - Port 2



Ordering Info

+ Model

EasyLink-PRO-US-MP-02	2 paired Wireless Bridge Clients and 1 Wireless Bridge Base unit, 3 x 24VDC, 1.5A Power Supplies, 3 x Passive PoE Injectors, 3 x PoE PowerEZ and 3 x Mounting kits.
EasyLink-PRO-US-MP-04	4 paired Wireless Bridge Clients and 1 Wireless Bridge Base unit, 5 x 24VDC, 1.5A Power Supplies, 5 x Passive PoE Injectors, 5 x PoE PowerEZ and 5 x Mounting kits.
EasyLink-PRO-US-MP-06	6 paired Wireless Bridge Clients and 1 Wireless Bridge Base unit, 7 x 24VDC, 1.5A Power Supplies, 7 x Passive PoE Injectors, 7 x PoE PowerEZ and 7 x Mounting kits.

+ Accessories

J Pole18	18" Wall Mount J-Pole
Cable 3	3' Shielded Twisted Pair CAT 6 Cable with UV Resistant Coating
Cable 25	25' Shielded Twisted Pair CAT 6 Cable with UV Resistant Coating
Cable 50	50' Shielded Twisted Pair CAT 6 Cable with UV Resistant Coating
Cable 150	150' Shielded Twisted Pair CAT 6 Cable with UV Resistant Coating
Cable 300	330' Shielded Twisted Pair CAT 6 Cable with UV Resistant Coating
EPOW-24-60-A	Hardened Power Supply rated for use in temperatures -40 to 167°F



© EtherWAN Systems, Inc. All rights reserved. 20250307

EtherWAN is constantly developing and improving products. Specifications are subject to change without notice and without incurring any obligation.