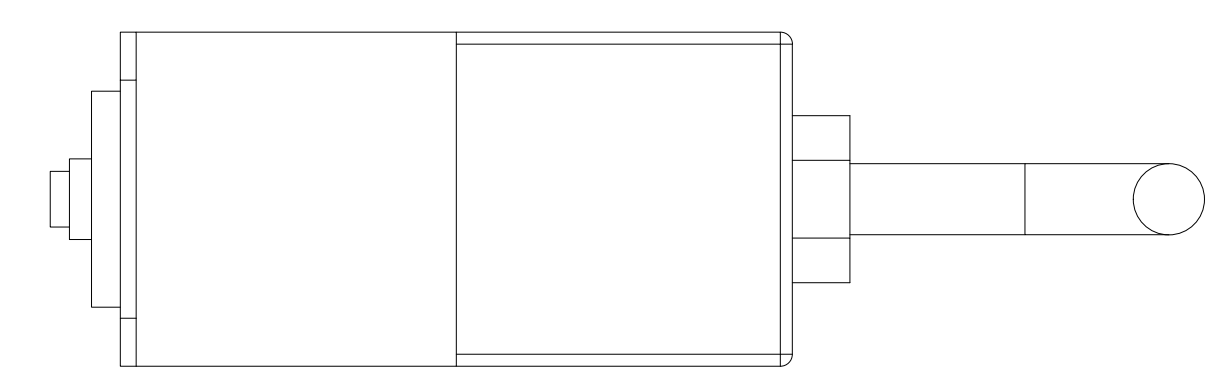
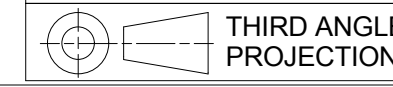


PART NUMBER: 7219
MADE IN THE USA: NO
MOUNTING: H/V
AC RATING VOLTS: 120
AC RATING AMPS: 15 AMP DE-RATED 12 AMP UL
AC RETING WATTS: 1440
AC RATING FREQUENCY-Hz: 50/60 Hz
CIRCUIT BREAKER: 15A
POWER LED: GREEN
ON/OFF SWITCH: NO
OVER CURRENT PROTECTION: CB
POWER CABLE AWG: 14/3 SJT
POWER CABLE LENGTH: 15'
PLUG TYPE: NEMA 5-15P
RECEPTACLE TYPE: NEMA 5-15R
RECEPTACLE STYLE: EVENLY SPACED
RECEPTACLE QUANTITY: 6
MAX OUTPUT PER POWERSTRIP: 12 AMP
JOULE RATING: N/A
UL RATING: 60950-1
CLAMPING LEVEL: N/A
RESPONSE TIME: N/A
MAX SURGE CURRENT: N/A
EMI/RFI NOISE REDUCTION: N/A
SURGE INDICATOR RED LED: N/A
CONNECTED EQUIPMENT WARRANTY: N/A
PRODUCT WARRANTY-GLCC: YES
CERTIFICATION/AGENCY APPROVALS: UL, CUL
UNIT WEIGHT LBS.: 4.2



Product type, specification, price and availability are subject to change without prior notice.

EST. WEIGHT :
N/A



INTERPRET DRAWING PER ASME Y14.5M-1994
 DIMENSIONAL LIMITS APPLY
 AFTER APPLICATION OF FINISH
 DRAWING NOT TO SCALE
 TOLERANCE UNLESS OTHERWISE NOTED:
 ANGULAR +/- 1'
 .XXXX +/- .010
 .XXX +/- .015
 .XX +/- .030
 .X FOR REF. ONLY
 UNLESS OTHERWISE SPECIFIED
 ALL DIMENSIONS ARE IN INCHES

NOTICE:
 Use of this document is subject to a confidentiality and nondisclosure agreement with Great Lakes Case & Cabinet Co., Inc. (GLCC) and may not be reproduced, disclosed or utilized in whole or in part without prior written authorization from GLCC.

PART NUMBER: 7219
 QTY PER UNIT: 1
 MATERIAL TYPE:
 MATERIAL GAUGE:
 FINISH:
 DRAWN DATE: 10/27/2004
 SCH DATE:
 CHECKED & APP. DATE:

TITLE 19" EIA, (6) NEMA-5-15R RECEPT., FRONT OUTLET STRIP, NEMA 5-15P PLUG, 15' CORD, 125V, 15 AMP., 1-RU.
GREAT LAKES CASE & CABINET CO., INC.
 P.O. BOX 551 EDINBORO, PA 16412
 PHONE (814) 734-7303 FAX (814) 734-3907
 E-MAIL glcc@greatcabinets.com
 DWG NO: REV: SHEET: 1 OF 1