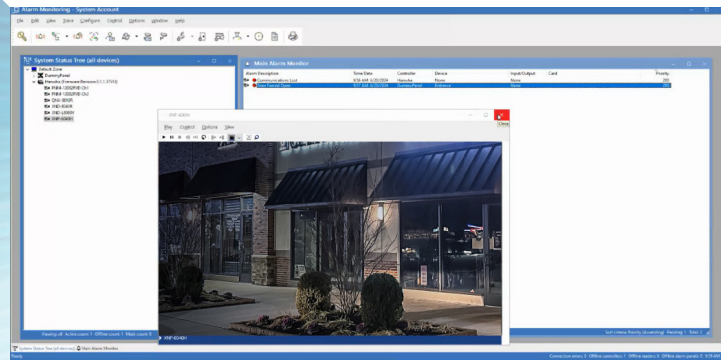




LenelS2 OnGuard Integration Plugin for **Wisenet WAVE VMS** Installation and Setup Guide



LenelS2 OnGuard Integration Plugin for **Wisenet WAVE VMS**

Installation and Setup Guide

Plugin Overview

The Hanwha OpenVideo integration consists of a COM component or “Translator” that is dynamically loaded by the OnGuard applications to realize live/recorded video and server events (Online/Offline/Disk Space) in OnGuard. The Translator utilizes the LenelS2 OnGuard OpenVideo - Recorder interface and the Hanwha video SDK to integrate the two systems.

Specifications and Requirements

LenelS2 OnGuard

- Version 8.2 (8.2.524.126)
- OAAP/LDVR Camera Channels licenses (DV-CH-xxx)

Wisenet WAVE VMS

- Version 5.1.4

Table of Contents

Section 1: Preparing Wisenet WAVE VMS for integration into OnGuard	2
Section 2: Plugin Licensing	6
Section 3: Installing the OnGuard Integration Plugin for Wisenet WAVE	7
Section 4: Installing the OnGuard Accessory Add-on for Wisenet WAVE	9
Section 5: Adding your Wisenet WAVE system to OnGuard	11
Section 6: WAVE Video functionality in OnGuard	15
Section 7: Hanwha Translator Configuration file	16

Section 1: Preparing Wisenet WAVE VMS for integration into OnGuard

In order for OnGuard to properly access the cameras registered to your Wisenet WAVE system, the creation of a new user and user role is recommended. This will allow you to assign the appropriate privileges and choose which cameras within your Wisenet WAVE system will be used with your OnGuard integration.

Creating a New User for your OnGuard Integration

- 1 Create a new user in Wisenet WAVE through your Wisenet WAVE client. (In this example, we created a user called "onguard".)
- 2 For Role, select "Custom" then "Edit Roles".

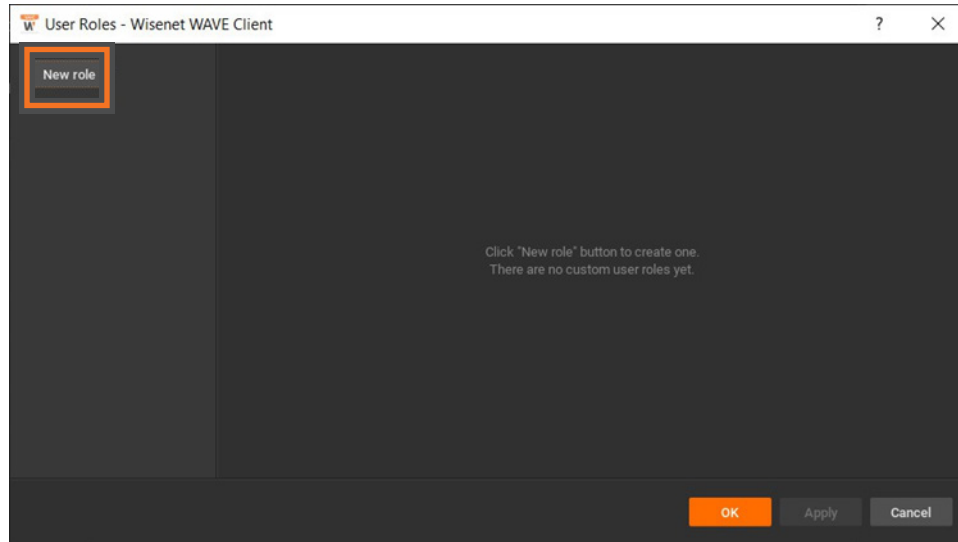
The screenshot shows a 'New User...' dialog box from the Wisenet WAVE Client. The dialog is titled 'New User... - Wisenet WAVE Client' and has a 'User Information' section. The fields are as follows:

- Login:** onguard
- Name:** (empty)
- Email:** (empty)
- Password:** (masked with dots, status: GOOD)
- Confirm Password:** (masked with dots)
- Role:** Live Viewer (dropdown menu), with an 'Edit Roles...' button.

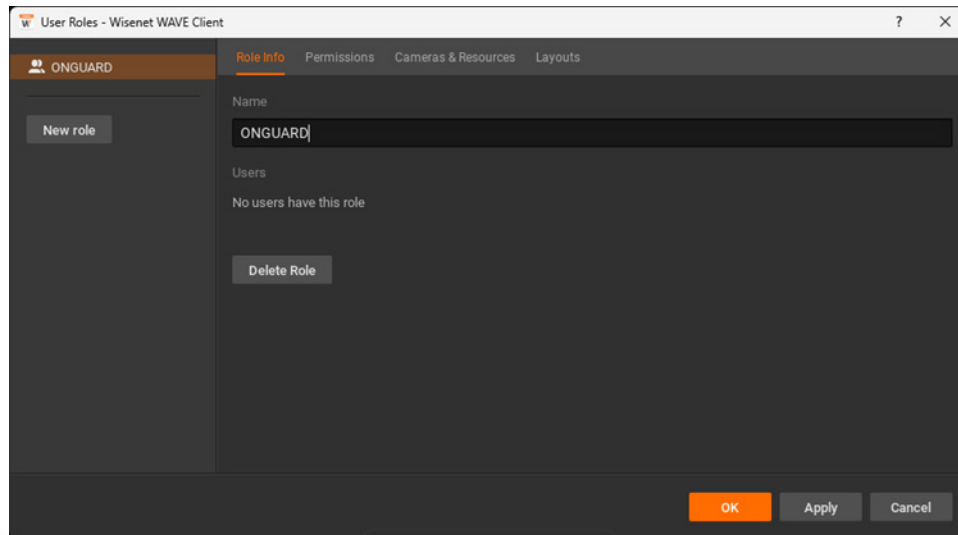
Below the role selection, there is a description: 'Can view live video from all cameras.'

At the bottom of the dialog, there is an 'Enabled' toggle switch (checked), a vertical ellipsis menu, an orange 'OK' button, and a grey 'Cancel' button.

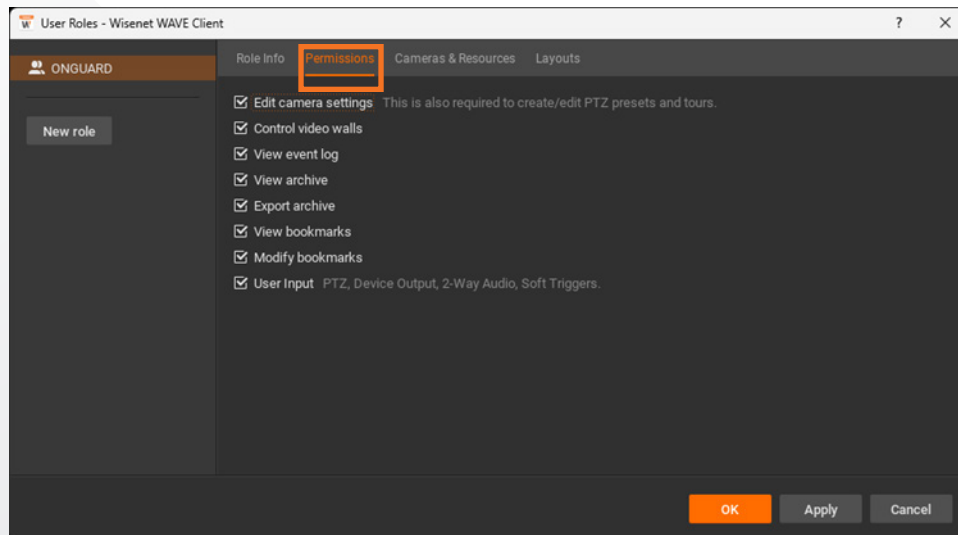
- 3 Click on "New role".



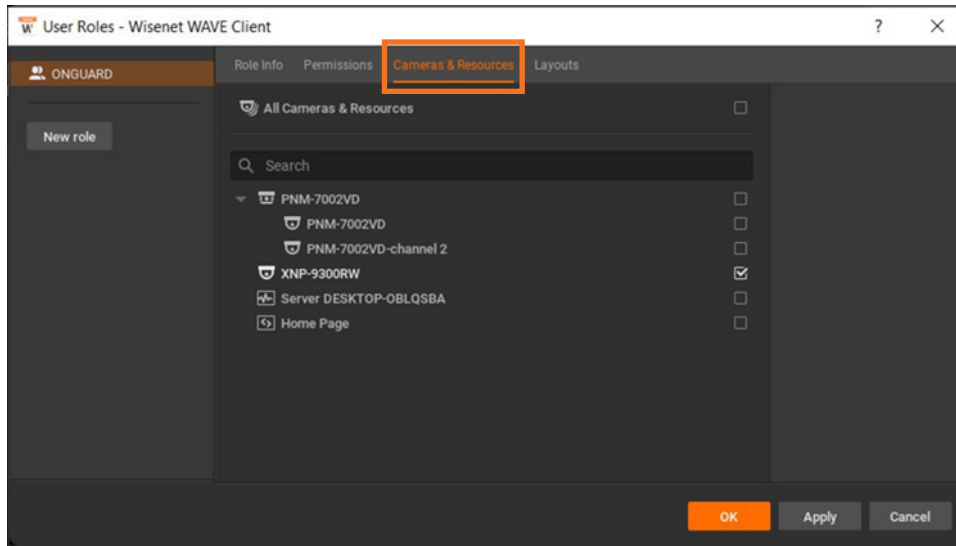
- 4 Give the new role a name. (In this example we named it "ONGUARD".)



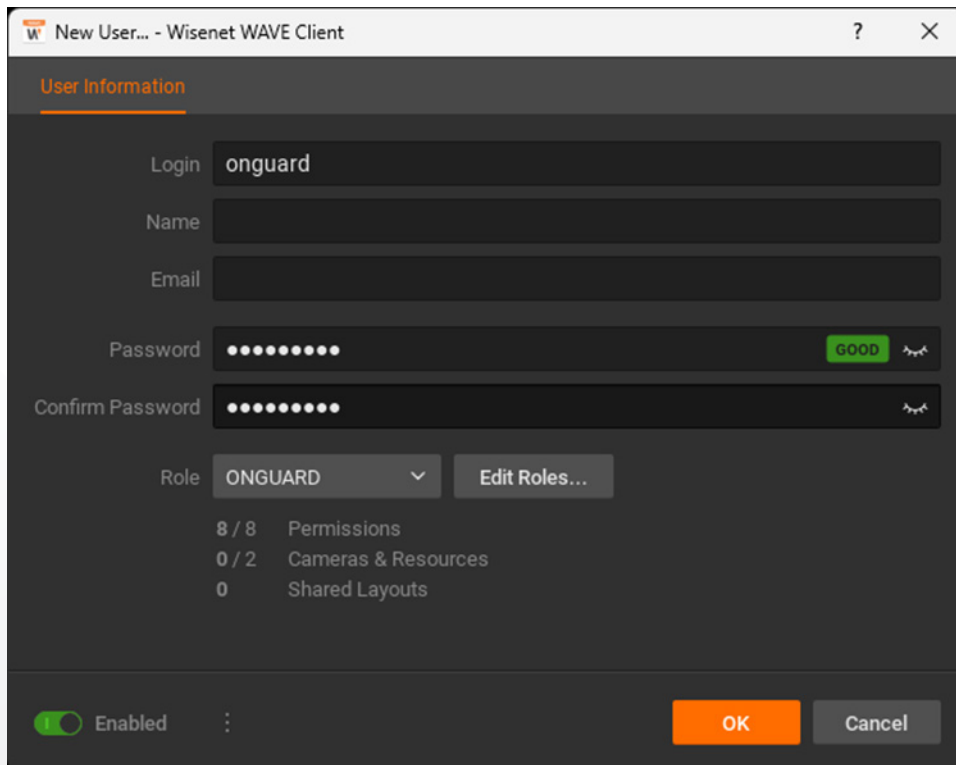
- 5 Under the "Permissions" tab, enable all available check boxes.



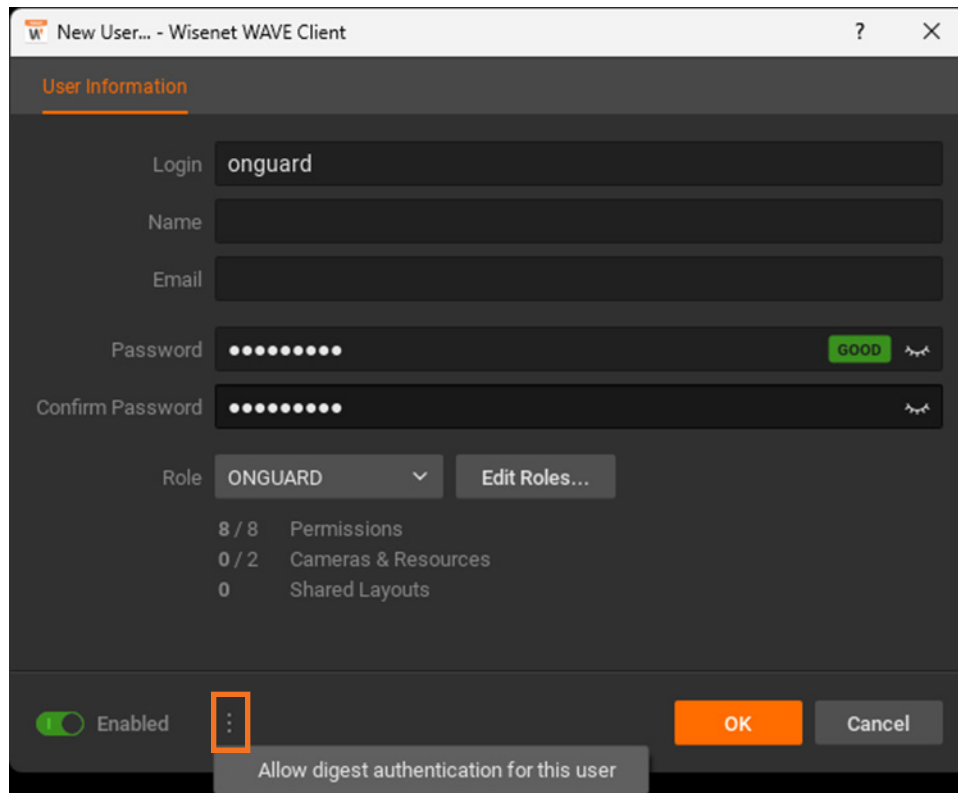
- Under the "Cameras & Resources" tab, select the cameras that you would like to integrate into OnGuard.



- Click "OK" to save the new Role and exit the setup window, returning you to the "New User" window.
- Select the role you have just created as your user role.



- 9 Click on the popup menu (denoted by three dots) in the lower left corner of the window and select "Allow digest authentication for this user". (This is needed in order to properly view video in OnGuard.)



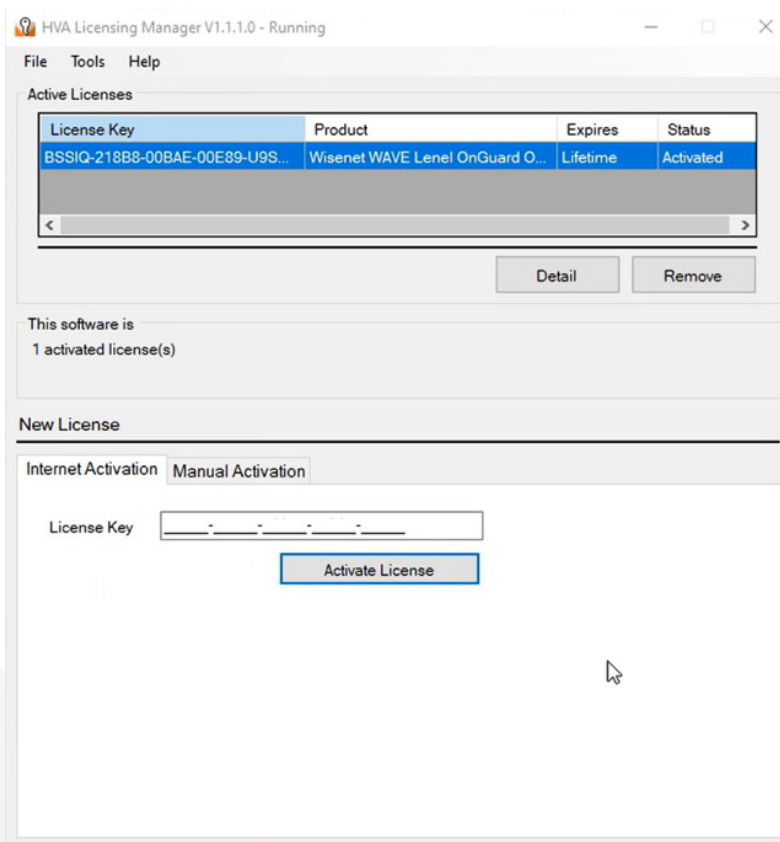
- 10 If prompted, reenter the password for this user and click "OK" when done.

Section 2: Plugin Licensing

Activating the Wisenet WAVE OnGuard Video Integration License

This license validation is handled through the HVA License Manager service running on your OnGuard Server or on a different server within the network. In order to use the OnGuard Integration Plugin for Wisenet WAVE VMS, please ensure that your user license has been validated for use with the target system.

- 1 Order the Wisenet WAVE OnGuard Video Integration license (WAVE-VIDLENELOG-INT) through the distributor.
- 2 Receive the License Key via e-mail
- 3 Download the Hanwha Vision America License Manager found in the Products (Software Integrations) tab at <https://hanwhavisionamerica.com/>
- 4 Install the HVA License Manager
- 5 Input the License Key to activate license



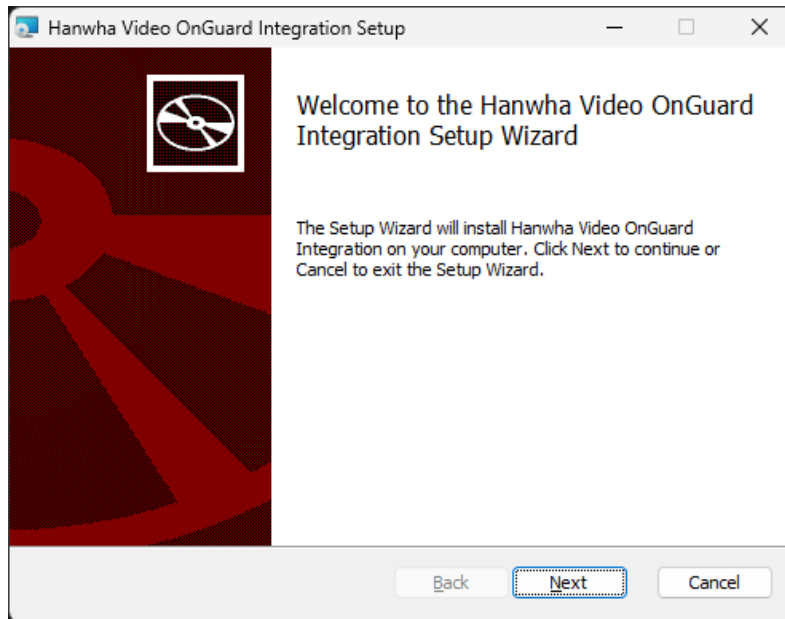
For more information regarding the installation and use of the HVA License Manager, please refer to the HVA License Manager user manual, found at hanwhavisionamerica.com/

Section 3: Installing the OnGuard Integration Plugin for Wisenet WAVE

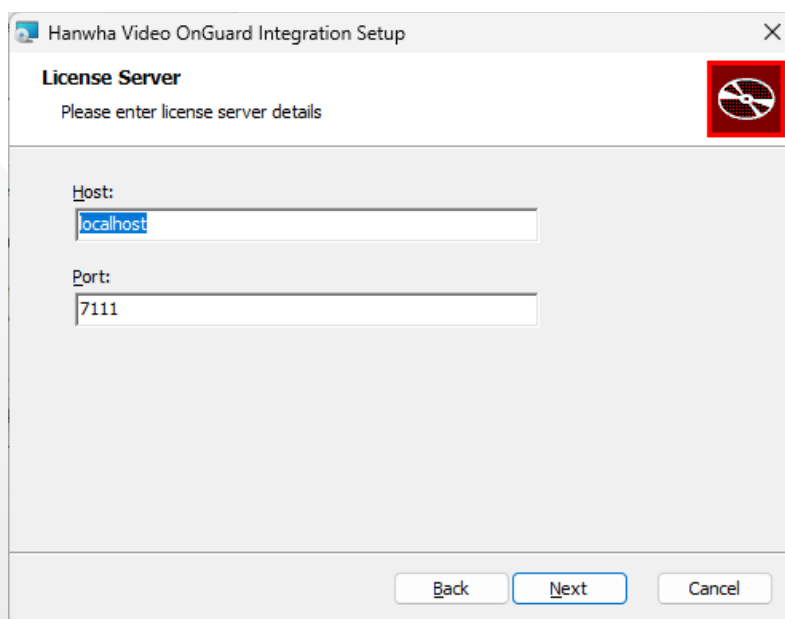
The installation file is located in the 'prerequisites' folder of LenelS2's '8.2_Accessory_Add-On_for_Hanwha WAVE_1.0.2'

****NOTE: The '8.2_Accessory_Add-On_for_Hanwha WAVE_1.0.2' package is provided by LenelS2**

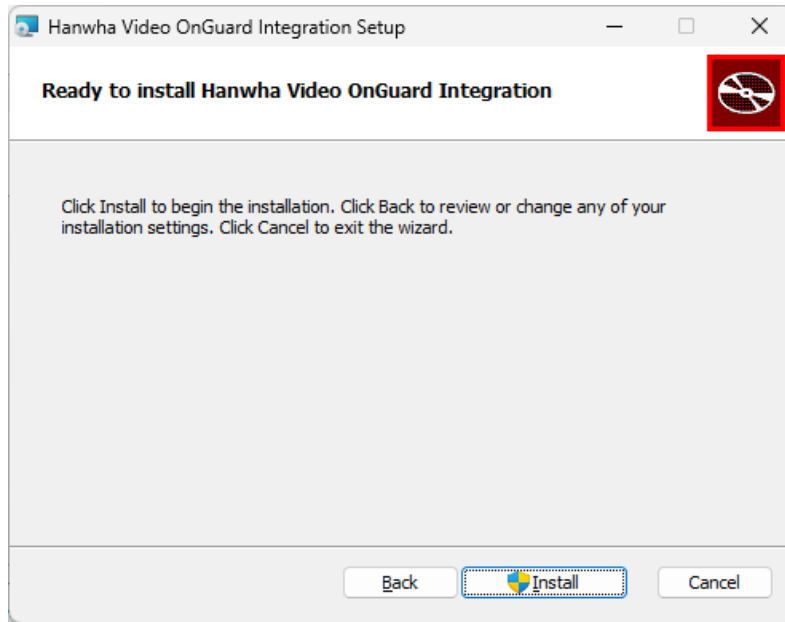
- 1 Run the HanwhaOnGuardInstaller.msi and click "Next"



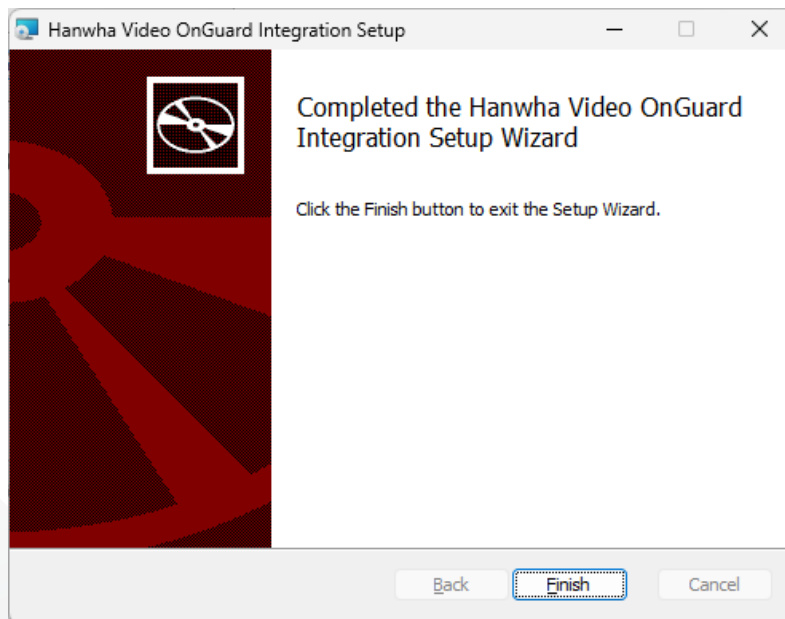
- 2 Enter the Host and Port for the HVA License Server. Then click "Next".



- 3 Click "Install" to begin installation.



- 4 Click "Finish" to exit the Wizard.

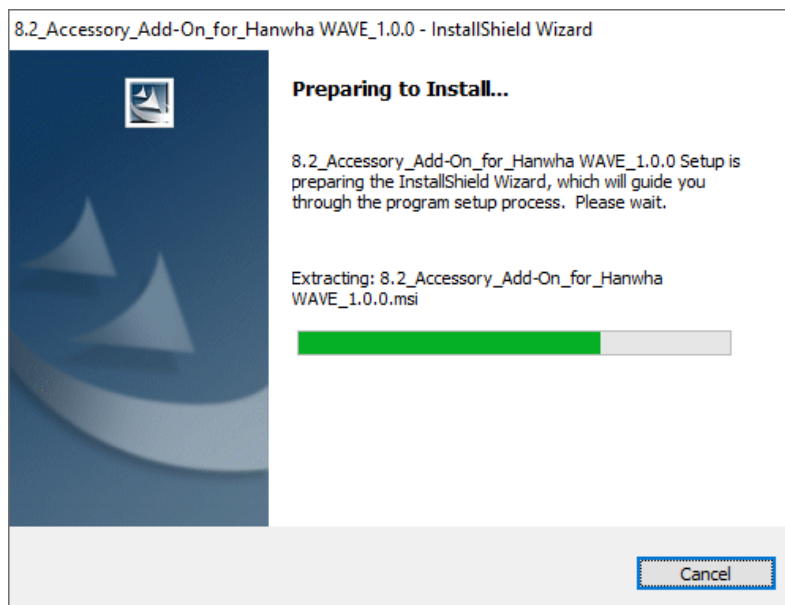


Section 4: Installing the OnGuard Accessory Add-on for Wisenet WAVE

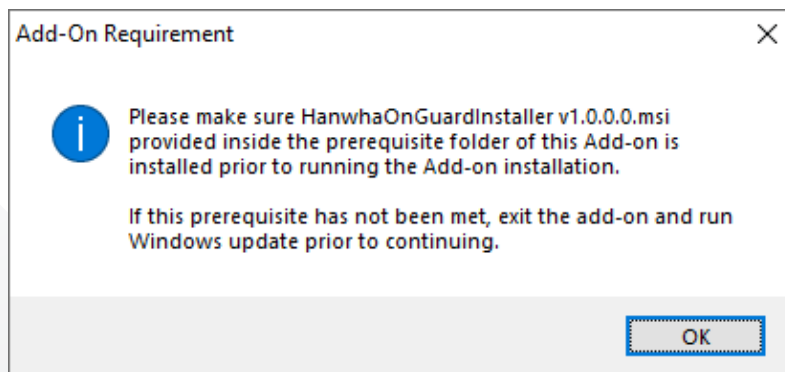
The installation file is located in LenelS2's '8.2_Accessory_Add-on_for_Hanwha WAVE_1.0.2'

****NOTE: The '8.2_Accessory_Add-On_for_Hanwha WAVE_1.0.2' package is provided by LenelS2**

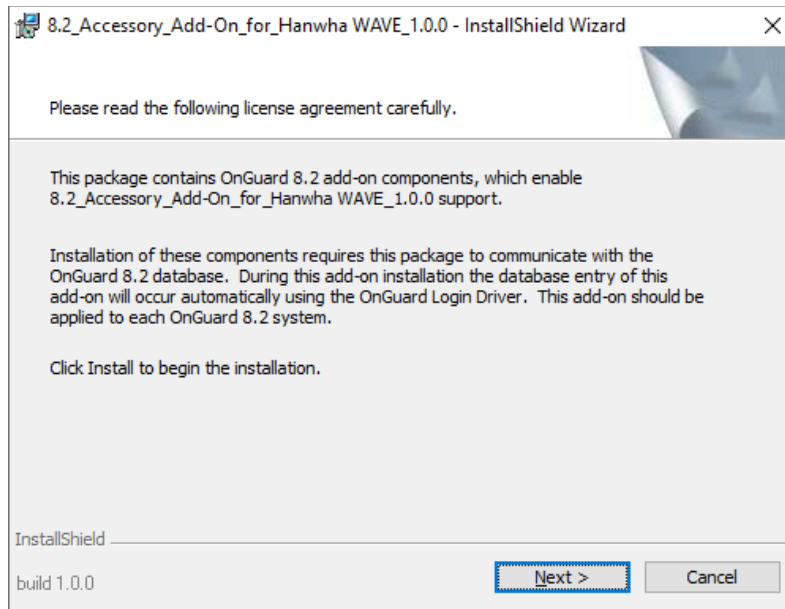
- 1 Run the Setup.exe file



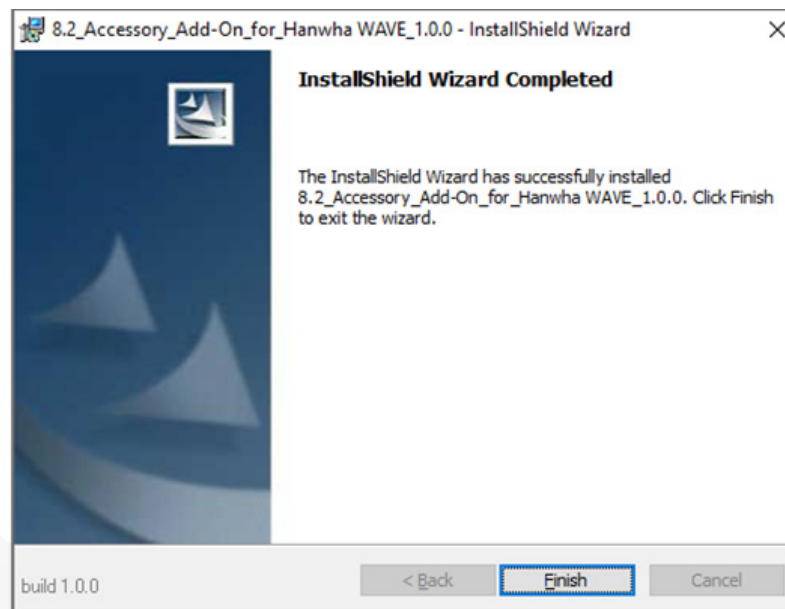
- 2 After confirming that HanwhaOnGuardInstaller.msi was installed, press "OK"



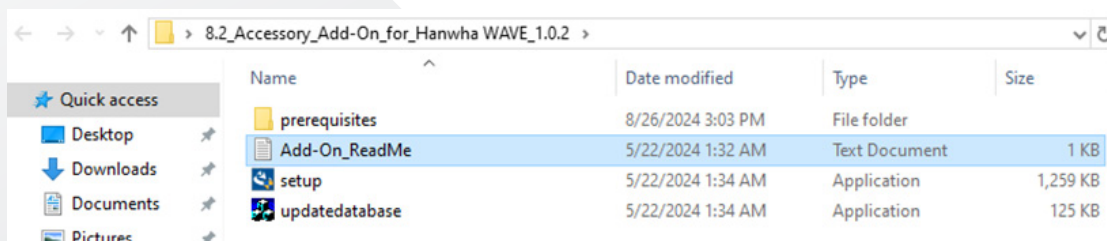
- 3 Click "Next" to begin the installation.



- 4 Click "Finish" to exit the Wizard.

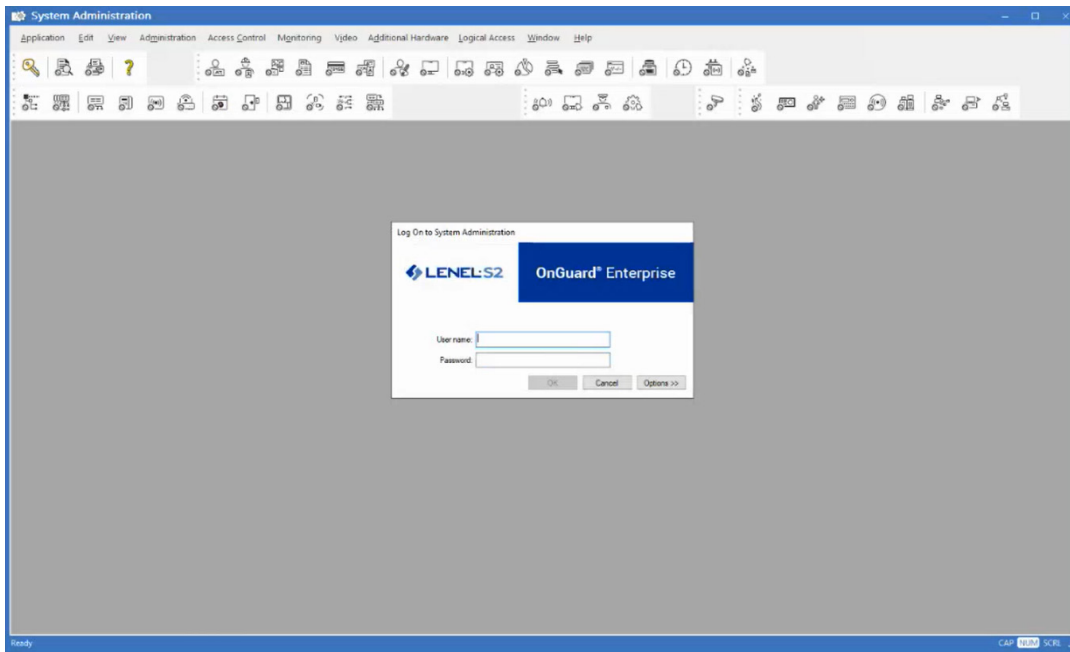


- 5 Refer to the Add-on_ReadMe file for LenelS2 OnGuard's Accessory Add-on instructions.

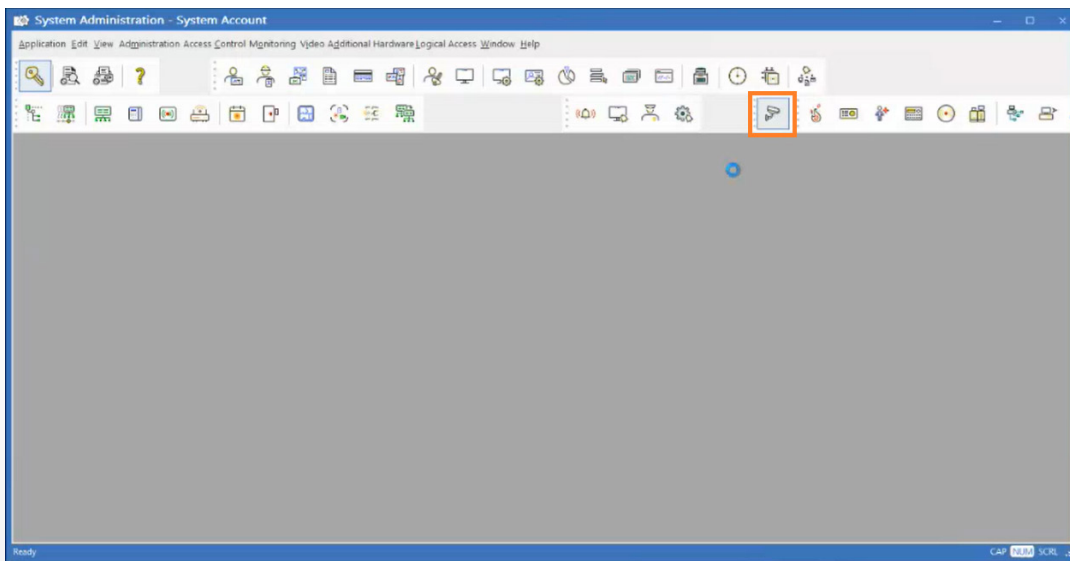


Section 5: Adding your Wisenet WAVE system to OnGuard

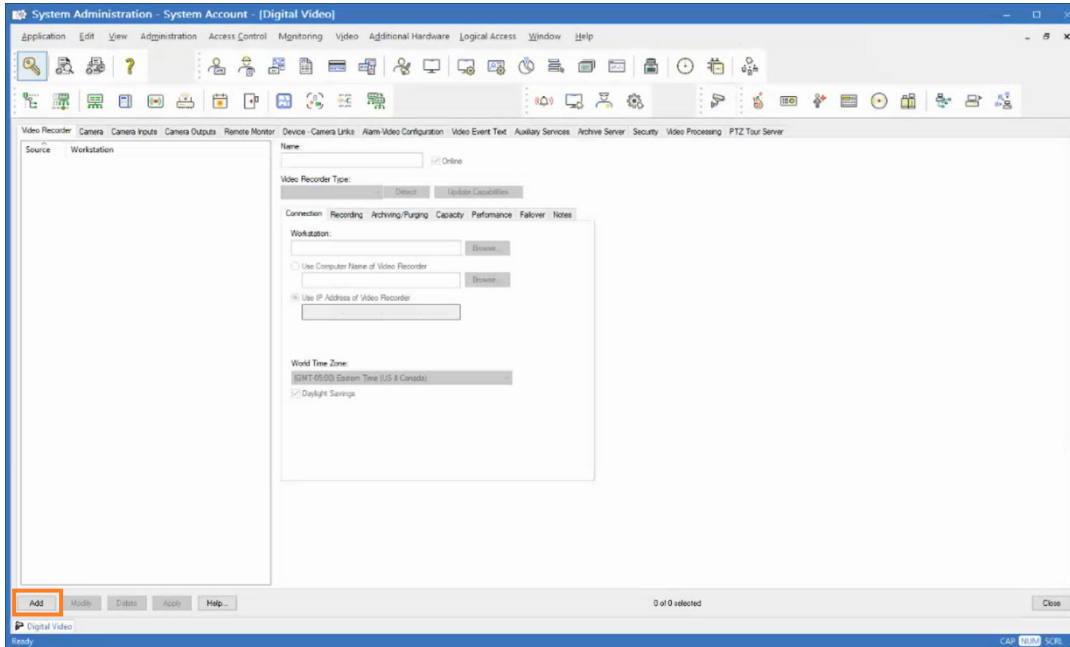
- 1 Log into OnGuard's System Administration



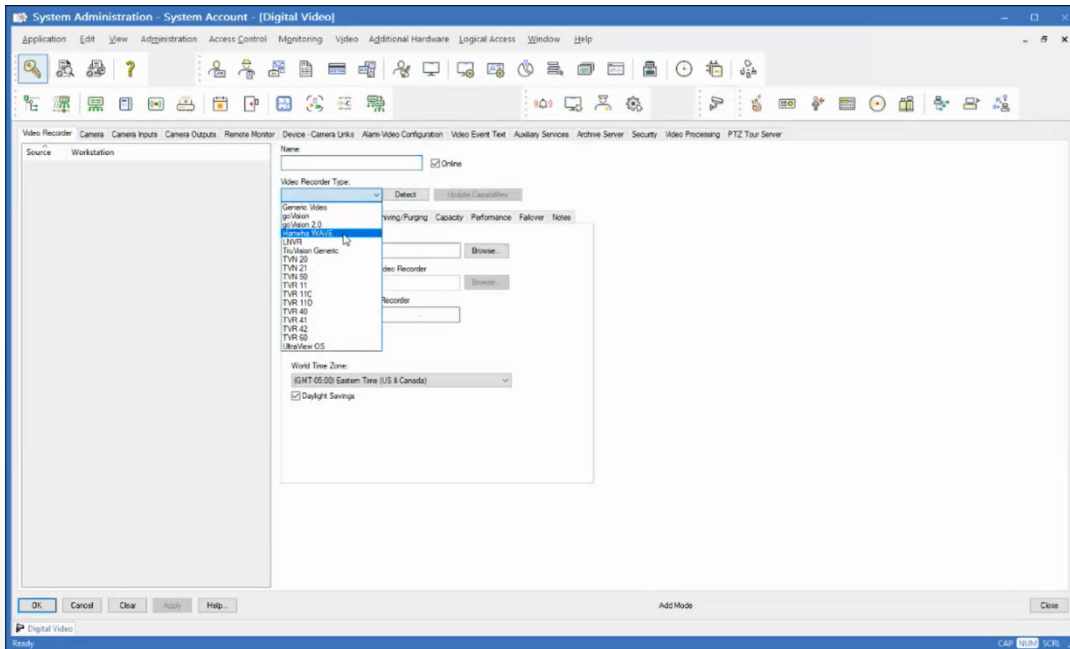
- 2 Click on the icon for "Digital Video"



3 Click on "Add" to add a new Video Recorder

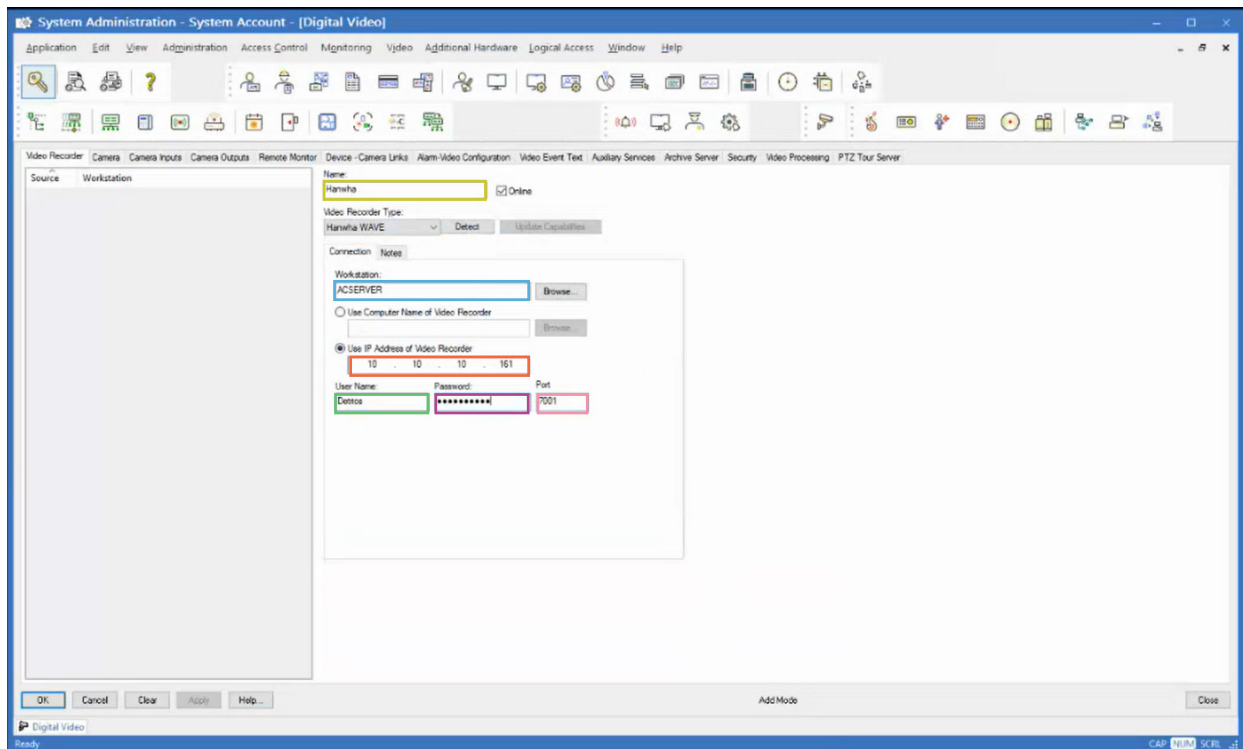


4 Click "Hanwha WAVE" as the Video Recorder Type

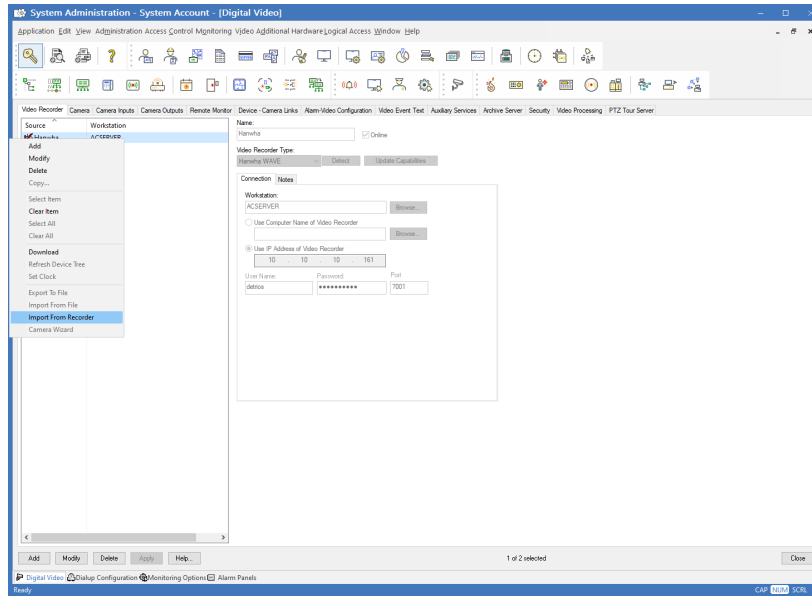


5 Complete the fields appropriate to your Wisenet WAVE VMS server and click "OK"

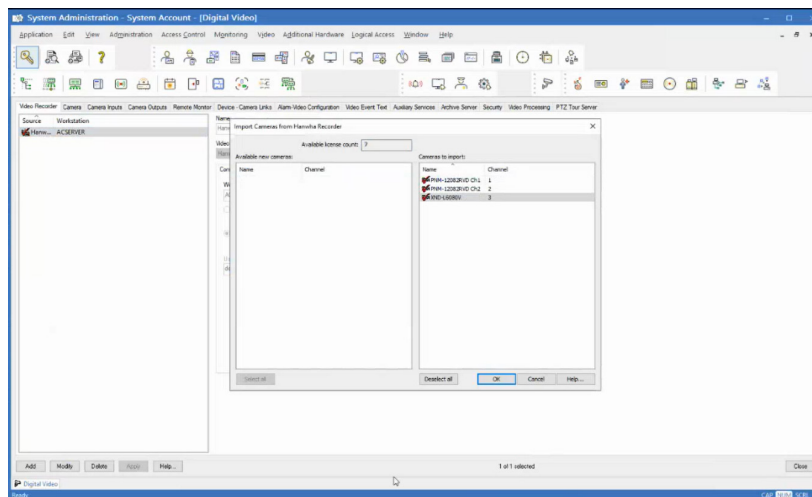
- a **Name:** Provide a name for the Wisenet WAVE server being added
- b **Workstation:** Browse for the OnGuard server in your network
- c **IP Address of Video Recorder:** Provide the IP address of the Wisenet WAVE server being added
- d **Username:** Input the user previously created in Section 1
- e **Password:** Provide the password for the above Wisenet WAVE user
- f **Port:** Provide port for Wisenet WAVE server (Default is 7001)



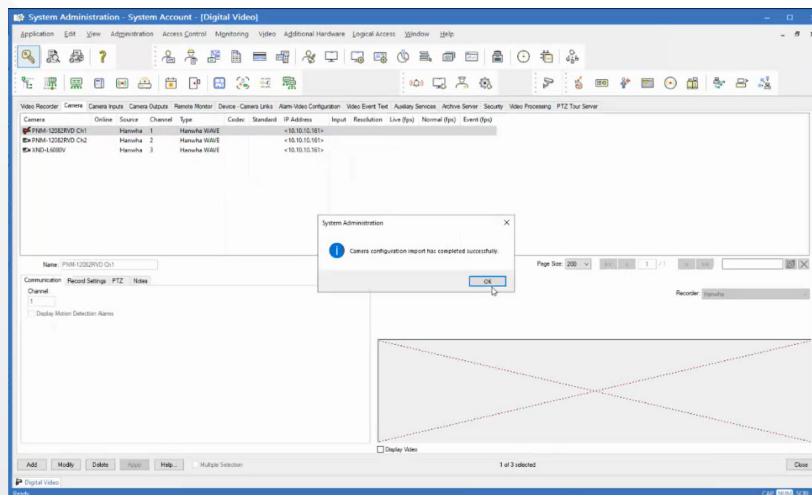
6 Right-click the Hanwha Video Recorder and select "Import from Recorder"



7 Select the cameras to import and click "OK"



8 Click "OK" to complete importing the cameras



Section 6: WAVE Video functionality in OnGuard

The Hanwha OnGuard video integration provides the following functionality:

- Import of Cameras configured in Wisenet WAVE VMS
- PTZ camera control and presets
- View live video
- View recorded video from an alarm
- Create and delete bookmarks (Video event locking)
- Seek within a video timeline
- Pause recorded video
- Resume recorded video
- Step frames of paused video
- Fast forward video x2 & x4 speed
- Export of video clips
- Configuring PTZ Camera Presets and Tours

NOTE: For PTZ control of cameras via OnGuard, please ensure that the WAVE server containing the PTZ camera is added directly in OnGuard

Section 7: Hanwha Translator Configuration file

NOTE: Please refrain from modifying this file unless you are fully aware of its purpose and the implications of any changes.

The configuration file consists of the parameters used for the integration.

The file is found in:

C:\ProgramData\Hanwha\HanwhaTranslatorConfig.json

```
{
  "logLevel": "info",
  "serverCheckInterval": 60,
  "cameraCheckInterval": 60,
  "diskCheckInterval": 600,
  "diskAlarmThreshold": 95,
  "licenseCheckInterval": 60,
  "licenseServerHost": "localhost",
  "licenseServerPort": 7111
}
```

The settings are:

LogLevel: Defines the verbosity level of logging, valid values are: "trace", "debug", "info", "warn". In production this should be set to "warn"

serverCheckInterval: The interval in seconds that server connectivity is checked. This controls the latency of any device online/offline event appearing in OnGuard. In production this should be set to 60.

cameraCheckInterval: The interval in seconds that the camera is checked for being online and connected to the Hanwha server. This controls the latency of any device online/offline event appearing in OnGuard. In production this should be set to 60.

diskCheckInterval: The interval in seconds that the Hanwha video server is checked for total disk capacity used. This controls the latency of the disk threshold event appearing in OnGuard. In production this should be set to 600.

diskAlarmThreshold: The percentage threshold used to set/clear the disk threshold event.

licenseCheckInterval: The interval in seconds that the Hanwha license is checked for validity. In production this should be set to 60.

licenseServerHost: The host or IP address of the HVA License Manager. This defaults to localhost, and can be changed if the license manager resides elsewhere.

licenseServerPort: The port used by the HVA license Manager, defaults to 7111.

For more information visit us at
HanwhaVisionAmerica.com



Hanwha Vision America
500 Frank W. Burr Blvd. Suite 43 Teaneck, NJ 07666
Toll Free : +1.877.213.1222
Direct : +1.201.325.6920
Fax : +1.201.373.0124
www.HanwhaVisionAmerica.com

© 2024 Hanwha Vision Co., Ltd. All rights reserved.

DESIGN AND SPECIFICATIONS ARE SUBJECT TO CHANGE WITHOUT NOTICE

Under no circumstances, this document shall be reproduced, distributed or changed, partially or wholly, without formal authorization of Hanwha Vision Co., Ltd.

* Wisenet is the proprietary brand of Hanwha Vision, formerly known as Hanwha Techwin.