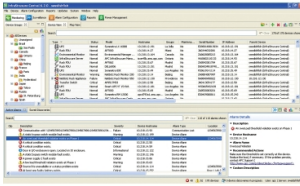


# Product data sheet

Specifications



## License, EcoStruxure IT Data Center Expert, paper, perpetual, 100 nodes

AP95100

### Overview

**Lead time** Usually in Stock

### Main

**Range of Product** EcoStruxure IT Data Center Expert

**Product or Component Type** License

**Format** Paper

**Software Type** DCIM software

**Type of License** Perpetual

**Number of nodes** 100

**Service benefits**  
Enhanced technical assistance  
Firmware and software update  
Minimised risk of failure  
New features  
Software update  
Technical support

**User Language** English

### Complementary

**Type of Installation** Self installable

**Software Designation** EcoStruxure IT Data Center Expert software  
DCIM software

**Software Function** Remote monitoring  
Management

**Range Compatibility** EcoStruxure IT Data Center Expert

**Hosting option** On-premise

### Ordering and shipping details

**GTIN** 731304253518

### Packing Units

**Unit Type of Package 1** PCE

**Number of Units in Package 1** 1

**Package 1 Height** 9.02 in (22.9 cm)

**Package 1 Width** 0.24 in (0.6 cm)

**Package 1 Length** 12.01 in (30.5 cm)

**Package 1 Weight** 0.99 lb(US) (0.45 kg)

Price is "List Price" and may be subject to a trade discount – check with your local distributor or retailer for actual price.



## Environmental Data

Schneider Electric aims to achieve Net Zero status by 2050 through supply chain partnerships, lower impact materials, and circularity via our ongoing “Use Better, Use Longer, Use Again” campaign to extend product lifetimes and recyclability.

[Environmental Data explained >](#)

[How we assess product sustainability >](#)

### Environmental footprint

Carbon footprint (kg CO2 eq, Total Life cycle)	1
--	---

### Use Better

#### Materials and Substances

Packaging made with recycled cardboard	No
--	----

Packaging without single use plastic	No
--------------------------------------	----

<a href="#">EU RoHS Directive</a>	Compliant
-----------------------------------	-----------

REACH Regulation	<a href="#">REACH Declaration</a>
------------------	-----------------------------------

Halogen content performance	Product contains halogen above thresholds
-----------------------------	---

### Use Again

#### Repack and remanufacture

Circularity Profile	<a href="#">End of Life Information</a>
---------------------	---

Take-back	Yes
-----------	-----

WEEE	 The product must be disposed on European Union markets following specific waste collection and never end up in rubbish bins.
------	--

Image of product / Alternate images

Alternative

This screenshot shows a software interface with a tree view on the left and a table on the right. The table lists various components and their configurations. The columns include: Name, Quantity, Brand, Model, and Description. The tree view on the left shows a hierarchical structure of components, including 'AP95100' and its sub-components.

This screenshot shows a more detailed software interface with a tree view on the left and a table on the right. The table lists various components and their configurations. The columns include: Name, Quantity, Brand, Model, and Description. The tree view on the left shows a hierarchical structure of components, including 'AP95100' and its sub-components.

