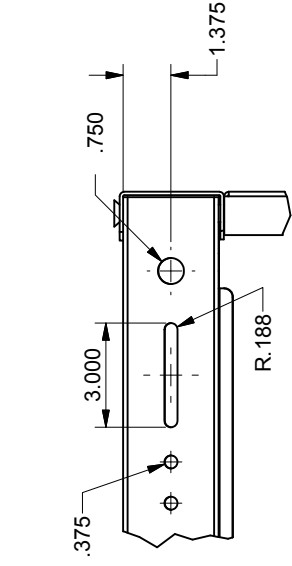
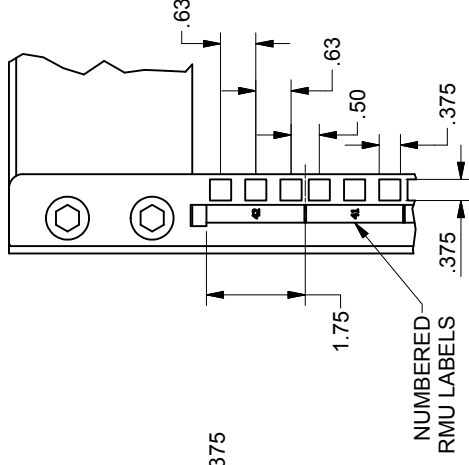


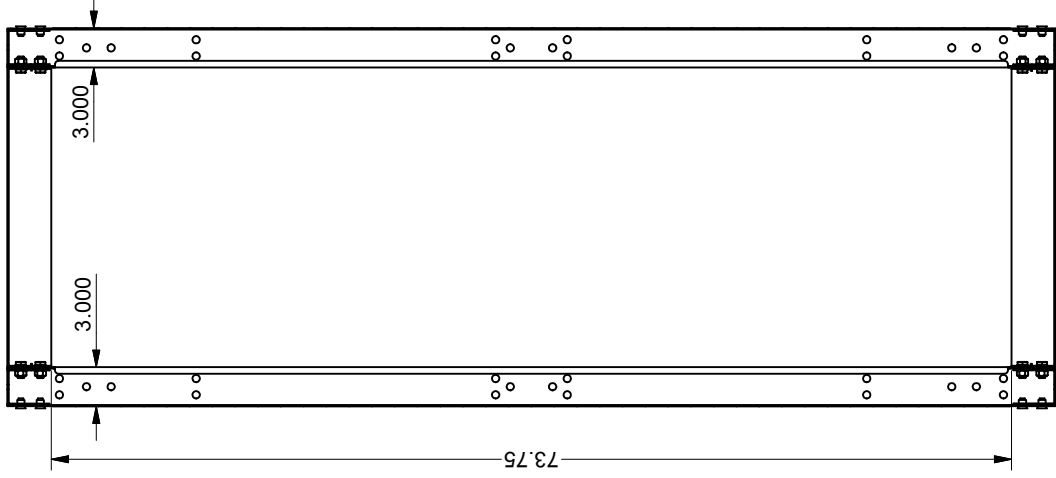
.563, NETWORK AND CABLE  
MANAGEMENT ACCESSORIES  
HOLES



DETAIL C



DETAIL A



SECTION B-B



THIRD ANGLE  
PROJECTION

UNLESS OTHERWISE SPECIFIED  
ALL DIMENSIONS ARE IN INCHES

INTERPRET DRAWING PER ASME Y14.5M-1994

DIMENSIONAL LIMITS APPLY  
AFTER APPLICATION OF FINISH

DRAWING NOT TO SCALE

TOLERANCE UNLESS OTHERWISE NOTED:

ANGULAR +/- 1

XXXX +/- .010

XXX +/- .015

XX +/- .030

X FOR REF ONLY

**NOTICE:**

Use of this document is subject to a confidentiality and nondisclosure agreement with Great Lakes Case & Cabinet Co., Inc. (GLCC) and may not be reproduced, disclosed or utilized in whole or in part without prior written authorization from GLCC.

PART NUMBER:

QTY PER UNIT: 1

MATERIAL TYPE:

MATERIAL GAUGE:

FINISH: SEE NOTES

DATE: 1/11/2011

DRAWN: MZ

CHECKED & APP: WSS

TITLE: HEAVY DUTY FOUR POST RACK

GREAT LAKES CASE & CABINET CO., INC.  
P.O. BOX 551 EDINBORO, PA 16412  
PHONE (814) 734-7303 FAX (814) 734-3907  
E-MAIL glcc@greatlakes.com

DWG NO: 1013250

REV: 0

SHEET: 1 OF 1

**SPECIFICATIONS:**

**RACK SPACES :** 19" EIA 310-E COMPLIANT - 42 RMU

**WEIGHT CAPACITY :** 2000 lbs. (BOLTED TO FLOOR)

**COLOR :** DURABLE TEXTURED BLACK POWDER COATING

**CERTIFICATIONS :** UL 60950-1 STANDARD FOR I.T. & COMMUNICATIONS EQUIPMENT.

**CONSTRUCTION :** BOLT TOGETHER FRAME, #12 GA. C.R.S.

**HARDWARE :** PACKAGE OF QTY-50; M6 SCREWS AND CAGE NUTS, INCLUDED.

**GENERAL :** SHIPS FLAT (UNASSEMBLED)  
GANGING WITH 2 POST RACKS POSSIBLE  
(OPTIONAL CASTER KIT AVAILABLE)