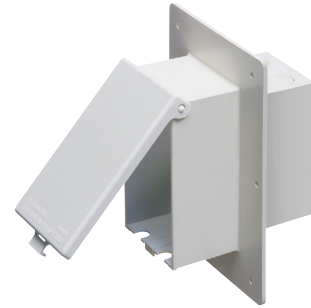


## Low Profile IN BOX® for 1-1/2" Wall Systems

Recessed electrical box with weatherproof-in-use extra-duty cover for 1-1/2" wall systems, including foam. Non-metallic cover and base. Accepts most single gang wiring devices and uses standard indoor wall plates or a GFCI cover plate. Box and white cover are textured/ paintable. UV rated plastic for long outdoor life.

### FEATURES AND BENEFITS

- IN BOX's one-piece assembly replaces the installation of an electrical box and bubble cover assembly
- Fewer parts to handle—save on materials and labor
- Installs in the wall, so less of it shows outside
- Features a fixed, built-in flange, large enough to eliminate the need for a separate flashing
- Install option: Cover is removable for easier device installation
- No gaskets required



DBVME1W

CATALOG NUMBER	UPC/DCI/NAED MFG #018997	ORIENTATION/COVER COLOR	UNIT PKG	STD PKG	DIM A	DIM B	DIM C	DIM D	DIM E
DBVME1C	77645	Vertical/Clear	1	4	8.000	5.750	5.160	2.461	2.567
DBVME1W	77646	Vertical/White	1	4	8.000	5.750	5.160	2.461	2.567

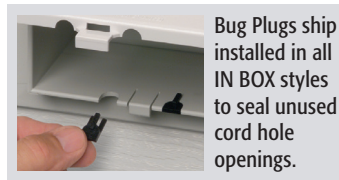
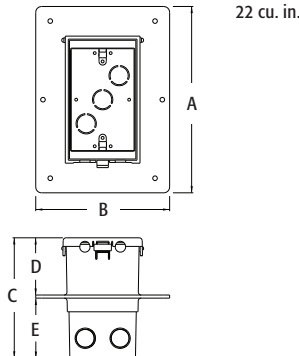


Note: Meets 2015 CEC (Rule 26-702), NEMA 3R, 2017 NEC 406.9 (b); Where a weatherproof-in-use cover is required for 15 or 20 AMP receptacles installed outdoors. Add suffix "GC" to Catalog # when ordering in Canada, for example DBVME1CGC.

Replacement covers available on page K-17.

**PATENTED. ADDITIONAL PATENTS PENDING.**

**WEATHERPROOF-IN-USE**  
**EXTRA-DUTY**



Bug Plugs ship installed in all IN BOX styles to seal unused cord hole openings.

### IN BOX for 1-1/2" wall systems includes...

Box with weatherproof-in-use extra-duty cover, installed bug plugs, (1) standard duplex and (1) standard GFCI face plate, (1) NM cable connector, and disposable mud cover.

### INSTALLATION SHOTS



Saves Time—Looks Great!

Cover ships with disposable mud cover



Low profile IN BOX for a neat, clean look

