



333 Bayview Avenue  
Amityville, New York 11701  
For Sales and Repairs, (800) 645-9445  
For Technical Service, (800) 645-9440 or visit us at  
<http://tech.napcosecurity.com/>  
(Note: Technical Service is for security professionals only)  
Publicly traded on NASDAQ Symbol: NSSC  
© NAPCO 2017

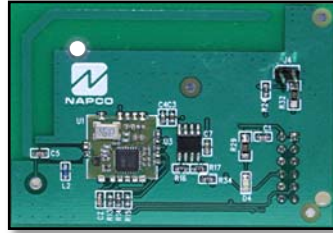
# Z-WAVE WIRELESS HOME CONTROL AND MONITORING

## SLE-ZWAVE-MOD

### INSTALLATION INSTRUCTIONS

WI2195 04/17

The **SLE-ZWAVE-MOD** allows your Napco iBridge® or StarLink™ device to connect to your Z-Wave devices. For more information about the StarLink SLE Commercial and Residential Dual-Path Alarm Communicators, see WI2189 and WI2190. **Note:** The **SLE-ZWAVE-MOD** requires 20mA, therefore the existing battery inside the housing may need to be replaced with a larger battery; verify sufficient power is available if the radio is powered by the FACP.



SLE-ZWAVE-MOD

Prior to opening the **SLE-ZWAVE-MOD** PC board package or touching anything inside the radio enclosure, discharge any static electricity from your body or clothing. Use a grounded wrist strap or touch an unpainted, grounded metal object. Install as follows:

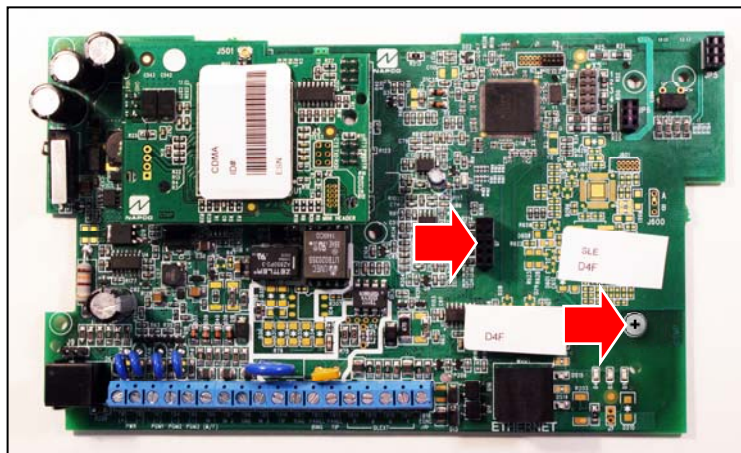


Fig. 2: "Header Socket" (left arrow) and existing screw (right arrow)

1. Power off the radio by disconnecting the positive +VDC +PWR wire from terminal TB1.
2. Remove existing screw (see Fig. 2). This vacant screw hole will be used for the **Standoff** and a supplied **Screw**.
3. Insert the supplied **Screw** into the top of the **SLE-ZWAVE-MOD**.

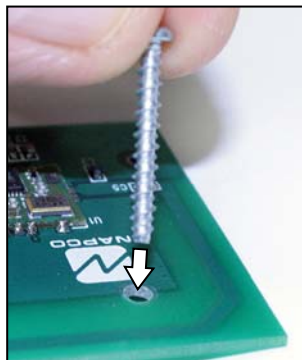


Fig. 3: Insert new "Screw"

4. Slide the **Standoff** (right arrow in Fig. 4) onto the **Screw**. Take note of the **Header Plug** (left arrow in Fig. 4).

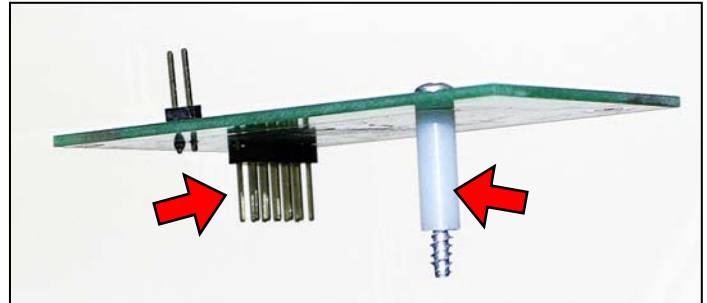


Fig. 4: "Header Plug" (left arrow) and "Standoff" (right arrow)\*

5. Find the radio **Header Socket** (see Fig. 2). With radio power off, align the **Standoff** and **Screw** with the screw hole left vacant in step 2. Carefully align all pins of the **Header Plug** with the **Header Socket**.

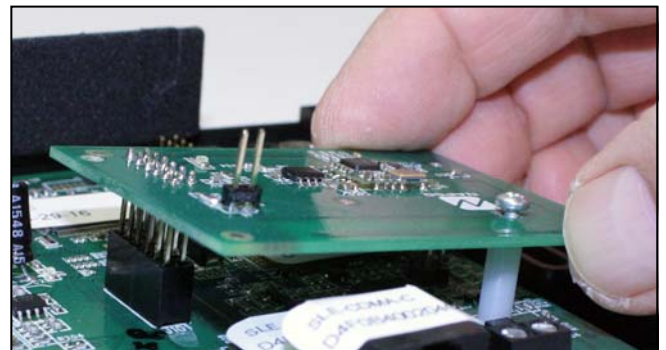


Fig. 5: Align and Insert the SLE-ZWAVE-MOD\*

Push the **SLE-ZWAVE-MOD** into the radio PC board.

6. Tighten the new **Screw**.

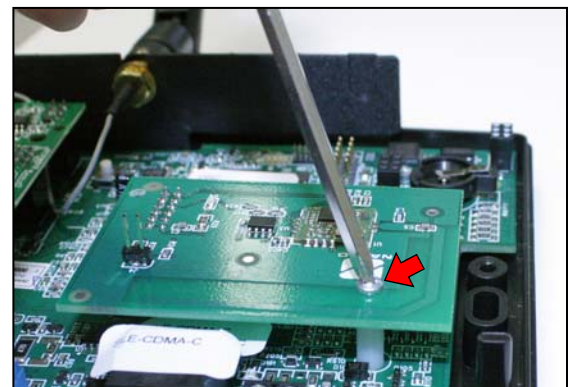


Fig. 6: Tighten the new "Screw" \*

7. Repower the radio by re-connecting the positive +VDC +PWR wire to terminal TB1. Wait 2 minutes for all devices to fully power before proceeding.

\*Note: Two jumper pins shown are reserved for future use.

# NAPCO LIMITED WARRANTY

NAPCO SECURITY SYSTEMS, INC. (NAPCO) warrants its products to be free from manufacturing defects in materials and workmanship for *thirty-six months* following the date of manufacture. NAPCO will, within said period, at its option, repair or replace any product failing to operate correctly without charge to the original purchaser or user.

This warranty shall not apply to any equipment, or any part thereof, which has been repaired by others, improperly installed, improperly used, abused, altered, damaged, subjected to acts of God, or on which any serial numbers have been altered, defaced or removed. Seller will not be responsible for any dismantling or reinstallation charges.

THERE ARE NO WARRANTIES, EXPRESS OR IMPLIED, WHICH EXTEND BEYOND THE DESCRIPTION ON THE FACE HEREOF. THERE IS NO EXPRESS OR IMPLIED WARRANTY OF MERCHANTABILITY OR A WARRANTY OF FITNESS FOR A PARTICULAR PURPOSE. ADDITIONALLY, THIS WARRANTY IS IN LIEU OF ALL OTHER OBLIGATIONS OR LIABILITIES ON THE PART OF NAPCO.

Any action for breach of warranty, including but not limited to any implied warranty of merchantability, must be brought within the six months following the end of the warranty period. IN NO CASE SHALL NAPCO BE LIABLE TO ANYONE FOR ANY CONSEQUENTIAL OR INCIDENTAL DAMAGES FOR BREACH OF THIS OR ANY OTHER WARRANTY, EXPRESS OR IMPLIED, EVEN IF THE LOSS OR DAMAGE IS CAUSED BY THE SELLER'S OWN NEGLIGENCE OR FAULT.

In case of defect, contact the security professional who installed and maintains your security system. In order to exercise the warranty, the product must be returned by the security professional, shipping costs prepaid and insured to NAPCO. After repair or replacement, NAPCO assumes the cost of returning products under warranty. NAPCO shall have no obligation under this warranty, or otherwise, if the product has been repaired by others, improperly installed, improperly used, abused, altered, damaged, subjected to accident, nuisance, flood, fire or acts of God, or on which any serial numbers have been altered, defaced or removed. NAPCO will not be responsible for any dismantling, reassembly or reinstallation charges.

This warranty contains the entire warranty. It is the sole warranty and any prior agreements or representations, whether oral or written, are either merged herein or are expressly cancelled. NAPCO neither assumes, nor authorizes any other person

purporting to act on its behalf to modify, to change, or to assume for it, any other warranty or liability concerning its products.

In no event shall NAPCO be liable for an amount in excess of NAPCO's original selling price of the product, for any loss or damage, whether direct, indirect, incidental, consequential, or otherwise arising out of any failure of the product. Seller's warranty, as hereinabove set forth, shall not be enlarged, diminished or affected by and no obligation or liability shall arise or grow out of Seller's rendering of technical advice or service in connection with Buyer's order of the goods furnished hereunder.

NAPCO RECOMMENDS THAT THE ENTIRE SYSTEM BE COMPLETELY TESTED WEEKLY.

**Warning:** Despite frequent testing, and due to, but not limited to, any or all of the following; criminal tampering, electrical or communications disruption, it is possible for the system to fail to perform as expected. NAPCO does not represent that the product/system may not be compromised or circumvented; or that the product or system will prevent any personal injury or property loss by burglary, robbery, fire or otherwise; nor that the product or system will in all cases provide adequate warning or protection. A properly installed and maintained alarm may only reduce risk of burglary, robbery, fire or otherwise but it is not insurance or a guarantee that these events will not occur. CONSEQUENTLY, SELLER SHALL HAVE NO LIABILITY FOR ANY PERSONAL INJURY, PROPERTY DAMAGE, OR OTHER LOSS BASED ON A CLAIM THE PRODUCT FAILED TO GIVE WARNING. Therefore, the installer should in turn advise the consumer to take any and all precautions for his or her safety including, but not limited to, fleeing the premises and calling police or fire department, in order to mitigate the possibilities of harm and/or damage.

NAPCO is not an insurer of either the property or safety of the user's family or employees, and limits its liability for any loss or damage including incidental or consequential damages to NAPCO's original selling price of the product regardless of the cause of such loss or damage.

Some states do not allow limitations on how long an implied warranty lasts or do not allow the exclusion or limitation of incidental or consequential damages, or differentiate in their treatment of limitations of liability for ordinary or gross negligence, so the above limitations or exclusions may not apply to you. This Warranty gives you specific legal rights and you may also have other rights which vary from state to state.