

# FIBER TRANSITION CASE (FTC2)

## Installation Instructions: Gang Box

### CONFIGURATIONS

125-1778

FTC2 Standard

125-1828

FTC2 w/ SC/APC fiber adapter

125-1827

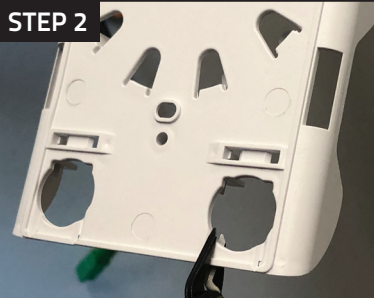
FTC2 w/angled shutter SC/APC adapter

### STEP 1



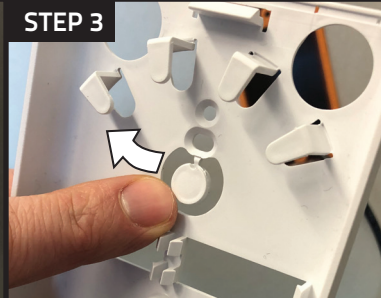
**Pull Fiber**  
Through open gang box or mud ring.

### STEP 2



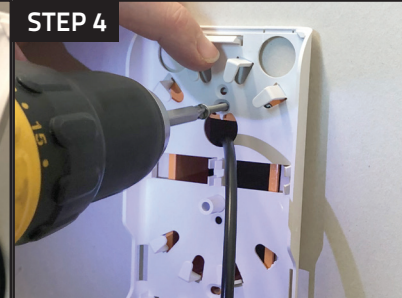
**(If using angled adapter)**  
**Remove Cut-away Tab**  
Using flush cutters on desired port.

### STEP 3



**Remove Cap**

### STEP 4



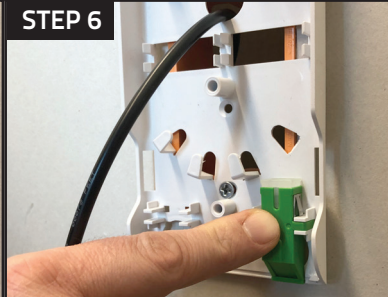
**Secure FTC2 to Gang Box**  
Using provided screws.

### STEP 5



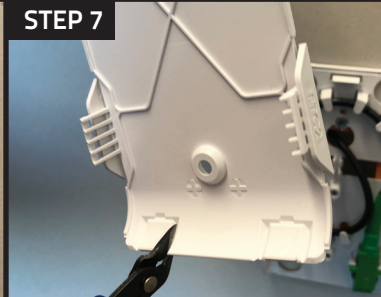
**Remove Obstructing Fiber Tabs**  
As needed.

### STEP 6



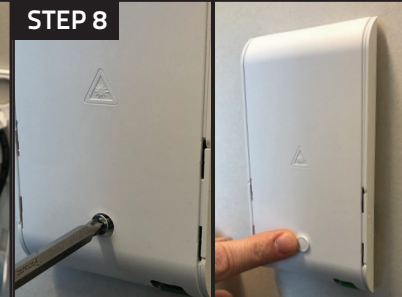
**Insert Angled Adapter**

### STEP 7



**Open Breakout Port**  
Using flush cutters on desired port.

### STEP 8



**Install Lid**  
Secure with screw and cap.

FOR MORE INFORMATION CONTACT:

📞 1.604.881.7875 📠 1.604.881.7835

[www.primex.com](http://www.primex.com)     

452-2130

**primex**   
Fit everything. Together.

# FIBER TRANSITION CASE (FTC2)

Installation Instructions: Inside SOHOpro™ Media Panel

## STEP 1



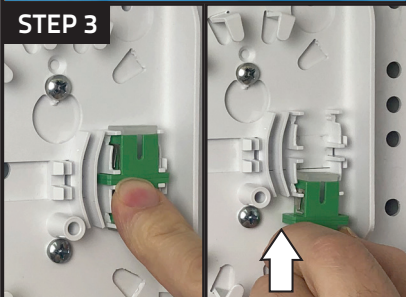
**Install FTC2 in Media Panel**  
Using provided screws.

## STEP 2



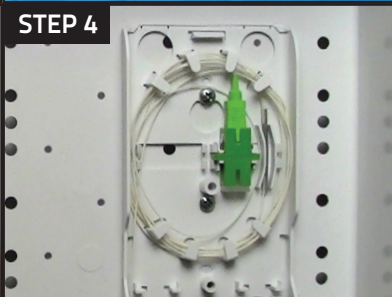
**Install Hybrid Splice Adapter Clip**  
Press into position.

## STEP 3



**Install Adapter**  
Press into center position. Slide into lower position if using long boot adapters.

## STEP 4



**Install Splice Sleeve (if required)**  
Hybrid splice adapter clip accommodates single fusion, mechanical and ribbon splices.

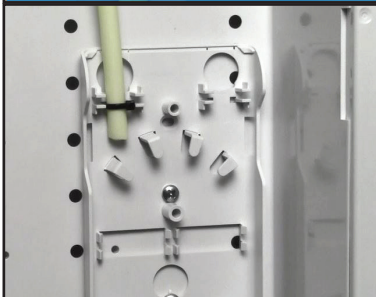
# PRODUCT FEATURES



**Remove Cap**  
Using telecom spudger tool.



**Removing Lid**  
Press firmly with thumb and twist.



**Installing Microduct**  
Install with ports facing upwards. Secure microduct with cable tie through slots.



**Breakout Ports**  
For microduct and BIF fiber.

FOR MORE INFORMATION CONTACT:

📞 1.604.881.7875 📠 1.604.881.7835

[www.primex.com](http://www.primex.com)     

452-2130

**primex**   
Fit everything. Together.