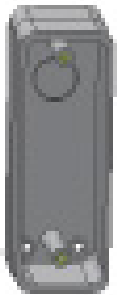


PUSH PLATE BOXES

Flush and surface housing for push plates



DESCRIPTION



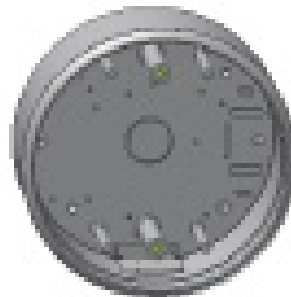
4" JAMB

Surface-Mount – 8310-819S
Flush-Mount – 8310-819F



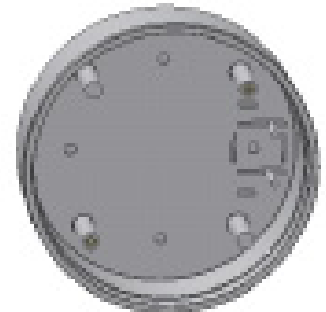
4 ¾" SQUARE

Surface-Mount – 8310-867S
Flush-Mount – 8310-867F
Weather Ring – 8310-801



4 ½" ROUND

Surface-Mount – 8310-868S
Flush-Mount – 8310-868F
Weather Ring – 8310-800



6" ROUND

Surface-Mount – 8310-869S
Flush-Mount – 8310-869F
Weather Ring – 8310-802

PRECAUTIONS



- ❑ Shut off all power going to header before attempting any wiring procedures.
- ❑ Maintain a clean and safe environment when working in public areas.
- ❑ Constantly be aware of pedestrian traffic around the door area.
- ❑ Always stop pedestrian traffic through the doorway when performing tests that may result in unexpected reactions by the door.
- ❑ *ESD (electrostatic discharge):* Circuit boards are vulnerable to damage by electrostatic discharge. Before handling any board, ensure you dissipate your body's ESD charge.
- ❑ Always check placement of all wiring before powering up to ensure that moving door parts will not catch any wires and cause damage to equipment.
- ❑ Ensure compliance with all applicable safety standards (i.e. ANSI A156.10) upon completion of installation.
- ❑ DO NOT attempt any internal repair of the components. Unauthorized disassembly or repair:
 1. May jeopardize personal safety and may expose one to the risk of electrical shock.
 2. May adversely affect the safe and reliable performance of the product resulting in a voided warranty.

MOUNTING

1

If this installation will be hard-wired to a door control, you must remove the back (for round) or bottom (of square), and then route the appropriate wire to the box.



Surface-mount (above, left): Securely attach using corner holes.

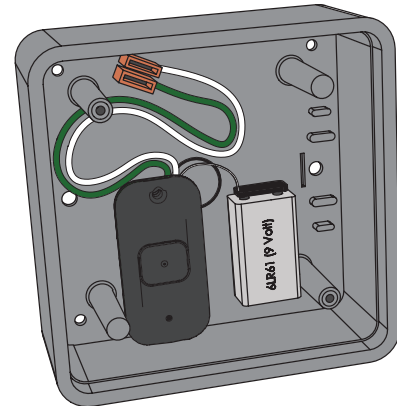
Flush-mount (above, right): Cut hole in mounting surface to fit galvanized steel bracket. Tighten the two screws that secure the bracket to the surface.

2

OPTIONAL: Mount a wireless transmitter inside (see steps a – d). Use the Velcro® provided with the transmitter or a battery clip.

Jamb-size boxes will require the 3V transmitter (8310-844J).

- Attach leads to the switch on the push plate.
- Attach battery clip in the designated area.
- Using Velcro®, attach the transmitter to the housing.
- Clip or attach using Velcro® the 9V battery.



INSTALLATION/SERVICE COMPLIANCE EXPECTATIONS

The sensor manufacturer cannot be held responsible for incorrect installations or inappropriate adjustments of the sensor/device; therefore, the sensor manufacturer does not guarantee any use of the sensor outside of its intended purpose.

The sensor manufacturer strongly recommends that installation and service technicians be AAADM-certified for pedestrian doors, IDA-certified for doors/gates, and factory-trained for the type of door/gate system.

Installers and service personnel are responsible for executing a risk assessment following each installation/service performed, ensuring that the sensor system installation is compliant with local, national, and international regulations, codes, and standards.

Once installation or service work is complete, a safety inspection of the door/gate shall be performed per the door/gate manufacturer recommendations and/or per AAADM/ANSI/DASMA guidelines (where applicable) for best industry practices. Safety inspections must be performed during each service call – examples of these safety inspections can be found on an AAADM safety information label (e.g. ANSI/DASMA 102, ANSI/DASMA 107).

Verify that all appropriate industry signage and warning labels are in place.



Do not leave problems unresolved. If a satisfactory solution cannot be achieved after troubleshooting a problem, please contact Allegion at 1-877-671-7011. If you must wait for the following workday to call Allegion, leave the door inoperable until satisfactory repairs can be made. Never sacrifice the safe operation of the automatic door or gate for an incomplete solution.

For more information, visit www.allegion.com.

