

2

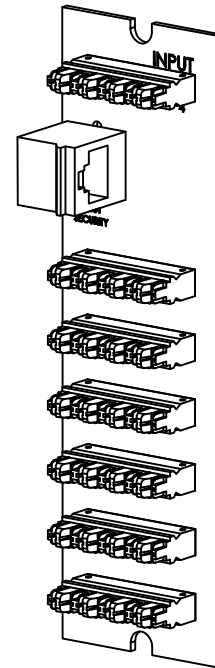
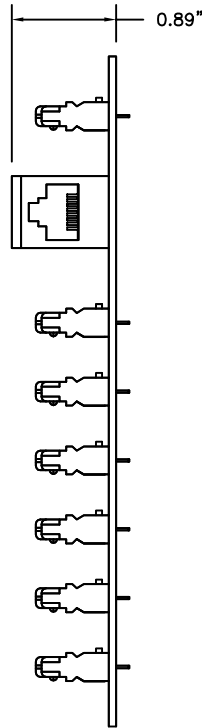
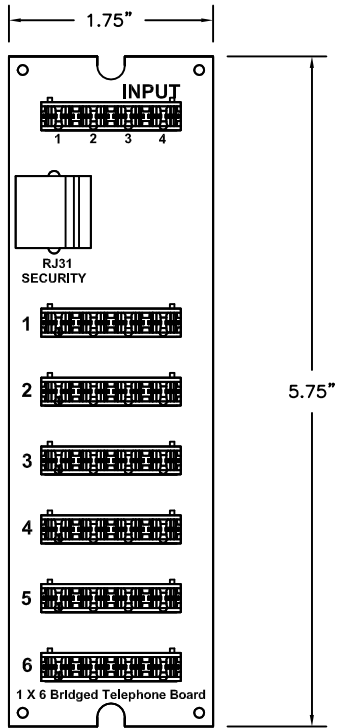
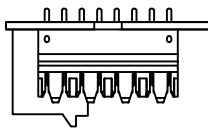
1

NOTES:  
 ELECTRICAL  
 Electrical Insulation Resistance : 500MΩ min. @ 100V d.c  
 Dielectric Withstanding Voltage : 1000V d.c. or  
 a.c. Peak Contact to Contact @ 60Hz for 1 minute

MECHANICAL  
 Insertion / Extraction Life : 750 Cycles Minimum  
 IDC Wire Gauge : 22 ~ 24 AWG  
 Housing : High-Impact, Flame-Retardant Plastic,  
 UL 94V-0  
 Spring Wire : Phosphor Bronze Alloy Plated With  
 50 micro-inch of Gold  
 IDC : Phosphor Bronze Alloy With 100  
 micro-inch 100% Sn Alloy

B

B



A

A

PROPRIETARY AND CONFIDENTIAL  
 THE INFORMATION CONTAINED  
 IN THIS DRAWING IS THE SOLE  
 PROPERTY OF ON-Q/LEGRAND.  
 ANY REPRODUCTION IN PART OR  
 AS A WHOLE WITHOUT THE WRITTEN  
 PERMISSION OF ON-Q/LEGRAND  
 IS PROHIBITED. DRAWING IS SUBJECT  
 TO CHANGE WITHOUT NOTICE.



P.O. Box 60907  
 Middletown, PA 17106-0907  
 1-800-321-2343

TITLE:  
**1X6 BRIDGED TELEPHONE BOARD**

SIZE	DWG NO	FILE NAME	CUST REV
A	TM0106	CD-TM0106	1
REVISED DATE	SCALE	SHEET	
15/09/22	NONE	1 OF 1	

2

1