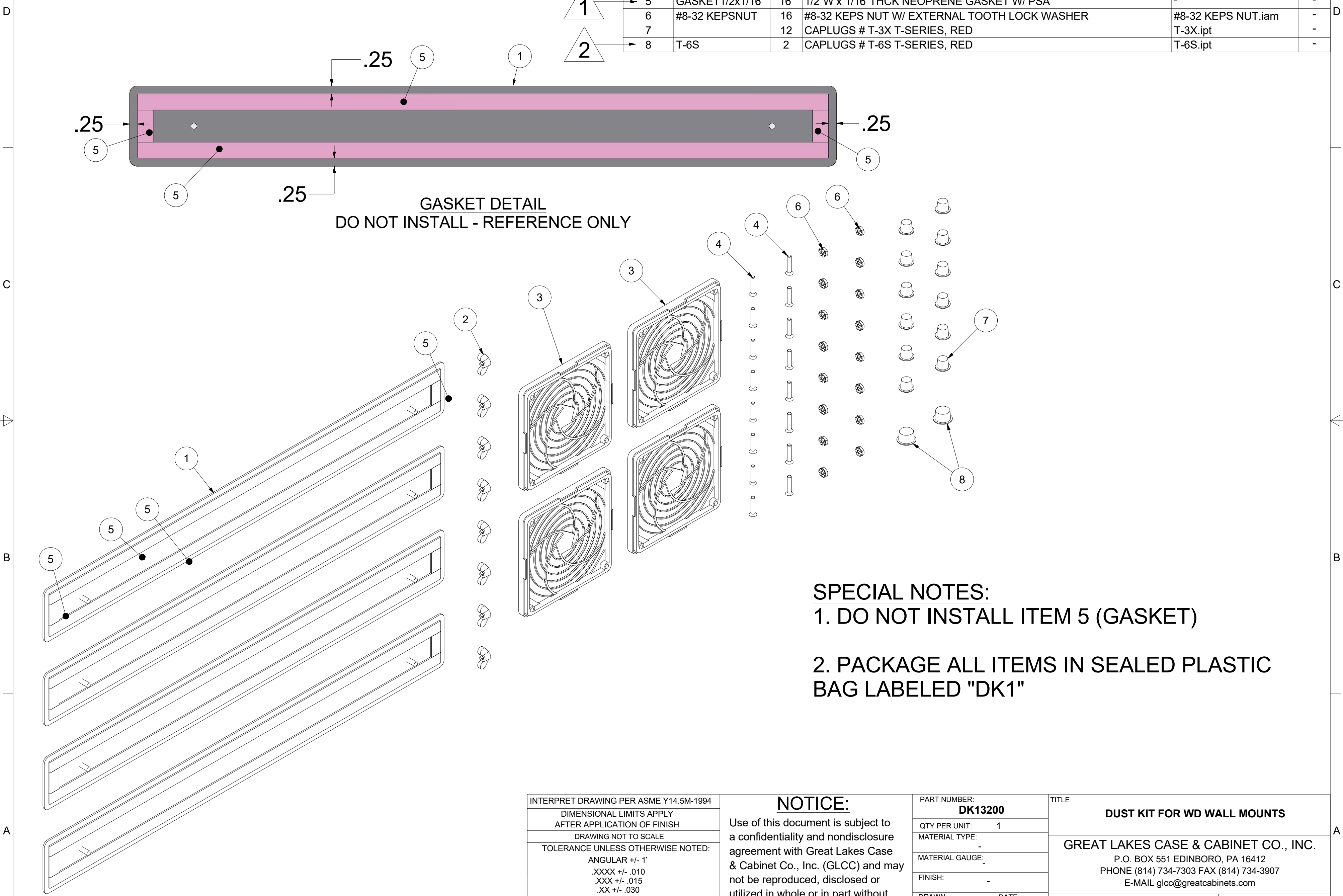


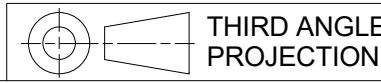
REVISION HISTORY			
REV	DESCRIPTION	DATE	APPROVED
0	ECO-01700	2/23/2006	WSS
1	ECO-02472	1/27/09	WSS
2	ECO-02732	12/16/2009	JL

Bill of Material					
ITEM	PART NUMBER	QTY	DESCRIPTION	FILE NAME	REV
1	DK13100	4	DUST COVER PLATE FOR "WD" WALL MOUNTS	I003818.iam	0
2		8	#10-32 WING NUT 2ZN36616	10-32WING.ipt	-
3	XF04A	4	FILTER FOR 4" FAN BLACK FOAM MEDIA QUALTEK	XF04A.iam	-
4	8/32X3/4SCBLK	16	#8-32 x 3/4" LG BLACK OXIDE, WAX COAT, TYPE-F, PHIL. FLAT HEAD	8-32X750SCBLK.ipt	-
5	GASKET1/2x1/16	16	1/2"W x 1/16" THCK NEOPRENE GASKET W/ PSA	-	-
6	#8-32 KEPSNUT	16	#8-32 KEPS NUT W/ EXTERNAL TOOTH LOCK WASHER	#8-32 KEPS NUT.iam	-
7		12	CAPPLUGS # T-3X T-SERIES, RED	T-3X.ipt	-
8	T-6S	2	CAPPLUGS # T-6S T-SERIES, RED	T-6S.ipt	-



GASKET DETAIL  
DO NOT INSTALL - REFERENCE ONLY

**SPECIAL NOTES:**  
 1. DO NOT INSTALL ITEM 5 (GASKET)  
 2. PACKAGE ALL ITEMS IN SEALED PLASTIC BAG LABELED "DK1"

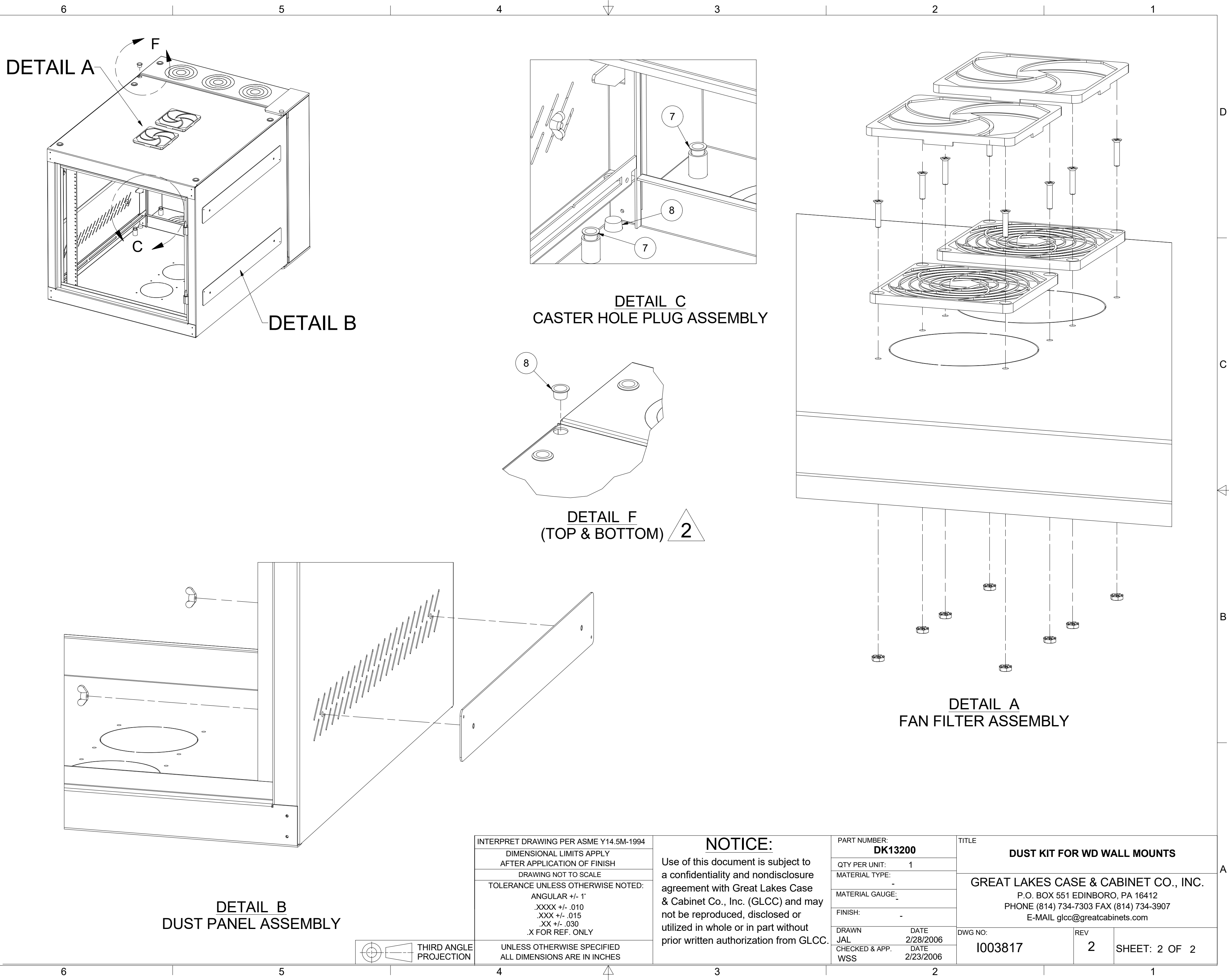


INTERPRET DRAWING PER ASME Y14.5M-1994  
 DIMENSIONAL LIMITS APPLY AFTER APPLICATION OF FINISH  
 DRAWING NOT TO SCALE  
 TOLERANCE UNLESS OTHERWISE NOTED:  
 ANGULAR +/- 1'  
 .XXX +/- .010  
 .XXX +/- .015  
 .XX +/- .030  
 .X FOR REF. ONLY  
 UNLESS OTHERWISE SPECIFIED ALL DIMENSIONS ARE IN INCHES

**NOTICE:**  
 Use of this document is subject to a confidentiality and nondisclosure agreement with Great Lakes Case & Cabinet Co., Inc. (GLCC) and may not be reproduced, disclosed or utilized in whole or in part without prior written authorization from GLCC.

PART NUMBER: **DK13200**  
 QTY PER UNIT: 1  
 MATERIAL TYPE: -  
 MATERIAL GAUGE: -  
 FINISH: -  
 DRAWN: JAL DATE: 2/22/2006  
 CHECKED & APP. DATE: WSS 2/23/2006

TITLE: **DUST KIT FOR WD WALL MOUNTS**  
**GREAT LAKES CASE & CABINET CO., INC.**  
 P.O. BOX 551 EDINBORO, PA 16412  
 PHONE (814) 734-7303 FAX (814) 734-3907  
 E-MAIL glcc@greatcabinets.com  
 DWG NO: **I003817** REV: **2** SHEET: 1 OF 2



DETAIL A

DETAIL B

DETAIL C  
CASTER HOLE PLUG ASSEMBLY

DETAIL F  
(TOP & BOTTOM) 2

DETAIL A  
FAN FILTER ASSEMBLY

DETAIL B  
DUST PANEL ASSEMBLY

INTERPRET DRAWING PER ASME Y14.5M-1994
DIMENSIONAL LIMITS APPLY AFTER APPLICATION OF FINISH
DRAWING NOT TO SCALE
TOLERANCE UNLESS OTHERWISE NOTED:
ANGULAR +/- 1°
.XXXX +/- .010
.XXX +/- .015
.XX +/- .030
.X FOR REF. ONLY
UNLESS OTHERWISE SPECIFIED ALL DIMENSIONS ARE IN INCHES

**NOTICE:**  
Use of this document is subject to a confidentiality and nondisclosure agreement with Great Lakes Case & Cabinet Co., Inc. (GLCC) and may not be reproduced, disclosed or utilized in whole or in part without prior written authorization from GLCC.

PART NUMBER: <b>DK13200</b>	
QTY PER UNIT:	1
MATERIAL TYPE:	-
MATERIAL GAUGE:	-
FINISH:	-
DRAWN JAL	DATE 2/28/2006
CHECKED & APP. WSS	DATE 2/23/2006

TITLE <b>DUST KIT FOR WD WALL MOUNTS</b>		
GREAT LAKES CASE & CABINET CO., INC. P.O. BOX 551 EDINBORO, PA 16412 PHONE (814) 734-7303 FAX (814) 734-3907 E-MAIL glcc@greatcabinets.com		
DWG NO: <b>1003817</b>	REV <b>2</b>	SHEET: 2 OF 2

