



CDVI

EN ENGLISH

FR FRANCAIS



VHESF VHESS

***Infrared Very Handy Exit Switch
Bouton de sortie infrarouge sans contact***

The installer's choice
cdvigroup.com

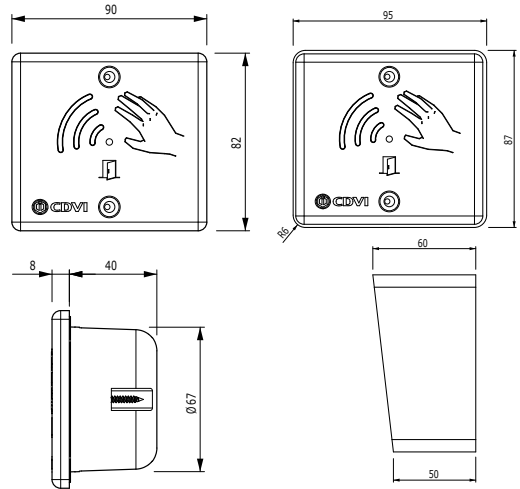
VHESF - VHES

Infrared Very Handy Exit Switch

Thank you for buying our products and for the confidence you placed in our company.

1] GENERAL INFORMATION

- **Infrared request to Exit Switch.**
- **Stainless steel.**
- **Range:** 25 to 50cm.
- **Visual feedback:** - Blue, in stand-by,
- Green during activation.
- **Audible feedback.**
- **Time control:** 2 to 2,5 sec.
- **Internal/external use.**
- **Surface mount (VHES) or flush mount (VHESF).**
- Input voltage: 9/15VDC.
- Consumption:
 - stand-by = 25mA.
 - in activation = 65mA.



Recommended power supplies



WEEE



CE Certification



IP42



-30°C to +70°C



HIGH RESISTANCE TO VANDALISM

2] NOTES & RECOMMENDATIONS

use

Contact with the product is not necessary. the switch is activated by a simple movement of the hand, up and down at a distance.




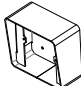
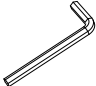

Recommended cables

Recommended 8/10th cable (AWG20).

Mounting

To optimize the setting of the product and prevent attempts to pull, choose flat surfaces.

3] MOUNTING KIT

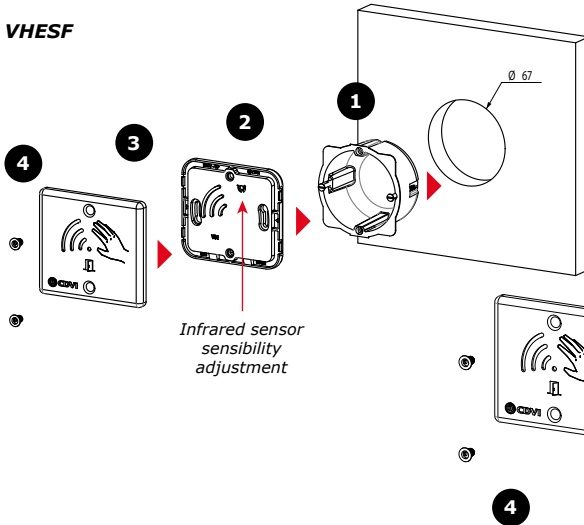
						
	VHES front side	Diaux® screw	Flush mount box	surface mount box	Diaux® key	M4x6 screw
VHES	1	2	-	1	1	2
VHESF	1	2	1	-	1	-

VHESF - VHES

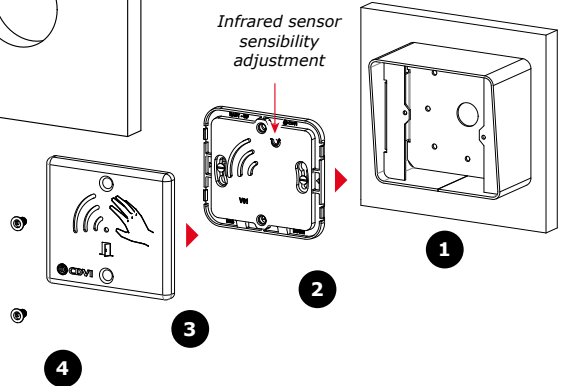
Infrared Very Handy Exit Switch

4] MOUNTING

VHESF

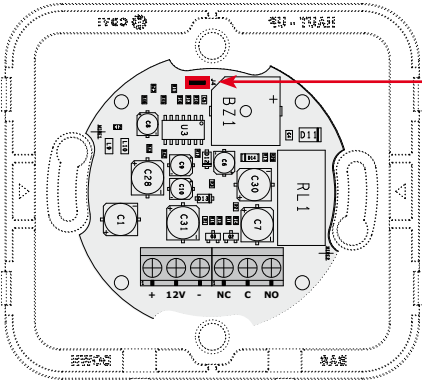


VHES



5] WIRING AND ADJUSTMENT

BACK SIDE

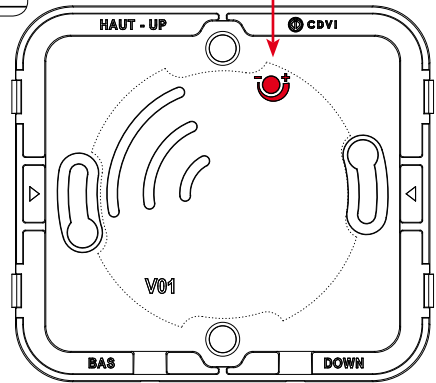


To shut down the buzzer, cut the strap



Infrared sensor sensibility adjustment

Minimum 25cm - + Maximum 50cm



FRONT SIDE

TERMINAL

+	Input voltage 12VDC
-	In put voltage 0V
NC	Normally closed contact
C	Common
NO	Normally open contact

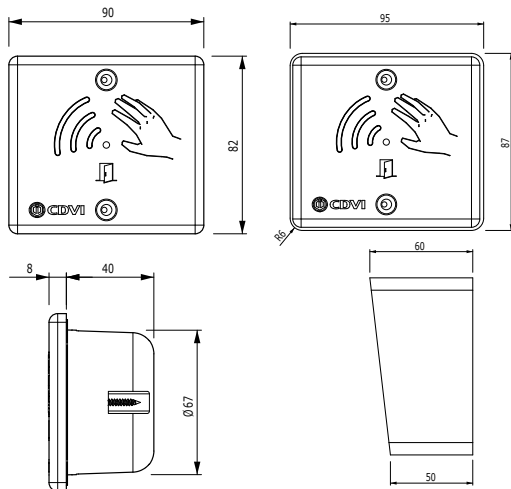
VHESF - VHES

Bouton de sortie infrarouge

Merci pour l'achat de ce produit et pour la confiance que vous accordez à notre entreprise.

1] PRESENTATION DU PRODUIT

- **Bouton de sortie infrarouge.**
- **Inox.**
- **Signalisation lumineuse :**
 - Bleu, en veille,
 - Vert, pendant la détection.
- **Portée: 25 à 50 cm.**
- **Buzzer.**
- **Durée de commande : 2 à 2,5 sec.**
- **Utilisation interne/externe.**
- **Applique (VHES) ou encastré (VHESF).**
- Alimentation : 9/15 V DC.
- Consommation :
 - courant en veille = 25 mA.
 - courant normale = 65 mA.



Alimentation préconisées



DEEE



Certification CE



IP42



-30°C à +70°C



2] RAPPELS ET RECOMMANDATIONS

Utilisation

Le contact avec le produit n'est pas nécessaire. le déclenchement s'active par un simple mouvement de la main de haut en bas et à distance.




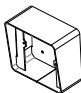
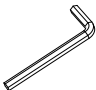

Câbles préconisés

Câble préconisés 8/10^{ème} (AWG20).

Montage

Afin d'optimiser la fixation du produit et de prévenir les tentatives d'arrachage, privilégiez les surfaces planes.

3] ÉLÉMENTS FOURNIS

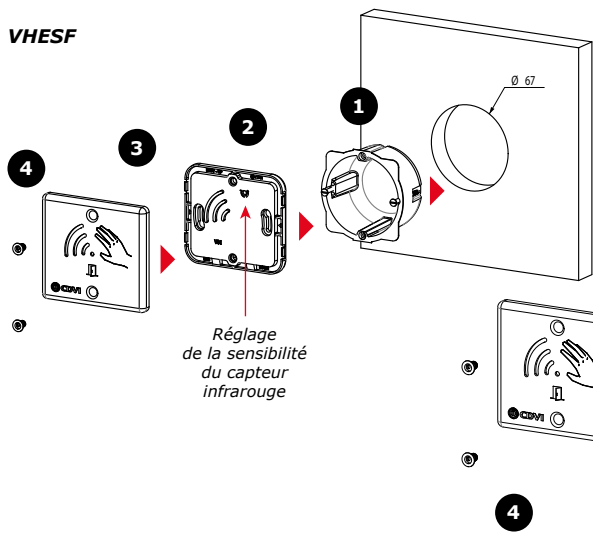
						
	Façade VHES	Vis Dixax®	Boitier d'encastrement	Boitier applique	clé Dixax®	Vis M4x6
VHES	1	2	-	1	1	2
VHESF	1	2	1	-	1	-

VHESF - VHES

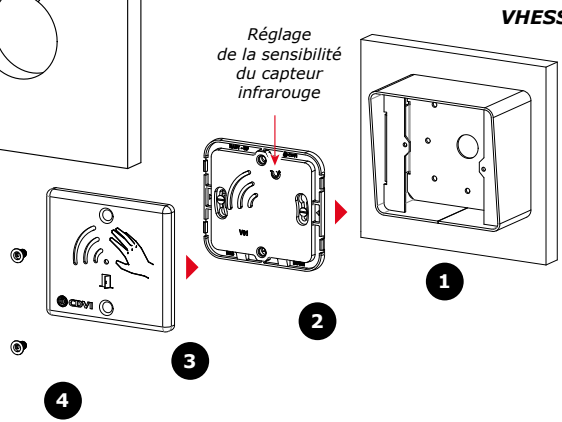
Bouton de sortie infrarouge

4] MONTAGE

VHESF

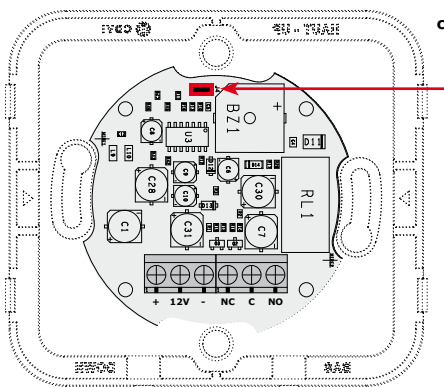


VHES



5] RACCORDEMENT ET RÉGLAGES

FACE ARRIÈRE

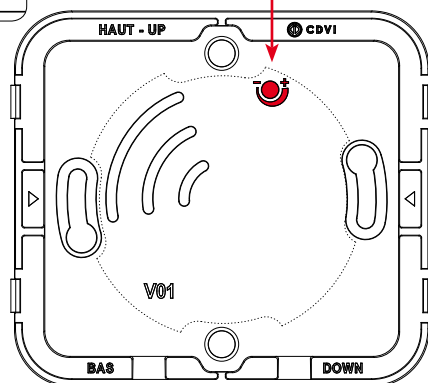


Pour supprimer le buzzer, coupez le strap



Réglage de la sensibilité du capteur infrarouge

Minimum 25 cm - + Maximum 50 cm



FACE AVANT

BORNIER

+	Alimentation 12V DC
-	Alimentation 0 V
NC	Contact normalement fermé
C	Commun
NO	Contact normalement ouvert

Reference : G0301FR0442V01
Extranet : CDVI_IM VHESF-VHES CMYK A5 EN-FR 01



CDVI Group

FRANCE (Headquarter/Siège social)
Phone: +33 (0)1 48 91 01 02
Fax: +33 (0)1 48 91 21 21

CDVI

FRANCE + EXPORT
Phone: +33 (0)1 48 91 01 02
Fax: +33 (0)1 48 91 21 21

CDVI AMERICAS

[CANADA - USA]
Phone: +1 (450) 682 7945
Fax: +1 (450) 682 9590

CDVI

BENELUX
[BELGIUM - NETHERLAND - LUXEMBOURG]
Phone: +32 (0) 56 73 93 00
Fax: +32 (0) 56 73 93 05

CDVI

TAIWAN
Phone: +886 (0)42471 2188
Fax: +886 (0)42471 2131

CDVI

SUISSE
Phone: +41 (0)21 882 18 41
Fax: +41 (0)21 882 18 42

CDVI

CHINA
Phone: +86 (0)10 62414516
Fax: +86 (0)10 62414519

CDVI

IBÉRICA
[SPAIN - PORTUGAL]
Phone: +34 (0)935 390 966
Fax: +34 (0)935 390 970

CDVI

ITALIA
Phone: +39 0331 97 38 08
Fax: +39 0331 97 39 70

CDVI

MAROC
Phone: +212 (0)5 22 48 09 40
Fax: +212 (0)5 22 48 34 69

CDVI

SWEDEN
[SWEDEN - DENMARK - NORWAY - FINLAND]
Phone: +46 (0)31 760 19 30
Fax: +46 (0)31 748 09 30

CDVI

UK
[UNITED KINGDOM - IRELAND]
Phone: +44 (0)1628 531300
Fax: +44 (0)1628 531003

DIGIT

FRANCE
Phone: +33 (0)1 41 71 06 85
Fax: +33 (0)1 41 71 06 86

All the information contained within this document (pictures, drawing, features, specifications and dimensions) could be perceptibly different and can be changed without prior notice.
Toutes les informations mentionnées à titre indicatif sur le présent document (photos, dessins, caractéristiques techniques et dimensions) peuvent varier et sont susceptibles de modifications sans notification préalable.

The installer's choice
cdvigroup.com