

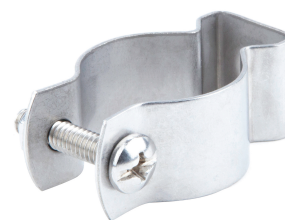
# Product Specifications



## 1" Stainless Steel Conduit Hanger w/ Hex Nut & Bolt

**Part Number** PH100BSS  
**Category Number** 5221  
**UPC** 781002814993

Stainless Steel Conduit Hangers are used to secure and suspend EMT, PVC or rigid conduit in overhead applications. They are manufactured from 304 stainless steel and come assembled with combo round head screws and hex nuts.



### Physical Characteristics

Type	Conduit Hanger
Style	EMT & Pipe
EMT Size (in)	1"
Pipe Size (in)	1"
Rod Size	1/4"
Bolt Size	1/4"-20 x 1-1/4"
Connection	Clamp On
Material	304 Stainless Steel
Gauge	18

### Performance Data

Applications	Secures and Suspends EMT, PVC, or Rigid Conduit In Overhead Applications
Special Features	Stainless Steel Combo Round Head Screws, Corrosion Resistant
For Use With	EMT, PVC, or Rigid

### Packaging Details

Standard Qty	5
Master Qty	50
Price Per	100
Package Length	4.33
Package Width	2.83
Package Height	2.13
Net Weight	0.11
Package Weight	.55

### Certifications

RoHS Compliant	Yes
----------------	-----