

Aura™ CM-55i

Flush Mount Illuminated Enclosure

INSTALLATION INSTRUCTIONS

THIS PACKAGE INCLUDES:

- 1- CM-55i
- 1- Red / Green / Blue Aura PCB
- 2- Dry Wall Bracket
- 2- 8-32 x 1-1/2" Screws
- 2- #6 x 3/8" Screws

1. GENERAL DESCRIPTION

Camden Aura™, Model CM-55i provide the Industry's 1st "Changing State" illuminated switch enclosures.

They offer field selectable red/green/blue illumination, activated directly by the switch or remotely by a relay* such as our CX-33 or EMF-2, a time-clock or access control system.

User selectable features include a 3 Amp Form C relay, and piezo speaker for audible annunciation, as well as control over the idle and active LED colours. Another exclusive is the ability to plug in a TX-9 RF transmitter, thereby requiring only 2 conductors be run for power (no batteries required).

The box is made of impact and flame resistant black ABS, and compatible with any Camden CM-41, CM-45, or CM-46 series switch. The illumination is provided by an array of super-bright and energy efficient LED's, which can be powered by 12 or 24 volts AC/DC.

2. SPECIFICATIONS

Input Voltage	12 or 24V AC/DC
Output Voltage	3 Volts DC for TX-9 (only)
Current draw	250 mA @ 12VDC / 110 mA @ 24VDC
Contact Rating	3A @ 30 VDC
Lumina Red	14.8 lumens, 1600 mW
Lumina Green	3.8 lumens, 330 mW
Sounder	3200 ± 300 Hz @ 85 dB
Relay Contact	1 x Form C
Mounting	4 x #12 wood screws with anchors
Construction	Flame-resistant black ABS (Insert-translucent ABS)
Finish	Attractive pebble finish
Dimensions	6-1/2" H x 6-1/2" W x 2" D (165mm x 165mm x 51mm)

3. SETUP

Switch SW1 contains a bank of 3 dipswitches.

Dipswitch # 3 turns the speaker on or off. Dipswitch # 2 toggles operation of the relay, and # 1 allows you to choose whether the color will be changed locally via the push switch or remotely.

*** NOTE: The CX-12 Plus Multi-Function Relay may be used with the Aura™, however an isolating relay must be wired in parallel with the lock, and the relay's dry contact output wired into the CM-55i.**

Switch	Position	Description
SW1	1	REMOTE / LOCAL On to enable LED color change from idle to Active with press of the push button.
	2	RELAY On to enable operation of the relay with activation of the push button.
	3	SPEAKER On to enable operation of the speaker with activation of the push button.

Color selection is made with Switches SW2 and SW3. SW2 determines the Active color and SW3 determines the Idle color.

Setting the IDLE Color (SW2)

Switch	Position	Description
SW2	1	ON = Red LED when IDLE
	2	ON = Green LED when IDLE
	3	ON = Blue LED when IDLE

Setting the Active Color (SW3)

Switch	Position	Description
SW3	1	ON = Red LED when Active
	2	ON = Green LED when Active
	3	ON = Blue LED when Active

NOTE: If all DIP switches are in the OFF position, there will be no color illuminated. This allows for no Idle color or no Active color.

Once all DIP switches are set, proceed to **Section 4** – Installation.

CM-55i FLUSH MOUNT ILLUMINATED ENCLOSURE

INSTALLATION INSTRUCTIONS

4. INSTALLATION

NOTE: If you will be including the optional Aura™ signage, follow that product's installation instructions before installing Aura™

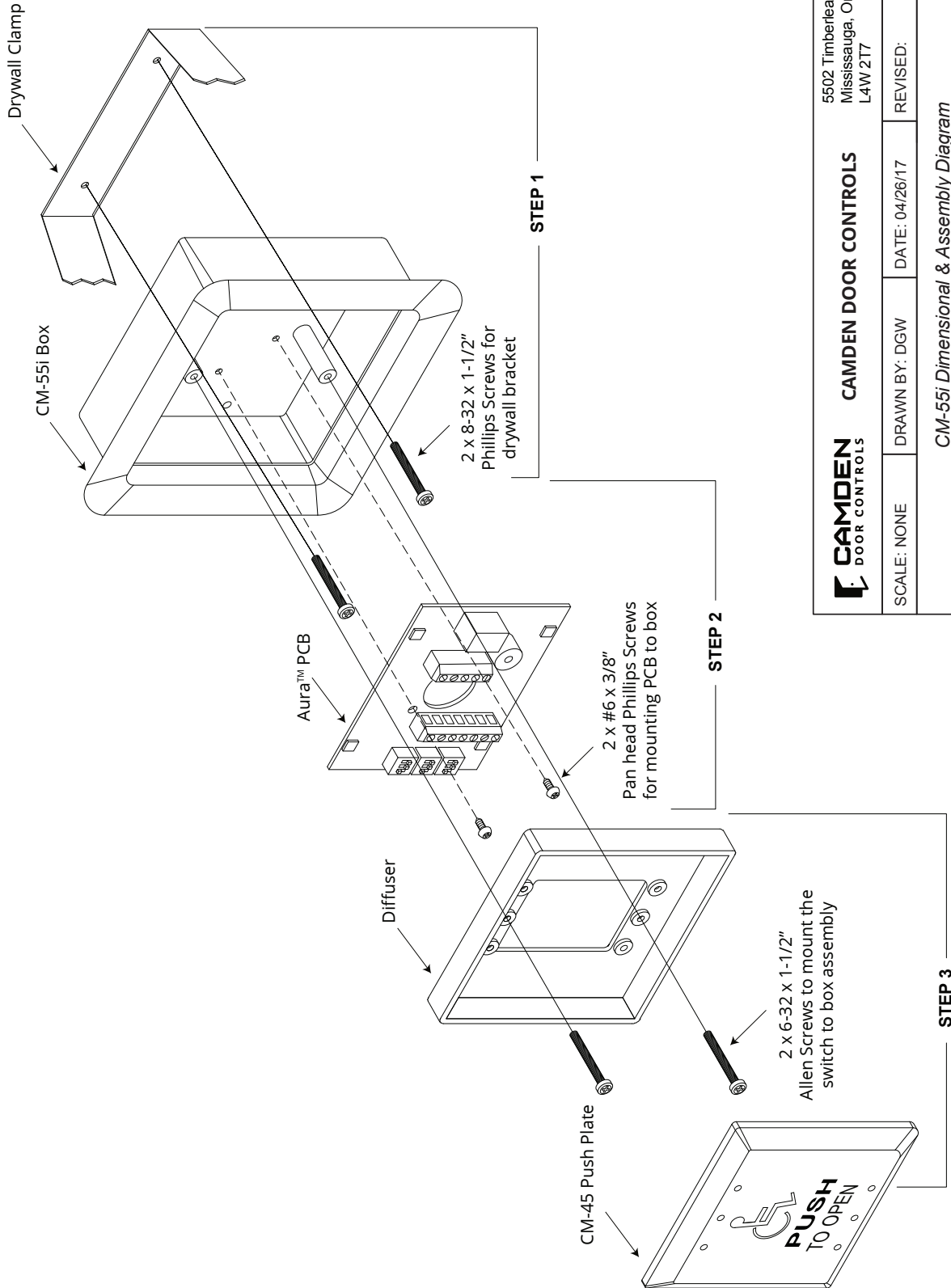
1. Assemble the drywall clamp to the box as per diagram.
Determine the wire access location and drill hole of sufficient size, or use center knock-out plug.
2. Using the template, cut a hole in the drywall. Pull the wiring through the access hole and push the box through until the drywall clamp is on the back of the drywall. Tighten the 8-32 screws until the box is firmly mounted.
3. Remove circuit board from package and locate into the box.
Pull the wire through the hole in centre of circuit board, and then secure with the two small self-tapping screws (provided).
- 4a. Wire as per diagram 2 (typical installation). Route the switch wiring through opaque diffuser panel, and install diffuser panel into box. It should fit snugly.
- 4b. If using a TX-9 transmitter to send the signal to an RX-91 or RX-92 Receiver, attach the transmitter and wire it before installing circuit board into the enclosure and fitting diffuser. See Diagram 3.
5. Screw in two #6-32 Allen-head screws (provided with switch) into the threaded center inserts, then attach wires to switch and install switch over screws. Using the Allen key (provided), locate the screws and tighten (by hand only).
6. Re-connect power and test for proper operation.

5. WARRANTY

Camden Door Controls guarantees the Aura™ (CM-55i series) to be free from manufacturing defects for 3 years from date of sale.

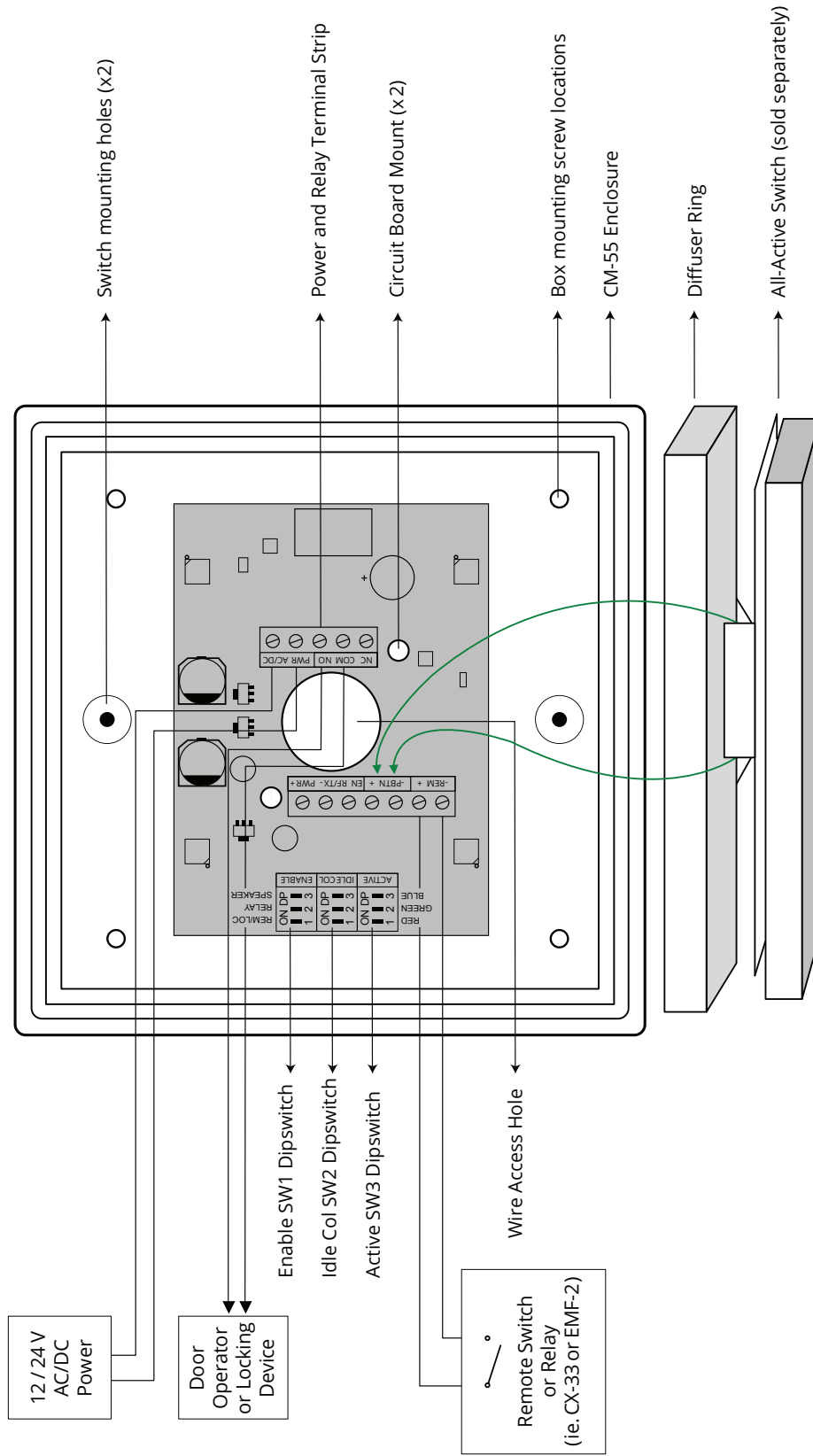
If, during the first 3 years, the Aura™ fails to perform correctly, it may be returned to our factory where it will be repaired or replaced (at our discretion) without charge. Except as stated herein, Camden extends no warranties expressed or implied regarding function, performance or service.

CM-55i Dimensional & Assembly Diagram



		CAMDEN DOOR CONTROLS 5502 Timberlea Blvd. Mississauga, Ontario L4W 2T7	
SCALE: NONE	DRAWN BY: DGW	DATE: 04/26/17	REVISED:
CM-55i Dimensional & Assembly Diagram			
DRAWING No: DRG-CM-55i_01		FILE NAME: CM-55i diagram 1.vsd	

CM-55i Wiring Diagram (Typical)

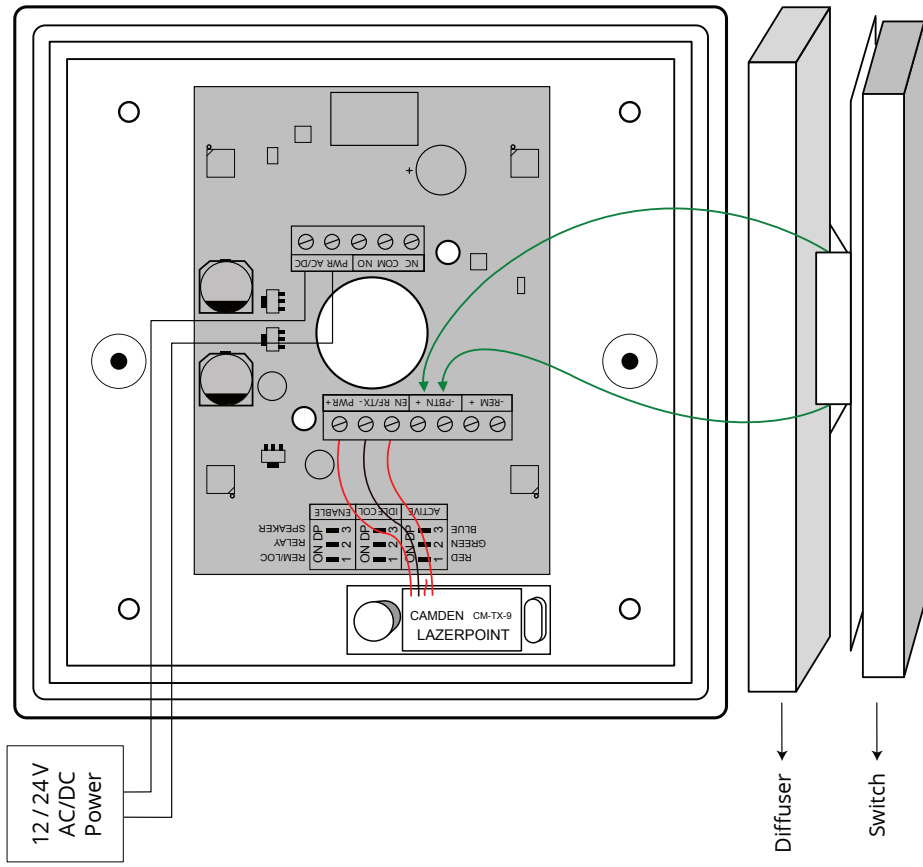


		CAMDEN DOOR CONTROLS 5502 Timberlea Blvd. Mississauga, Ontario L4W 2T7	
SCALE: NONE	DRAWN BY: DGW	DATE: 04/26/17	REVISED:
CM-55i Wiring Diagram (Typical)			
DRAWING No: DRG-CM-55i_02		FILE NAME: CM_55i Diagram2.vsd	

NOTES:

1. Power terminals are not polarity sensitive
2. Typical installation shown, where remote device changes LED color. If it is desired to have switch activation change LED color, set REMOTE/LOCAL dip on SW1 to LOCAL and do not wire to the REMOTE terminals.

CM-55i & TX-9



CAMDEN DOOR CONTROLS
 5502 Timberlea Blvd.
 Mississauga, Ontario
 L4W 2T7

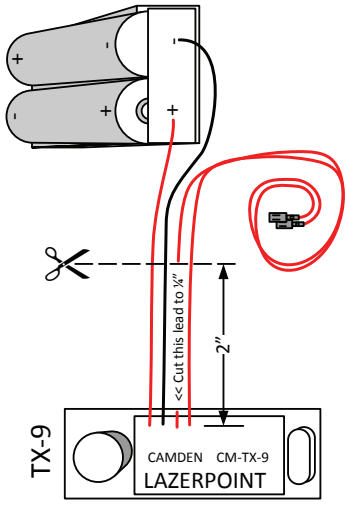
CAMDEN DOOR CONTROLS

SCALE: NONE DRAWN BY: DGW DATE: 04/26/17 REVISED:

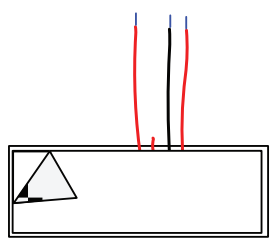
Wiring Diagram for CM-55i & TX-9

DRAWING No: DRG-CM-55i_03 FILE NAME: CM_55i Diagram3.vsd

STEP 1: Cut the middle red lead to 1/4" as it is not used. Cut both battery leads and the remaining switch lead to approximately 2" long. Strip the insulation back on the 3 long ends to approximately 1/4".



STEP 2: Turn over and remove release paper from double-sided tape. Line up and carefully install TX-9 on back surface of mounting box.



STEP 3: Connect the 3 wires from the TX-9 to the circuit board exactly as shown. The middle red wire that was cut short is not used.

STEP 4: Install circuit board in box and connect the 2 power wires as shown. Set dipswitches for desired operation. Install diffuser and connect push switch wires to terminal strip then install switch. Test for proper operation.

- NOTES:**
1. 12/24 Power terminals are not polarity sensitive.
 2. This installation is intended for 2-wire retrofit applications.