

Product Information

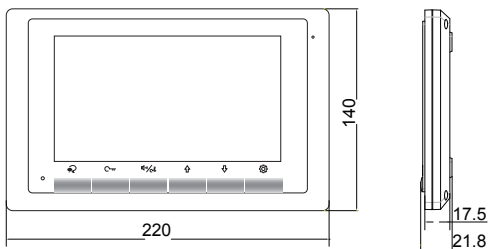
DT17 2-Wire Indoor Monitor



DESCRIPTION

2-wire system 7 inch digital color TFT monitor with dummy mechanical button.

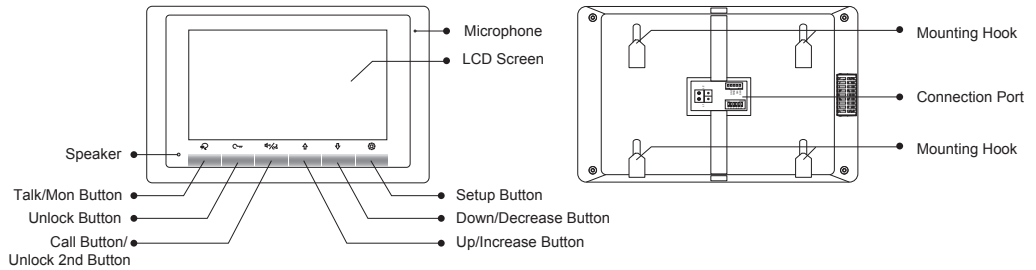
DIMENSION



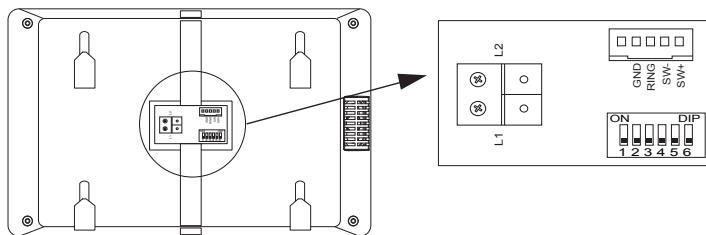
FEATURES

- ▶ Ultra thin design;
 - ▶ Dummy mechanical button-layer design;
 - ▶ Sensitive touch sensor button;
 - ▶ High qualified ABS plastic with signal white color;
 - ▶ Simplified and intuitive menu style;
-

1. Parts and Functions

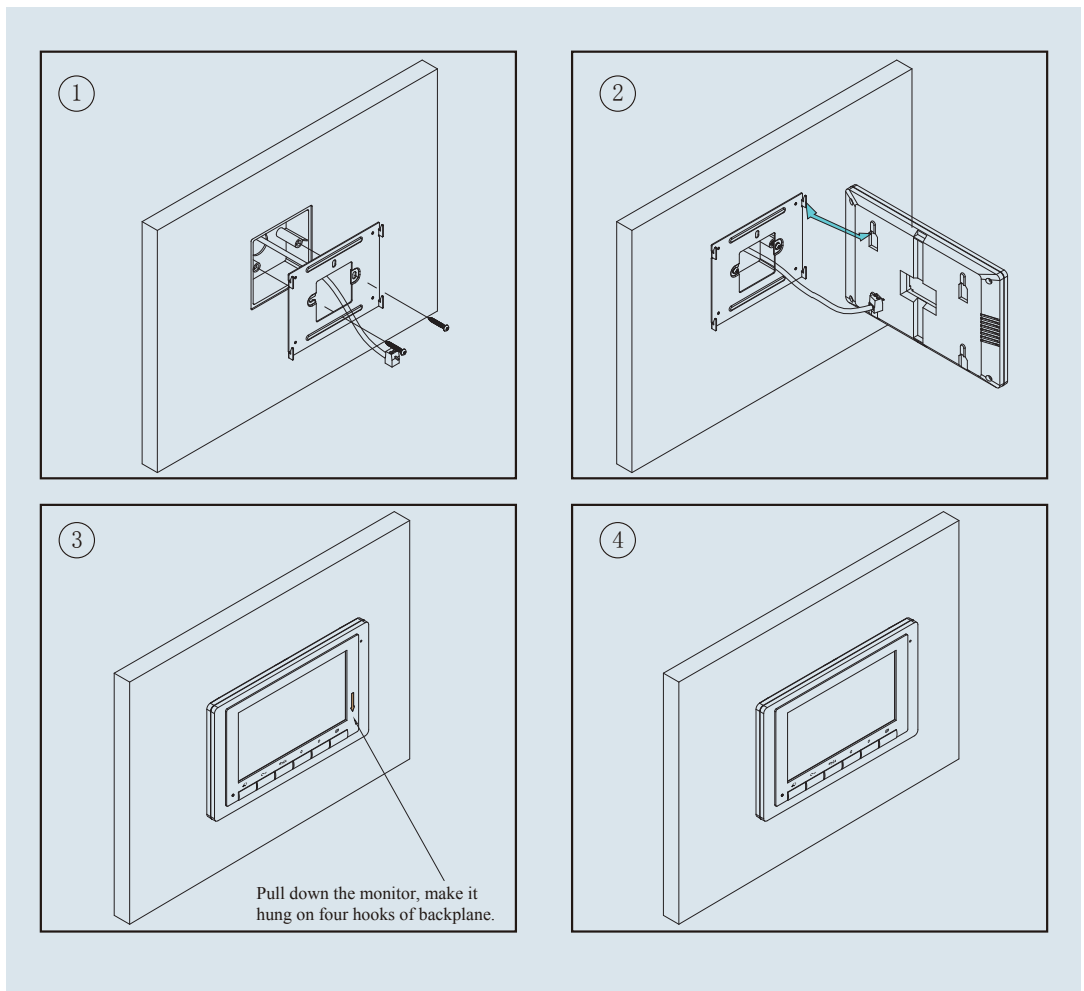


Terminal description



- * L1,L2: Bus terminal.
- * SW+,SW-: Door bell call button connection port.
- * Ring,GND: Extra buzzer connection port.
- * DIP switches: Total 6 bits can be configured.
- * Bit1~Bit5: Used to User Code setting.
- * Bit6: Set to ON if the monitor is at the end of the line or works with DBC4A. Otherwise, set to OFF.

2. Door Station Mounting



3. Specification

- Power supply for indoor monitor: DC 20~28V
- Power consumption: Standby 6.6mA; Working 240mA
- Monitor screen: 7 Inch digital color TFT
- Display Resolutions: 800*3(R, G, B) x 480 pixels
- Video signal: 1Vp-p, 75Ω, CCIR standard
- Wiring: 2 wires, non-polarity
- Dimension: 140(H)×220(W)×17.5(D)mm

4. Ordering Information for Door Station

Model No.	Brief Description	Menu style
DT17/TD7	7 inch digital color TFT monitor with dummy mechanical button & white housing	Color icon

5. Packing Information



Dimensions: 166(H)X244(W) X40(D) mm
Gross Weight: 0.62Kg



Carton: 530 (H)×340 (W)×258 (D)mm
Quantity: 24PCS

6. User Interface: Menu style

