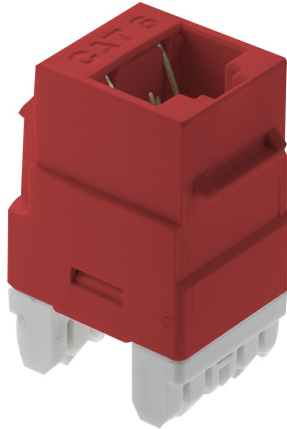


This high quality insert is for use in all Keystone Wall Plates



Features & Benefits

Connects to Cat5, Cat5e, or Cat6 cables terminated with RJ-45 plugs Rear retention caps ensure secure wire termination

T568A and T568B wiring labels included

Insertion and extraction life is 750 Cycles Min

Spring wire is phosphor bronze alloy plated with 50 micro-inch of gold over 100 micro-inches of nickel

Vertical design for easy punchdown termination

Meets Category 6 described in TIA/EIA-568-B.2

Jack housing is high-impact, flame resistant plastic, UL 94V-0

Specifications

General Info

Color	Red	UPC Number	804428024446
-------	-----	------------	--------------

Country Of Origin	Taiwan, Province Of China	Product Line	On-Q
-------------------	---------------------------	--------------	------

Package Quantity	1	Application Sector	Residential
------------------	---	--------------------	-------------

Standard	CSA, cULus, RoHS, ANSI/UL 1863, Flame-Retardant Plastic UL 94V-0
----------	--

Technical Information

Cable Type	Cat 6	Environmental Conditions	0 to 93 (relative humidity, non-condensing)
------------	-------	--------------------------	---

Termination Style	Punchdown
-------------------	-----------

