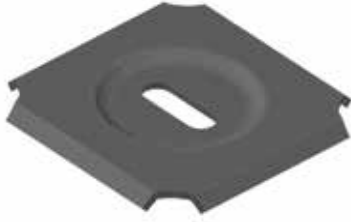


WASHER SUPPORT



PART NUMBER	DESCRIPTION	WT. per box	QUANTITY per box
WASHER SUPPORT	2" square washer used as a hold down method or fitting splice.	6 lbs	50 each

STANDARD FINISH: ZINC PLATED | AVAILABLE IN FINISHES: **BL**, **WH**, **PW**, **CUSTOM**
 *1/4" BOLT AND NUT SOLD SEPARATELY.

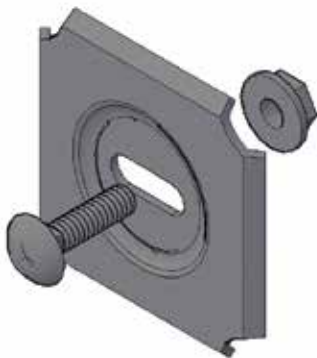
1/4" BOLT & NUT



PART NUMBER	DESCRIPTION	WT. per box	QUANTITY per box
1/4 BOLT & NUT	1/4" Carriage Bolt & Finned Nut used with Washer Support.	1.6 lbs	50 each

STANDARD FINISH: ZINC PLATED | AVAILABLE IN FINISHES: **BL**

WASHER SUPT PLUS



PART NUMBER	DESCRIPTION	WT. per box	QUANTITY per box
WASHER SUPT PLUS	1/4" Bolt & Nut & Washer Support. Used as a hold down method.	6.6 lbs	50 each

STANDARD FINISH: ZINC PLATED | AVAILABLE IN FINISHES: **BL**