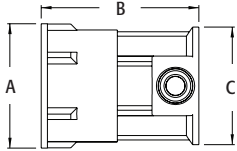


Zinc Combination Couplings EMT to Rigid

EMT set-screw to screw-in rigid metal conduit. Zinc die-cast.



2400

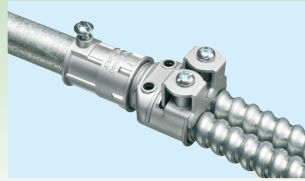


CATALOG NUMBER	UPC/DCI/NAED MFG #018997	TRADE SIZE	UNIT PKG	STD PKG	DIM A	DIM B	DIM C
2400	06920	1/2" EMT to 1/2" female threaded	50	50	1.000	1.267	.946
2410	06921	3/4" EMT to 1/2" female threaded	50	50	1.000	1.412	1.200
2411	06922	3/4" EMT to 3/4" female threaded	50	50	1.210	1.475	1.200

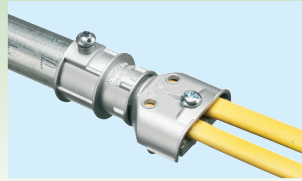
Use with any listed fitting.



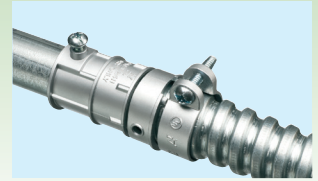
INSTALLATION SHOTS



1/2" EMT to 2400 to SG3838 with flexible metal conduit



3/4" EMT to 2410 to 846 with NM cable



3/4" EMT to 2411 to L422 with flexible metal conduit