

CAT5e 90° & 180° UTP Keystone Jacks

The CAT5e 90° and 180° UTP keystone jacks fit in standard wall plates and provide easy high-speed data access.

Available in either 90 and 180 degree configurations, these UTP keystones are UL-Listed and offer dual 568A/B wiring labels for easy installation.

Pairing them with SOHO Pro wall plates in 1-4 port configurations offers versatile installation options.

Features & Benefits

- Available in 90° or 180° configurations
- Dual 568A/B wiring label
- 110 Universal IDC
- Includes dust cover for protection of socket from dust
- Pairs with Primex wall plates in 1-4 port configurations
- UL/cUL listed
- Applicable specifications:
ANSI/TIA/EIA-568-C.2-1, ISO/IEC 11801 2nd edition: 2002, EN50173-1: 2002, FCC Part 68

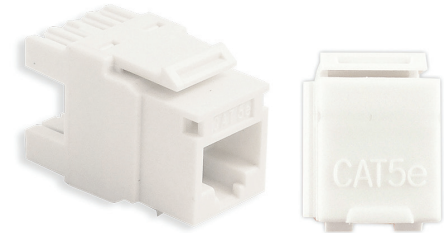
Dimensions

Cat5e 90°: H 1.33" / W 0.57" / D 0.63"

Cat5e 180°: H 1.21" / W 0.57" / D 0.63"

Ordering Information

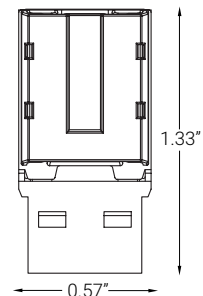
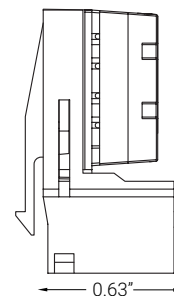
P/N	Model	Description
125-0949-WT	JCat5E-90	110 IDC, 90° HD (White)
125-0949-BL	JCat5E-90-BL	110 IDC, 90° HD (Blue)
125-0948-WT	JCat5e-180-WT	110 IDC, 180° HD (White)
125-0948-BL	JCat5e-180-BL	110 IDC, 180° HD (Blue)



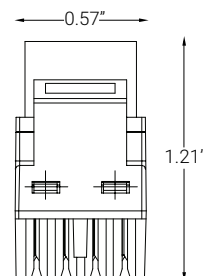
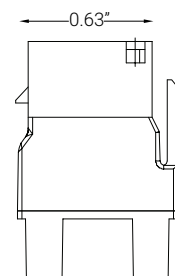
Cat5e 180° Keystone



Pairs with standard Keystone



Cat5e 90° Keystone



Cat5e 180° Keystone

