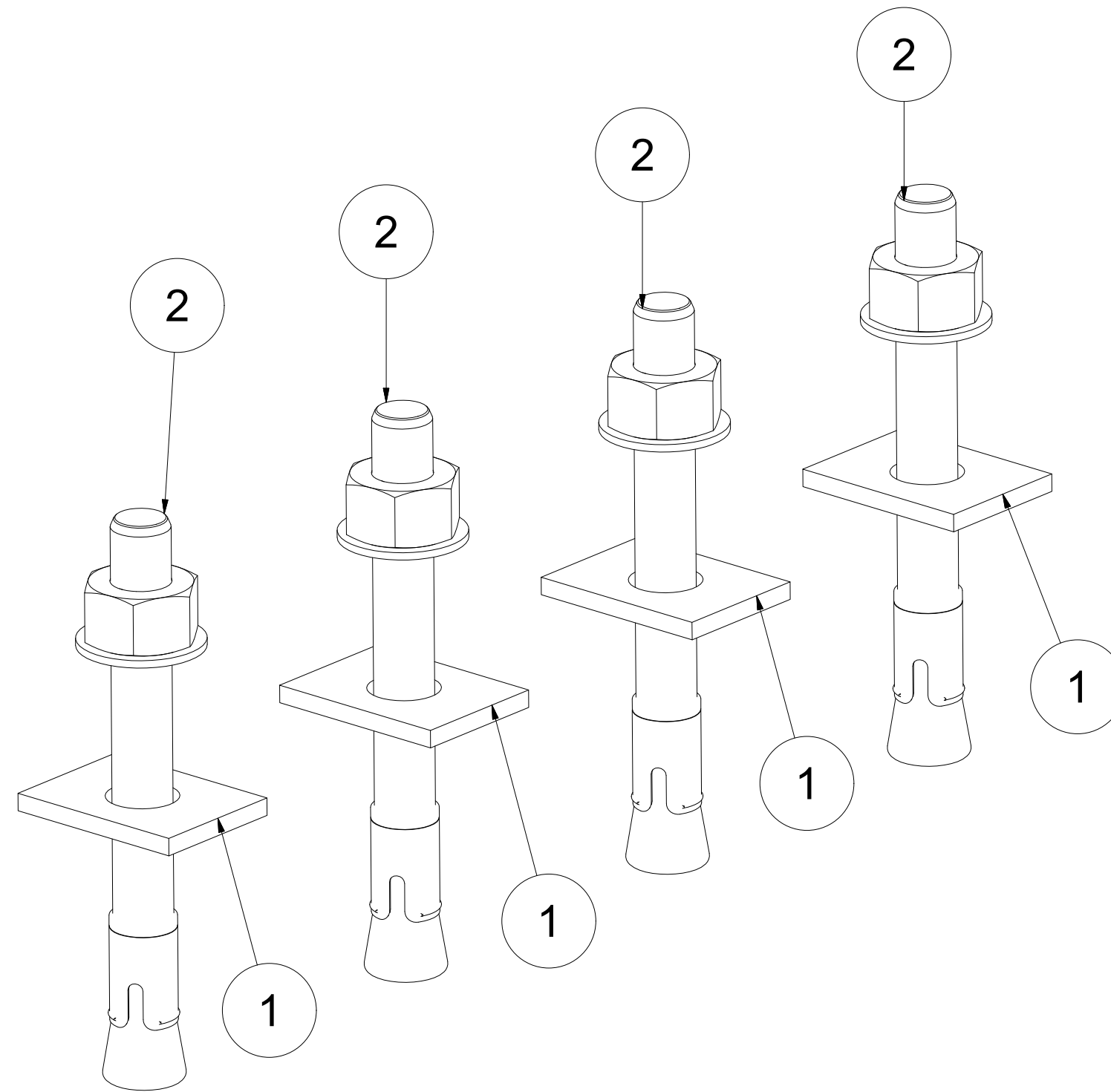
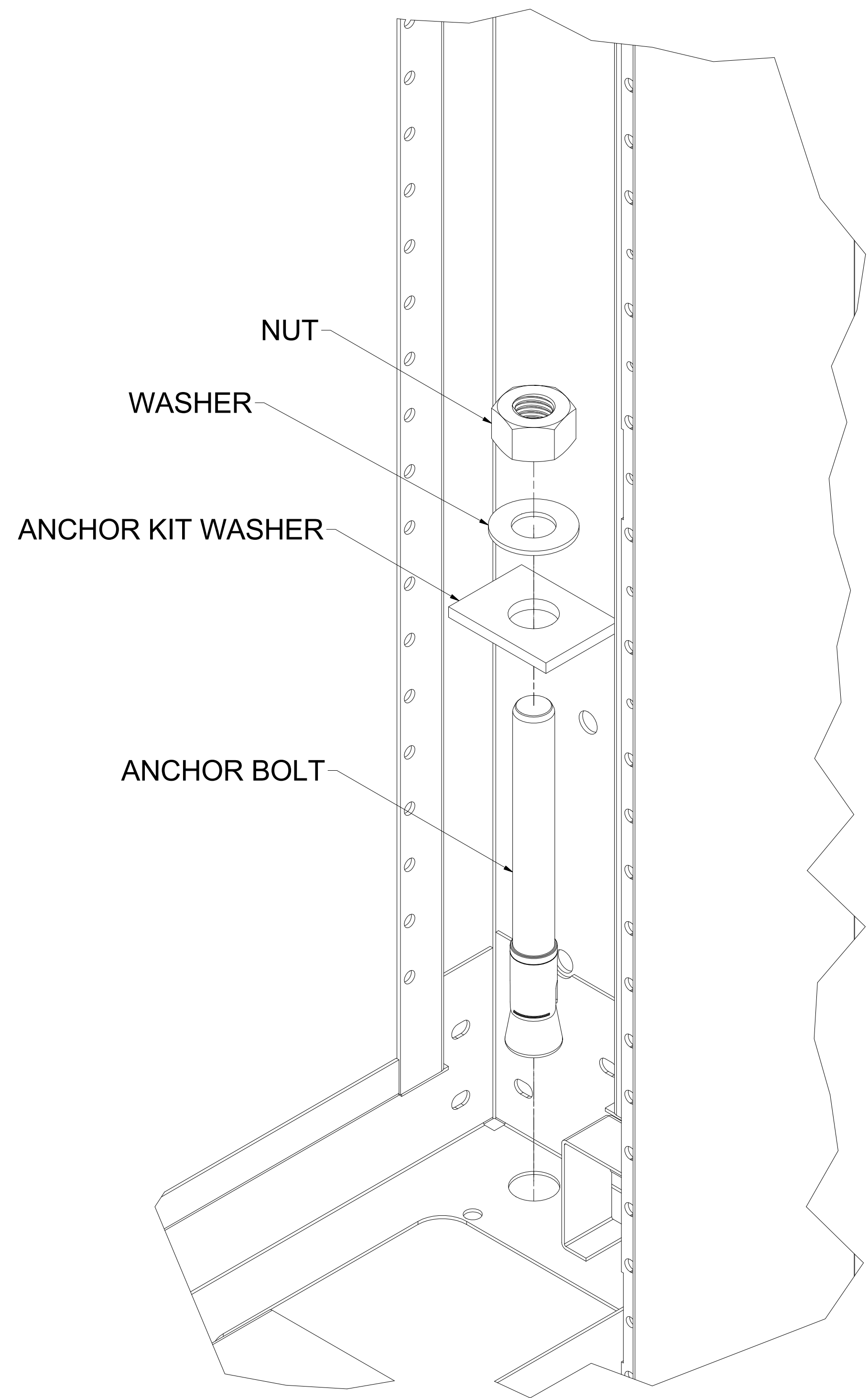


REVISION HISTORY			
REV	DESCRIPTION	DATE	APPROVED
0	ECO-03570	10/26/2012	CDM
1	ECO-06637	7/23/2015	DJH

Bill of Material						
ITEM	PART NUMBER	STOCK NUMBER	QTY	DESCRIPTION	FILE NAME	REV
1	AK101X100		4	ANCHOR KIT WASHER	I017465.ipt	0
2			4	SEISMIC ANCHOR BOLT (AK101) HILTI # 387517	AK101.iam	
3			1	INSTALLATION INSTRUCTIONS: FORM # TD-09-124	-	-

SPECIAL NOTES:
1) PLACE ALL ITEMS IN A BAG BEFORE SHIPPING



DESCRIPTION:
ESPECIALLY SUITED FOR SEISMIC AND CRACKED CONCRETE (TENSION ZONE) APPLICATIONS. SEISMIC QUALIFICATIONS TESTED IN ACCORDANCE WITH ACI 355.2 AND ICC-ES AC 193. SMALL MINIMUM EDGE DISTANCE AND SPACING FOR MAXIMUM DESIGN FLEXIBILITY. SUITABLE FOR CONCRETE OVER METAL DECK APPLICATIONS. ROUNDED END FOR EASY INSTALLATION. MEETS DUCTILITY REQUIREMENTS OF 318 D.3.3.

TECHNICAL DATA:
BASE MATERIAL
CRACKED AND UNCRACKED CONCRETE.
LIGHTWEIGHT CONCRETE.
LIGHT TO MEDIUM WEIGHT CONCRETE OVER METAL DECK ANCHOR MATERIAL.
CARBON STEEL, ELECTROPLATED ZINC 5 MICRONS LISTING / APPROVALS.
ICC-ES (INTERNATIONAL CODE COUNCIL) ESR01917.
FM (FACTORY MUTUAL).
UL (UNDERWRITERS LABORATORIES).
QUALIFIED UNDER AN NQA-1 NUCLEAR QUALITY PROGRAM..

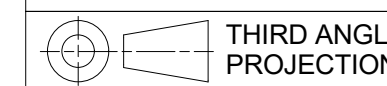
INTERNATIONAL BUILDING CODES:
2003 IBC COMPLIANT ANCHOR
2006 IBC COMPLIANT ANCHOR

ANCHOR SPECS:
HOLE DIAMETER: 5/8"
ANCHOR LENGTH: 6"
THREAD LENGTH: 2 3/4"
EMBEDDED DEPTH: 4 1/2"
THREAD SIZE: 5/8"

TOOL REQUIREMENTS:
DRILL
5/8" DRILL BIT

DETAIL EXPLODED INSTALLATION VIEW
(SOME FRAME PARTS REMOVED FOR CLARITY)
"E" AND "ES" SERIES ENCLOSURES

EST. WEIGHT :
N/A



INTERPRET DRAWING PER ASME Y14.5M-1994
DIMENSIONAL LIMITS APPLY
AFTER APPLICATION OF FINISH
DRAWING NOT TO SCALE
TOLERANCE UNLESS OTHERWISE NOTED:
ANGULAR +/- 1'
.XXXX +/- .010
.XXX +/- .015
.XX +/- .030
.X FOR REF. ONLY
UNLESS OTHERWISE SPECIFIED
ALL DIMENSIONS ARE IN INCHES

NOTICE:
Use of this document is subject to a confidentiality and nondisclosure agreement with Great Lakes Case & Cabinet Co., Inc. (GLCC) and may not be reproduced, disclosed or utilized in whole or in part without prior written authorization from GLCC.

PART NUMBER:
AK101X200
QTY PER UNIT: 1
MATERIAL TYPE:
SEE DETAILS
MATERIAL GAUGE:
SEE DETAILS
FINISH:
NONE
DRAWN
ChrisM
CHECKED & APP.
WSS
DATE
10/26/2012
DATE
10/29/2012

TITLE
SEISMIC ANCHOR KIT
GREAT LAKES CASE & CABINET CO., INC.
P.O. BOX 551 EDINBORO, PA 16412
PHONE (814) 734-7303 FAX (814) 734-3907
E-MAIL glcc@greatcabinets.com
DWG NO:
1017464
REV
1
SHEET: 1 OF 1