



## Description

Mircom's 4, 6, and 8 door card access systems are the most price efficient solutions for new or retrofit installations. The 4 and 6 door controllers provide the flexibility of extending it up to 8 doors. Mircom's card access systems are powerful hybrid IP and RS-485 networked systems that can manage up to 126 doors using RS-485. The system comes with an IP module which can be used to connect up to 63 RS-485 connected panels to the IP network.

**TX3-CX-4-A (4 door card access system – provision to add two additional 2 door controller boards)**

**TX3-CX-6-A (6 door card access system – provision to add one additional 2 door controller boards)**

**TX3-CX-8-A (8 door card access system)**

**TX3-CX-4K-A (4 door card access system – provision to add two additional 2 door controller boards, comes with 4 readers)**

**TX3-CX-6K-A (6 door card access system – provision to add one additional 2 door controller boards, comes with 6 readers)**

**TX3-CX-8-A (8 door card access system, , comes with 8 readers)**

Mircom's 4, 6, and 8 door card access systems are a combination of the UL listed 8 door controller chassis (TX3-BBCX-4W) and the 2 door controller boards (RB-MD-1093). The systems come with their own transformer and IP module. The 8 door controller chassis can house up to four 2 door controller boards. The 4 and 6 door card access systems come with respectively two and three 2 door controller boards leaving flexibility to add two or one more 2 door controller board to expand your system. The 8 door card access system comes with four 2 door controller boards. Four optional batteries, either 5 or 7 AH can be housed within the same chassis to save space.

The 2 door controller boards are compatible with most Wiegand readers. Due to the flexibility of being compatible with so many different types of readers the TX3 card access systems can conveniently be used to retrofit keeping your existing credentials and/or readers. The 2 door controller boards are also compatible with wireless Wiegand receivers to give you the capabilities of using the card access system as a garage door operation. TX3 series card access systems have a unique feature of being natively integrated to the entire TX3 family including voice entry, elevator restriction and wireless Aperio locksets. All TX3 series systems come with the intuitive configuration and monitoring tool. The configurator is free to download and update from Mircom website.

## Features/Benefits

- A hybrid architecture that combines the best of TCP/ IP and RS-485. All panels can be networked via RS-485 or TCP/IP
  - The system comes with an IP module for easy to access local or remote programming
- 8 supervised inputs for a wide selection of monitoring points to be shared between the two card readers
- Each 2 door controller board can provide up to 8 programmable outputs; 6 are Form C contacts (normally open/normally closed), two powered outputs provide 12 VDC power for up to 1 amperes of current combined
  - The number of inputs and outputs multiply as more 2 door controller boards are added
  - Providing up to 32 supervised inputs + 32 programmable outputs where 24 of them are form C relay and 8 of them are powered (when using four 2 door controller boards/8 door card access system)
- The Wiegand inputs support multiple different reader types such as Proximity, MIFARE, Biometrics, iClass, and BLE (ordered separately)
- Supports all credential formats such as clamshell cards, graphic cards, key tags and wafers (ordered separately)
- Optional vehicular control using dual technology wireless transmitters that can have a built-in proximity coil (wafer)
- Same job file for both TX3 voice entry and card access systems reduces administration time and support
- A variety of options to remotely manage the TX3 access panel to fit the site requirements. A modem, a TCP/IP module or use a local USB extender to a PC
- Controls up to eight doors from one enclosure simplifying conduit connections and cabling
- Cost saving construction of multiple TX3 Series RB-MD-1093 two door controller boards
- Small cabinet size for up to eight doors for installations with limited wall space
- Flexible configuration to accommodate from two to eight doors

## High level features include:

### High Security

- A convenient feature enabling the user to perform emergency lock down' or 'emergency evacuation' by swiping an ID card four times in front of a reader to lock or unlock all doors.

### First Person In

- This feature causes the door to remain locked at the start of the unlock schedule, until the first valid card with this privilege is presented to the card reader. The door continues to remain unlocked for the remainder of the unlock schedule.

### Deduct Usage Counter

- For cards designated as "temporary", this option decreases the usage counter by one every time this card is used at the access point. When the usage counter reaches zero, the card deactivates.

### Soft Anti-Pass Back

- This function prevents the buddy system by requiring the user to use an exit reader before using an entry reader up to 900 seconds.

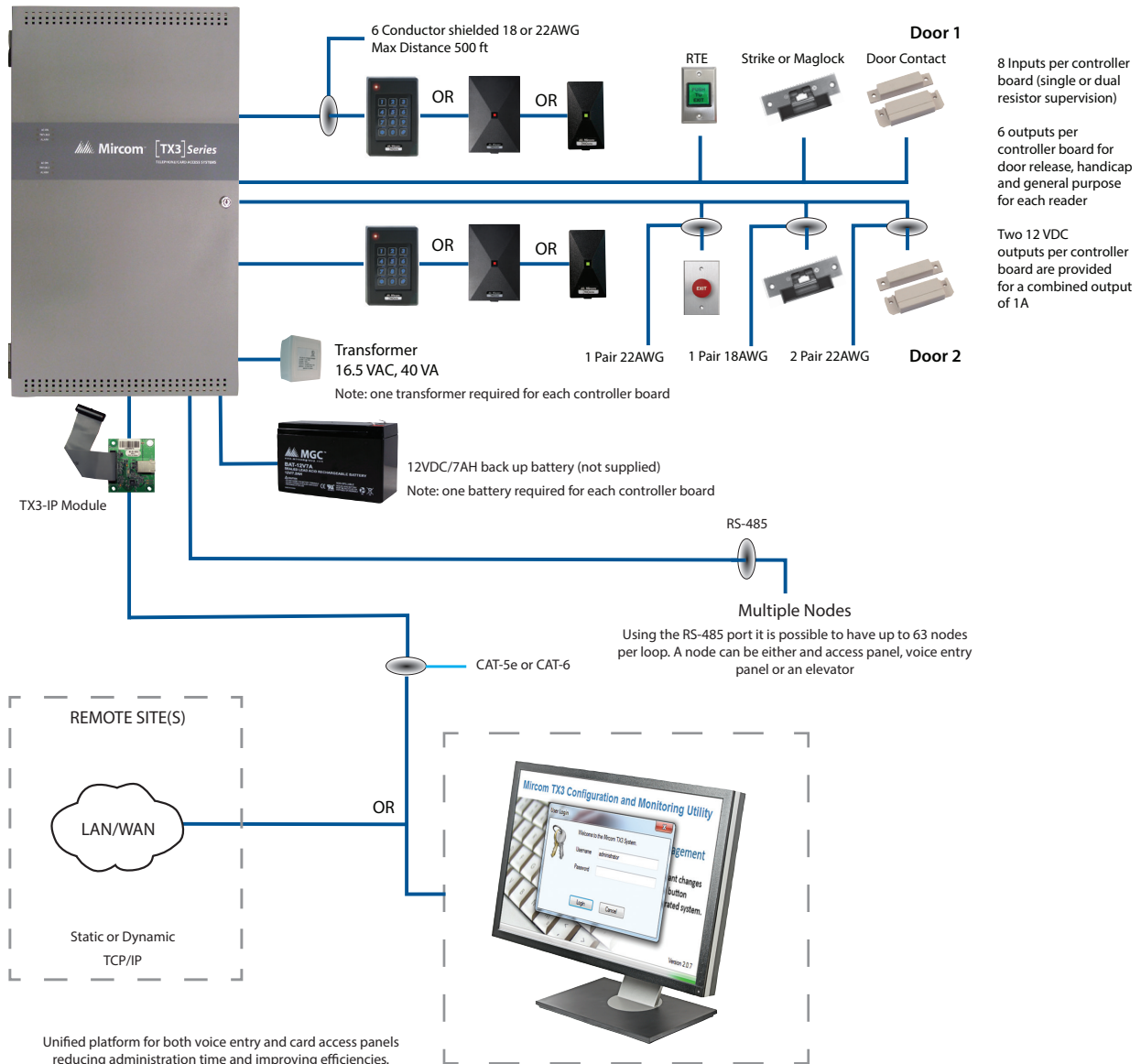
### Mantrap/Interlocking Doors

- This feature monitors and controls access to a high value or critical security area by ensuring one door is locked before opening the second door.

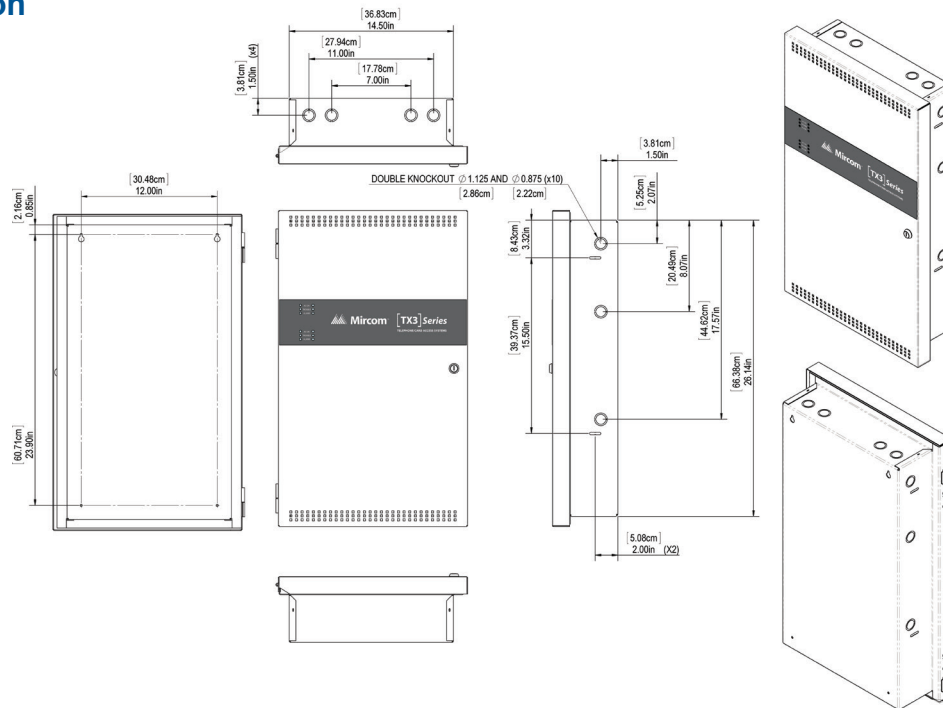
### Compatibility

- Compatible to any Wiegand reader technology including Mifare, biometric, proximity and iClass.
- Elevator Control for up to 96 floors to restrict users to specific floors.

## TX3 Card Access System Wiring



## Specification



<b>Size</b>	16.7" x 27.9" (42.42 cm x 70.87 cm)
<b>Knock-out Dimensions</b>	0.875" (2.22 cm) and 1.25" (3.18 cm) diameter
<b>Battery Back-up</b>	Five or seven ampere hour battery. (Not included.)
<b>Power</b>	16 VAC for each 2 door controller board (Separate transformer included.)
<b>Optional Power Supply</b>	Single optional power supply available, 24 VDC, can power up to four 2 door controller boards
<b>Optional Power Supply</b>	Dimension: 9.75" length x 7.5" width x 2" depth (24.77 cm x 19.05 cm x 5.08 cm)

## Ordering Information

Model	Description
TX3-CX-4-A	4 Door Access Control System c/w two TX3-CX-2-A Door Controller (leaving space to add two additional 2 door controller boards), transformers, 1 IP module, Configurator software and a USB cable. For Battery Back-up, add two 12 VDC battery, 5 Ah or 7 Ah. <b>UL Listed</b>
TX3-CX-6-A	6 Door Access Control System c/w three TX3-CX-2-A Door Controller (leaving space to add one additional 2 door controller board), transformers, 1 IP module, Configurator software and a USB cable. For Battery Back-up, add three 12 VDC battery, 5 Ah or 7 Ah. <b>UL Listed</b>
TX3-CX-8-A	8 Door Access Control System c/w four TX3-CX-2-A Door Controller, transformers, 1 IP module, Configurator software and a USB cable. For Battery Back-up, add four 12 VDC battery, 5 Ah or 7 Ah. <b>UL Listed</b>
TX3-CX-4K-A	4 Door Access Control System Kit c/w two TX3-CX-2-A Door Controller (leaving space to add two additional 2 door controller boards), four proximity card readers (TX3-P300-HA), transformers, 1 IP module, four graphic cards, Configurator software and a USB cable. For Battery Back-up, add two 12 VDC battery, 5 Ah or 7 Ah.
TX3-CX-6K-A	6 Door Access Control System Kit c/w three TX3-CX-2-A Door Controller (leaving space to add one additional 2 door controller board), six proximity card readers (TX3-P300-HA), transformers, 1 IP module, six graphic cards, Configurator software and a USB cable. For Battery Back-up, add three 12 VDC battery, 5 Ah or 7 Ah.
TX3-CX-8K-A	8 Door Access Control System Kit c/w four TX3-CX-2-A Door Controller, eight proximity card readers (TX3-P300-HA), transformers, 1 IP module, eight graphic cards, Configurator software and a USB cable. For Battery Back-up, add two 12 VDC battery, 5 Ah or 7 Ah.
RB-MD-1093	2 door controller replacement board, order this to extend the card access system (one 8 door controller chassis can house up to four 2 door controller boards)

## Ordering Information cont'd

Proximity Readers	
SR-2400-GR-MP	Mullion Mount Reader, 125 KHz, 5 to 12 VDC. Dimensions: 4.5 x 1.8 x 0.70 inch (11.4 x 4.5 x 1.8 cm)
TX3-P500-HA	Single Gang Mount Reader, Grey, 125 KHz, 5 to 16 VDC. Dimensions: 4.6 x 3.1 x 0.36 inch (11.7 x 7.7 x 0.9 cm)
TX3-P300-HA	Mini Mullion mount, 125 KHz, 5 to 16 VDC, Dimensions: 3.2 x 1.7 x 0.7 inch (8.0 x 4.3 x 1.7 cm)
TX3-P640-H-A	Keypad with Proximity Reader, Single gang mount, 5 to 16 VDC. Dimensions: 4.6 x 3.0 x 0.4 inch (11.7 x 7.7 x 1.0 cm)
TX3-DELTA5	Single Gang mount, 13.56MHz, 5 to 14 VDC. Dimensions: 4.6 x 3 x 0.4 inch (11.7 x 7.6 x 1.0 cm)
TX3-DELTA6-KP	Keypad with Contactless Reader, Single Gang mount, 13.56MHz, 5 to 14 VDC. Dimensions: 4.6 x 3 x 0.75 inch (11.7 x 7.6 x 1.9 cm)
39201237	A solid aluminum, tamper resistant, single gang mount keypad, IP68 rated with audible/visual feedback. Operating Temperature: 32°F to 257 °F (-40°C to 125°C)
TX3-WRR-22	Dual Channel Receiver for use with TX3-WRT-2H
TX3-WRR-44	Wiegand Receiver for use with TX3-WRT-4H four button transmitters.
Credentials	
CS-MIR-0-0	Clam Shell Proximity card with slot for portrait orientation strap. Accepts photo ID overlay. Packaged in quantities of 25 pieces
GR-MIR-H-26	Graphics Card for printing on both sides. Provision for portrait or landscape card slot punching. HID proximity compatible. Available in 26-bit format GR-MIR-H-26 & Mircom format GR-MIR-H-37. Packaged in quantities of 50 pieces.
GR-MIR-H-37	Graphics Card for printing on both sides. Provision for portrait or landscape card slot punching. HID proximity compatible. Available in 26-bit format GR-MIR-H-26 & Mircom format GR-MIR-H-37. Packaged in quantities of 50 pieces.
TX3-PDT-H-37	Adhesive proximity disc tag, HID supported, 125 KHz, Mircom format
PW-MIR-0-0	Proximity Wafer with adhesive backing. One-inch (2.54 cm) diameter. Packaged in quantities of 10 pieces
KT-MIR-0-0	Key tag for key ring. Durable ABS plastic case to withstand years of abuse. Packaged in quantities of 10 pieces
TX3-DM1-3	13.56MHz MIFARE contactless Smartcard with 1K memory. Packaged in quantities of 25 pieces
TX3-DK1-3	Key fob for Smartcard, 13.56 MHz MIFARE, with 1K memory. Durable ABS plastic case to withstand years of abuse. Packaged in quantities of 10 pieces
TX3-WRT-2H	Two Button transmitter with HID supported proximity tag
TX3-WRT-4H	Four Button transmitter with HID supported proximity tag
TX3-WRT-2M	Mini 2-button transmitter, no proximity insert, standard hole for an adhesive tag insert
Accessories	
TX3-IP	Add-on TCP/IP Module fits on top of the TX3-CX-2K-A or TX3-CX-2-A motherboard
TX3-MDM	Modem module mounts onto control panel board
TX3-DATA-MDM	Modem USB 2.0 stick, one required per PC. Compliant with V.92, V.90 and V.44
TX3-USB-AD	USB to RS-485 Adaptor kit includes an MD-993 module and mounting hardware
Batteries	
BAT-12V5A	Battery, 12 VDC, 5 AH, one required per TX3-CX Control panel
BAT-12V7A	Battery, 12 VDC, 7.2 AH, one required per TX3-CX Control panel



**Canada**  
 25 Interchange Way  
 Vaughan, Ontario L4K 5W3  
 Telephone: (905) 660-4655  
 Fax: (905) 660-4113

**U.S.A.**  
 4575 Witmer Industrial Estates  
 Niagara Falls, NY 14305  
 Toll Free: (888) 660-4655  
 Fax Toll Free: (888) 660-4113



**THIS INFORMATION IS FOR MARKETING PURPOSES ONLY AND NOT INTENDED TO DESCRIBE THE PRODUCTS TECHNICALLY.**

For complete and accurate technical information relating to performance, installation, testing and certification, refer to technical literature. This document contains intellectual property of Mircom. The information is subject to change by Mircom without notice. Mircom does not represent or warrant correctness or completeness.