

PRODUCT GUIDE

Landscape & Architectural Lighting



ACCENT LIGHTS

◀ MP

Height: 6.6" (168 mm)
Diameter: 1.8" (45 mm)
Lamp: MR-11 LED
Finish: BZ, DG, WI, SB, FB, FW[†], SV[†]
Material: Zinc/Aluminum



◀ RS

Height: 6.6" (168 mm) / L Shroud: 7.8" (198 mm)
Diameter: 2.4" (61 mm)
Lamp: MR-16 LED
Finish: BZ, DG, WI, SB, FB
Material: Zinc/Aluminum



◀ MU

Height: 7.2" (183 mm) / L Shroud: 8.7" (221 mm)
Diameter: 2.2" (56 mm)
Lamp: MR-16 LED
Finish: BZ, DG, WI, SB, FB, FW[†], SV[†]
Material: Aluminum

◀ QZ

Height: 5.75" (146 mm)
Diameter: 1.8" (45 mm)
LED: 1
Finish: BZ, DG, WI, SB, FB, FW[†], SV[†]
Material: Aluminum



◀ FB

Height: 8.1" (206 mm)
Diameter: 2.5" (64 mm)
LED: 1, 3
Finish: BZ, DG, WI, SB, FB, FW[†], SV[†]
Material: Aluminum



◀ NP + color

Height: 8.4" (213 mm) / L Shroud: 10.4" (264 mm)
Diameter: 2.7" (69 mm)
LED: 3, 6, 9
Finish: BZ, DG, WI, SB, FB, FW[†], SV[†]
Material: Aluminum

◀ XA-70 + color

Height: 11.2" (285 mm)
Diameter: 3.3" (84 mm)
LED: H1
Finish: BZ, DG, WI, SB, FB, FW[†], SV[†]
Material: Aluminum



◀ C-UL

Height: 6.5" (165 mm)
Diameter: 2.4" (61 mm)
Lamp: MR-16 LED
Finish: AB
Material: Select Brass



◀ CA-51

Height: 7.9" (200 mm)
Diameter: 2.2" (56 mm)
Lamp: MR-16 LED
Finish: AB
Material: Select Brass

◀ PA-36 + color

Height: 7.5" (190 mm)
Diameter: 1.6" (41 mm)
LED: 1, 3
Finish: AB, AT, BS, BZ, DG, WI, SB, FB, FW[†], SV[†]
Material: Brass



◀ CC + color

Height: 6.3" (160 mm) / L Shroud: 7.2" (183 mm)
Diameter: 1.6" (41 mm)
LED: 1, 3
Finish: AB, AT, BS, NP[†]
Material: Brass



◀ VS + color

Height: 7.5" (191 mm) / L Shroud: 8.2" (208 mm)
Diameter: 2.5" (64 mm)
LED: 3, 6, 9
Finish: AB, AT, BS, NP[†]
Material: Brass

◀ MR

Height: 7.0" (178 mm) / L Shroud: 8.5" (216 mm)
Diameter: 2.0" (51 mm)
Lamp: MR-11 LED
Finish: CU, NP[†]
Material: Copper/Brass



◀ LR

Height: 7.7" (195 mm) / L Shroud: 9.0" (228 mm)
Diameter: 2.5" (64 mm)
Lamp: MR-16 LED
Finish: CU, NP[†]
Material: Copper/Brass



◀ LO

Height: 6.4" (163 mm) / L Shroud: 9.2" (234 mm)
Diameter: 2.3" (57 mm)
Lamp: MR-16 LED
Finish: BS, NP[†]
Material: Brass

◀ FR + color

Height: 6.1" (155 mm) / L Shroud: 7.0" (178 mm)
Diameter: 2.0" (50 mm)
LED: 1, 3
Finish: CU, AB, AT, NP[†]
Material: Copper/Brass



◀ NR + color

Height: 6.1" (155 mm) / L Shroud: 7.4" (188 mm)
Diameter: 2.5" (64 mm)
LED: 3, 6, 9
Finish: CU, AB, AT, NP[†]
Material: Copper/Brass



◀ EA-51

Height: 7.0" (178 mm)
Diameter: 2.6" (67 mm)
Lamp: MR-16 LED
Finish: BC
Material: Composite

WALL WASHES

◀ WS



Height: 6.4" (163 mm)
Width: 4.0" (102 mm)
Lamp: G4 LED
Finish: BZ, DG, WI, SB, FB
Material: Aluminum

◀ CW-31



Height: 5.4" (137 mm)
Width: 4.2" (107 mm)
Depth: 2.7" (69 mm)
Lamp: G4 LED
Finish: AB
Material: Select Brass

◀ CW-51



Height: 6.2" (158 mm)
Width: 4.4" (112 mm)
Depth: 3.5" (89 mm)
Lamp: MR-16 LED
Finish: AB
Material: Select Brass

◀ QB/VW-31



Height: 5.0" (127 mm)/
 6.0" (152 mm)
Width: 2.9" (75 mm)/
 3.0" (75 mm)
Depth: 2.2" (55 mm)
LED: 1/MR-11 LED Lamp
Finish: BZ, DG, WI, SB, FB, FW[‡], SV[‡]
Material: Aluminum

◀ PB + color



Height: 6.0" (152 mm)
Width: 3.9" (98 mm)
Depth: 2.2" (56 mm)
LED: 1, 3
Finish: AB, AT, BS, NP[‡], BZ, DG, WI, SB, FB, FW[‡], SV[‡]
Material: Brass or Aluminum

◀ LC + color



Height: 6.5" (165 mm)
Width: 4.5" (114 mm)
Depth: 3.0" (76 mm)
LED: 3, 6, 9
Finish: AB, AT, BS, NP[‡], BZ, DG, WI, SB, FB, FW[‡], SV[‡]
Material: Brass or Aluminum

◀ XW-70 + color



Height: 8.3" (211 mm)
Width: 6.0" (152 mm)
Depth: 3.5" (89 mm)
LED: H1
Finish: BZ, DG, WI, SB, FB, SV[‡], FW[‡], SV[‡]
Material: Aluminum

◀ EW-31



Height: 6.0" (153 mm)
Width: 4.6" (117 mm)
Depth: 3.2" (82 mm)
Lamp: G4 LED
Finish: BC
Material: Composite

◀ RW + color



Height: 7.6" (193 mm)
Diameter: 4.1" (103 mm)
LED: 3, 6, 9
Finish: BZ, DG, WI, SB, FB, SV[‡], FW[‡], SV[‡]
Material: Aluminum

◀ RL



Height: 6.0" (153 mm)
Diameter: 4.0" (102 mm)
Lamp: G4 LED
Finish: CU,
Material: Copper/Brass

PATH AND AREA LIGHTS

◀ DP



Height: 13.5" (343 mm)*
Diameter: 2.9" (74 mm)
Lamp: G4 LED
Finish: CU, NP[‡], BZ, DG, WI, SB, FB, FW[‡]
Material: Copper/Brass

◀ EP-31



Height: 15.2" (386 mm)*
Diameter: 4.8" (122 mm)
Lamp: G4 LED
Finish: BC
Material: Composite

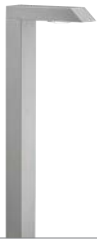
◀ TM/PL + color



Height: TM: 15.0" (381 mm)*
 PL: 15.6" (396 mm)
Diameter: TM: 5.0" (127 mm)
 PL: 6.0" (152 mm)
LED: 1*, 3*, or G4 LED Lamp
Finish: BZ, DG, WI, SB, FB, FW[‡], SV[‡]
Material: Aluminum

* When specified with a 12" (300 mm) riser
 ‡ Items in this finish are not returnable.

PATH AND AREA LIGHTS



◀ MP-30/31 + color

Height: 20.2" (511 mm)
Width: 1.5" (38 mm)
Depth: 7.4" (194 mm)
LED: 1 or G4 LED Lamp
Finish: BZ, DG, WI, SB, FB, FW[‡], SV[‡]
Material: Aluminum



◀ MP-40 + color

Height: 21.3" (541 mm)
Width: 2.2" (55 mm)
Depth: 7.4" (188 mm)
LED: 1
Finish: BZ, DG, WI, SB, FB, FW[‡], SV[‡]
Material: Aluminum



◀ MP-J + color

Height: 22.1" (561 mm)
Width: 2.8" (71 mm)
Depth: 7.4" (187 mm)
LED: 1, 3, 6
Finish: BZ, DG, WI, SB, FB, FW[‡], SV[‡]
Material: Aluminum



◀ MP-K + color

Height: 22.5" (572 mm)
Width: 2.2" (56 mm)
Depth: 7.4" (187 mm)
LED: 1, 3
Finish: BZ, DG, WI, SB, FB, FW[‡], SV[‡]
Material: Aluminum



◀ MP-Z + color

Height: 22.1" (561 mm)
Width: 2.5" (64 mm)
Depth: 7.4" (187 mm)
LED: 1, 3
Finish: BZ, DG, WI, SB, FB, FW[‡], SV[‡]
Material: Aluminum



◀ RP-32/33 + color

Height: 20.1" (511 mm)
Width: 1.5" (38 mm)
Depth: 7.2" (182 mm)
LED: 1 or G4 LED Lamp
Finish: BZ, DG, WI, SB, FB, FW[‡], SV[‡]
Material: Aluminum



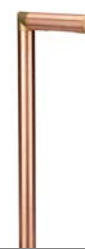
◀ PM + color

Height: 14.0" (356 mm)
XT: 18.5" (470 mm)
Diameter: 2.5" (64 mm)
LED: 1, 3, 6, 9, or MR-16 LED Lamp
Finish: BZ, DG, WI, SB, FB, SV[‡], FW[‡]
Material: Aluminum



◀ PP-36 + color

Height: 20.7" (526 mm)
Depth: 7.5" (191 mm)
LED: 1, 3
Finish: BS, BZ, DG, WI, SB, FB, SV[‡], FW[‡], AB, AT
Material: Copper/Brass



◀ RP-34/35 + color

Height: 21.9" (556 mm)
Width: 1.4" (36 mm)
Depth: 7.9" (201 mm)
LED: 1 or G4 LED Lamp
Finish: CU, BZ, DG, WI, SB, FB, FW[‡], SV[‡], AB, AT
Material: Copper/Brass



◀ HC/SP/JS/DL (-A) + color

Height: 15.6" (396 mm)*
Diameter:
 SP: 3.6" (92 mm)
 DL: 6.3" (159 mm)
LED: 1*, 3*, or G4 LED Lamp
Finish: AB, AT, CU, NP[‡], BZ, DG, WI, SB, FB, FW[‡], SV[‡]
Material: Copper/Brass or Aluminum



◀ SC/CA (-A) + color

Height: 15.4" (391 mm)*
Diameter:
 SC: 4.7" (119 mm)
 CA: 7.6" (193 mm)
LED: 1*, 3*, or G4 LED Lamp
Finish: CU, NP[‡], BZ, DG, WI, SB, FB, FW[‡], SV[‡]
Material: Copper/Brass or Aluminum



◀ PF/DM (-A) + color

Height: 15.5" (394 mm)*
Diameter:
 PF: 4.0" (102 mm)
 DM: 7.1" (180 mm)
LED: 1*, 3*, or G4 LED Lamp
Finish: CU, NP[‡], BZ, DG, WI, SB, FB, FW[‡], SV[‡]
Material: Copper/Brass or Aluminum



◀ CP-L4/CP-L7

Height: 21.5" (546 mm)
Diameter:
 CP-L4: 4.3" (109 mm)
 CP-L7: 6.5" (165 mm)
Riser Diameter: 1.0" (25 mm)
LED: 1, 3, or G4 LED Lamp
Finish: AB
Material: Select Brass



◀ GN

Height: 22.1" (563 mm) with 18" (450 mm) riser
Diameter: 10.0" (254 mm)
Riser Diameter: 1.25" (38 mm)
Lamp: G4 LED
Finish: CU
Material: Copper/Brass



◀ DS/DR

Height: 7.6" (193 mm)*
Diameter: 4.1" (103 mm)
LED: 3, 6, 9
Finish: BZ, DG, WI, SB, FB, SV[‡], FW[‡], SV[‡]
Material: Aluminum



◀ FG + color

Height: 18.0" (457 mm)
Diameter: 5.0" (127 mm)
LED: 1, 3, 6, 9, or SCB Lamp
Finish: AB, AT, CU, NP[‡], BZ, DG, WI, SB, FB, FW[‡], SV[‡]
Material: Copper/Brass



◀ TD + color

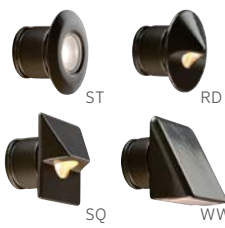
Height: 18.0" (457 mm)
XT: 29.5" (749 mm)
Diameter: 5.0" (127 mm)
LED: 1, 3, 6, 9, or SCB Lamp
Finish: AB, AT, CU, NP[‡], BZ, DG, WI, SB, FB, FW[‡], SV[‡]
Material: Copper/Brass



◀ AL

Height: 27.5" (699 mm)
Diameter: 5.6" (142 mm)
Lamp: SCB Lamp
Finish: BZ, DG, WI, SB, FB, FW[‡], SV[‡]
Material: Aluminum

RECESSED WALL LIGHTS



◀ PO/MO + color

Diameter:
PO: 2.5" (64 mm)
MO: 3.3" (84 mm)
LED: PO: 1, MO: 3
Finish: AB, AT, BS, NP[†],
BZ, DG, WI, SB, FB,
FW[†], SV[†]
Material: Brass



◀ CN-51

Diameter: 3.3" (84 mm)
Lamp: MR-16 LED
Finish: AB
Material: Select Brass



◀ VO

Length: 2.4" (62 mm)
Diameter:
1.9" (48 mm)
LED: 1
Finish: SS
Material:
Stainless Steel



◀ RH + color

Height: 3.0" (76 mm)
Width: 5.0" (127 mm)
LED: 1, 3
Finish: BZ, DG, WI,
SB, FB, FW[†], SV[†]
Material: Aluminum



◀ VK + color

Height: 9.0" (229 mm)
Width: 3.0" (76 mm)
LED: 1, 3
Finish: BZ, DG, WI,
SB, FB, FW[†], SV[†]
Material: Aluminum



◀ SL-3 + color

Height: 4.9" (125 mm)
Width: 3.2" (81 mm)
LED: 1, 3
Finish: BZ, DG, WI,
SB, FB, FW[†], SV[†]
Material: Aluminum



◀ CP/LM

Height: 3.5" (89 mm)
Width:
CP: 5.0" (127 mm)
LM: 9.0" (229 mm)
LED: 1, 2, or G4 LED
Lamp
Finish: AB, AT, CU, NP[†],
BZ, DG, WI, SB, FB,
FW[†], SV[†]
Material: Copper



◀ UN/PD

Height: 3.5" (89 mm)
Width: UN: 5.2" (91 mm)
PD: 9.0" (229 mm)
LED: 1, 2, or G4 LED
Lamp
Finish: AB, AT, BS, NP[†],
BZ, DG, WI, SB, FB, CB,
DT, FW[†], SV[†]
Material: Brass or
Composite



◀ SL-5 + color

Height: 4.1" (101 mm)
Width: 5.4" (137 mm)
LED: 1, 3
Finish: BZ, DG, WI,
SB, FB, FW[†], SV[†]
Material: Aluminum



◀ HS + color

Height: 2.3" (58 mm)
Width: 8.0" (203 mm)
Face Depth: 0.9"
(23 mm)
LED: 2
Finish: BZ, DG, WI,
SB, FB, FW[†], SV[†]
Material: Aluminum

SURFACE-MOUNTED WALL LIGHTS



◀ SF + color

Height: 2.5" (64 mm)
Width: 6.8" (172 mm)
Exposed Depth: 1.0"
(25 mm)
LED: 1
Finish: BZ, DG, WI,
SB, FB, FW[†], SV[†]
Material: Aluminum



◀ MM/MS

Diameter: 3.3" (83 mm)/
3.7" (94 mm)
Depth: 1.8" (45 mm)/
2.0" (51 mm)
LED: 1 or G4 LED Lamp
Finish: BS, NP[†], AB, AT,
BS, NP[†], BZ, DG, WI, SB,
FB, FW[†], SV[†]
Material: Brass or
Aluminum

LEDGE LIGHTS

◀ LD



Height: 1.0" (25 mm)
Width: 4.8" (122 mm)
Depth: 0.8" (20 mm)
Lamp: G4 LED
Finish: BZ, DG, WI, SB, FB
Material: Aluminum

◀ CL-L



Height: 0.8" (20 mm)
Width: 6.9" (175 mm)
Depth: 0.8" (20 mm)
LED: Integrated LED
Finish: AB
Material: Select Brass

◀ LF + color



Height: 0.9" (22 mm)
Width: 6.7" (170 mm)
Depth: 1.0" (25 mm)
LED: 1
Finish: AB, AT, BS, CU, SS, BZ, DG, WI, SB, FB, FW[†], SV[†]
Material: Brass or Aluminum

◀ SRP



Length: 10' (3.1 m) or 40' (12 m)
LED: Integrated LED
Material: Silicone



◀ SRP RGBW + color

Length: 10' (3.1 m), 20' (6.1 m)
LED: Integrated LED
Material: Silicone
Accessory Required: SRP-CC



SRP-CC Controller

DIRECTIONAL DOWN LIGHTS

◀ QT



Length: 6.8" (173 mm)
Diameter: 2.1" (53 mm)
LED: 1
Finish: BZ, DG, WI, SB, FB, FW[†], SV[†]
Material: Aluminum



◀ JB + color

Length: 10.4" (264 mm)
Diameter: 2.6" (66 mm)
LED: 1, 3
Finish: BZ, DG, WI, SB, FB, FW[†], SV[†]
Material: Aluminum



◀ DE + color

Length: 11.7" (297 mm)
Diameter: 3.0" (76 mm)
LED: 3, 6, 9
Finish: BZ, DG, WI, SB, FB, FW[†], SV[†]
Material: Aluminum

◀ XA-70 + color

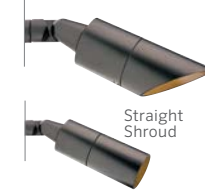


Length: 11.2" (285 mm)
Diameter: 3.3" (84 mm)
LED: H1
Finish: BZ, DG, WI, SB, FB, FW[†], SV[†]
Material: Aluminum



◀ CA-51

Length: 7.9" (200 mm)
Diameter: 2.2" (56 mm)
Lamp: MR-16 LED
Finish: AB
Material: Select Brass



◀ MD

Length: 10.5" (267 mm)
Diameter: 3.0" (76 mm)
Lamp: MR-16 LED
Finish: BZ, DG, WI, SB, FB, FW[†], SV[†]
Material: Aluminum

◀ TS



Length: 6.5" (165 mm)
Diameter: 2.4" (61 mm)
Lamp: AR-11 LED
Finish: CU
Material: Copper



◀ RL

Height: 6.0" (153 mm)
Diameter: 4.0" (102 mm)
Lamp: G4 LED
Finish: CU
Material: Copper/Brass



◀ RW + color

Height: 7.6" (193 mm)
Diameter: 4.1" (103 mm)
LED: 3, 6, 9
Finish: BZ, DG, WI, SB, FB, SV[†], FW[†], SV[†]
Material: Aluminum

◀ PA-36 + color



Height: 7.5" (190 mm)
Diameter: 1.6" (41 mm)
LED: 1, 3
Finish: AB, AT, BS, BZ, DG, WI, SB, FB, FW[†], SV[†]
Material: Brass

All integrated LED fixtures are available with Luxor Technology.
[†] Items in this finish are not returnable.

RECESSED DOWN LIGHTS



◀ VC

Depth: 3.3" (83 mm)
Diameter: 2.4" (62 mm)
LED: 1
Finish: FW
Material: Aluminum



◀ RC + color

Depth: 3.5" (89 mm)
Diameter: 5.5" (140 mm)
LED: 1, 3, 6, 9
Finish: BZ, DG, WI, SB, FB, FW[‡], SV[‡]
Material: Aluminum

SURFACE-MOUNTED DOWN LIGHTS



◀ ZC + color

Height: 5.5" (140 mm)
Diameter: 2.1" (53 mm)
Base Diameter: 4.7" (119 mm)
LED: 1, 3
Finish: CU, SS, BZ, DG, WI, FB, FW[‡], SV[‡]
Material: Aluminum or Copper



◀ PS + color

Height: 3.2" (81 mm)
Diameter: 3.0" (76 mm)
LED: 3, 6, 9
Finish: AB, AT, BS, NP[‡], CU, BZ, DG, WI, SB, FB, FW[‡], SV[‡]
Material: Brass or Aluminum

WALL SCONCES



◀ QL

Height: 2.3" (58 mm)
Width: 1.5" (38 mm)
Depth: 2.2" (56 mm)
LED: 1
Finish: BZ, DG, WI, SB, FB, FW[‡], SV[‡]
Material: Aluminum



◀ NL-DN + color

Height: 3.3" (84 mm)
Width: 3.2" (81 mm)
Depth: 3.4" (86 mm)
LED: 3, 6, 9
Finish: AB, AT, BS, CU, NP[‡], BZ, DG, WI, SB, FB, FW[‡], SV[‡]
Material: Brass or Aluminum



◀ NL-UD + color

Height: 7.3" (185 mm)
Width: 3.2" (81 mm)
Depth: 3.3" (84 mm)
LED: 3, 6, 9
Finish: AB, AT, BS, CU, NP[‡], BZ, DG, WI, SB, FB, FW[‡], SV[‡]
Material: Brass or Aluminum



◀ SD + color

Height: 7.1" (180 mm)
Depth: 4.0" (102 mm)
LED: 3, 6, 9
Finish: BZ, DG, WI, SB, FB, FW[‡], SV[‡]
Material: Aluminum



◀ ZW + color

Height: 3.9" (99 mm)
Diameter: 2.3" (58 mm)
Base Diameter: 4.7" (119 mm)
LED: 1, 3
Finish: CU, SS, BZ, DG, WI, FB, FW[‡], SV[‡]
Material: Aluminum, Stainless Steel, or Copper

PENDANTS



◀ LE

Height: 3.1" (79 mm)
Diameter: 1.6" (41 mm)
LED: 1
Finish: AB, AT, CU, NP[†], BZ, DG, WI, SB, FB, FW[†], SV[†]
Material: Aluminum or Copper/Brass



◀ VE + color

Height: 4.3" (109 mm)
Diameter: 2.3" (58 mm)
LED: 1, 3
Finish: AB, AT, BS, CU, NP[†], BZ, DG, WI, SB, FB, FW[†], SV[†]
Material: Aluminum or Copper



◀ PS + color

Height: 5.3" (135 mm)
Diameter: 3.0" (76 mm)
LED: 3, 6, 9
Finish: AB, AT, BS, NP[†], CU, BZ, DG, WI, SB, FB, FW[†], SV[†]
Material: Aluminum

IN-GRADES



◀ VO

Diameter: 1.9" (48 mm)
LED: 1
Finish: SS
Material: Stainless Steel



◀ CN-51

Diameter: 3.3" (84 mm)
Lamp: MR-16 LED
Finish: AB
Material: Brass



◀ HP-48 + color

Height: 3.1" (79 mm)
Width: 4.0" (102 mm)
Length: 8.0" (203 mm)
LED: 1
Finish: DS
Material: Composite



◀ FC + color

Height: LV: 5.1" (130 mm)
 RG: 4.8" (122 mm)
 CW: 6.8" (173 mm)
 GW: 5.7" (145 mm)
Diameter: 4.0" (102 mm)
LED: 1, 3, 6, 9, or MR-16 LED Lamp
Finish: AB, AT, BS, NP[†], BZ, DG, WI, SB, FB, FW[†], SV[†]
Material: Brass



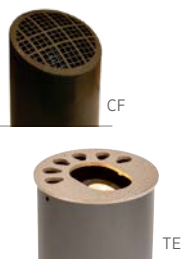
◀ RP

Height:
 RG: 9.0" (229 mm)
 LV: 9.3" (236 mm)
 CW: 11.0" (279 mm)
Diameter: 6.8" (171 mm)
Lamp: MR-16 LED
Finish: BS, NP[†], CB, DT
Material: Brass or Composite



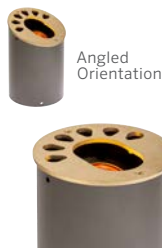
◀ XN-70 + color

Height: 9.4" (240 mm)
Diameter: 7.0" (178 mm)
LED: H1
Finish: SS, BZ, DG, WI, SB, FB, FW[†], SV[†]
Material: Stainless Steel



◀ CF/TE

Height: 9.2" (234 mm)
Diameter: 6.1" (155 mm)
LED: PAR-36 Lamp or MR-16 LED
Finish: BS, NP[†], BZ, DG, WI, SB, FB, FW[†], SV[†], CB, DT
Material: Brass, Aluminum, or Composite



◀ KG + color

Height: 9.2" (234 mm)
Diameter: 6.1" (155 mm)
LED: 3, 6, 9
Finish: AB, AT, BS, NP[†], BZ, DG, WI, SB, FB, FW[†], SV[†]
Material: Brass or Aluminum

LINE-VOLTAGE LIGHTS



◀ A-CT4/A-CT5

Height:
A-CT4: 8.5" (216 mm)
A-CT5: 11.5" (293 mm)
Width:
A-CT4: 4.0" (102 mm)
A-CT5: 5.0" (127 mm)
Output: L07-L20
Finish: BZ, WI, FB, CU,
DG, FW[‡], SV[‡]
Material: Aluminum



◀ A-ST5

Height: 11.5" (293 mm)
Width: 5.0" (127 mm)
Output: L07-L20
Finish: BZ, DG, WI, SB,
FB, FW[‡], SV[‡]
Material: Aluminum

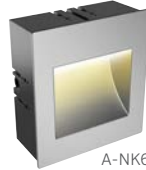


◀ A-KN

Height: 15.7" (399 mm)
Diameter: 10.5" (267 mm)
Output: L07-L20
Finish: BZ, DG, WI, SB,
FB, FW[‡], SV[‡]
Material: Aluminum

◀ A-HS

Height: 2.3" (58 mm)
Width: 8.0" (203 mm)
Depth: 3.4" (86 mm)
Output: L06-L11
Finish: BZ, DG, WI, SB,
FB, FW[‡], SV[‡]
Material: Aluminum



◀ A-NK4/A-NK6

Height:
A-NK4: 5.8" (147 mm)
A-NK6: 11.2" (285 mm)
Width:
A-NK4: 5.8" (147 mm)
A-NK6: 11.2" (285 mm)
Output: L04-L20
Finish: BZ, DG, WI, SB, FB,
FW[‡], SV[‡]
Material: Aluminum

◀ A-BR10

Height: 42.0" (1.1 m)
Width: 9.7" (264 mm)
Output: L07-L20
Finish: BZ, WI, FB, CU,
DG, FW[‡], SV[‡]
Material: Aluminum



UNDERWATER LIGHTS



◀ LP + color

Height: 1.9" (48 mm)
Diameter: 2.7" (69 mm)
LED: 1, 3
Material: Brass



◀ LL + color

Length: 4.0" (102 mm)
Diameter: 3.2" (81 mm)
LED: 3, 6, 9
Material: Brass



◀ LB

Height: 5.2" (132 mm)
Diameter: 3.0" (76 mm)
Lamp: MR-16 LED
Material: Brass



TASK LIGHTS

◀ BQ

Arm Length: 24.0" (610 mm)
Base Diameter: 3.6" (91 mm)
Head Diameter: 1.8" (46 mm)
LED: 1
Material: Stainless Steel



LUXOR® CONTROL



◀ LUX

Height: 13.0" (330 mm)
Width: 8.0" (203 mm)
Depth: 5.0" (127 mm)
Power: 300 W
Finish: SS, M



◀ LSAT

Height: 13.0" (330 mm)
Width: 8.0" (203 mm)
Depth: 5.0" (127 mm)
Power: 300 W
Finish: SS, M



◀ LINKMOD

Luxor Wireless Linking Module



◀ WIFIMOD2

Luxor Controller Wi-Fi Module



◀ LAM

Luxor Light Assignment Module for use with the Luxor App and Luxor Cloud Control



◀ PROGRAMMING ADAPTER

LED board programming adapter (p/n 752605)

LUXOR CUBES



◀ LCM-LV

Max Load: 60 W/5 A
Supports: AC Dimmable LEDs and Incandescent



◀ LCM-RLY-010V

Max Load: 250 VAC/5 A
Supports: Relay Switch



◀ LCM-HV

Max Load: 400 W/ 3.3 A
Supports: AC Dimmable LEDs and Incandescent

TRANSFORMERS AND CONTROLLERS



◀ EX

Height: 12.0" (305 mm)
Width: 5.0" (127 mm)
Depth: 5.5" (140 mm)
Power: 150 W
Finish: SS, M



◀ PX

Height: 13.5" (343 mm)
Width: 7.5" (191 mm)
Depth: 6.0" (152 mm)
Power: 150 W, 300 W, 600 W, 900 W
Finish: SS



◀ DX

Height: 11.4" (289 mm)
Width: 7.1" (181 mm)
Depth: 5.0" (128 mm)
Power: 150 W, 300 W
Finish: SS, M



◀ STEP-DOWN TRANSFORMERS

ST-120-DIM
Input Voltage: 120 V
Output Voltage: 12 V
Power: 60 W

ST-UV
Input Voltage: 120 V to 240 V
Output Voltage: 12 V
Power: 30 W

ST-HV
Input Voltage: 120 V to 240 V
Output Voltage: 12 V
Power: 16 W

LAMPS

◀ MR-11 ECO

Base: GU4
Beam Angle: FL
Max Lumens: 175 lm
Wattage: 3.3 VA



◀ MR-16 ECO

Base: GU5.3
Beam Angle: FL, WF
Max Lumens: 635 lm
Wattage: 6 VA, 9 VA



◀ MR-16 LED

Base: GU5.3
Beam Angle: VN, FL, WF
Max Lumens: 450 lm
Wattage: 4.3 VA, 5.4 VA, 6.5 VA



◀ MR-16 ZD

Base: GU5.3
Beam Angle: VN, FL, WF
Max Lumens: 450 lm
Wattage: 5.4 VA, 6.5 VA



◀ G4 LED

Base: G4
Max Lumens: 123 lm
Wattage: 1.0 VA, 1.3 VA, 1.7 VA



1.0 VA 1.3 VA 1.7 VA

◀ PAR-36 ECO

Base: G53 Screw Terminal
Beam Angle: FL, WF
Max Lumens: 860 lm
Wattage: 8.5 VA, 11.3 VA



ACCESSORIES

◀ STRAIGHT RISERS

Risers with 1/2" threaded male and female coupling options



◀ SIGN LIGHT RISERS

Risers at 24" (0.61 m), 36" (0.91 m), and 48" (1.22 m) lengths, compatible with surface-mounted wall plates



◀ TREE RING

18" (0.46 m) and 24" (0.61 m) diameters with six fixture positions for up or down lights



◀ DIM-LV

Low-Voltage Dimmer for in-line dimming control for any low-voltage fixture



◀ SURGE-MOD

Surge Protection Module for LED lighting fixtures and lamps



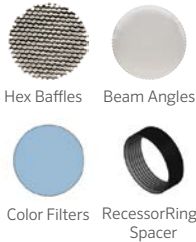
◀ WIRE CONNECTIONS

Heat Shrink Wire Connectors



◀ LENS ACCESSORIES

Integrated LED, MR-11 LED, or MR-16 LED sizes for glare control, shielding, and color temperature shifts



◀ MOUNTING OPTIONS

Junction boxes, surface mounts, brackets, and post mounts for 1/2" threaded fixtures



FINISHES

Metal				Powder Coat: Standard						Powder Coat: Specialty ²				Composite					
AB	AB	AT	AT	CU	BS	SS	NP ²	BZ	DG	WI	SB	FB	M	FW ²	SV ²	CB	DT	DS	BC
Antique Bronze on Copper	Antique Bronze on Brass	Antique Tumbled on Copper	Antique Tumbled on Brass	Copper	Natural Brass	Stainless Steel	Nickel Plate	Bronze Metallic	Desert Granite	Weathered Iron	Sedona Brown	Black	Matte Gray	Flat White	Silver	Camo Bronze	Desert Tan	Dark Slate	Black Composite

²Items in this finish are not returnable.

FXLuminaire

A Hunter Industries Company

Our mission is to create the most energy-efficient lighting products in the world while maintaining the highest level of quality and reliability. In every instance we will back our innovations with the unwavering support our customers need to succeed.



Gregory R. Hunter, CEO of Hunter Industries



Denise Mullikin, President, Landscape Irrigation and Outdoor Lighting

Website fxl.com | Customer Support +1-760-744-5240