

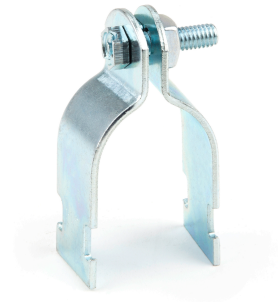
# Product Specifications



## 1-1/4" EMT Strut Clamp

**Part Number** SC125E  
**Category Number** 5391  
**UPC** 781002817161

EMT Strut Clamps are used to secure EMT conduit to strut channel in overhead or wall mount applications. They are electrogalvanized for superior corrosion resistance and come preassembled with a keps nut and slotted hex head bolt.



### Physical Characteristics

Type	Strut Clamp
Style	EMT
EMT Size (in)	1-1/4"
Bolt Size	1/4"-20 x 3/4"
Size	1-1/4"
Connection	Clamp On
Material	Carbon Steel
Finish	Electrogalvanized
Gauge	14

### Performance Data

Maximum Load (lb)	600 lbs
Applications	Secures EMT Conduit to Strut Channel
Special Features	Assembled With Keps Nut For Easy Installation, Suitable For Use With 12 or 14 Gauge Metal Framing Channel
For Use With	EMT

### Packaging Details

Standard Qty	50
Price Per	100
Package Length	8.27
Package Width	5.35
Package Height	5.59
Net Weight	0.17
Package Weight	8.50

### Certifications

RoHS Compliant	No
----------------	----