

## DuraPort® Industrial Connector Housing

### APPLICATION

DuraPort industrial products provide IP67-class protection to safeguard your connectivity from ingress of dust and water conditions often found in an industrial environment.



### SPECIFICATION

Connectors and related components shall be IP67 rated. Connector housing shall be made of PBT, be cULus listed, and be compliant with ANSI/TIA-1005 and ANSI/TIA-568.

### COUNTRY OF ORIGIN

USA

### WARRANTY INFORMATION

For a copy of Leviton product warranties, visit [www.leviton.com/warranty](http://www.leviton.com/warranty).

### FEATURES

- IP67-rated environmental sealing (dust/water protection)
- Encapsulated RJ-45 design protects integral components
- Patented design
- Withstands ingress of water during washdown
- Compatible with Atlas-X1™, eXtreme®, and Gigamax® QuickPort® jacks
- Twist-lock design for faster installation and changes

### DESIGN CONSIDERATIONS

- Uses standard Leviton QuickPort opening to easily replace or upgrade performance without replacing entire outlet
- Mount on PLC enclosures 1.25-inch diameter opening
- Compatible with standard NEMA boxes

### STANDARDS COMPLIANCE

Meets or exceeds all applicable standards: cULus Listed; complies with ANSI/TIA-1005, ANSI/TIA-568. cULus Listed (UL 1863, CAN/CSA-C22.2 No. 182.4-1990).

### PHYSICAL SPECIFICATIONS

<b>Ingress Protection:</b>	IP67 (dust/water)
<b>Corrosion:</b>	Resistant to most common chemicals, oils, and cleaning agents
<b>Temperature:</b>	-40°C to 65°C (-40°F to 149°F)
<b>Vibration:</b>	Frequency range 10-500Hz Acceleration 5g (operational)
<b>Mating Cycles:</b>	750 minimum
<b>Housing:</b>	Polybutylene terephthalate (PBT)

#### Leviton Network Solutions

2222 - 222nd St. SE  
Bothell, WA 98021-4416

tel 1-800-824-3005  
tel +1-425-486-2222  
[appeng@leviton.com](mailto:appeng@leviton.com)  
[www.leviton.com](http://www.leviton.com)

#### Asia / Pacific

T +1.631.812.6228  
E [infoasean@leviton.com](mailto:infoasean@leviton.com)

#### Europe

T +44.0.1592.772124  
E [customerserviceeu@leviton.com](mailto:customerserviceeu@leviton.com)

#### Canada

T +1.514.954.1840  
E [pcservice@leviton.com](mailto:pcservice@leviton.com)

#### Mexico

T +52.55.5082.1040  
E [lsamarketing@leviton.com](mailto:lsamarketing@leviton.com)

#### Caribbean

T +1.954.593.1896  
E [infocaribbean@leviton.com](mailto:infocaribbean@leviton.com)

#### Middle East & Africa

T +971.4.247.9800  
E [lmeinfo@leviton.com](mailto:lmeinfo@leviton.com)

#### China

T +852.2774.9876  
E [infochina@leviton.com](mailto:infochina@leviton.com)

#### South Korea

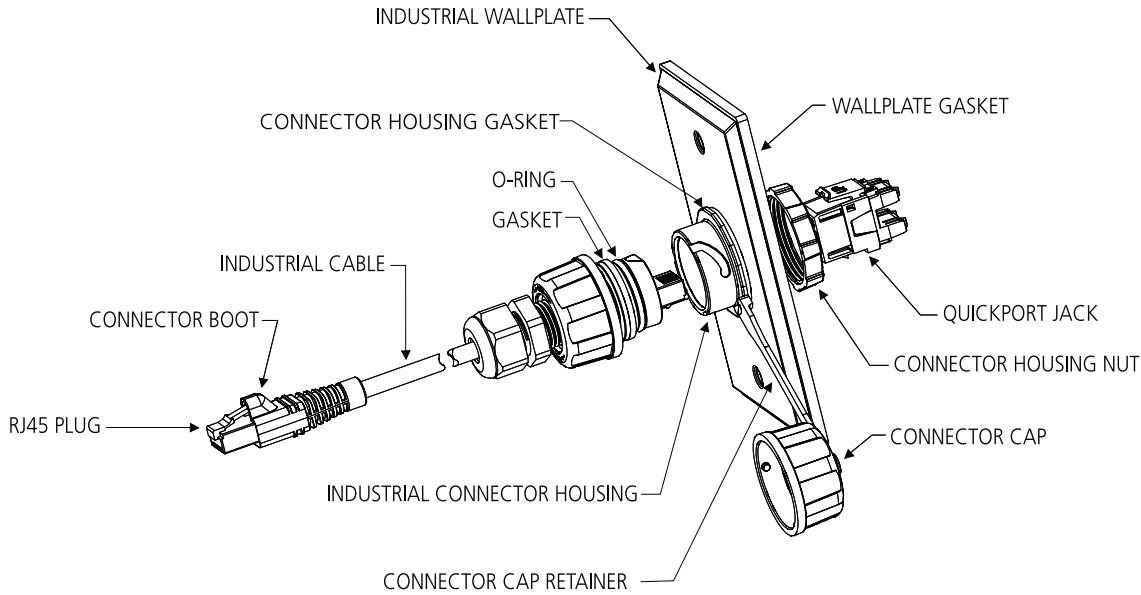
T +82.2.3273.9963  
E [infokorea@leviton.com](mailto:infokorea@leviton.com)

#### Colombia

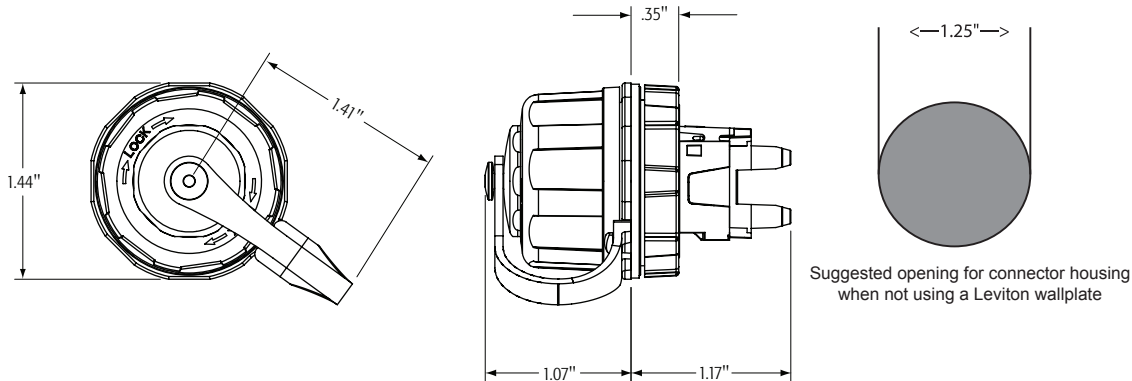
T +57.1.743.6045  
E [infocolombia@leviton.com](mailto:infocolombia@leviton.com)

**ELECTRONIC FILES**

For CAD files, typical specs, or technical drawings (.DXF, .DWG), visit [www.leviton.com](http://www.leviton.com).



**D67xx-00E**



**DURAPORT INDUSTRIAL CONNECTOR HOUSINGS**

Description	Part No.
Housing w/ Connector Cap (connector not included)	D6700-00E
Replacement Connector Cap (connector not included)	D6701-00E