

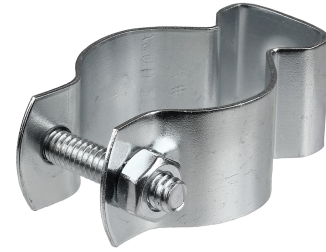
Product Specifications



1-1/2" Conduit Hanger w/ Hex Nut & Bolt

Part Number PH150B
Category Number 5220
UPC 781002283300

Conduit Hangers are used to secure and suspend EMT, PVC, or rigid conduit in overhead applications. They are zinc plated and come assembled with combo round head screws and hex nuts.



Physical Characteristics

| | |
|----------------|------------------|
| Type | Conduit Hanger |
| Style | Pipe |
| Pipe Size (in) | 1-1/2" |
| Rod Size | 1/4" |
| Bolt Size | 1/4"-20 x 1-1/2" |
| Connection | Clamp On |
| Material | Carbon Steel |
| Finish | Zinc Plated |
| Gauge | 16 |

Performance Data

| | |
|-------------------|--|
| Maximum Load (lb) | 80 lbs |
| Applications | Secures and Suspends EMT, PVC, or Rigid Conduit In Overhead Applications |
| Special Features | Combo Round Head Screws, Zinc Plated |
| For Use With | EMT, PVC, or Rigid |

Packaging Details

| | |
|----------------|--------|
| Standard Qty | 100 |
| Price Per | 100 |
| Package Length | 12.44 |
| Package Width | 10.00 |
| Package Height | 9.69 |
| Net Weight | 0.1695 |
| Package Weight | 16.95 |

Certifications

| | |
|-------------------|-----------|
| RoHS Compliant | Yes |
| Industry Standard | UL Listed |