

4

3

2

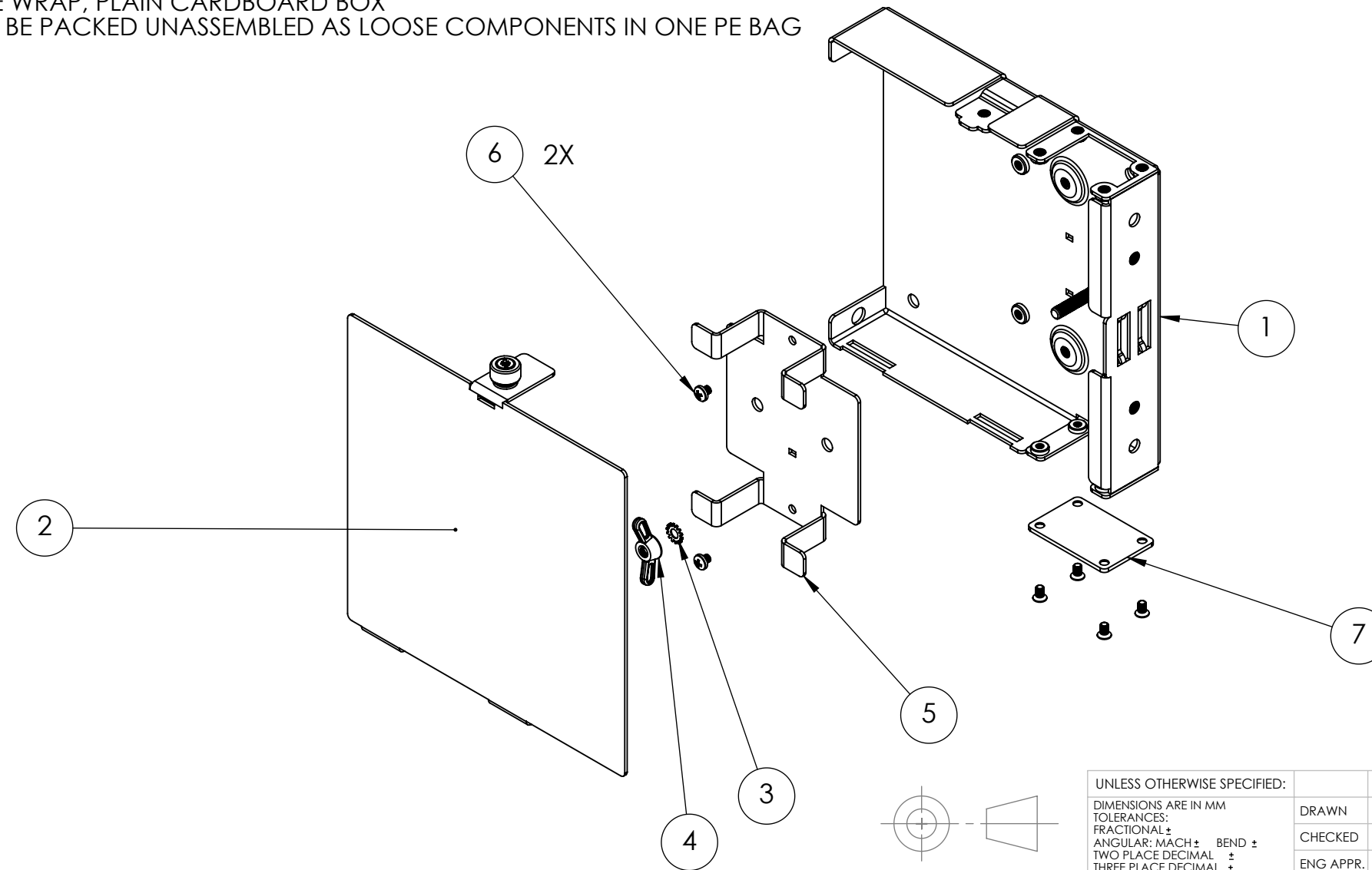
1

ITEM NO.	PART NUMBER	DESCRIPTION	QTY.
1	C-OFDB-02-F01-ASSY [FRAME][SI]	C-OFDB-02-F01-ASSY [FRAME][SI]	1
2	C-OFDB-02-C01-ASSY [COVER][SI]	C-OFDB-02-C01-ASSY [COVER][SI]	1
3	ASME B18.21.1 - 0.141	EXTERNAL TOOTH LOCK WASHER #8	1
4	N/A	#8-32 WING NUT ANSI B18.17-1968 (R1975)	1
5	C-OFDB-02-S01 [SUPPORT][SI]	C-OFDB-02-S01 [SUPPORT][SI]	1
6	CR-PHMS 0.112-40x0.125x0.125-S	MACHINE SCREW #4-40 X .125 IN PHILLIPSFLAT HEAB COUNTERSUNK BLACK	2
7	C-OFDB-02-A01-ASSY [BLANK][PRODUCTION][SI]	C-OFDB-02-A01-ASSY [BLANK][PRODUCTION][SI]	1
8	SPCS-PDS.OFDB-02	PRODUCT DATA SHEET	1
9	SPCS-PI.OFDB-02	PRODUCT INSTRUCTIONS	1
10	SPCS-PD.OFDB-02	PRODUCT CUSTOMER-USE DRAWINGS	1
11	CABLE TIE NYLON 4-IN BLACK	CABLE TIE NYLON 4-IN BLACK	1

REVISIONS				
ZONE	REV.	DESCRIPTION	DATE	APPROVED
	A	C-OFDB-02-ASSY	27-MAR-19	IGS

## NOTES:

- PACKING: PE BAG/BUBBLE WRAP, PLAIN CARDBOARD BOX
- ITEMS 3, 4, 5, 6, 7, 11 MUST BE PACKED UNASSEMBLED AS LOOSE COMPONENTS IN ONE PE BAG



**PROPRIETARY AND CONFIDENTIAL**  
 THE INFORMATION CONTAINED IN THIS DRAWING IS THE SOLE PROPERTY OF SIGNAMAX, INC. ANY REPRODUCTION IN PART OR AS A WHOLE WITHOUT THE WRITTEN PERMISSION OF SIGNAMAX, INC. IS PROHIBITED.

UNLESS OTHERWISE SPECIFIED:		NAME	DATE	<b>SIGNAMAX</b> 999 N.W. 159TH DRIVE, MIAMI, FL 33169, U.S.A.
DIMENSIONS ARE IN MM		DRAWN	IGS	
TOLERANCES:		CHECKED	IGS	27-MAR-19
FRACTIONAL ±		ENG APPR.	IGS	27-MAR-19
ANGULAR: MACH ± BEND ±		MFG APPR.		
TWO PLACE DECIMAL ±		Q.A.		
THREE PLACE DECIMAL ±		COMMENTS:		
INTERPRET GEOMETRIC TOLERANCING PER:		SEE NOTES		
MATERIAL: SEE NOTES				
FINISH: SEE NOTES				
DO NOT SCALE DRAWING				

TITLE		
C-OFDB-02-ASSY OPTICAL FIBER DISTRIBUTION BOX V.02 ASSEMBLY		
SIZE	DWG. NO.	A-JAN-19
B	SPCS-PD.C-OFDB-02-ASSY	
SCALE: 1:2		SHEET 1 OF 1

4

3

2

1