

A CABLE ORGANIZERS



CABLE MANAGEMENT PANEL

PART NO.	DESCRIPTION
CM-10	Horizontal Panel for 19" mounting, .25" x 2" opening, 1 RMU, Ideal for use with CM-01 cinch straps
19SRB	Cable Strain Relief Bar for 19" mounting, 1 RMU (not pictured)

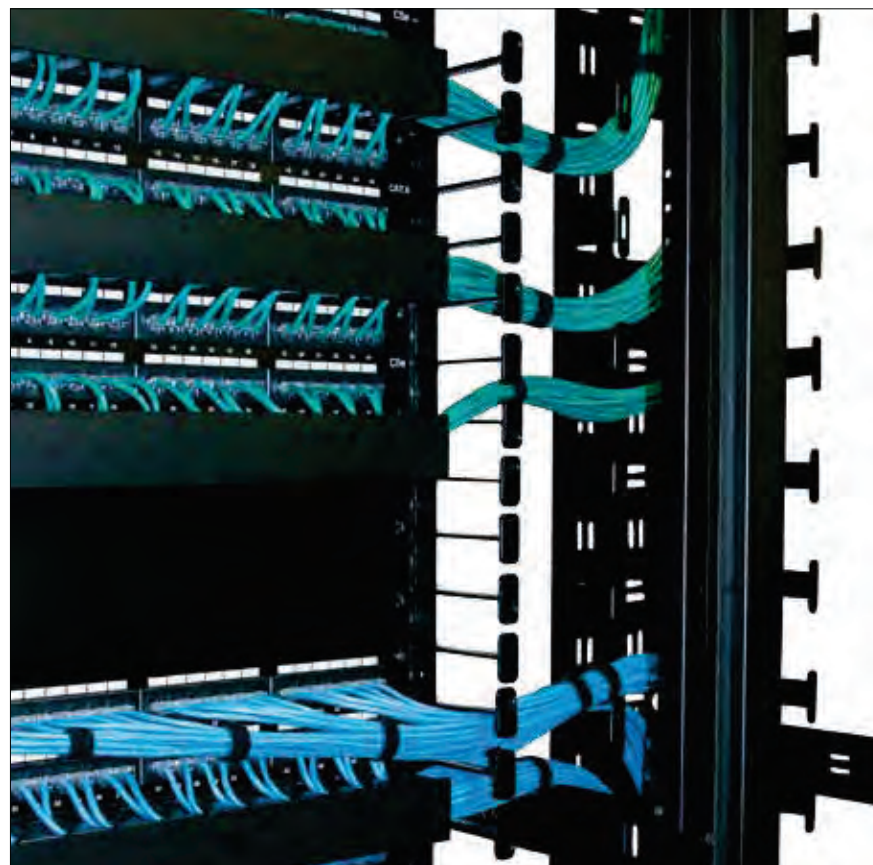


STRAIN RELIEF BAR

PART NO.	DESCRIPTION
CM-03	Back Side Cable Management Bar, 1 RMU
CM-19	Utility Strain Relief Bar for 19" mounting, 1 RMU (not pictured)



EN Enclosure



ES Enclosure with "sidecar"

CABLE MANAGEMENT RAIL KIT

Cable Management Rail Kits are made of multiple pieces of 7 RMU sections of "fingers." When used with ES enclosures, fingers are installed on the front of the rail using Great Lakes flexible mounting profile, a series of holes outside of the EIA pattern (used for fingers and other accessories). EN rails have more than one series of holes (as pictured), so fingers can be installed on the front, side, or rear of rail. Fingers align with rack mount units on both enclosures, creating clean cable pathways.

PART NO.	DESCRIPTION
ESC-K12	ES Cable Management Rail Kit for front or rear rails; includes 12 sections of "fingers" (each section, 7 RMU); rails will need to be recessed 4.5"
ENC-K24	EN Cable Management Rail Kit for front or rear rails; includes 24 sections of "fingers" (each section, 7 RMU)