

Securitron® AQL Series Intelligent Power Supplies

Product Overview

Experience a safer
and more open world



Securitron AQL Series power supplies harness the reliability of ASSA ABLOY and the technology of LifeSafety Power®

The Securitron AQL Series of switching power supplies is an out-of-the-box solution that offers unique performance and value. It is feature-rich, network management ready and available in 12 or 24 VDC single, dual and multi-voltage units.

Flexible Design

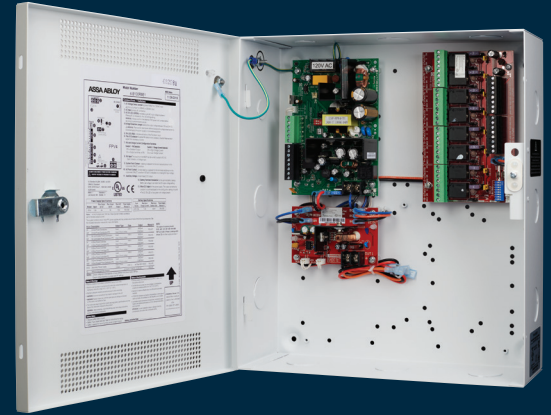
- Multi-voltage capable at both 12 V and 24 V within a single enclosure
- Snap-in-style standoffs and color-coded fast-on connectors make system expansion easier
- Tamper switch included for additional enclosure protection
- Mix and match UL listing

Netlink™ Network Monitoring

- Remote supervision, reporting and control of the Securitron AQL power supply
- One-click or scheduled remote battery test
- Reporting on battery charge status and standby time
- Adds an extra layer of security and peace of mind knowing the system is functioning properly

Friendly & Knowledgeable Support

- Customer service and technical support offer tools and resources to address all questions
- Suite of online modules to assist with training and installation
- Complimentary custom wiring diagrams to clarify complex access control solutions
- MagnaCare® no-fault, no questions asked lifetime warranty even covers installation errors



Features

Standard Features

- Low battery cutoff protects batteries from deep discharge
- Dedicated fast charger prolongs battery life
- Enhanced surge immunity for input/output protection
- LockSafe™ keeps locks cooler by providing a separate, dedicated battery charging circuit
- OutSmart™ technology provides dual-color LED visual notification, which prevents applying incorrect voltages to locking devices [Green: 12 V | Blue: 24 V]
- Auxiliary output rated 1.5 A continuous
- Mix and match UL Listing
- Instant auto-switch to battery on AC loss

- Multi-voltage with Securitron B100 Module
- Integrated Fire Alarm Interface (FAI) allows main output shutdown or disconnect on a per output basis when using an R8 output module
- Network ready with optional Netlink™ module
- MagnaCare® lifetime replacement, no-fault, no questions asked warranty

Optional Features

- Enhanced Network Management
 - AC line voltage monitoring
 - Remote battery monitoring and testing
 - 1000 event data recording
 - Email fault reporting

Specifications

Certifications

- UL 294 Listed
- UL 603 Listed
- UL 1076 Listed
- ULC-S318 Listed
- ULC-S319 Listed
- CSA C22.2 #107.1
- RoHS Compliant

Electrical

- 12 VDC or 24 VDC output
- 12 VDC & 24 VDC output (optional) with Securitron B100
- 120 or 230 VAC input
- Up to 91% efficiency

Environmental

- Operating Temperature: 32° to 120° F [0° to 49° C]

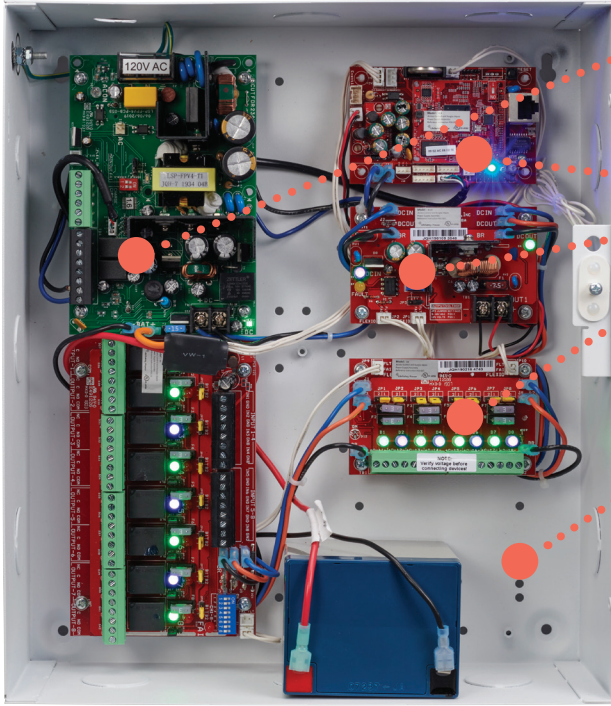
Max Shipping Weight

- 15.50 lbs [7 kg]

Dimensions

- 14" H x 12" W x 4.5" D [355.6mm H x 304.8mm W x 114.3mm D]

Step by Step Configuration



- 1** Select One Power Supply Module
- AQL4
 - AQL6
 - AQL102
 - AQL104

- 2** Select Required Modules*
- B100
 - R8
 - D8
 - D8P
 - NL4

- 3** Choose Enclosure**
- E1

- 4** Combine to Generate Final Part Number
- Example:
- AQL4 - B100 + D8 + R8 + NL4 + E1 =
AQL4-B100D8R8NL4E1

*When ordering more than one module, indicate quantity before the part number to generate final part number, for example, Securiton AQL4-3D8E1.

**No Enclosure = Module PCB only. Each module may be ordered separately.

Models

MODELS	AMPERAGE	RATED VOLTAGE	INPUT VOLTAGE	TYPICAL OUTPUT VOLTAGE	MULTI-VOLTAGE READY	CLASS 2 OUTPUTS
Securiton AQL4*	4 3	12 VDC 24 VDC	120/230 VAC	12.5 or 25 VDC	Yes	Yes
Securiton AQL6	6	12 or 24 VDC	120/230 VAC	12.5 or 25 VDC	Yes	with PTC distribution boards
Securiton AQL102	10	12 VDC	120/230 VAC	12.5 VDC	Yes**	with PTC distribution boards
Securiton AQL104	10	24 VDC	120/230 VAC	25 VDC	Yes	with PTC distribution boards

*Securiton AQL4 is field selectable. **Multi-voltage of 5 to 9 VDC only

How to Order

POWER SUPPLY MODULE	SECONDARY VOLTAGE MODULE	DISTRIBUTION MODULE	D8 FUSE STYLE	RELAY MODULE	NETLINK MODULE	ENCLOSURE
AQL4	-B100	2D8	P	R8	NL4	E1
AQL4	(blank)	(blank)	(blank) 3 A ATM Fuse	(blank)	(blank)	(blank) Module Only
AQL6	B100	D8	P 2.5 A PTC Polyswitch	R8	NL4	E1
AQL102		2D8		2R8 3R8		
AQL104		3D8 4D8 5D8 6D8				

Securiton AQL4 in an E1 enclosure has six module spaces where B100, NL4 and D8/D8P each take up one module space. R8 takes up two module spaces.

Securiton AQL6, Securiton AQL102 and Securiton AQL104 in an E1 enclosure has four module spaces where B100, NL4 and D8/D8P each take up one module space. R8 takes up two module spaces.

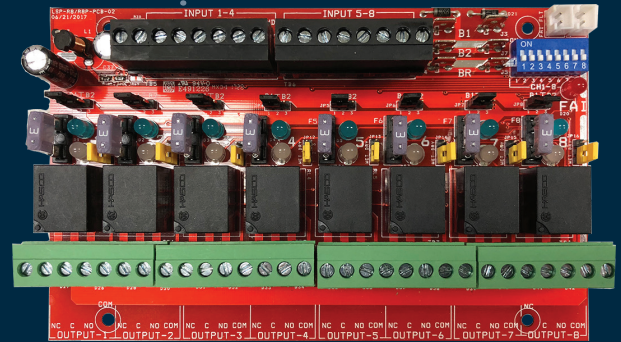
The Securiton E1 enclosure can hold a maximum of two R8 modules.

Enhance any Securitron AQL Series Power Supply System quickly and easily

Securitron AQL Series modules allow for further expansion and improved functionality of the power supply system. Each is provided with snap-in-style standoffs and color coded fast-on connectors to make upgrading easier.

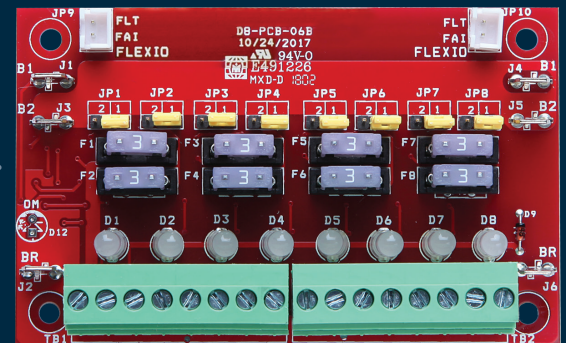
Securitron R8 Power *Relay* Module

☆ Features	Why it matters
8 individually relay 3 A outputs	Direct lock control and additional accessory power distribution
Field selectable, dual buss power architecture	Ability to create a multi-voltage system for 12 and 24 VDC needs
LED visual indicators for both relay activation and voltage level [Green 12 V Blue 24 V]	Prevents applying incorrect output voltage to field devices such as locks or access panels
Configurable for fail-safe, fail-secure, and dry contact operation modes	Provides options to customize the operation of individual relay outputs
Fire alarm fault detection & reporting	Modify individual relay outputs to respond to FAI triggers
Multi-voltage capable	Multi-voltage ready when used with the Securitron B100



Securitron D8/D8P Power *Distribution* Module

☆ Features	Why it matters
8 individually programmable outputs	Additional auxiliary power distribution
Field selectable, dual buss power connections	Ability to create a multi-voltage system for 12 and 24 VDC needs
Dual color output LED indicators [Green 12 V Blue 24 V]	Prevents applying incorrect voltages to locking devices
Individually protected outputs via ATM or resettable PTC fuses	Helps protect individual locks and accessories from overcurrent
Multi-voltage capable	Multi-voltage ready when used with the B100

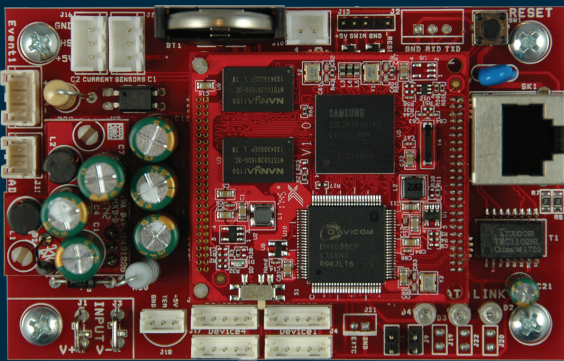


How to Order

MODEL SERIES	FUSE TYPE
D8	P
D8 8 Continuous outputs	(blank) 3 A ATM Fuse P 2.5 A polyswitch fuse



Securitron Netlink Power Monitoring Module



★ Features

Why it matters

Monitor health and status of the Securitron AQL power supply and battery

Ensure the power system and battery are operating safely and efficiently

One-click or scheduled remote battery test to report battery health status

Never forget to check your system's battery backup again — automatic testing makes it easy

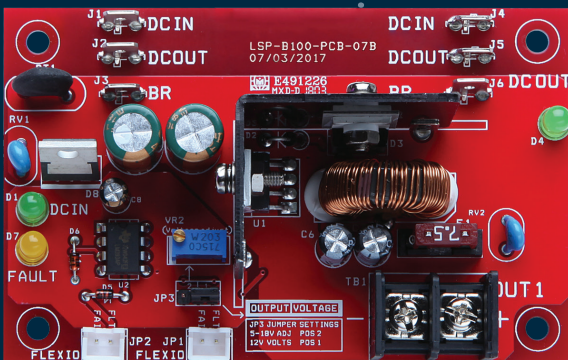
System monitoring email and text message notifications for a wide variety of power system statuses and variables

Receive alerts regarding changes in the performance of the Securitron AQL power supply quickly and conveniently

Encrypted password, user, and certificate logging

Encryption protects sensitive information that may be stored or electronically transmitted

Securitron B100 Secondary Voltage Module



★ Features

Why it matters

Jumper selectable output voltage — 12 VDC fixed and 5-18 VDC adjustable

Easily and economically adds an additional voltage to any Securitron AQL 24 VDC power system

LED voltage indicators [Green: 12 V | Blue: 24 V]

Prevents applying incorrect voltages to locking devices

Overload, short circuit and overtemperature protection

Helps prevent damage to the module and power system

Faults report to Securitron AQL power supply on abnormal operation, voltage loss, and overcurrent

Assists in avoiding damage to the module and power system

Product Comparison Guide

PRODUCT DISTINCTIONS	SECURITRON AQL SERIES	COMPETITOR 1	SECURITRON AQD/AQS SERIES (110 VAC)	COMPETITOR 2
Dual voltage capability	B100 (5–18 VDC)	5 or 12 VDC only		
Integrated competitor mounting holes on PCB	Yes		AQD6 only	
Standard lockset / tamper switch	Lockset & tamper	Lockset only	Lockset only	Lockset only
<i>On board current sensors (reported to Network Monitor)</i>				
Battery current	Requires Securitron Netlink sensor			
Output current	✓	✓		
POWER SUPPLY		<i>*Two separate boards</i>		<i>*Two separate boards</i>
AC input — (* separate models for 120 V or 230 VAC)	120 or 230 VAC	*120 VAC 230 VAC	120 or 230 VAC	*120 VAC 230 VAC
Warranty (NF/NQA — no-fault, no questions asked lifetime)	NF/NQA Lifetime	Limited Lifetime	NF/NQA Lifetime	Limited Lifetime
Built-in fire alarm disconnect	✓	✓		
Overtemperature protection	✓		✓	
Power supply derating at 120° F [49° C]	100%	100%	100%	100%
Power supply run-time monitoring	✓			
Computer or network interface	✓	✓		
Comprehensive fault detection	✓			
POWER OUTPUTS				
LockSafe™ — separate voltages for DC output	✓		✓	
Dual Buss distribution architecture	✓	Limited accessory boards		
Auxiliary output	1.5 A	1 A		
POWER SUPPLY REPORTING & VISUAL INDICATORS				
FAI, reverse battery detect	✓	✓		
Power supply internal fault counter with reset	✓			
Battery install date & time counter	✓	Requires accessory		
Customizable AC and system fault delay periods	✓	Requires accessory		
<i>Visual Indicators</i>				
FAI indication	✓	✓		✓
OutSmart™ Bi-Color 12/24 V LED Indication	✓	Limited accessory boards		
System fault indicator	✓			
BATTERY CHARGING				
Smart charger — programmable current for optimum charging	✓	✓		
Charger type	CC-CV	Fixed current charger	CC-CV	PTC limiting charger
Dedicated battery charge current	✓	✓	✓ (except AQD1)	
Maximum battery charge current	1 A / 1.6 A	1.54 A	0.1 A–1.5 A based on model	0.7 A
Maximum battery charge capability (48-hours charging)	40 AH/65 AH	65 AH	Varies up to 65 AH	18 AH/18 AH
Low battery disconnect prevents deep discharge	Built-in	Built-in	Built-in	
BATTERY MANAGEMENT & MONITORING				
<i>Battery parameters monitored by the power supply</i>				
Charging current and voltage	✓	✓		
Battery presence	✓	✓		
<i>Battery parameters monitored through network connection</i>				
Required battery backup time	✓			
Actual battery backup time (with alert when backup time failed)	✓			
System running on battery	✓	✓		
Battery replacement date	✓	✓		
Battery life time — total hours	✓			
Low or dead battery	✓	✓		
NETWORK MANAGEMENT				
Power supply network capable	✓	✓		
Power supply data connection method #1	SPI			
Email / SNMP fault notification	✓	✓		
<i>Network control</i>				
One-click or scheduled battery load testing	✓			
1000 Event data recorder, user can export record to CSV file	✓	100 events		
<i>Network reporting</i>				
On AC loss or system fault	✓	✓		
When FAI activated	✓			
<i>Cybersecurity, integrations</i>				
Cybersecurity enhancement with 3rd party pen test and report	✓			
AGENCY LISTINGS				
USA	Access, Fire, Security, CFSM	Access, Fire, Security, CFSM	Access, Fire, Security, CFSM	Access, Fire, Security, CFSM
Canada	Access, Security	Access, Security	Access, Security	Access, Security

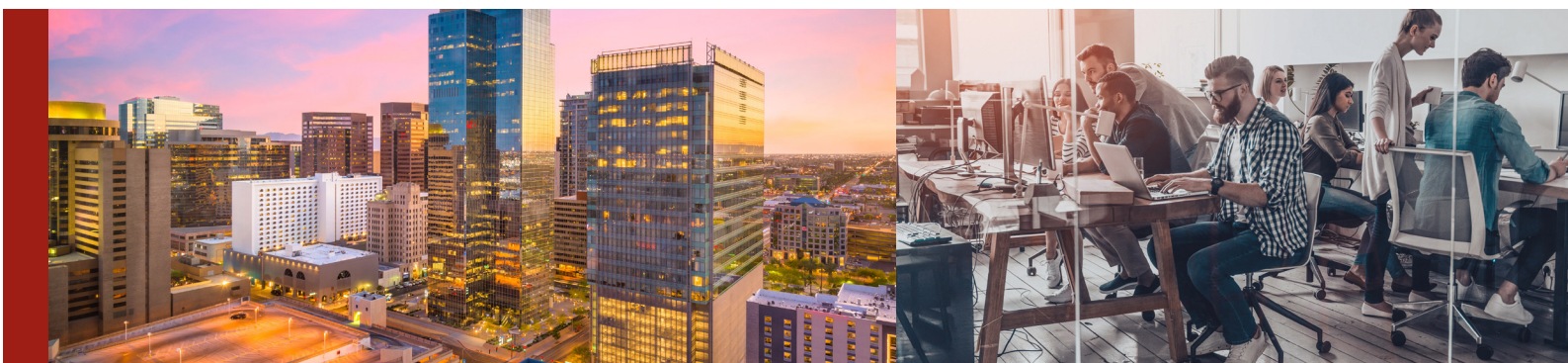
Power Supply Cross Reference Guide

SECURITRON AQL SERIES	ALTRONIX ULX SERIES	ALTRONIX EFLOW SERIES (110 VAC)	ALTRONIX EFLOW SERIES (230 VAC)
Securitron AQL4-E1	AL300ULX	eFlow3N	eFlow3NV
Securitron AQL4-D8E1	AL300ULPD4	eFlow3N4	eFlow3N4V
Securitron AQL4-D8PE1	AL300ULPD4CB	eFlow3N4D	eFlow3N4DV
Securitron AQL4-E1	AL400ULX	eFlow4N	eFlow4NV
Securitron AQL4-D8E1	AL400ULPD8	eFlow4N8	eFlow4N8V
Securitron AQL4-D8PE1	AL400ULPD8CB	eFlow4N8D	eFlow4N8DV
Securitron AQL6-E1	AL600ULX	eFlow6N	eFlow6NV
Securitron AQL6-D8E1	AL600ULPD8	eFlow6N8	eFlow6N8V
Securitron AQL6-D8PE1	AL600ULPD8CB	eFlow6N8D	eFlow6N8DV
Securitron AQL6-2D8E1	AL600ULXPD16	eFlow6NX16	eFlow6NX16V
Securitron AQL6-2D8PE1	AL600ULXPD16CB	eFlow6NX16D	eFlow6NX16DV
Securitron AQL102-E1	AL1012ULX	eFlow102NX	eFlow102NXV
Securitron AQL102-D8E1	AL1012ULXPD8	eFlow102NX8	eFlow102NX8V
Securitron AQL102-D8PE1	AL1012ULXPD8CB	eFlow102NX8D	eFlow102NX8DV
Securitron AQL102-2D8E1	AL1012ULXPD16	eFlow102NX16	eFlow102NX16V
Securitron AQL102-2D8PE1	AL1012ULXPD16CB	eFlow102NX16D	eFlow102NX16DV
Securitron AQL104-E1	AL1024ULX	eFlow104NX	eFlow104NXV
Securitron AQL104-D8E1	AL1024ULXPD8	eFlow104NX8	eFlow104NX8V
Securitron AQL104-D8PE1	AL1024ULXPD8CB	eFlow104NX8D	eFlow104NX8DV
Securitron AQL104-2D8E1	AL1024ULXPD16	eFlow104NX16	eFlow104NX16V
Securitron AQL104-2D8PE1	AL1024ULXPD16CB	eFlow104NX16D	eFlow104NX16DV

SECURITRON AQL-R8	ALTRONIX ACM SERIES	ALTRONIX EFLOW SERIES	ALTRONIX EFLOW SERIES (230 VAC)
Securitron AQL4-R8E1	AL400ULACM	eFlow4NA8	eFlow4NA8V
Securitron AQL6-R8E1	AL600ULACM	eFlow6NA8	eFlow6NA8V
Securitron AQL102-R8E1	AL1012ULACM	eFlow102NA8	eFlow102NA8V
Securitron AQL104-R8E1	AL1024ULACM	eFlow104NA8	eFlow104NA8V

SECURITRON AQL POWER BOARDS	ALTRONIX ACM SERIES	ALTRONIX EFLOW SERIES	ALTRONIX EFLOW SERIES (230 VAC)
Securitron AQL4	AL400	eflow4	eflow4
Securitron AQL6	AL600	eflow6	eflow6
Securitron AQL102	AL1012	eflow102	eflow102
Securitron AQL104	AL1024	eflow104	eflow104

SECURITRON AQL MODULES	ALTRONIX ACM SERIES	ALTRONIX EFLOW SERIES	ALTRONIX EFLOW SERIES (230 VAC)
Securitron R8	ACM8 or ACMS8	ACM8 or ACMS8	ACM8 or ACMS8
Securitron D8	PD8	PD8	PD8
Securitron D8P	PD8CB	PD8CB	PD8CB
Securitron Netlink™ (NL4)	LINQ2	LINQ2	LINQ2
Securitron B100	VR6	VR6	VR6





The ASSA ABLOY Group is the global leader in access solutions. Every day we help people feel safe, secure and experience a more open world.

SECURITRON
ASSA ABLOY

USA

800 626 7590 | f. 866 582 4641 | securitron.com
customerservice.securitron@assaabloy.com
techsupport.securitron@assaabloy.com
orders.securitron@assaabloy.com

CANADA

800 461 3007 | f. 800 461 8989 | assaabloydss.ca
sales.dss.ca@assaabloy.com
orders.dss.ca@assaabloy.com

Printed in the U.S.

Patent pending and/or patent www.assaabloydss.com/patents

Copyright © 2021-2022, Hanchett Entry Systems, Inc., an ASSA ABLOY Group company. All rights reserved. Reproduction in whole or in part without the express written permission of Hanchett Entry Systems, Inc. is prohibited. SEC-092-1221

securitron.com

Experience a safer
and more open world