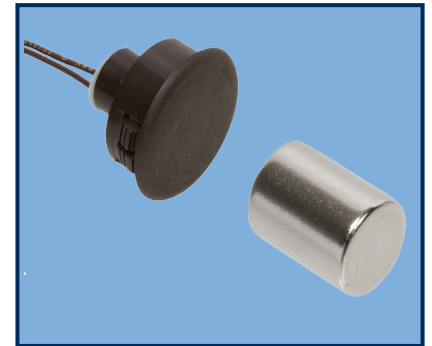


## DESCRIPTION

Nascom's N1178 3750 Series is a 1" recessed stubby door contact designed for residential, commercial and industrial steel and wood door applications. The bare D3/8" X L1/2" cylinder NdFeB magnet provides extra installation flexibility.

The N1178 3750 is the installer's choice of contact configuration because the contact set is designed to cut installation times and helps to prevent false alarms caused by shifting or warping doors.

The N1178 3750 Series is designed for installation in every type of hinged door including wood doors.



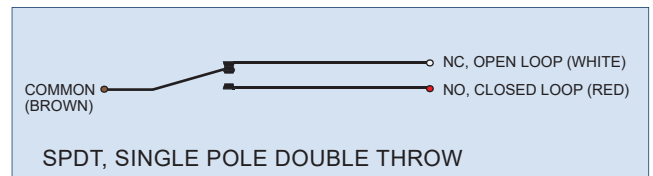
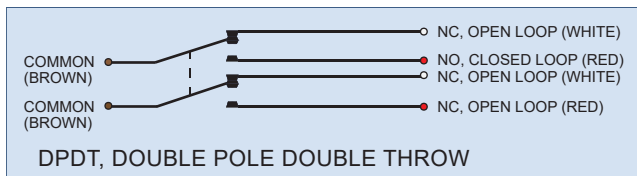
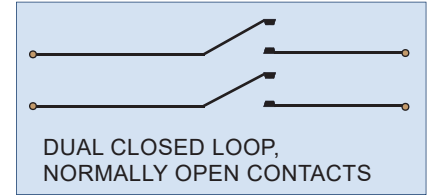
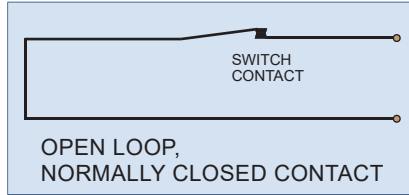
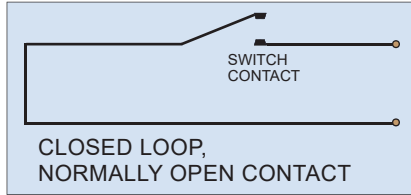
## FEATURES

- SNAP FIT ON STEEL - NO GLUE REQUIRED
- 12" 22AWG WIRE LEADS
- WIDE GAP - N35 NdFeB RARE EARTH MAGNET
- ENCAPSULATED HERMETICALLY SEALED CONTACTS
- POLYPROPYLENE HOUSINGS
- LISTED TO UL634 STANDARD

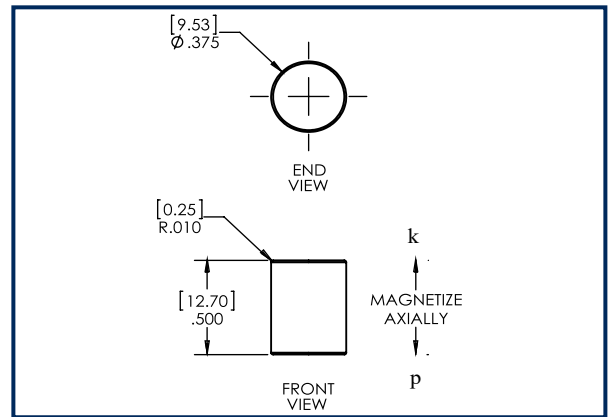
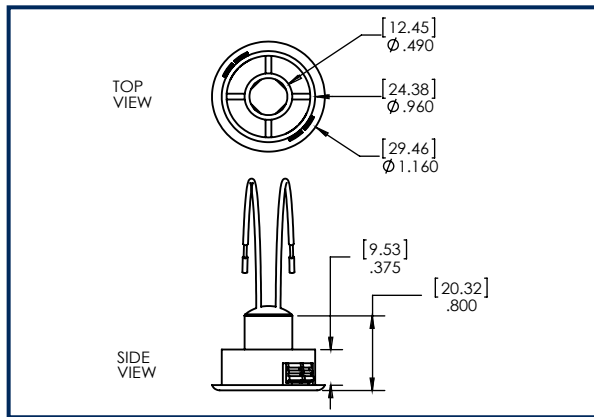
## ORDERING INFORMATION

PART NUMBER	COLOR	OPERATE GAP (in inches)	CONTACT RATING (Max DC/Peak AC Resistive)				STATIC CONTACT RESISTANCE (50mV, 100mA)
			SWITCHING		CARRY		
			V	I	V	I	
<b>CLOSED LOOP, NORMALLY OPEN, 1FA, SWITCH/MAGNET SET:</b>							
N11783750B/ST N11783750G/ST N11783750T/ST N11783750W/ST	BROWN GREY TAN WHITE	0.875 to 1.50	200 VDC	0.5 Amps	10vA	1.5 Amps	150 mOhms
<b>DUAL CLOSED LOOP, NORMALLY OPEN, 1FA, SWITCH/MAGNET SET:</b>							
N11783750B/ST2CR N11783750G/ST2CR N11783750T/ST2CR N11783750W/ST2CR	BROWN GREY TAN WHITE	0.875 to 1.50	200 VDC	0.5 Amps	10vA	1.5 Amps	150 mOhms
<b>OPEN LOOP, NORMALLY CLOSED, 1FB, SWITCH/MAGNET SET:</b>							
N11783750B/STFB N11783750G/STFB N11783750T/STFB N11783750W/STFB	BROWN GREY TAN WHITE	0.75 to 1.25	30 VDC	0.2 Amps	3vA	0.5 Amps	150 mOhms
<b>SINGLE POLE DOUBLE THROW, SWITCH/MAGNET SET:</b>							
N11783750B/STSD N11783750G/STSD N11783750T/STSD N11783750W/STSD	BROWN GREY TAN WHITE	0.75 to 1.25	30 VDC	0.2 Amps	3vA	0.5 Amps	150 mOhms
<b>DOUBLE POLE DOUBLE THROW, SWITCH/MAGNET SET:</b>							
N11783750B/STDD N11783750G/STDD N11783750T/STDD N11783750W/STDD	BROWN GREY TAN WHITE	0.75 to 1.25	30 VDC	0.2 Amps	3vA	0.5 Amps	150 mOhms
<b>HIGH SECURITY, NORMALLY OPEN, 1FA, SWITCH/MAGNET SET:</b>							
N11783750B/STHS N11783750G/STHS N11783750T/STHS N11783750W/STHS	BROWN GREY TAN WHIITE	0.1875 to 0.5000	300 VDC	0.25 Amps	10vA	0.25 Amps	150 mOhms initial

## WIRING SCHEMATIC



## DIMENSIONS - IN [mm]



## INSTALLATION INSTRUCTIONS

- Mark the desired location for the switch and magnet on the top edge of the door and door frame making sure your marks are in alignment.
- Using a square, transfer the marks on to the top edge of the door and the opposing door frame.
- Using a tape measure or graduations on the square, locate the center of the door edge and place an intersecting line with the first mark. Drill a 3/8" hole at the location where the marks intersect.
- Repeat the above step to locate the hole position for the switch in the door frame. Drill a 1" hole in the door frame.
- Apply adhesive or RTV to the end of the magnet and press the magnet into the hole you drilled in the door until flush with top edge of door.
- Connect the switch leads to the alarm system. **Caution!** Hold wire leads, not the switch housing while cutting and stripping to prevent damage to switch.
- Insert wire leads into hole followed by the switch and press the switch into the hole until the head is flush with the door frame.
- Test system for correct operation.

## PART NUMBER SYSTEM

