

SpeedStar™ Cat6A Jack

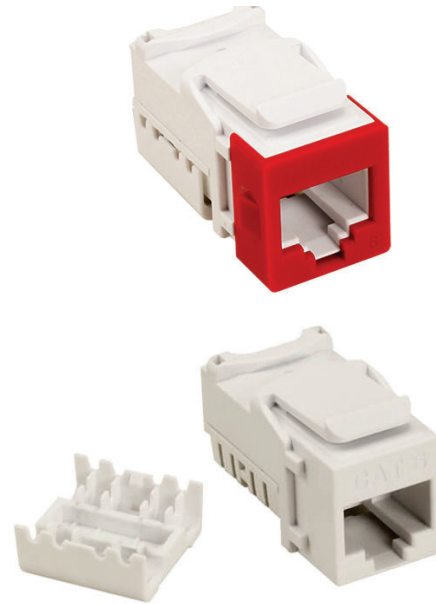
SOHO Pro Cat6A 10 Gig jacks can fit in SpeedStar™ or standard keystone wallplates and provide ultra-high speed data connections for residential and mixed use applications.

These jacks are UL-Listed and offer dual 568A/B wiring labels for easy identification and installation.

Pair with the range of SOHO Pro wall plates for a robust communications connection.

Features & Benefits

- Exceeds Category 6A TIA/EIA-568-C.2 specifications for channel and link performance
- Angled IDC pins aid in maintaining maximum Cat 6A performance, providing a gas tight connection and improved cable retention
- Terminates with standard 110 termination tools
- Compatible with both keystone and SpeedStar™ wall plate and patch panels
- IDC Cap provides protective strain relief.
- 568A/568B color-coded labels facilitate termination
- Easy installation from rear of faceplate
- Complies with Part 68 of the FCC Rules and the requirements adopted by the ACTA



Technical Specifications (JCat6AU-180)

Material:	High-impact fire-retardant plastic UL94 V-0
Construction:	Spring wire: phosphor bronze alloy plated with 50 micro-inch of gold over 100 micro-inches of nickel
Standards	ANSI/TIA/EIA-568.C.2 ISO/IEC 11801 2nd edition EN50173: 2007 IEC 60603-7-51
Term Front Connection Durability:	+750 cycles
Envir. Operating Temp Range:	-40 to 150°F (-40 to 66°C)
PoE Performance:	IEEE 802.3bt Type 4 PoE (90-watt) applications 10GBase-T
Label:	T568A/T568B wiring label
UL/cUL Listed:	Yes

Dimensions

Fits both SpeedStar and standard keystone wall plates

Ordering Information

P/N	Model	Description
135-0213	STAR6APDJ	SpeedStar Cat6A 90° 10 Gig Data jack, includes 8-colored bezels
135-0205	STAR6APDJ-BP	20 STAR6APDJ jacks and 25 white bezels - Bulk pack
135-0212	STARBEZKIT	Package of 8 Bezels
135-0362	STAR6A	Keystone Cat6A 90° 10 Gig data jack, w/o bezels

