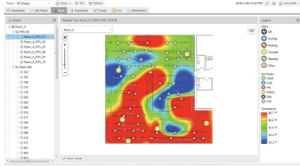


Product data sheet

Specifications



EcoStruxure IT Advisor: Cooling Optimize Control Module

CLCONTROL

⚠ To be discontinued on: Jun 30, 2025

⚠ To be end-of-service on: Jul 15, 2025

⚠ To be discontinued

Overview

Lead time Usually in Stock

Main

Product or Component Type Module

Packing Units

Unit Type of Package 1 PCE

Number of Units in Package 1 1

Package 1 Height 6.50 in (16.510 cm)

Package 1 Width 6.00 in (15.240 cm)

Package 1 Length 12.00 in (30.480 cm)

Package 1 Weight 3.990 lb(US) (1.810 kg)

Contractual warranty

Warranty 2 Years

Price is "List Price" and may be subject to a trade discount – check with your local distributor or retailer for actual price.


Environmental Data

Schneider Electric aims to achieve Net Zero status by 2050 through supply chain partnerships, lower impact materials, and circularity via our ongoing “Use Better, Use Longer, Use Again” campaign to extend product lifetimes and recyclability.


[Environmental Data explained >](#)

[How we assess product sustainability >](#)

Use Better

 Materials and Substances	
Packaging made with recycled cardboard	No
Packaging without single use plastic	No
EU RoHS Directive	Not applicable, out of EU RoHS legal scope

Use Again

 Repack and remanufacture	
Take-back	No