

# TURING SOLARSHIELD Axis Base

All-In-One Outdoor Solar Video Surveillance  
Deployment for Anywhere with Power

LS-KG2-B4A-3Y

## SolarShield Axis Base for multi-sensor w/ 3Y Licenses Includes:

- Easy rapid deployment
- NEMA enclosure System
- Smart Security, powered by Turing Vision Cloud
- 1x 6 Ports POE Switch(4 POE Ports, 2 Data Ports)
- Built-in 4G/LTE router with remote network management
- 4x Axis to Turing cloud with AI 3-year license
- Remote management (Battery Status, Battery Reboot.etc)



Note: Cameras not included



### SIM Carriers Supported



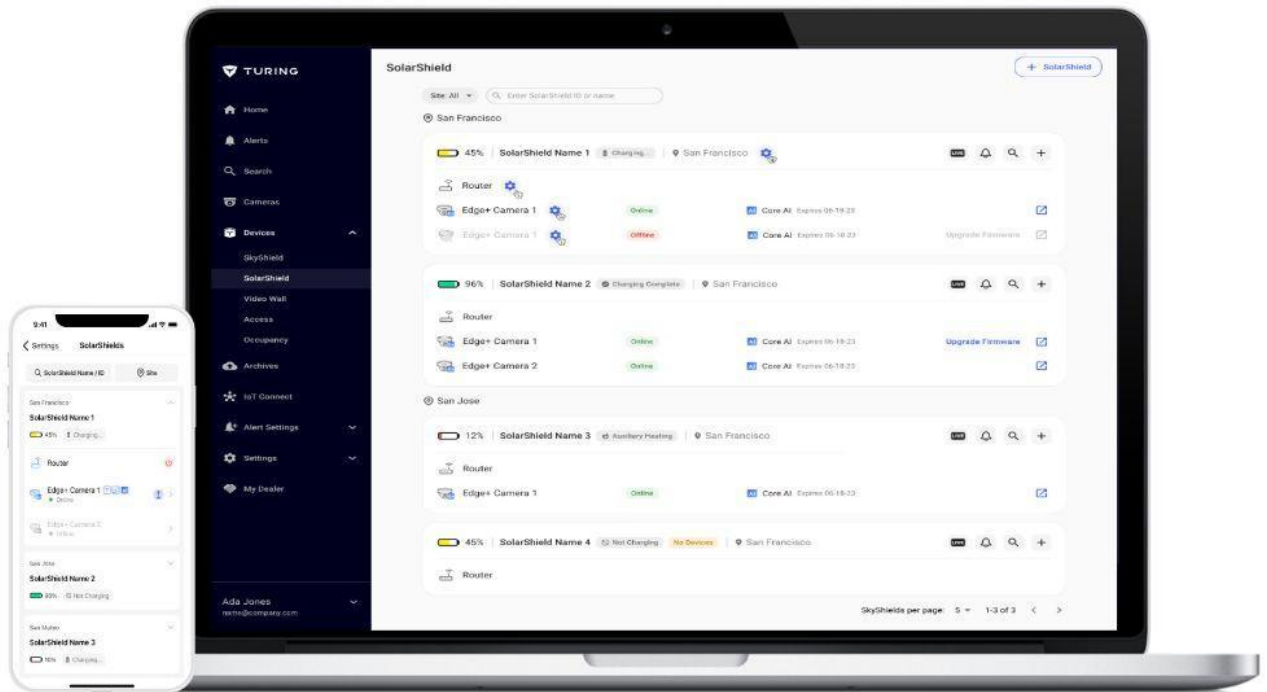
AT&T

T Mobile

verizon



FIRSTNET™  
Built with AT&T



## KEY FEATURES

- ✔ Remote Power management including battery reboot and router reboot
- ✔ Remote status monitoring including charging status, battery status and router status
- ✔ Support Time Lapse video creation on the cloud
- ✔ Receive Instant Smart Alerts for Intruders/Trespassers/Person of Interest/Vehicle of Interest via SMS/Email/Push Notifications
- ✔ Remote Live Stream Monitoring
- ✔ Share Live Camera Streams With First Responders
- ✔ Find Events Fast with Smart Video Search and Archive/Share for Future Reference
- ✔ View Live Footage From any Desktop / Mobile Device
- ✔ Flexible Hybrid Storage Locally or on the Cloud

GENERAL	
<b>Dimensions (LxWxH)</b>	Integrated Bracket: 605 × 485 x 265mm Solar Module: TL-S90W: 1000*516*35mm
<b>Weight</b>	54lbs (without camera)
<b>Working Environment</b>	Outdoor: -30°C~+ 60°C (-22°F~+140°F)
<b>Rating</b>	NEMA3R

POWER	
<b>Standard Output Power</b>	TL-S90W: 90W/18V (two included)
<b>Power Interface</b>	Power/Voltage: 90W/18V Integrated Bracket & Smart Controller, Solar Module and Smart Battery

BATTERY	
<b>Battery</b>	26Ah Lithium x 3
<b>Capacity</b>	900 Wh
<b>Working Voltage</b>	9~12.6V
<b>Working Current</b>	10A Max
<b>Operating Temperatures</b>	-30°C to 60°C (-22°F to 140°F)

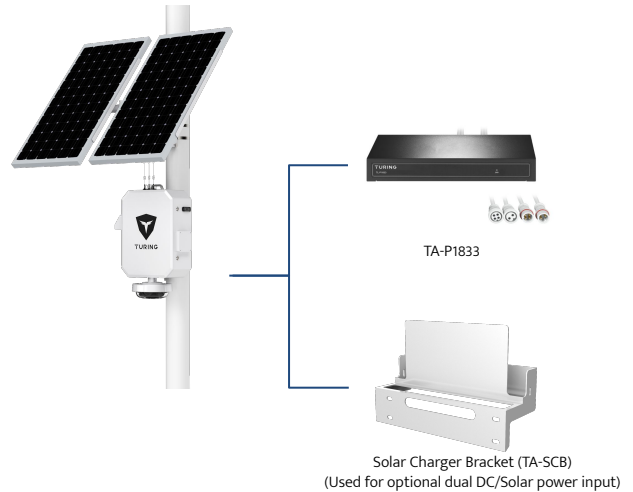
Heat	
<b>Heat</b>	Smart battery module, supports intelligent auxiliary heating, adapts to extreme cold weather

NETWORK(Cellular)	
<b>Standard and Band</b>	LTE FDD: B1/B3/B5/B7/B8/B20/B28 B1/B2/B3/B4/B5/B7/B8/B28 (Optional), B2/B4/B5/B12/B13/B17/B66/B71 (Optional) LTE TDD: B38/B39/B40/B41 HSPA+/HSUPA/HSDPA/WCDMA/UMTS 2100/1900/900/850MHz EV-DO: BC0 CDMA 1x: BC0 EDGE/GPRS/GSM 850/900/1800/1900MHz Cellular: 2 * Standard SMA female antenna interface, characteristic impedance: 50 Ω
<b>Antenna Interface</b>	
<b>SIM/UIM Slot</b>	Standard drawer-type user card interface

NETWORK(POE SWITCH)	
<b>Ports</b>	2*10/100Base-TX RJ45 ports (Data) 4*10/100Base-TX PoE ports (Data/Power)
<b>Max Power Per Port</b>	30W, IEEE802.3af/at
<b>Power Consumption</b>	Standby:<3W, Full load:af<60W, at<120W

## OPTIONAL ACCESSORIES

\*not included, order separately  
With TA-P1833 and TA-SCB, user can use AC110-240 input as alternative power input and build up a Hybrid Solution

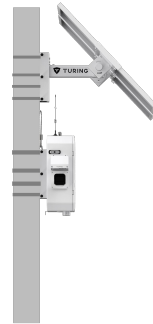


# Mount Options / Typical Application

LS-KG2-B4A-3Y

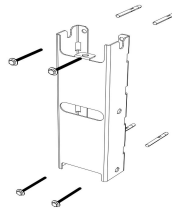
## MOUNT OPTIONS Pole Mount

3.9 into 11.8 in dia Stainless Steel Adjustable Clamp x4 (Included)



## MOUNT OPTIONS Wall Mount

M8 x 80  
(Not included in Product)



## Typical Application

Turing products are classified into three levels according to their anti-corrosion performance. Refer to the following description to choose for your using environment.

This model has NO SPECIFIC PROTECTION

Level	Description
<b>Top-level protection</b>	Turing products at this level are equipped for use in areas where professional anti-corrosion protection is a must. Typical application scenarios include coastlines, docks, chemical plants, and more
<b>Moderate protection</b>	Turing products at this level are equipped for use in areas with moderate anti-corrosion demands. Typical application scenarios include coastal areas about 1 mile away from coastlines, as well as areas affected by acid rain.
<b>No specific protection</b>	Turing products at this level are equipped for use in areas where no specific anti-corrosion protection is needed