

RCI Switches



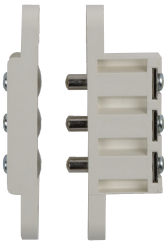
9500/9501 Mortise Pin Transfers

1/2"W x 2-3/4"H (13mm x 71mm)



Warranty
5 Year Limited Warranty

9500
2 Pin



9501
3 Pin

- Recessed in the hinge side of the door/frame and concealed when the door is closed for tamper-resistance
- 1.5A at 24VAC
- Made of nickel-plated brass and plastic
- White finish

How To Order

Type	
0	-2 Pin Contact
1	-3 Pin Contact
950	



9503/9505 Ball Transfers

1/2"W x 2-3/4"H (13mm x 71mm)



Warranty
5 Year Limited Warranty

9503
Mortise



9505
Surface

- Recessed or surface-mounted on either hinge side, lock side or frame header. Recessed models are concealed when the door is closed for tamper-resistance
- 500mA at 24VAC
- Contact pins are hard gold-plated (corrosion-free)
- White finish

How To Order

Type	
3	-Mortise
5	-Surface
950	



9507/9509 Flex Loops



Warranty
2 Year Limited Warranty

9507

- Surface-mounted on hinge side
- Accepts 4-conductor @ 22 gauge or 2-conductor @ 18 gauge (not included)
- Made of stainless steel coated brass
- Available in Silver, Brown and White finish

9509

- Surface-mounted on hinge side
- Heavy-duty flex loop with increased conductor capacity
- Accepts 16-conductor @ 22 gauge or 8-conductor @ 18 gauge (not included)
- Made of stainless steel
- Silver finish

How To Order

Type		Finish	
Standard	7	Silver ¹	S
Heavy-Duty	9	Brown	B
		White	W
950			
	7" (178mm)	7	
	12" (305mm)	12	
	18" (457mm)	18	
	24" (610mm)	24	
	36" (914mm)	36	

Length

¹9509 available in Silver only



9520/9521/9522 9523/9524 Electrified Hinges

- 9520** 4" x 4" (102mm x 102mm)
- 9521** 4-1/2" x 4" (114mm x 102mm)
- 9522** 4-1/2" x 4-1/2" (114mm x 114mm)
- 9523** 5" x 4-1/2" (127mm x 114mm)
- 9524** 5" x 5" (127 mm x 127mm)



Warranty
3 Year Limited Warranty

- Five knuckle
- Standard weight
- Fully mortised in the hinge stile and concealed when the door is closed for tamper-resistance
- Made of steel
- 6-conductors (4 at @ 22 gauge, 2 @ 18 gauge) included
- Available in Brushed Chrome (26D) or Brushed Stainless Steel (32D) finish

How To Order

Size	
0	-4" x 4" (102mm x 102mm)
1	-4-1/2" x 4" (114mm x 102mm)
2	-4-1/2" x 4-1/2" (114mm x 114mm)
3	-5" x 4-1/2" (127mm x 114mm)
4	-5" x 5" (127 mm x 127mm)
952	x
	Brushed Chrome - 26D
	Brushed Stainless Steel - 32D

Finish