

Q&A

WHERE CAN I INSTALL THE PR10?

Mount either directly on-wall, or free-standing with the optional feet provided.

WHAT ARE THE DIMENSIONS?

Inside: H 9.9" / W 10.2" / D 6"

Outside: H 10.8" / W 10.6" / D 6.6"

Outside (with Feet): H 12.1" / W 10.6" / D 6.6"

WHAT KEYSTONES ARE COMPATIBLE WITH THIS ENCLOSURE?

All industry standard keystone jacks are compatible.

WHAT MODELS ARE AVAILABLE?

Part #	Part Name	Description
125-1965	PR10K	PR10 Brownfield Media Panel w/ Mounting Clips, Feet
125-2073	PR10K-L	PR10 Brownfield Media Panel w/ Mounting Clips, Feet & Hex Lock

HOW DO I INSTALL THE PR10?

- Installation video [HERE](#)
- Installation instruction sheet [HERE](#)



WHAT IS INCLUDED IN THE BOX?

- x2 Cable Management clips & screws.
- x4 Mounting screws.
- x4 Wall anchors
- *Hex lock for 125-2073 version
- QR sticker to scan installation instructions.

HOW MUCH WEIGHT DOES THIS ENCLOSURE SUPPORT?

The maximum loading rating is 6.25lbs on-wall.

DO I NEED TO INSTALL THE FEET?

The feet are designed for free-standing installation and for increased airflow.

ARE THERE OTHER COLORS?

Currently the PR10 is only available in white.

CAN I PAINT THE LID?

Yes, the PR10 lid is paintable.



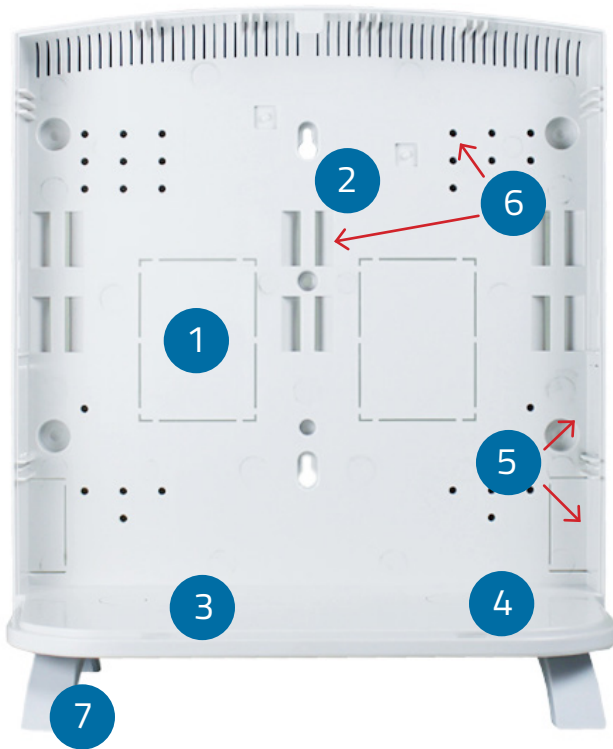
FOR MORE INFORMATION CONTACT:

📞 1.604.881.7875 📠 1.604.881.7835

www.primex.com     

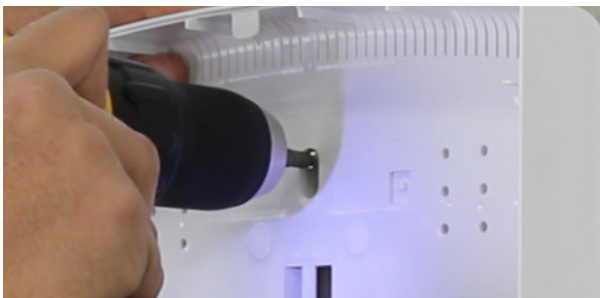
primex 

Design Overview of PR10



1. ELECTRICAL GANGBOX KNOCKOUT

2. KEYHOLE WALL MOUNTS



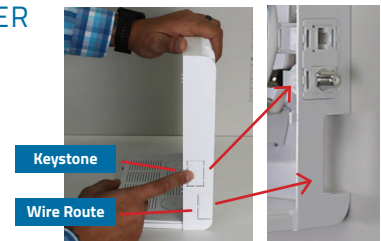
3. MODEM PLACEMENT LOCATION



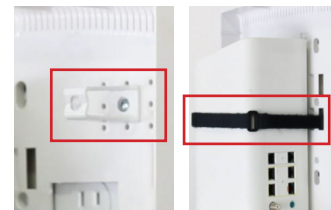
4. BASE POWER WIRE ROUTING KNOCKOUT OPTION



5. KEYSTONE ADAPTER & RACEWAY/WIRE ROUTING KNOCKOUT LOCATIONS



6. MOUNTING STRAP & CABLE MANAGEMENT CLIP LOCATIONS



7. OPTIONAL FREESTANDING FEET MOUNTING LOCATIONS



FOR MORE INFORMATION CONTACT:

1.604.881.7875 1.604.881.7835

www.primex.com     