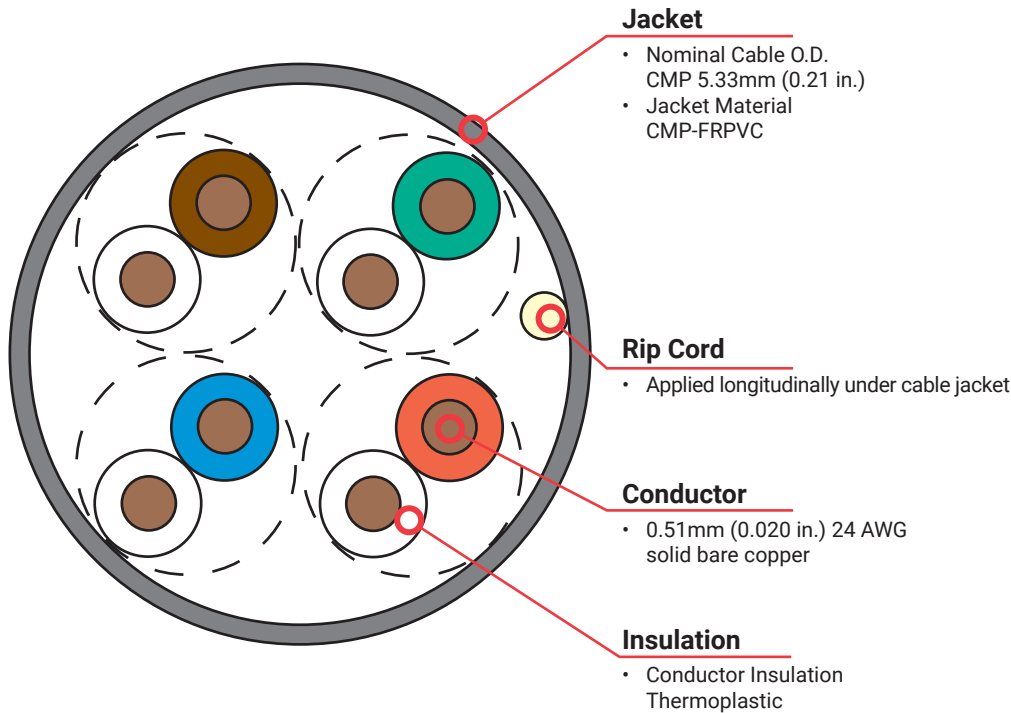


# Solution 5e™ UTP Cable

Regional Availability - North America

Siemon Solution 5e UTP cable perfectly complements the performance of our category 5e outlets. Siemon cable meets or exceeds all ANSI/TIA and ISO/IEC requirements for category 5e transmission performance.



## Construction

- Reverse sequential numbering
- Round jacket
- Jacket material is lead free

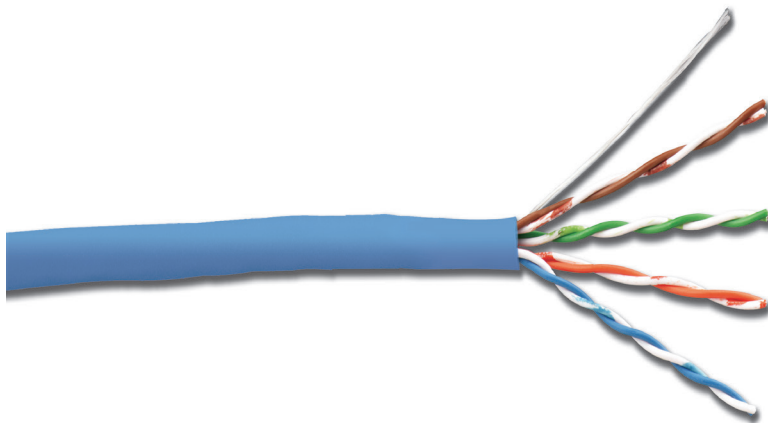
## Standards Compliance

- IEC 61156-5
- ISO/IEC 11801 Ed 2.2
- ANSI/TIA-568.2-E
- RoHS Compliant
- EN 55024
- EN 50173

## Ethernet Applications Support

- 1000BASE-T
- 100BASE-T
- 10BASE-T

*Supports any application designed for category 5e or lower cabling*



# Product Information

## Electrical Specifications

DC Resistance	≤9.38 Ω/100m
DC Resistance Unbalance	≤5%
Mutual Capacitance	5.6 nF/100m
Capacitance Unbalance	<330 pF/100m
Characteristic Impedance (ohms)	1-100 MHz: 100 ± 15% 100-350 MHz: 100 ± 22%
NVP	CMP-66%
Delay Skew	≤45ns

## Physical Properties

Pulling Tension (max)	110N (25 lbf)
Bend Radius (min)	25.4mm (1.0 in.)
Installation Temperature	0 to 50°C (+32 to 122°F)
Storage Temperature	-20 to 75°C (-4 to 167°F)
Operating Temperature	-20 to 75°C (-4 to 167°F)

## TRANSMISSION PERFORMANCE

Siemon Guaranteed Worst Case      Siemon Typical

### FREQUENCY (MHz)

TEST PARAMETER	1.0	4.0	10.0	16.0	20.0	31.25	62.5	100.0	160.0	200.0	250.0	300.0	350.0
INSERTION LOSS (dB)	2.0	4.0	6.4	8.1	9.2	11.7	17.0	22.0	-	-	-	-	-
	1.96	3.8	6.1	7.7	8.7	11.0	15.8	20.4	26.5	30.1	34.2	37.9	41.5
NEXT (dB)	65.3	56.5	50.4	47.4	45.9	42.9	38.4	35.3	-	-	-	-	-
	78.5	78.1	66.9	64.3	63.8	54.9	57.6	52.9	44.0	48.8	48.8	45.9	43.0
PS NEXT (dB)	62.3	53.5	47.4	44.4	42.9	39.9	35.4	32.3	-	-	-	-	-
	81.8	75.6	70.8	62.4	60.9	53.8	54.9	50.2	50.5	46.9	45.3	44.9	43.5
ACR-F (dB)	63.8	52.1	43.9	39.9	37.9	34.0	27.9	23.8	-	-	-	-	-
	96.0	85.2	77.6	70.3	68.5	74.0	54.5	49.5	36.0	39.3	23.8	26.3	16.8
PS ACR-F (dB)	60.8	49.1	40.9	36.9	34.9	31.0	24.9	20.8	-	-	-	-	-
	82.2	74.9	67.5	59.3	57.0	55.1	44.5	39.7	28.5	24.8	15.4	10.5	5.8
RETURN LOSS (dB)	20.0	22.9	25.0	25.0	25.0	23.7	21.5	20.1	-	-	-	-	-
	31.7	32.6	34.7	35.5	32.1	31.5	35.4	30.4	26.9	30.1	35.2	29.8	26.8
ACR-N (dB)	63.3	52.6	43.9	39.3	36.7	31.2	21.4	13.3	-	-	-	-	-
	76.6	74.4	60.8	56.6	55.1	43.9	41.8	32.5	17.5	18.7	14.7	7.9	1.5
PS ACR-N (dB)	60.3	49.6	40.9	36.3	33.7	28.2	18.4	10.3	-	-	-	-	-
	79.8	71.8	64.7	54.7	52.2	42.8	39.0	29.8	24.0	16.8	11.1	6.9	2.0
PROPAGATION DELAY (ns)	570	552	545	543	542	540	539	538	-	-	-	-	-
	549	532	525	523	522	520	518	517	516	516	516	516	515

All performance based on 100 meters (328 ft.). \*Values above 350 MHz are informational only.

## Solution 5e Plenum 4-Pair UTP Cable (CMP, CSA Type FT6)

9C5P4-E1-(XX)-RXA      Plenum, 1000 ft. Reelex

Use (XX) to specify jacket color: 02 = white, 06 = blue

Other colors, available upon request, may have extended lead times and minimum purchase requirements.



SCAN TO DOWNLOAD SPEC SHEET

Because we continuously improve our products, Siemon reserves the right to change specifications and availability without prior notice.

**North America**  
P: (1) 860 945 4200

**Mexico**  
P: (521) 556 387 7708/09/10

**Latin America**  
P: (571) 657 1950/51/52

**Europe**  
P: (44) 0 1932 571771

**Asia Pacific**  
P: (61) 2 8977 7500

**Siemon OEM Technologies**  
P: (1) 860 945 4213  
www.siemon.com/OEM

**China**  
P: (86) 215385 0303

**India, Middle East & Africa**  
P: (971) 4 3689743