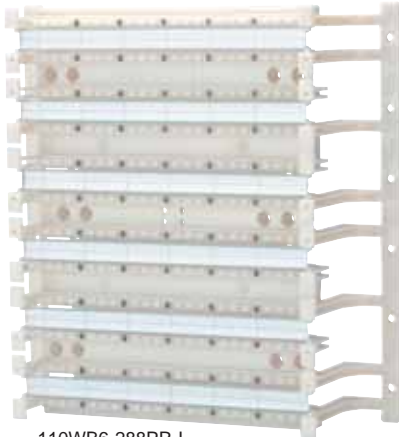




Category 6+ 110 Wiring Blocks

For high speed cross-connect applications, Signamax provides a number of efficient solutions. Category 6+ Wiring Blocks accommodate a range of conductor sizes from 22 to 26 AWG solid or stranded cable and are designed to exceed TIA/EIA-568-B.2-1 Category 6 component level specifications. Available in 48- (50), 96- (100), and 288- (300) pair sizes, they can be configured to build a cross connect system for any size or application. Wiring blocks can be ordered with mounting legs for routing cable behind the block, or without legs where space is limited.



110WB6-288PR-L



110WB6-48PR-L



110WB6-96PR-L

Category 6+ 110 Wiring Blocks

PART NO.	DESCRIPTION
110WB6-48PR-L	Category 6+ 48-Pair 110 Wiring Block With Mounting Legs
110WB6-48PR	Category 6+ 48-Pair 110 Wiring Block Without Mounting Legs
110WB6-96PR-L	Category 6+ 96-Pair 110 Wiring Block With Mounting Legs
110WB6-96PR	Category 6+ 96-Pair 110 Wiring Block Without Mounting Legs
110WB6-288PR-L	Category 6+ 288-Pair 110 Wiring Block With Mounting Legs
110WB6-288PR	Category 6+ 288-Pair 110 Wiring Block Without Mounting Legs

Category 6+ 110 IDC Connecting Clips

Category 6+ Connecting Clips will accept 22-26 AWG solid or stranded conductors and is available in a 4-pair size. IDC connecting block is color coded for easy conductor placement. Connecting blocks are sold in packages of 10.

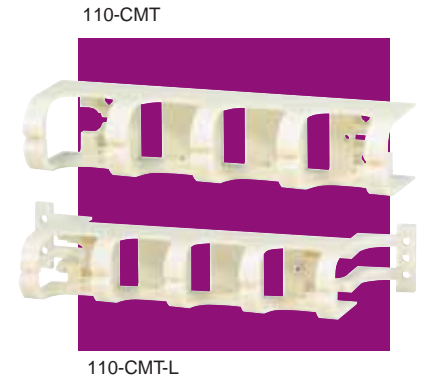
PART NO.	DESCRIPTION
110CB6-4PR	Category 6+ 4-Pair 110 IDC Connecting Clip



Patch Cord and Cable Management Troughs

Used between wiring blocks, cable management trough provide jumper and patch cord organization. Troughs are available with or without stand-off legs to match installation requirements. Cable management troughs rings feature a split ring design which facilitates easy insertion and maximum retention.

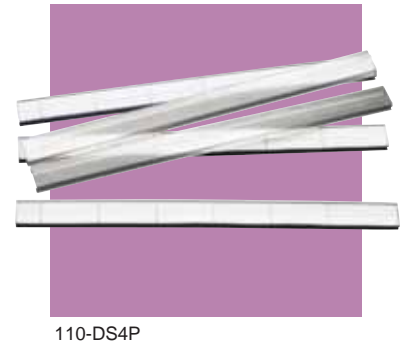
PART NO.	DESCRIPTION
110-CMT-L	Patch Cord and Cable Mgmt. Trough with Mounting Legs
110-CMT	Patch Cord and Cable Mgmt. Trough without Mounting Legs
110-RMCMT	Rack Mount Patch Cord and Cable Mgt. Trough, 1.75"H



Designation Strips

Designation strips are inserted between rows of contacts on wiring blocks and offer a means of identifying individual station ports. A clear label holder is included with each strip to protect information from wear. Designation strips are supplied in a package of 6.

PART NO.	DESCRIPTION
110-DS4P	Designation Strip for (6) 4-Pair and (1) 5-Pair Blocks



Category 6+ 110 Field Installable Patch Cord Plugs

Category 6+ Field Installable Patch Cord Plug is available in a 4-pair size and accommodate 24 to 26 AWG stranded jacketed cable. The plug easily assembled in the field to provide the flexibility and quick termination of any length patch cord. The snap together designed plugs are polarized to ensure a proper connection to the connecting blocks.

PART NO.	DESCRIPTION
1106-4PRP	Category 6+ 4-Pair 110 Field Installable Patch Cord Plug



Category 5e+ 110 Field Installable Patch Cord Plugs

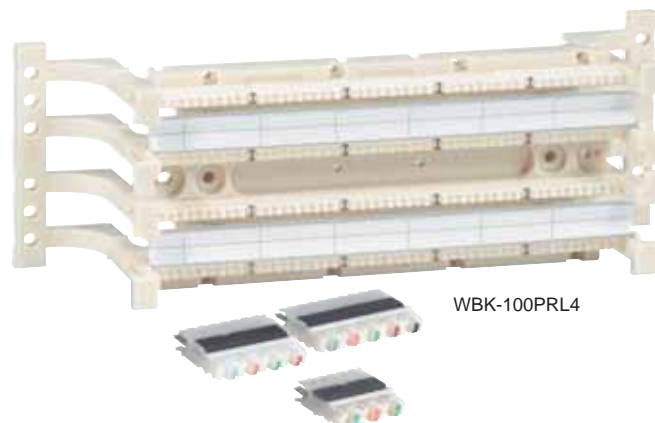
Category 5e+ Field Installable Patch Cord Plugs are available in 1, 2, 3, and 4-pair sizes and accommodate 24 to 26 AWG stranded jacketed cable. Plugs are easily assembled in the field to provide the flexibility and quick termination of any length patch cord. The snap together designed plugs are polarized to ensure a proper connection to the connecting blocks.

PART NO.	DESCRIPTION
110-1PRP	Category 5e+ 1-Pair 110 Field Installable Patch Cord Plug
110-2PRP	Category 5e+ 2-Pair 110 Field Installable Patch Cord Plug
110-3PRP	Category 5e+ 3-Pair 110 Field Installable Patch Cord Plug
110-4PRP	Category 5e+ 4-Pair 110 Field Installable Patch Cord Plug



Category 6+ and 5e+ 110 Wiring Block Kits

Simplified ordering is facilitated by the use of Signamax Category 6+ and 5e+ 110 Cross Connect Wiring Block Kits. Category 6+ kits are available in 48-, 96-, and 288-pair sizes with 4-pair connecting clips. Category 5e+ kits are available in 50-, 100-, and 300-pair with 4-pair connecting clips. These kits include everything needed to assemble a fully configured cross connect field. Wiring block kits are available with or without mounting legs and are packaged with the appropriate number of designation labels and clear holders.



Category 6+ 110 Wiring Block Kits

PART NO.	DESCRIPTION
WBK6-48PRL4	48-Pair Kit w/Mounting Legs, (12) 4-Pair Connecting Clips & 1 Designation Label/Clear Holders
WBK6-48PR4	48-Pair Kit w/o Mounting Legs, (12) 4-Pair Connecting Clips & 1 Designation Label/Clear Holders
WBK6-96PRL4	96-Pair Kit w/Mounting Legs, (24) 4-Pair Connecting Clips & 2 Designation Labels/Clear Holders
WBK6-96PR4	96-Pair Kit w/o Mounting Legs, (24) 4-Pair Connecting Clips & 2 Designation Labels/Clear Holders
WBK6-288PRL4	288-Pair Kit w/Mounting Legs, (72) 4-Pair Connecting Clips & 3 Designation Labels/Clear Holders
WBK6-288PR4	288-Pair Kit w/o Mounting Legs, (72) 4-Pair Connecting Clips & 3 Designation Labels/Clear Holders

Category 5e+ 110 Wiring Block Kits

PART NO.	DESCRIPTION
WBK-50PRL4	50-Pair Kit w/Mounting Legs, (10) 4-Pair, (2) 5-Pair Connecting Clips & 1 Designation Label/Clear Holders
WBK-50PR4	50-Pair Kit w/o Mounting Legs, (10) 4-Pair, (2) 5-Pair Connecting Clips & 1 Designation Label/Clear Holders
WBK-100PRL4	100-Pair Kit w/Mounting Legs, (20) 4-Pair, (4) 5-Pair Connecting Clips & 2 Designation Labels/Clear Holders
WBK-100PR4	100-Pair Kit w/o Mounting Legs, (20) 4-Pair, (4) 5-Pair Connecting Clips & 2 Designation Labels/Clear Holders
WBK-300PRL4	300-Pair Kit w/Mounting Legs, (60) 4-Pair, (12) 5-Pair Connecting Clips & 3 Designation Labels/Clear Holders
WBK-300PR4	300-Pair Kit w/o Mounting Legs, (60) 4-Pair, (12) 5-Pair Connecting Clips & 3 Designation Labels/Clear Holders

Kits can be specified with 3 or 5-pair connecting clips.

Category 6+ and 5e+ Rack Mount Wiring Blocks

110 Blocks are available for 19" rack mounting in both Category 6+ and 5e+ versions. Category 5e+ Panels are available in 100-, and 200 configurations with or without connecting clips. The Category 6+ panels are available in 96- and 192-pair configurations with or without connecting clips. Patch cord management is provided by a rack mount patch cord and cable management trough (sold separately).

Category 5e+ 110 Rack Mount Wiring Block Kits

PART NO.	DESCRIPTION
RM100PR	100-Pair 110 Rack Mount Wiring Blocks, 1.75"H x 19"W
RM200PR	200-Pair 110 Rack Mount Wiring Blocks, 3.50"H x 19"W
RWBK-100PR4	100-Pair Rack Mount Kit w/(20) 4-Pair, (4) 5-Pair Connecting Clips & 2 Designation Labels/Clear Holders
RWBK-200PR4	200-Pair Rack Mount Kit w/(40) 4-Pair, (6) 5-Pair Connecting Clips & 4 Designation Labels/Clear Holders

Kits can be specified with 3 or 5-pair connecting clips.

Category 6+ 110 Rack Mount Wiring Block Kits

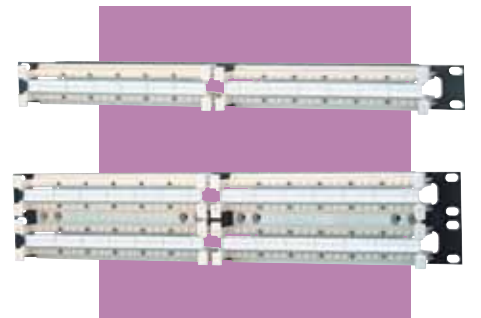
PART NO.	DESCRIPTION
RM696PR	96-Pair 110 Rack Mount Wiring Blocks, 1.75"H x 19"W
RM6192PR	192-Pair 110 Rack Mount Wiring Blocks, 3.50"H x 19"W
RWBK6-96PR4	96-Pair Rack Mount Kit w/(24) 4-Pair Connecting Clips & 2 Designation Labels/Clear Holders
RWBK6-198PR4	192-Pair Rack Mount Kit w/(48) 4-Pair Connecting Clips & 4 Designation Labels/Clear Holders

RM100PR



RM200PR

RM696PR



RM6192PR

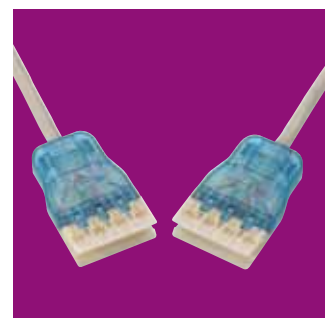
Category 6+ 110 Patch Cords

Category 6+ 110 Patch Cords exceed performance specifications as defined in TIA/EIA-568-B-2.1. Patch cords are available with four pair 110 plugs and are used for patching between Category 6 110 termination fields. Category 6+ RJ-45/110 Patch Cords are available in four-pair configurations wired to T568B specifications. RJ-45/110 Patch Cords are used for patching between equipment and Category 6 110 termination fields. All cords are 100% factory performance tested.

Category 6+ 110 Patch Cords

PART NO.	DESCRIPTION
C6C-4P-GY-LB	Category 6+ 4-Pair 110 Patch Cords, Gray Cable
C6C-4P-458B-GY-LB	Category 6+ RJ-45 / 4-Pair 110 Patch Cords, Gray Cable

*For standard lengths substitute L for length in P/N.
3=3 ft. 5=5 ft. 7=7 ft. 10=10 ft. 14=14 ft. 25=25 ft.
Other lengths and colors are available.*



C6C-4P-GY-LB



C6C-4P-458B-GY-LB

Category 5e+ 110 Patch Cords

Category 5e+ 110 Patch Cords are assembled using stranded cable that exceeds Category 5 Enhanced specifications. Patch cords are available with one, two, three, and four pair 110 plugs and are used for patching between 110 termination fields. All cords are 100% factory tested.

Category 5e+ RJ-45/110 Patch Cords are available in four-pair configurations wired for either T568B or T568A specifications. RJ-45/110 Patch Cords are used for patching between equipment and 110 termination fields. One, two and three-pair to four and six position plugs are also available for special applications. All cords are 100% factory tested. Standard cable color is gray.

Category 5e+ 110 Patch Cords

PART NO.	DESCRIPTION
C5E-1P-GY-LB	Category 5e+ 1-Pair 110 Patch Cords, Gray Cable
C5E-2P-GY-LB	Category 5e+ 2-Pair 110 Patch Cords, Gray Cable
C5E-3P-GY-LB	Category 5e+ 3-Pair 110 Patch Cords, Gray Cable
C5E-4P-GY-LB	Category 5e+ 4-Pair 110 Patch Cords, Gray Cable
C5E-4P-458B-GY-LB	Category 5e+ RJ-45 / 4-Pair 110 Patch Cords, Gray Cable

For standard lengths substitute L for length in P/N.
3=3 ft. 5=5 ft. 7=7 ft. 10=10 ft. 14=14 ft. 25=25 ft.
Other lengths and colors are available.



C5E-4P-GY-LB



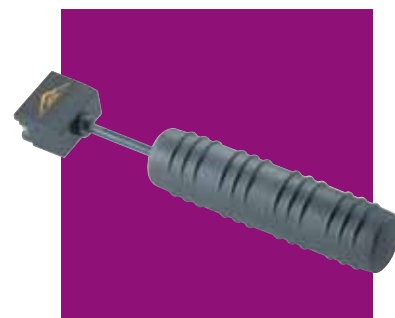
C5E-4P-GY-LB

Termination Tools

Signamax multi-pair termination tools are a versatile impact tool designed to terminate and cut UTP cable and seat connecting clips. The tools feature an ergonomically designed handle to provide a no-slip grip. Our single position impact tools are available to terminate to either 66 or 110 clips and are spring-loaded and tension-adjustable. Replacement blades are available.

110 Termination Tools

PART NO.	DESCRIPTION
1106-4PRT	4-Pair Impact Tool for 4-Pair Category 6 110 Connecting Clips
110-5PRT	5-Pair Impact Tool for Category 5e 110 Connecting Clips
1106-4PRH	4-Pair 110 Impact Tool Replacement Head and Blade
110-5PRH	5-Pair 110 Impact Tool Replacement Head and Blade
T110	1-Position 110 Impact Termination Tool
T66	1-Position 66 Impact Termination Tool
T110BL	1-Position 110 Termination Blade
T66BL	1-Position 66 Termination Blade



110-5PRT



T110