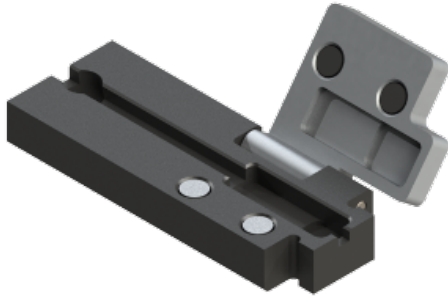


## FXFSSHFM4 Connectivity Accessories - FX FUSION FAM4 SPLICE HOLDER



For more Information  
please call

1-800-Belden1



### General Description:

FiberExpress Fusion FAM4 Splice Holder

### Usage (Overall)

Suitable Applications:	FiberExpress Fusion
Related Parts:	FX Fusion Connectors, FX Fusion Splicer, FX Fusion Tool Kit

### Physical Characteristics (Connectivity)

#### Dimensions

Dimensions:

Height (in.)	Width (in.)	Length (in.)
0.339	0.628	1.630

#### Weight

Weight:	0.030 lbs.
---------	------------

#### Included Parts

Included Parts:	1 Holder (Left Side)
-----------------	----------------------

### Mechanical Characteristics (Connectivity)

Tool Compatibility:	Fitel Splicer S178
---------------------	--------------------

### Applicable Specifications and Agency Compliance (Overall)

#### Applicable Standards & Environmental Programs

EU Directive 2011/65/EU (ROHS II):	Yes
EU Directive 2002/95/EC (RoHS):	Yes
EU RoHS Compliance Date (mm/dd/yyyy):	01/01/2013

#### Suitability

Suitability - Indoor:	Yes - Indoor
-----------------------	--------------

### Notes (Overall)

**Notes:** For additional fusion splicer compatibility information, refer to document AEN-1701 available at [www.belden.com/Splice-on](http://www.belden.com/Splice-on)

### Product Family

Part Number List:

Part Number	Description
FXFSTOPTK	FiberExpress Fusion Precision Tool Kit
FXFSTOSTK	FiberExpress Fusion Standard Tool Kit
FXFSTOPCL	FiberExpress Fusion Precision Cleaver
FXFSTOSCL	FiberExpress Fusion Standard Cleaver
FXFSSHFM1	FiberExpress Fusion FAM1 Splice Holder

## FXFSSHFM4 Connectivity Accessories - FX FUSION FAM4 SPLICE HOLDER

FXFSSHFM2	FiberExpress Fusion FAM2 Splice Holder
FXFSSHFM3	FiberExpress Fusion FAM3 Splice Holder
FXFSTOSLT	FiberExpress Fusion Slitter for Jacketed Fiber
AX100951	Refurbishing Materials (80 alcohol wipes and a black felt tip marker)
AX103151	Fiber-Cable Stripper
AX104278	Tweezers
AX104279	Pen Marker
AX104280	Scissors
AX104281	Waste Bottle
AX104282	Safety Glasses
AX107501	FiberExpress Fusion Installation Card

### Put Ups and Colors:

Item #	Putup	Ship Weight	Color	Notes	Item Desc
--------	-------	-------------	-------	-------	-----------

Revision Number: 0    Revision Date: 07-28-2017

© 2017 Belden, Inc  
All Rights Reserved.

Although Belden makes every reasonable effort to ensure their accuracy at the time of this publication, information and specifications described herein are subject to error or omission and to change without notice, and the listing of such information and specifications does not ensure product availability. Belden provides the information and specifications herein on an "AS IS" basis, with no representations or warranties, whether express, statutory or implied. In no event will Belden be liable for any damages (including consequential, indirect, incidental, special, punitive, or exemplary damages) whatsoever, even if Belden has been advised of the possibility of such damages, whether in an action under contract, negligence or any other theory, arising out of or in connection with the use, or inability to use, the information or specifications described herein. All sales of Belden products are subject to Belden's standard terms and conditions of sale. Belden believes this product to be in compliance with EU RoHS (Directive 2002/95/EC, 27-Jan-2003). Material manufactured prior to the compliance date may be in stock at Belden facilities and in our Distributor's inventory. The information provided in this Product Disclosure, and the identification of materials listed as reportable or restricted within the Product Disclosure, is correct to the best of Belden's knowledge, information, and belief at the date of its publication. The information provided in this Product Disclosure is designed only as a general guide for the safe handling, storage, and any other operation of the product itself or the one that it becomes a part of. This Product Disclosure is not to be considered a warranty or quality specification. Regulatory information is for guidance purposes only. Product users are responsible for determining the applicability of legislation and regulations based on their individual usage of the product.