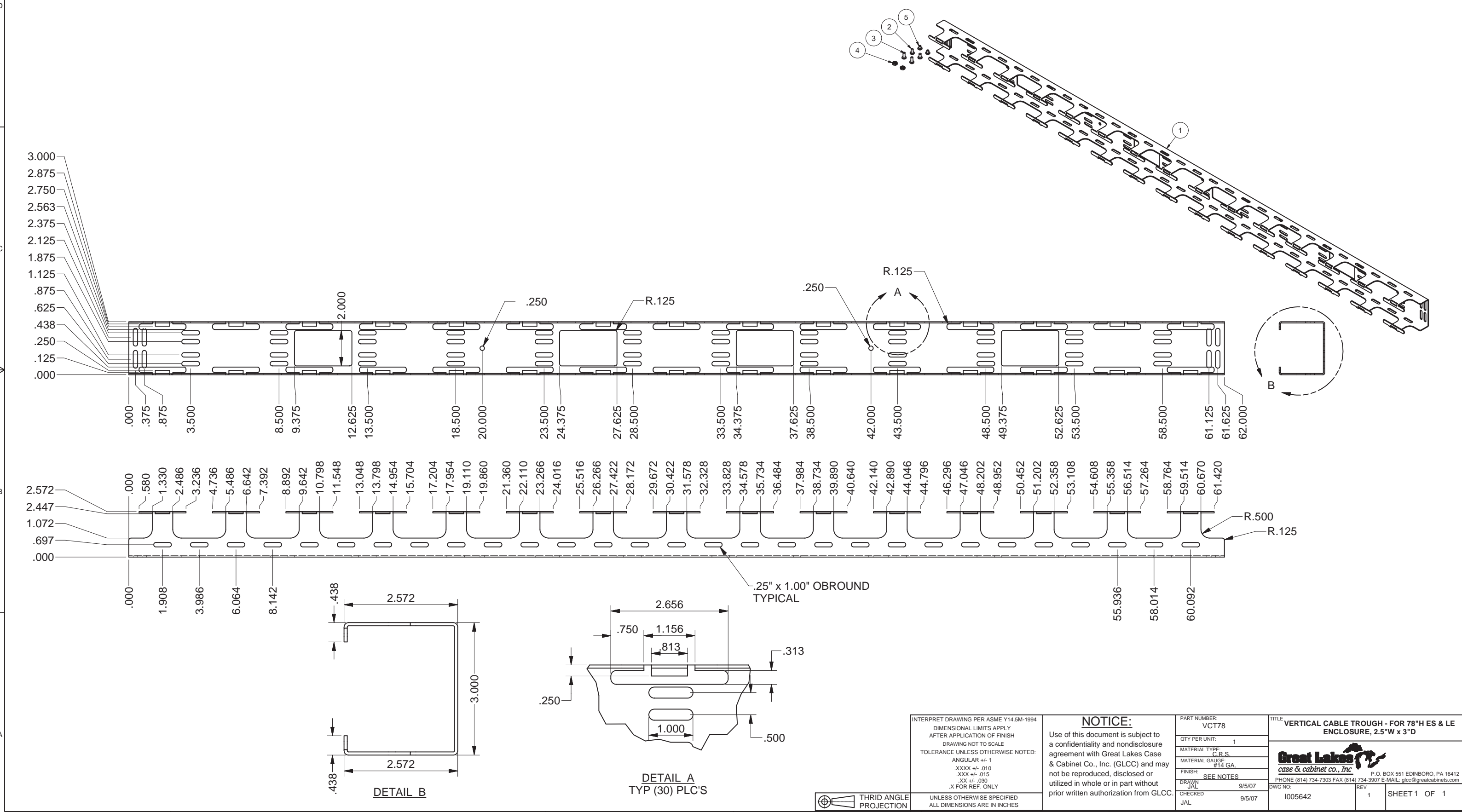


REVISION HISTORY			
REV	DESCRIPTION	DATE	APPROVED
0	ECO-02001	9/6/2007	BillS
1	ECO-02791	2/18/2010	FED

Bill of Material						
ITEM	PART NUMBER	STOCK NUMBER	QTY	DESCRIPTION	FILE NAME	REVISION
1	VCT78X100		1	VERTICAL CABLE TROUGH - FOR 78"H ES & LE ENCLOSURE, 2.5"W x 3"D	I005642.ipt	1
2	H01-068	H01-068	2	SCREW, 10-32x3/8" Ph PAN TYPE 23 BLACK OXIDE/WAX RoHS	SCR10-32X375SC23.ipt	-
3	H01-078	H01-078	2	SCREW, 10-32x1/2" PH PAN TYPE 23 BLACK OXIDE/WAX RoHS	SCR1032X500BLK.ipt	-
4	H02-001	H02-001	2	#10-32 KEPS NUT, ZINC RoHS	10-32NUT.iam	-
5	H01-073	H01-073	2	SCREW, 10-32x1/4 PH PAN TYPE 23 BLACK OXIDE/WAX RoHS (SCR1032X250BLK)	H01-073.ipt	-



INTERPRET DRAWING PER ASME Y14.5M-1994  
 DIMENSIONAL LIMITS APPLY AFTER APPLICATION OF FINISH  
 DRAWING NOT TO SCALE  
 TOLERANCE UNLESS OTHERWISE NOTED:  
 ANGULAR +/- 1  
 .XXXX +/- .010  
 .XXX +/- .015  
 .XX +/- .030  
 .X FOR REF. ONLY  
 UNLESS OTHERWISE SPECIFIED ALL DIMENSIONS ARE IN INCHES

**NOTICE:**  
 Use of this document is subject to a confidentiality and nondisclosure agreement with Great Lakes Case & Cabinet Co., Inc. (GLCC) and may not be reproduced, disclosed or utilized in whole or in part without prior written authorization from GLCC.

PART NUMBER:	VCT78
QTY PER UNIT:	1
MATERIAL TYPE:	C.R.S.
MATERIAL GAUGE:	#14 GA.
FINISH:	SEE NOTES
DRAWN:	JAL 9/5/07
CHECKED:	JAL 9/5/07

TITLE		VERTICAL CABLE TROUGH - FOR 78"H ES & LE ENCLOSURE, 2.5"W x 3"D	
DRAWN		JAL 9/5/07	
CHECKED		JAL 9/5/07	
DWG NO:		I005642	
REV		1	
SHEET		1 OF 1	

Great Lakes Case & Cabinet Co., Inc.  
 P.O. BOX 551 EDINBORO, PA 16412  
 PHONE (814) 734-7303 FAX (814) 734-3907 E-MAIL: glcc@greatcabinets.com

