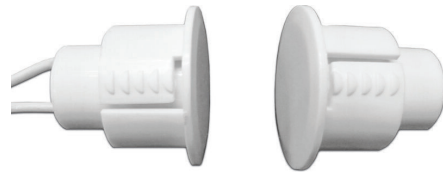


# CX-MDH Magnetic Contact

## INSTALLATION INSTRUCTIONS



### THIS PACKAGE INCLUDES:

- 1 x Contact
- 1 x Magnet

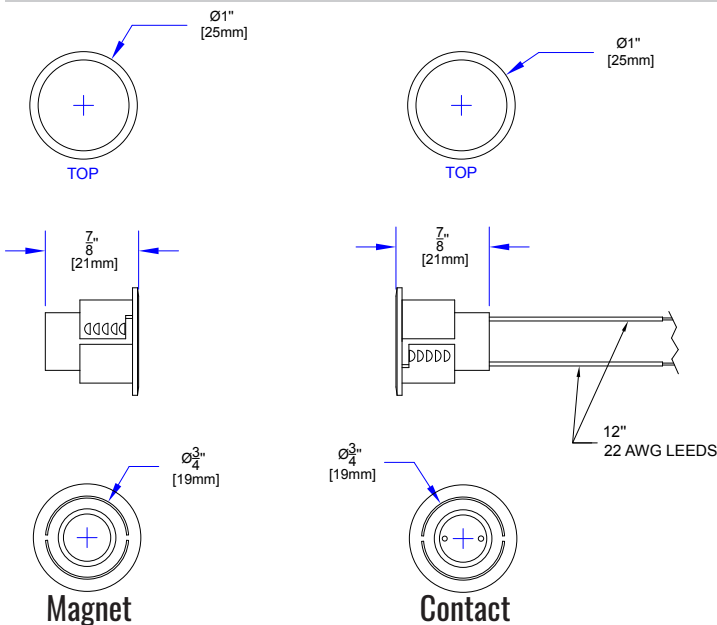
### 1. GENERAL DESCRIPTION

Introducing the CX-MDH Magnetic Contact, a recessed, SPST model designed for enhanced security in residential and commercial settings. With a 1-1/16" (27mm) gap, it accommodates larger door and window movements, ensuring reliable operation. The discreet white finish and recessed design offer seamless integration and added tamper resistance. Engineered for durability and ease of installation, the CX-MDH is a crucial addition to any security system, complementing our range of magnetic contacts with its versatility and dependability.

### 2. SPECIFICATIONS

Model	CX-MDH
Electrical Connection	SPST
Operation Gap	1-1/16" (27mm)
Contact Rating	100VDC/110VAC @ 0.5A
Magnet Type	Ferrite
Dimensions	ø1" x 7/8" (ø25mm x 21mm)

### 3. DIMENSIONS



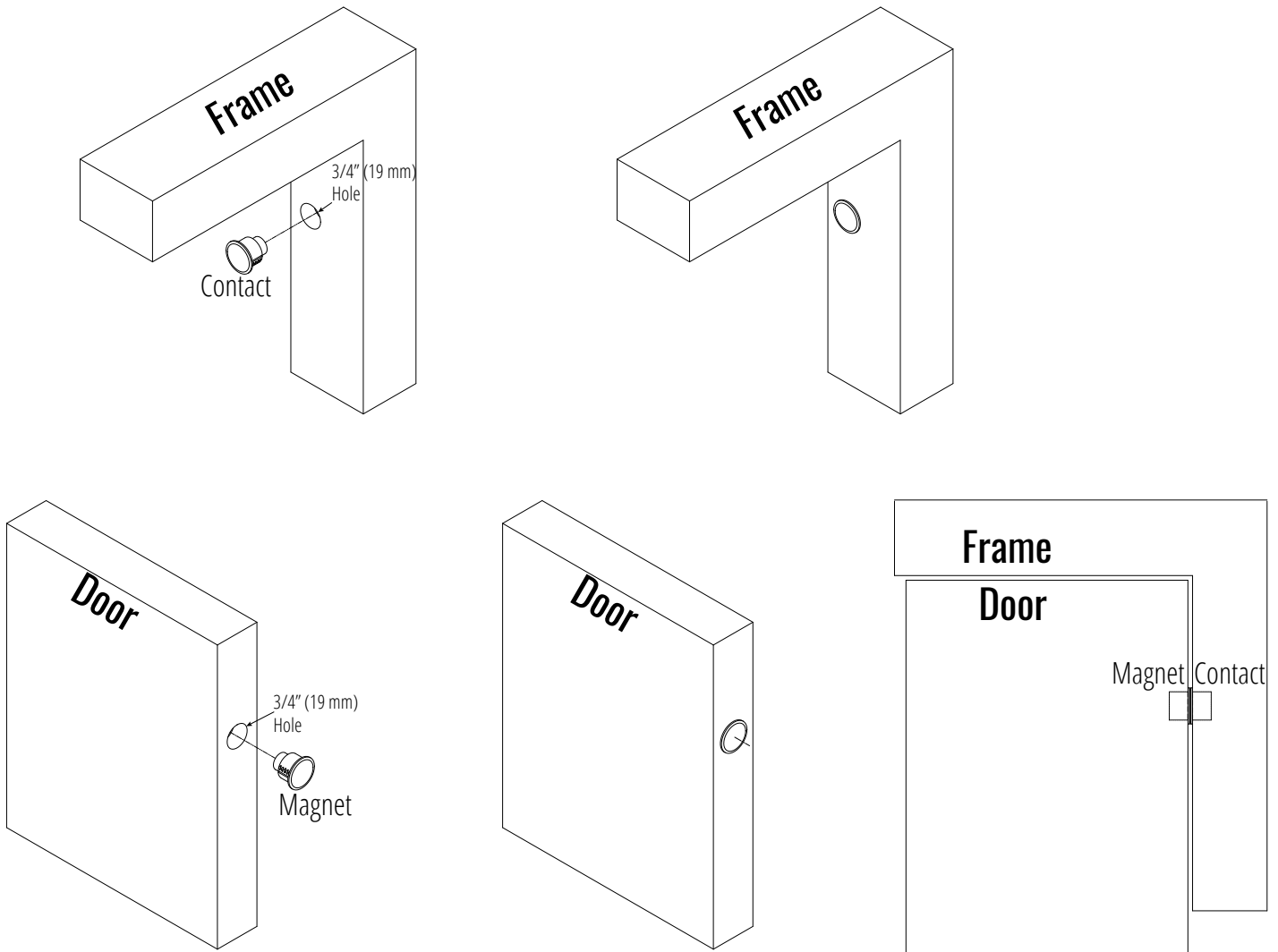
### 4. INSTALLATION

#### CX-MDH:

1. **Wiring Connection:** Start by running the wiring from your monitoring to the intended installation locations on the door frame (for the contact) and on the door itself (for the magnet). Connect the wires to the CX-MDH contact's terminals, ensuring the connections are secure and follow your system's specifications.
2. **Mounting the Contact:**
  - Select the spot on the door frame where the contact will be installed. This location should be strategically chosen to align with the magnet when the door is closed.
  - Use the 3/4" (19mm) drill bit to create a recessed hole in the door frame deep enough to accommodate the contact, ensuring it sits flush with the frame surface.
  - Insert the contact into the drilled hole, making sure the wiring is neatly routed and the contact is securely in place.
3. **Aligning the Magnet:**
  - With the door closed, determine the exact position on the door where the magnet will align with the recessed contact. The alignment is crucial to ensure the contact functions correctly, with the gap between the contact and magnet not exceeding 1-1/16" (27mm).
  - Mark the spot on the door where the magnet will be installed.
4. **Installing the Magnet:**
  - Drill a recessed hole on the door at the marked location using the same 3/4" (19mm) drill bit, ensuring the hole is deep enough for the magnet to sit flush with the door surface.
  - Insert the magnet into the hole.
5. **Final Steps:**
  - After installation, test the door's opening and closing to ensure the contact and magnet align correctly and the security system registers the door's status accurately.
  - Make any necessary adjustments to ensure optimal performance and reliable operation.

# CX-MDH Magnetic Contact

INSTALLATION INSTRUCTIONS



## 6. WIRING/CONNECTION

### Closed Loop

