

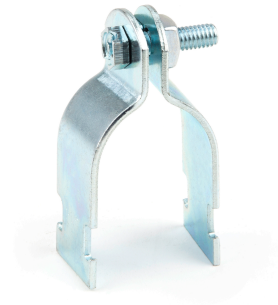
# Product Specifications



## 1-1/4" Universal Strut Clamp

**Part Number** SC125U  
**Category Number** 5391  
**UPC** 781002817109

Universal Strut Clamps are used to secure EMT or rigid conduit to strut channel in overhead or wall mount applications. They come preassembled with a keps nut and are electrogalvanized for superior corrosion resistance.



### Physical Characteristics

Type	Strut Clamp
Style	Universal
EMT Size (in)	1-1/4"
Pipe Size (in)	1-1/4"
Bolt Size	1/4"-20 x 1"
Size	1-1/4"
Connection	Clamp On
Material	Carbon Steel
Finish	Electrogalvanized
Gauge	14

### Packaging Details

Standard Qty	50
Price Per	100
Package Length	8.30
Package Width	5.30
Package Height	5.60
Net Weight	0.192
Package Weight	9.60

### Performance Data

Maximum Load (lb)	600 lbs
Applications	Secures EMT or Rigid Conduit to Strut Channel
Special Features	Designed For EMT/Pipe, Suitable For Use With 12 or 14 Gauge Metal Framing Channel
For Use With	Rigid/EMT Conduit

### Certifications

RoHS Compliant	No
----------------	----