

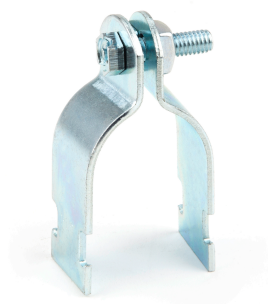
# Product Specifications



## 3-1/2" Rigid Strut Clamp

**Part Number** SC350R  
**Category Number** 5391  
**UPC** 781002817277

Rigid Strut Clamps are used to secure rigid conduit to strut channel in overhead or wall mount applications. They are electrogalvanized for superior corrosion resistance and come preassembled with a keps nut and slotted hex head bolt.



### Physical Characteristics

Type	Strut Clamp
Style	Rigid
Pipe Size (in)	3-1/2"
Bolt Size	3/8"-16 x 1-1/4"
Size	3-1/2"
Connection	Clamp On
Material	Carbon Steel
Finish	Electrogalvanized
Gauge	11

### Performance Data

Maximum Load (lb)	1000 lbs
Applications	Secures Rigid Conduit to Strut Channel
Special Features	Assembled With Keps Nut For Easy Installation, Suitable For Use With 12 or 14 Gauge Metal Framing Channel
For Use With	Rigid Conduit

### Packaging Details

Standard Qty	50
Price Per	100
Package Length	12.60
Package Width	10.20
Package Height	6.10
Net Weight	0.589
Package Weight	29.45

### Certifications

RoHS Compliant	No
----------------	----