

PRIMEX

Product Specifications

900LCCS-50
1-line ADSL/ADSL2+ Filter w/Unfiltered Jack

1. SUMMARY

The Primex Inline Filter/Splitter plugs into a wall jack, and provides separate ports for filtered voice (POTS) and high-speed ADSL data signals.

The Filter/Splitter has two jacks: one (unfiltered) for a DSL modem and another (filtered) for a voice-grade device (phone, fax, answering machine, etc.)

It keeps the voice-grade devices from interfering with the performance of the DSL modem, and keeps noise from the data signal off the voice devices.

2. DIMENSIONS

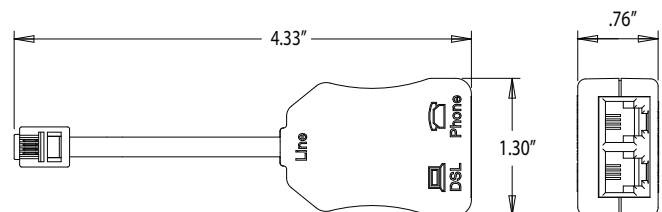
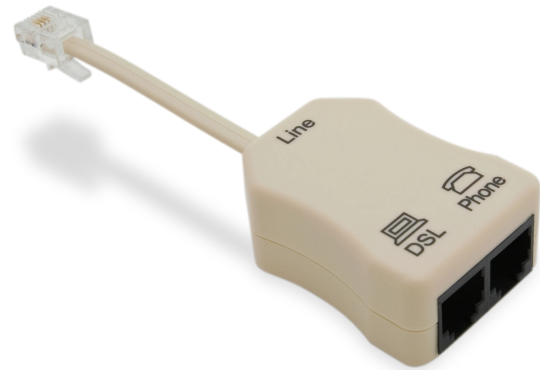
SIZE: 1.30"H x 4.33"W x .76"D

3. FEATURES & BENEFITS

- Compatible with ADSL and ADSL2+
- Complies with Part 68 of the FCC Rules and the requirements adopted by the ACTA
- ANSI T1. 421
- Material is flame retardant thermoplastic compliant with UL 94V-0
- Filter topology: 2-pole low pass
- Contacts (Plug and Jacks) Minimum 50 micro-inch of gold and nickel
- Customer installable

4. CONFIGURATIONS

Part #	Part Name	Description
135-0047	900LCCS-50	1-line inline adapter DSL filter (pins 3&4) w/ auxiliary unfiltered jack, ADSL and ADSL2+ compatible



Specifications

Dielectric Withstand:	1000 VDC for 1 minute
REN:	0.1B (ac)
Series DC Resistance:	20 ohms max. (T to R with telephone port shorted)
Loading Capacity:	16nF (T to R)
DC Loop Current:	Operates from 0 - 90mA
Off-Hook Insertion Loss:	< 0.2dB @ 1KHz
Off-Hook Insertion Loss Distortion:	< 0.5dB (200Hz - 4KHz)
Off-Hook Impedance Distortion:	ERL > 9dB SRL-LO > 13dB SRL-HI > 3dB
Envelope Delay:	< 100 us (300Hz - 2.8kHz)
Stopband Attenuation:	≥ 21dB @ 25kHz - 50kHz ≥ 25dB @ 50kHz - 30MHz



FOR MORE INFORMATION CONTACT:

1.604.881.7875 1.604.881.7835
www.primex.com [f](#) [t](#) [in](#) [v](#) [y](#)

primex  **Fit everything. Together.**