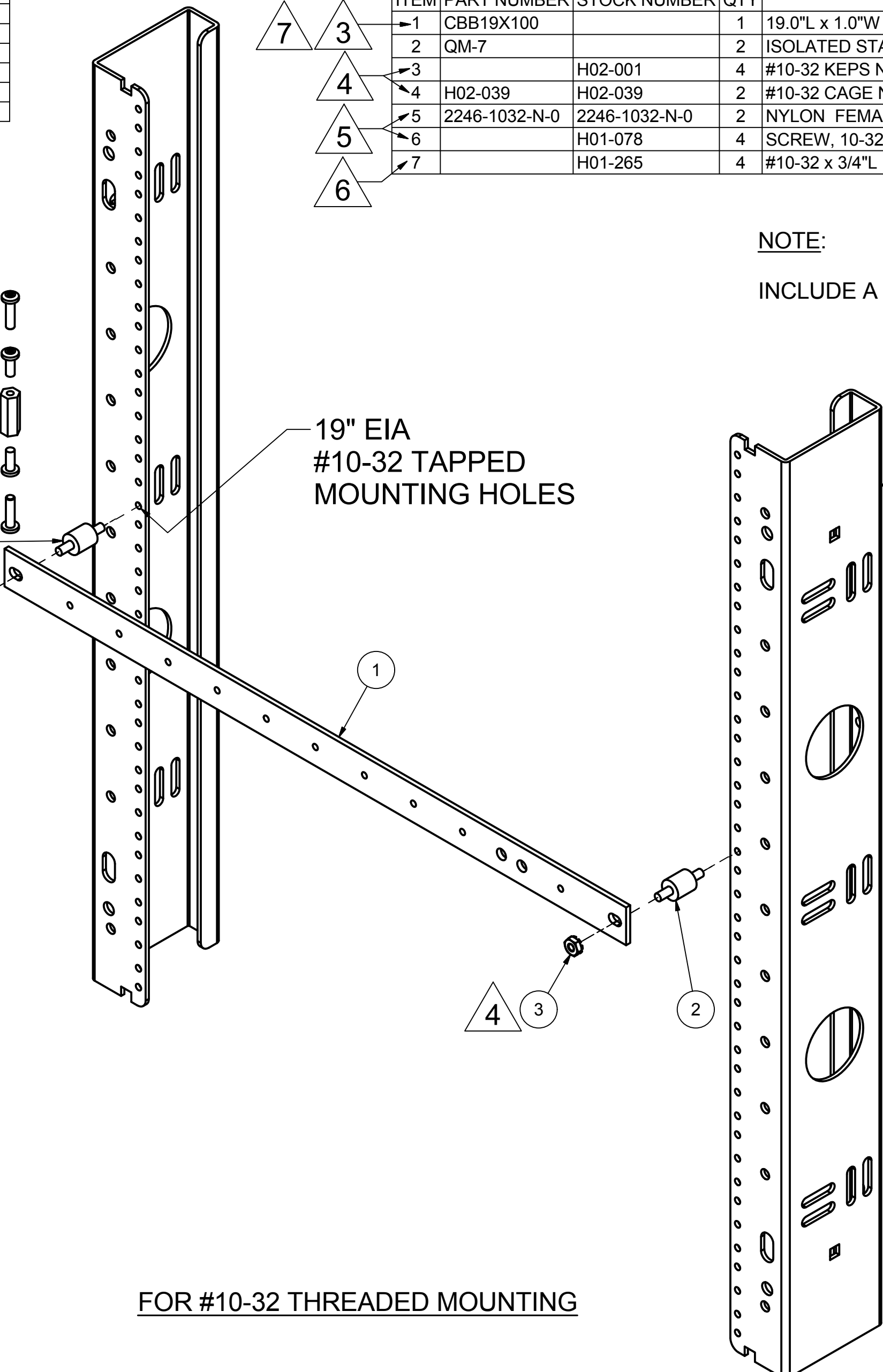
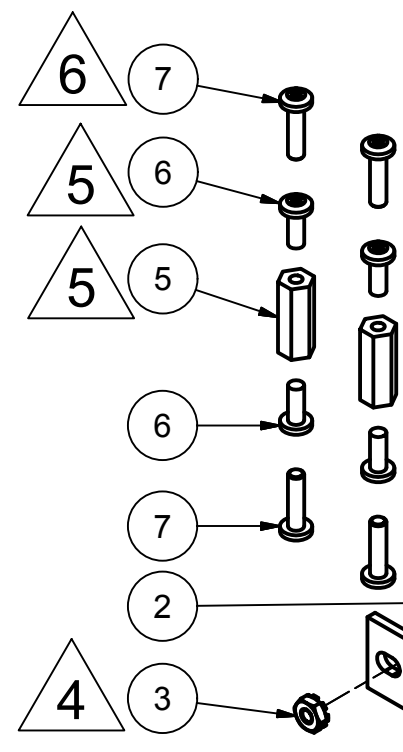


REVISION HISTORY			
REV	DESCRIPTION	DATE	APPROVED
2	ECO-01636	9/13/2005	JL
3	ECO-02431	11/14/2008	CD
4	ECO-06041	10/9/2013	CDM
5	ECO-06247	5/1/2014	TAD
6	ECO-06499	3/9/2015	FED
7	ECO-06702	10/26/2015	VL

Bill of Material									
ITEM	PART NUMBER	STOCK NUMBER	QTY	DESCRIPTION	FILE NAME	REV			
1	CBB19X100		1	19.0"L x 1.0"W COPPER BUS BAR, TAPPED #10-32 - DETAIL	I003461.ipt	8			
2	QM-7		2	ISOLATED STANDOFF - RICHCO QUIET MOUNT	QM7.ipt	-			
3		H02-001	4	#10-32 KEPS NUT, ZINC RoHS	10-32NUT.iam	-			
4	H02-039	H02-039	2	#10-32 CAGE NUT	H02-039.iam	-			
5	2246-1032-N-0	2246-1032-N-0	2	NYLON FEMALE THREADED HEX STANDOFF, NATIONAL PRECISION	2246-1032-N-0.ipt	0			
6		H01-078	4	SCREW, 10-32x1/2" PH PAN TYPE 23 BLACK ZINC RoHS	H01-078.ipt	-			
7		H01-265	4	#10-32 x 3/4"L PAN HEAD PHIL MS, BLACK	H01-265.ipt	-			



NOTE:
INCLUDE A COPY OF THIS DRAWING WITH COMPONENTS.

FOR #10-32 THREADED MOUNTING

EST. WEIGHT :
N/A

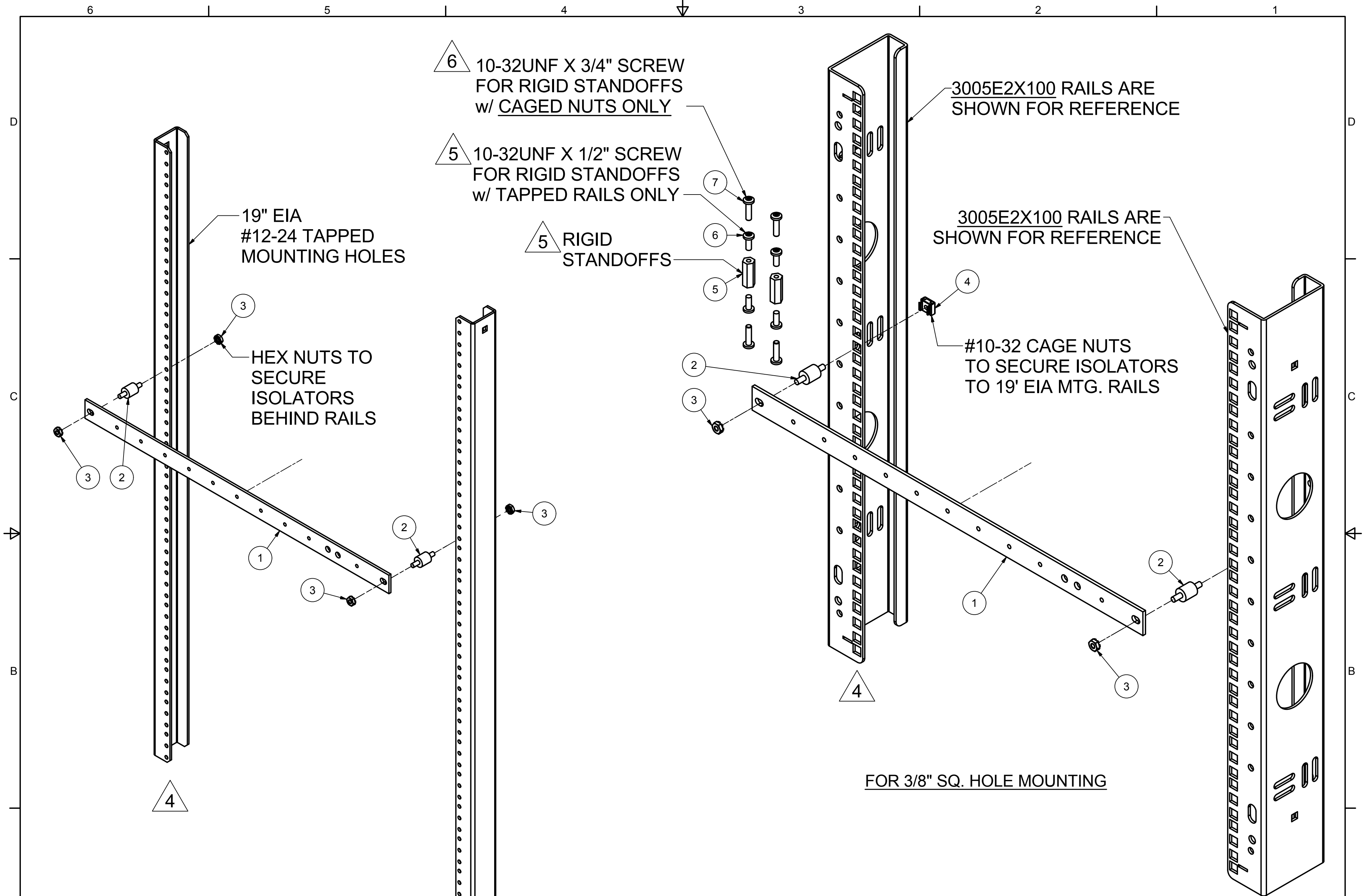


INTERPRET DRAWING PER ASME Y14.5M-1994
DIMENSIONAL LIMITS APPLY AFTER APPLICATION OF FINISH
DRAWING NOT TO SCALE
TOLERANCE UNLESS OTHERWISE NOTED: ANGULAR +/- 1' .XXXX +/- .010 .XXX +/- .015 .XX +/- .030 .X FOR REF. ONLY
UNLESS OTHERWISE SPECIFIED ALL DIMENSIONS ARE IN INCHES

NOTICE:
Use of this document is subject to a confidentiality and nondisclosure agreement with Great Lakes Case & Cabinet Co., Inc. (GLCC) and may not be reproduced, disclosed or utilized in whole or in part without prior written authorization from GLCC.

PART NUMBER: CBB19X200	
QTY PER UNIT: 1	
MATERIAL TYPE: SEE BOM	
MATERIAL GAUGE: SEE DETAILS	
FINISH: STOCK	
DRAWN: Jaye	DATE: 9/9/2005
CHECKED & APP. WSS	DATE: 9-13-05

TITLE 19.0"L x 1.0"W COPPER BUS BAR, TAPPED #10-32 & #12-24 - ASSEMBLY	
GREAT LAKES CASE & CABINET CO., INC. P.O. BOX 551 EDINBORO, PA 16412 PHONE (814) 734-7303 FAX (814) 734-3907 E-MAIL glcc@greatcabinets.com	
DWG NO: 1003460	REV: 7
SHEET: 1 OF 2	



FOR WALL MOUNT TYPE PRODUCTS
OR ALUMINUM 2 POST OR 4 POST RACKS

FOR 3/8" SQ. HOLE MOUNTING

EST. WEIGHT :
N/A



INTERPRET DRAWING PER ASME Y14.5M-1994
DIMENSIONAL LIMITS APPLY AFTER APPLICATION OF FINISH
DRAWING NOT TO SCALE
TOLERANCE UNLESS OTHERWISE NOTED: ANGULAR +/- 1' .XXXX +/- .010 .XXX +/- .015 .XX +/- .030 .X FOR REF. ONLY
UNLESS OTHERWISE SPECIFIED ALL DIMENSIONS ARE IN INCHES

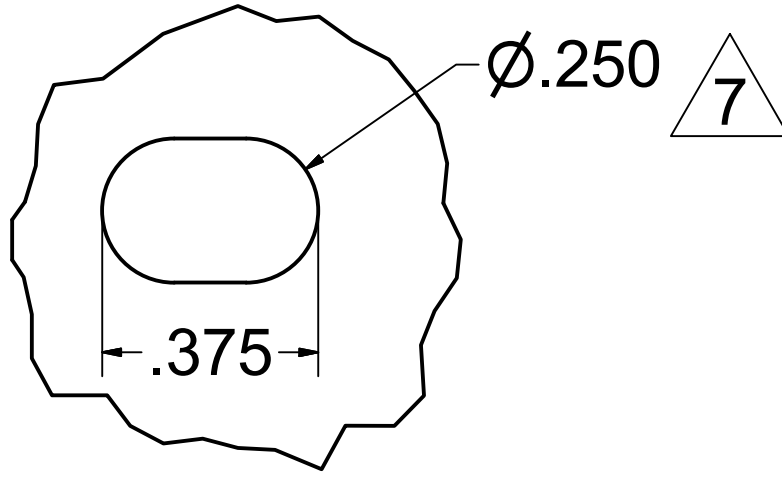
NOTICE:
Use of this document is subject to a confidentiality and nondisclosure agreement with Great Lakes Case & Cabinet Co., Inc. (GLCC) and may not be reproduced, disclosed or utilized in whole or in part without prior written authorization from GLCC.

PART NUMBER: CBB19X200	
QTY PER UNIT:	1
MATERIAL TYPE: SEE BOM	
MATERIAL GAUGE: SEE DETAILS	
FINISH: STOCK	
DRAWN Jaye	DATE 9/9/2005
CHECKED & APP. WSS	DATE 10/9/2013

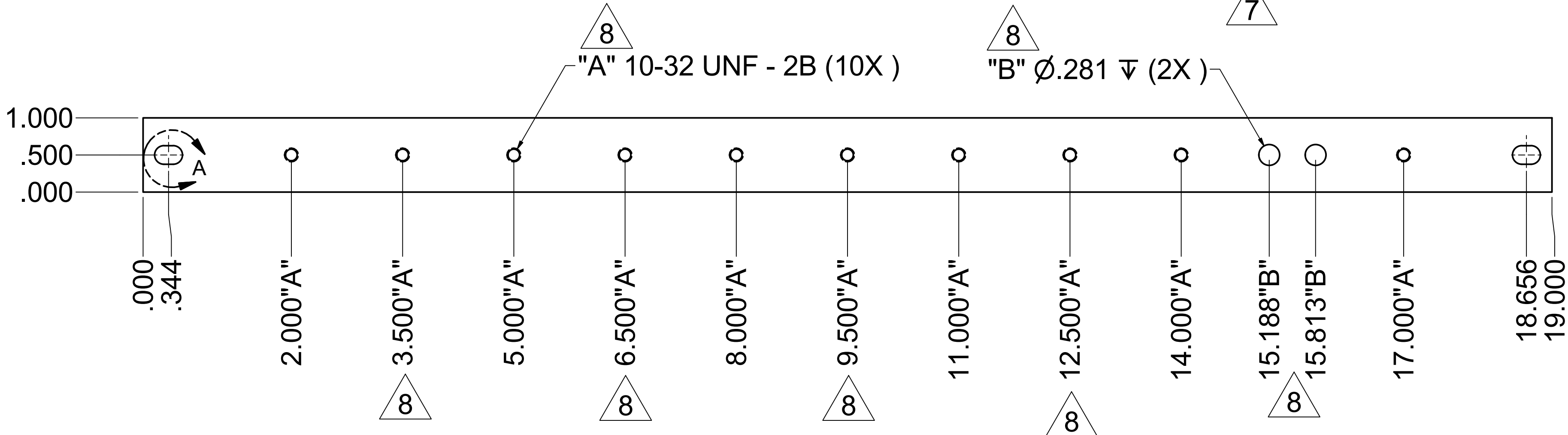
TITLE 19.0"L x 1.0"W COPPER BUS BAR, TAPPED #10-32 & #12-24 - ASSEMBLY	
GREAT LAKES CASE & CABINET CO., INC. P.O. BOX 551 EDINBORO, PA 16412 PHONE (814) 734-7303 FAX (814) 734-3907 E-MAIL glcc@greatcabinets.com	
DWG NO: 1003460	REV 7
SHEET: 2 OF 2	

REVISION HISTORY			
REV	DESCRIPTION	DATE	APPROVED
5	ECO-01636	9/22/2005	JL
6	ECO-02431	11/14/08	CD
7	ECO-06041	10/9/2013	CDM
8	ECO-06702	10/26/2015	VL

MATERIAL THICKNESS = 0.125



DETAIL A
(2 PLACES)



6 SPECIAL NOTES:
1) MATERIAL - C1100 / ASTM B187



INTERPRET DRAWING PER ASME Y14.5M-1994
DIMENSIONAL LIMITS APPLY AFTER APPLICATION OF FINISH
DRAWING NOT TO SCALE
TOLERANCE UNLESS OTHERWISE NOTED: ANGULAR +/- 1' .XXXX +/- .010 .XXX +/- .015 .XX +/- .030 .X FOR REF. ONLY
UNLESS OTHERWISE SPECIFIED ALL DIMENSIONS ARE IN INCHES

NOTICE:
Use of this document is subject to a confidentiality and nondisclosure agreement with Great Lakes Case & Cabinet Co., Inc. (GLCC) and may not be reproduced, disclosed or utilized in whole or in part without prior written authorization from GLCC.

PART NUMBER: CBB19X100	
QTY PER UNIT:	1
MATERIAL TYPE: SEE NOTES	
MATERIAL GAUGE: .125 THICK	
FINISH: -	
DRAWN Jaye	DATE 9/9/2005
CHECKED & APP. WSS	DATE 9-22-05

TITLE 19.0"L x 1.0"W COPPER BUS BAR, TAPPED #10-32 - DETAIL	
GREAT LAKES CASE & CABINET CO., INC. P.O. BOX 551 EDINBORO, PA 16412 PHONE (814) 734-7303 FAX (814) 734-3907 E-MAIL glcc@greatcabinets.com	
DWG NO: 1003461	REV 8
SHEET: 1 OF 1	