



# ***Addendum***

## ***Cat. 4875 Quick Start Guide***

**Version 1.2 - 061608**

### **Current version includes the following updates:**

Quick Start Guide was changed to include pictures that replace the step-by-step instructions for quick and easy reference.







For use with:

4875/76  
Master  
Console



Attention first time  
installers of this system!

**DO NOT install field  
wiring, or attempt to  
program the system  
before you have  
completed the procedure  
in the Pro-Alert 480  
Quick Start Guide.**





## Pro-Alert 480 Quick Start Guide

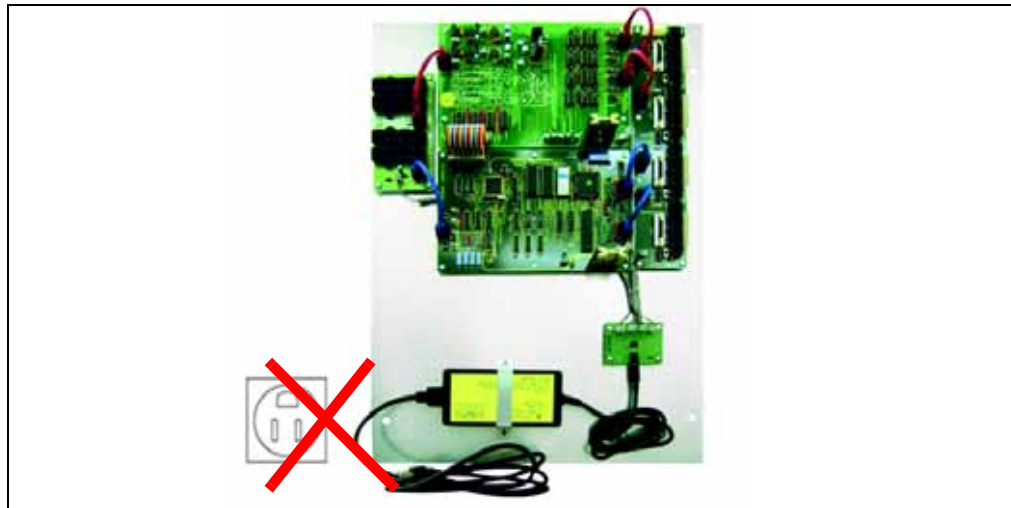
### Getting Started

#### Components

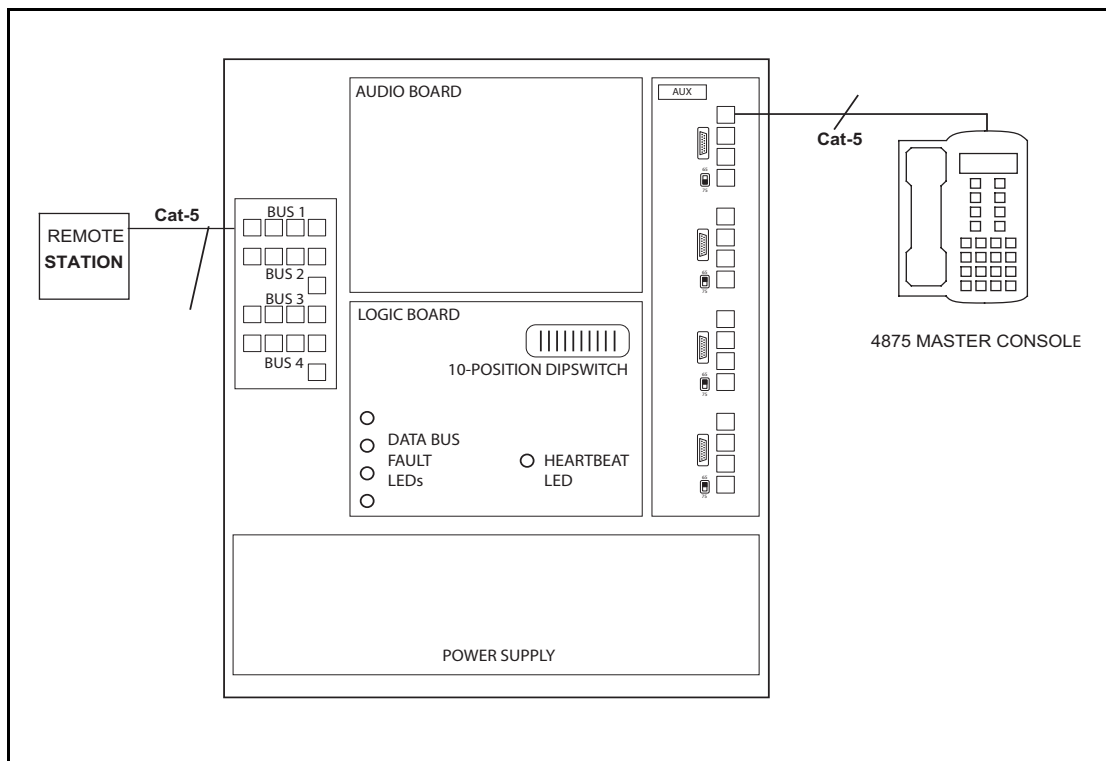


## Power Down System

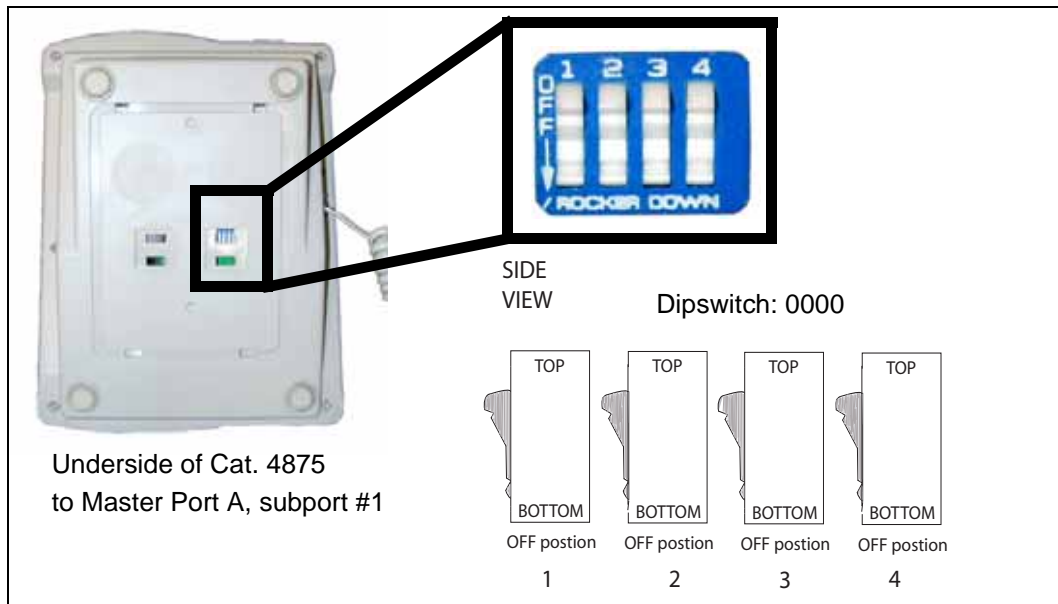
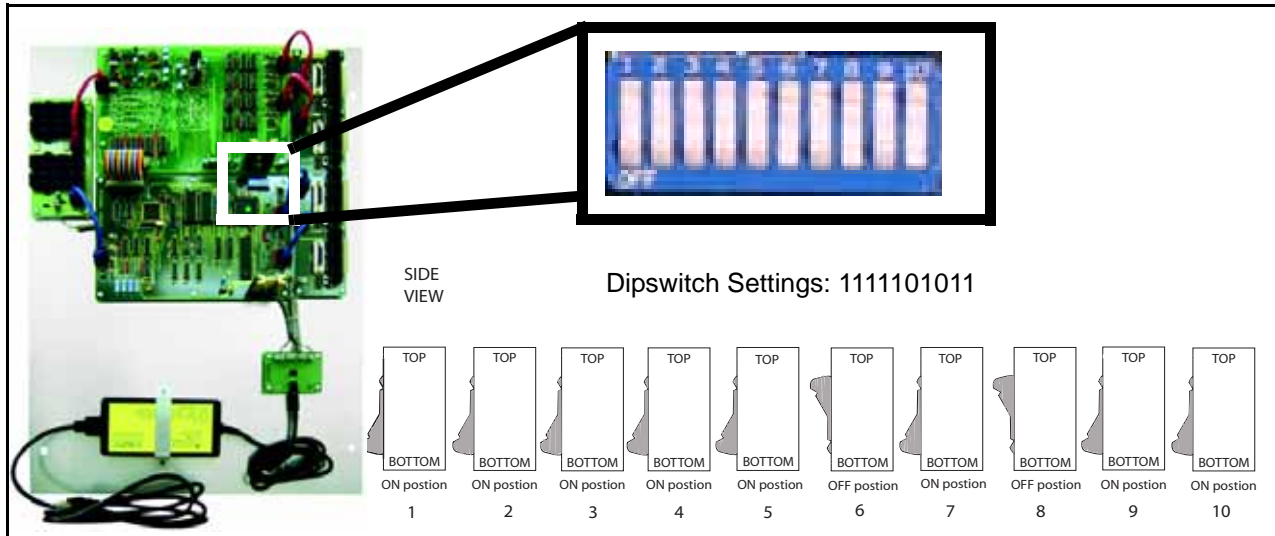
### Disconnect Field Wiring



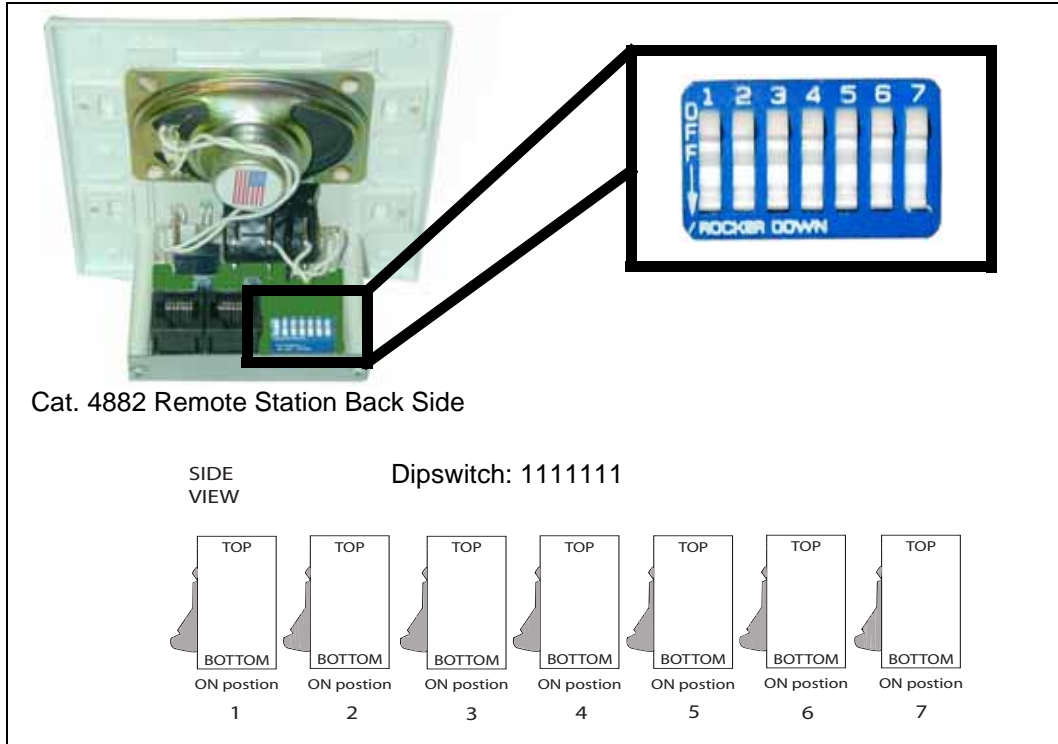
## System Diagram



## Set Dipswitches

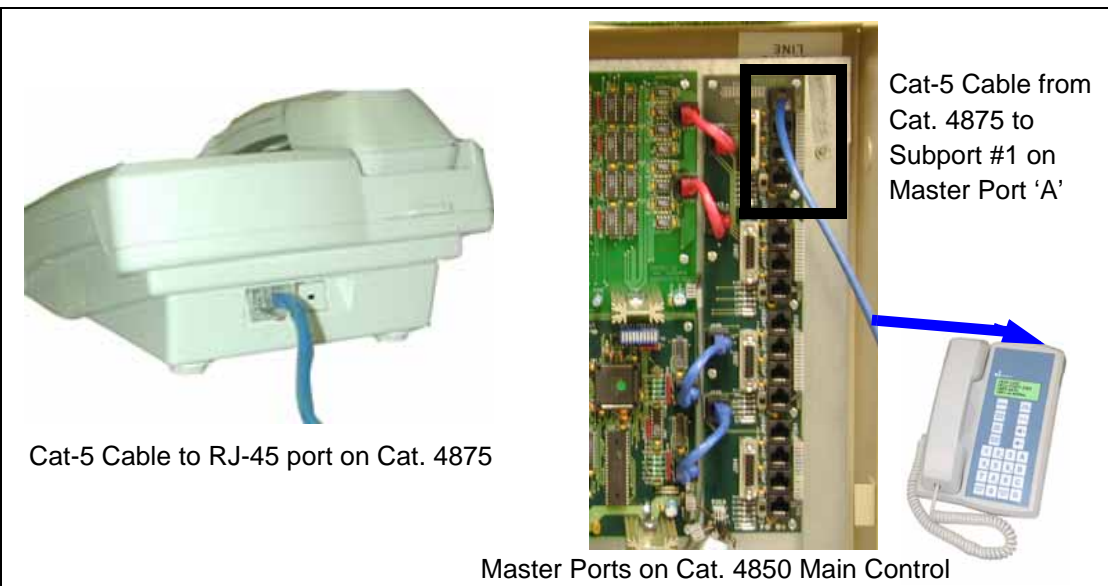
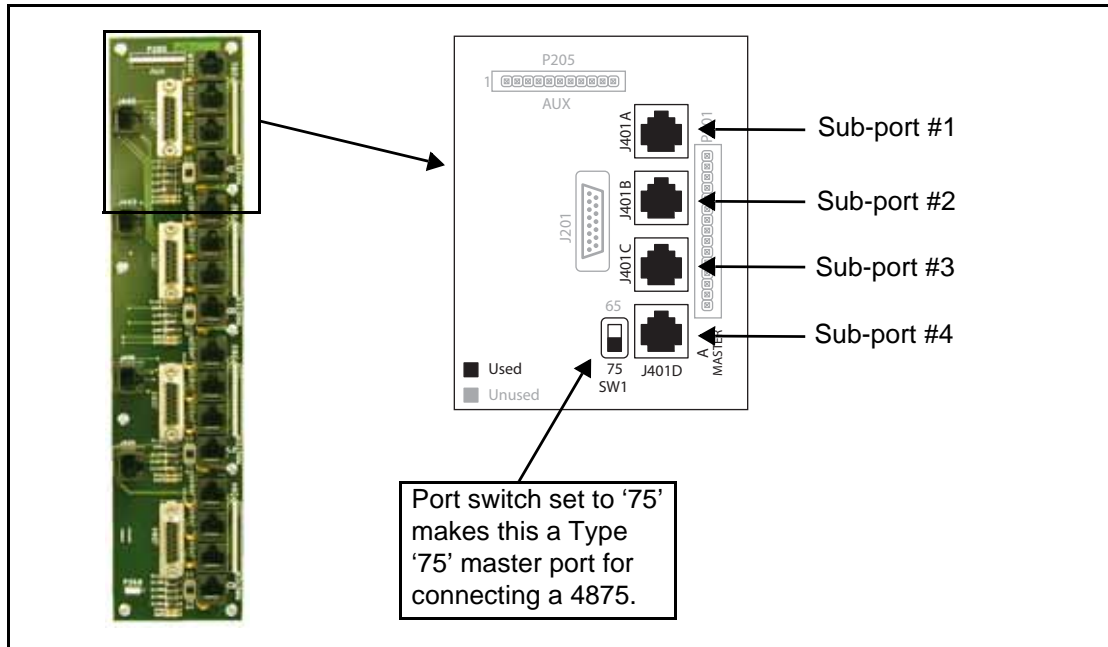


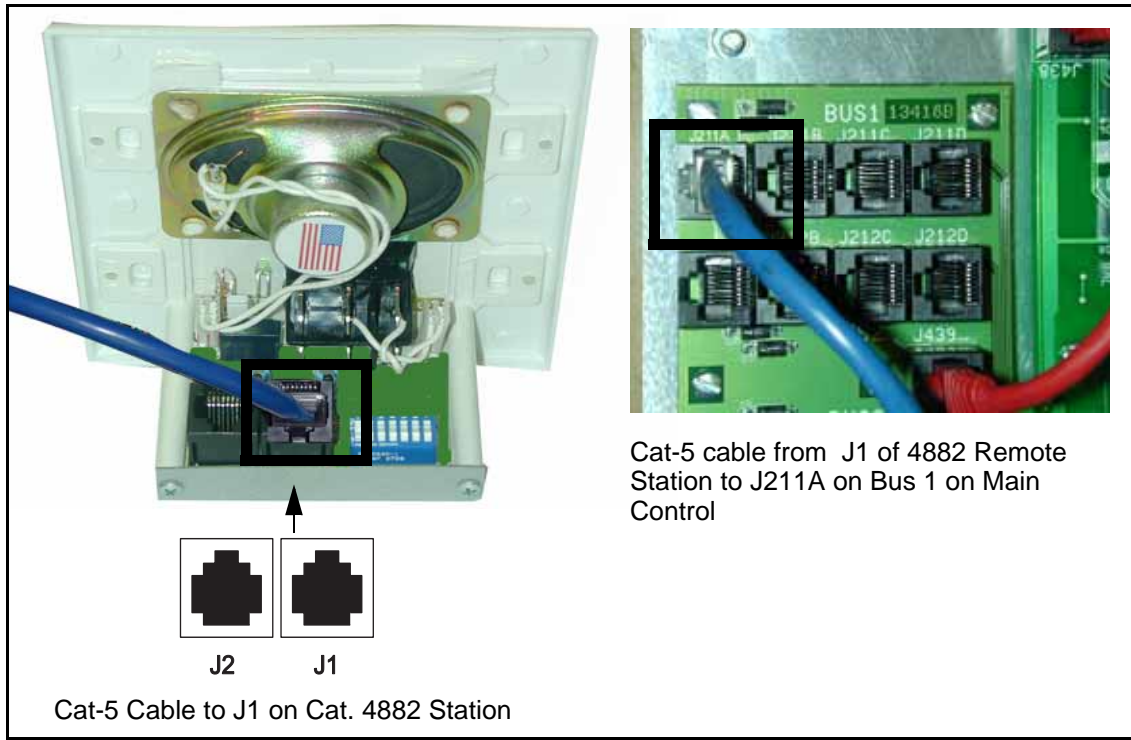
### Bus Address 001



# Connections

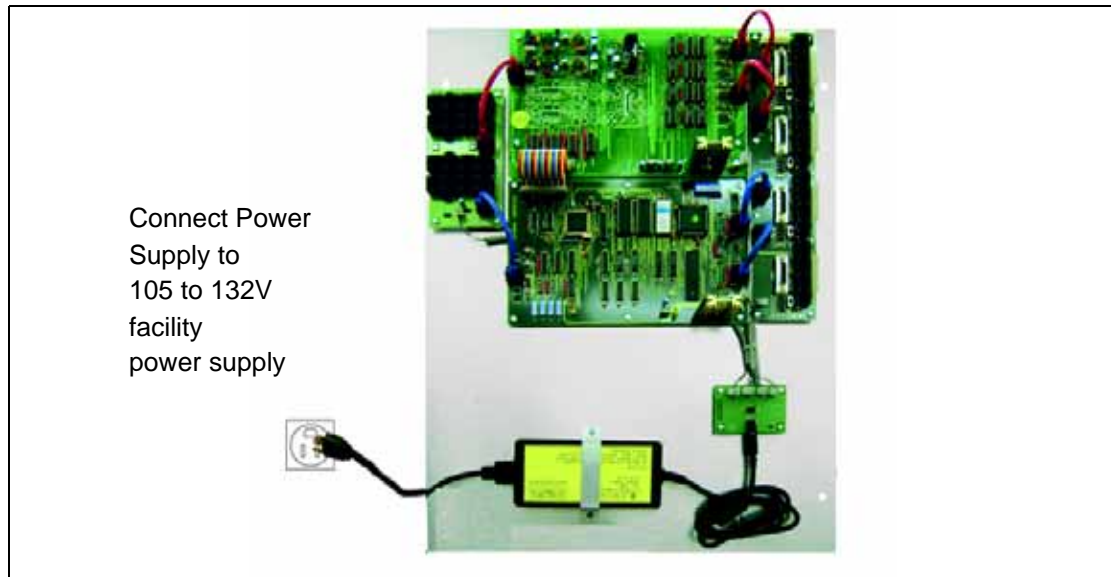
## Set the Master Port to '75'



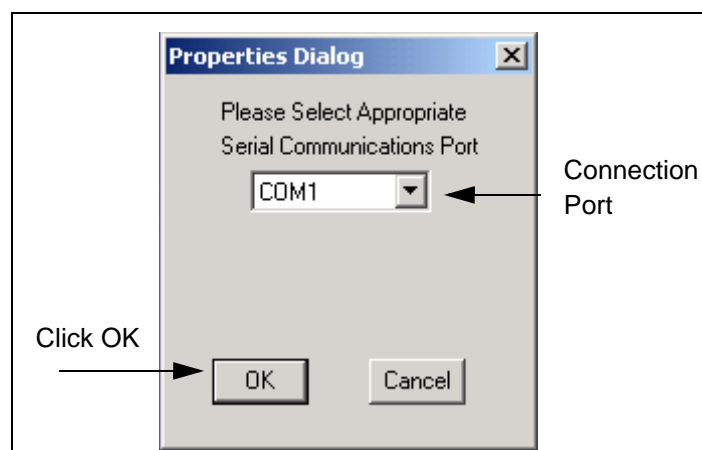


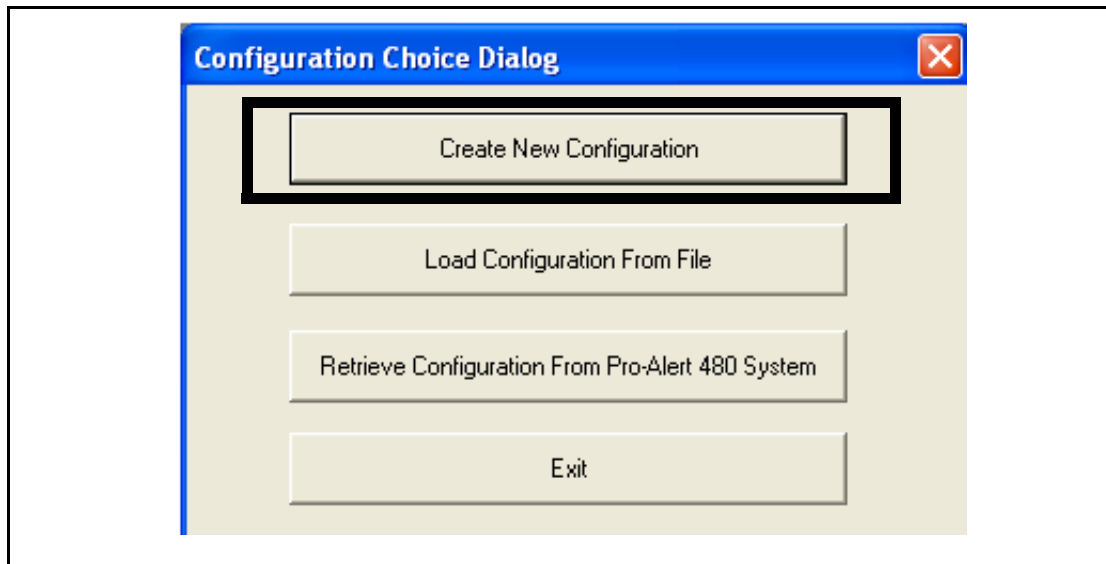
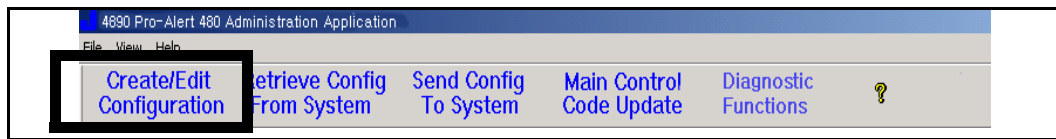
## Programming

Install 4890 application as outlined in the 4890 Installation and User's Guide before proceeding. After you have installed the application and connected the PC to the ProAlert system:

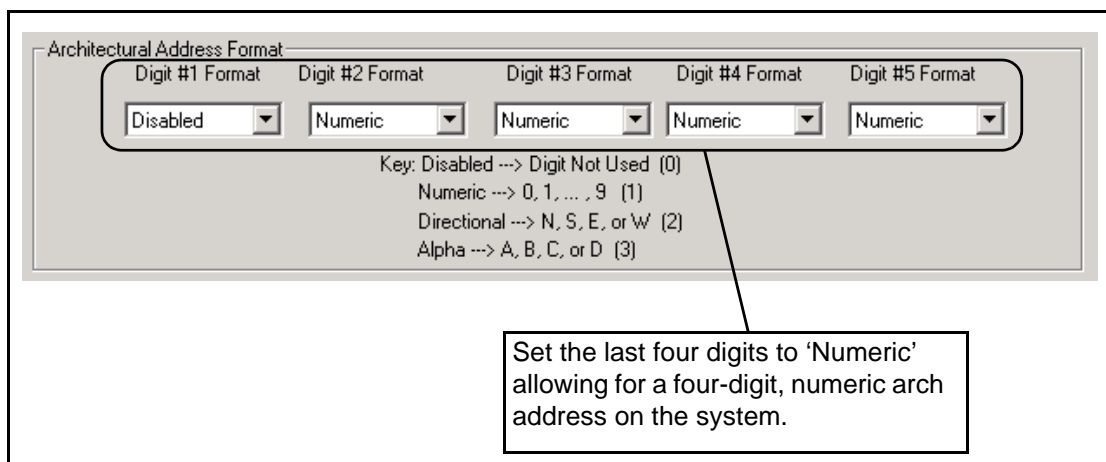


### Open Cat. 4890 Administration Program Software on PC





### Global System Data Tab



### Main Control Assignment Tab

Please enter the Architectural Address of the connected Cat. 4850/51 Main Control units.

Main 'A' -->  ← Enter **1000** for address of Main Control A

Main 'B' -->

Main 'C' -->

Main 'D' -->

### Master Setup Tab

Be sure you are working with master settings on master port 'A'.

Enter **2000** for the master station arch address.

Main 'A'  Mst A

Architectural Address:   Printing  Computer/Data Interface  Overseer

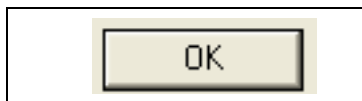
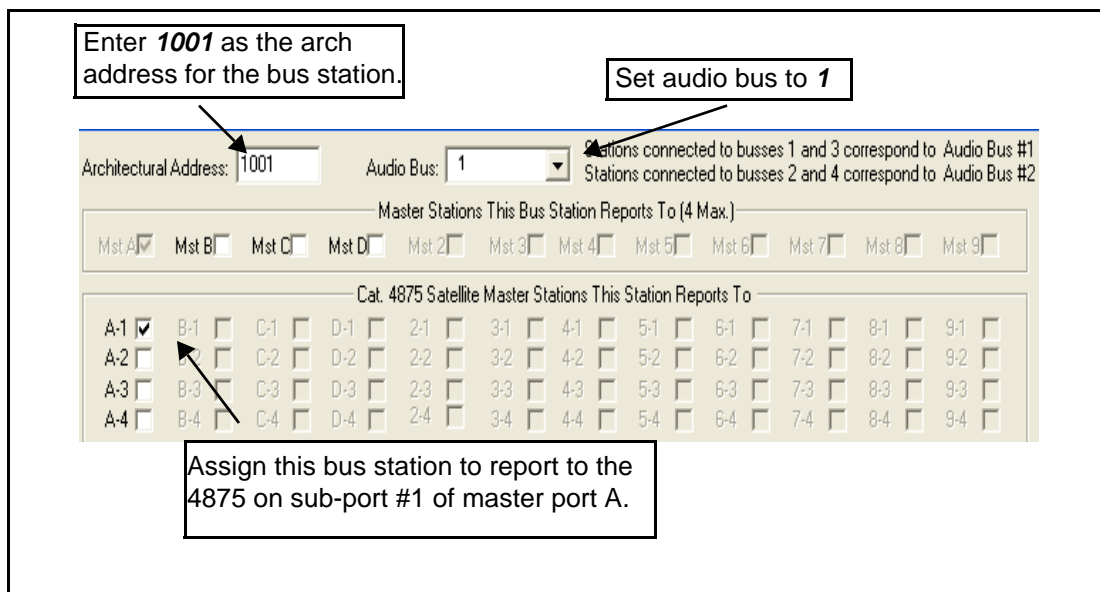
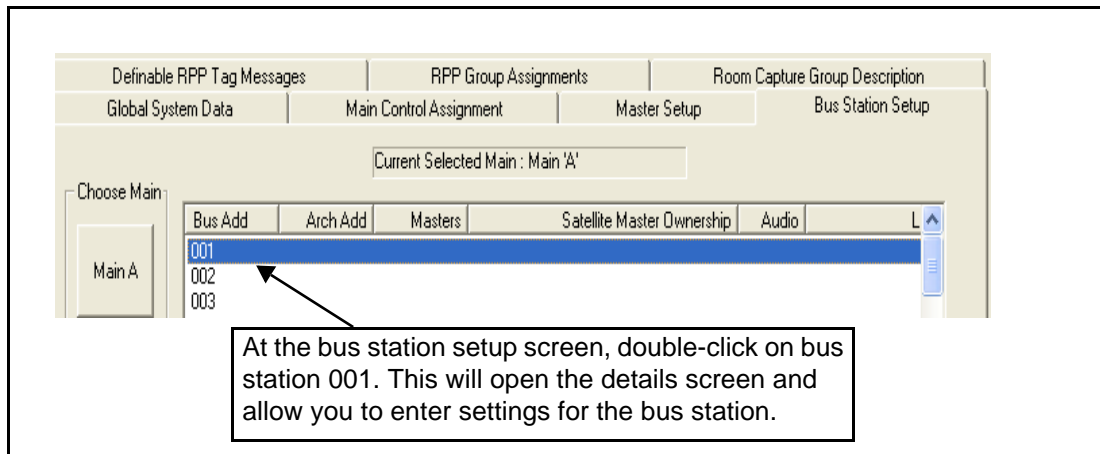
Reports To:  Mst B  Mst C  Mst D  Mst 2  Mst 3  Mst 4  
 Mst 5  Mst 6  Mst 7  Mst 8  Mst 9

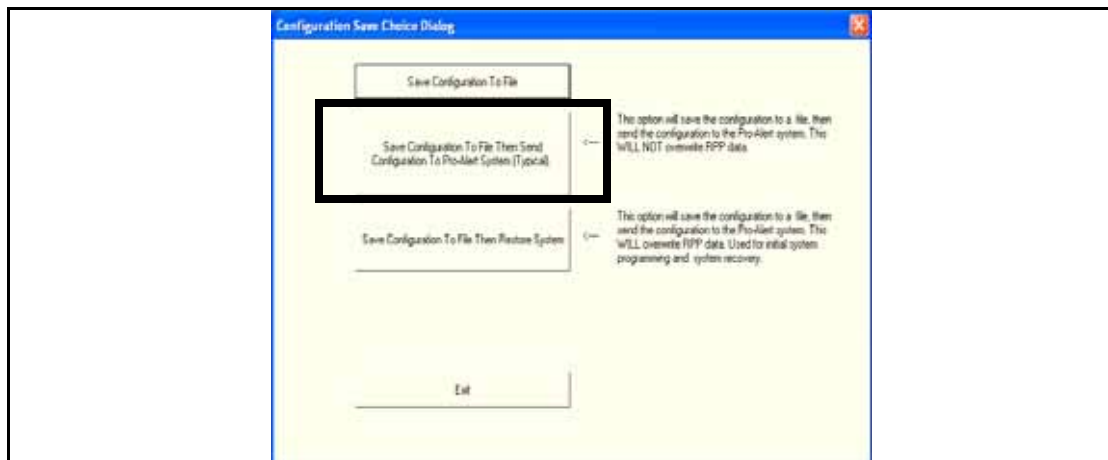
Master Name:  12 Chars. Max.  A-1  A-2  A-3  A-4

Connected Cat. 4875's

Assign this master to sub-port #1.

## Bus Station Setup Tab





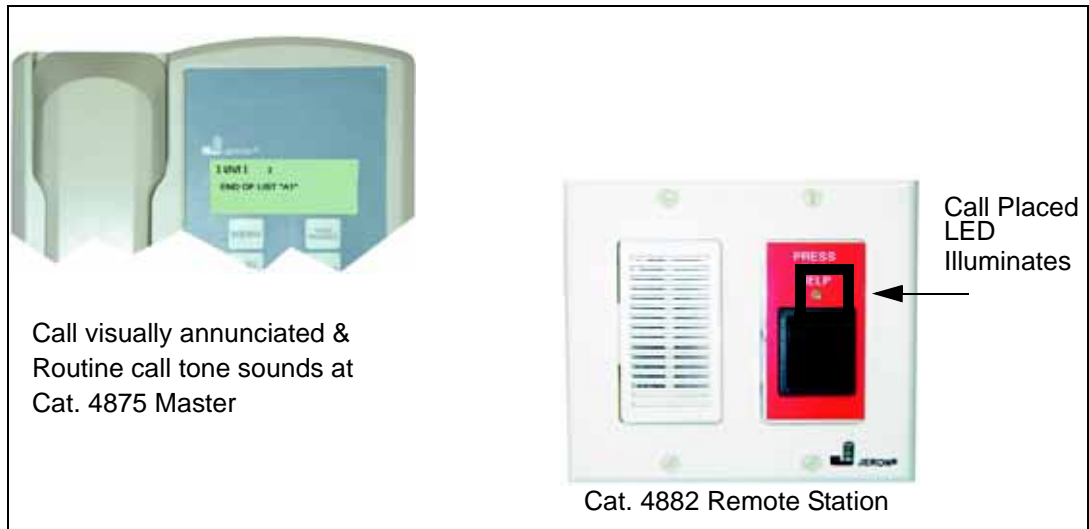
Save configuration file in a folder on your PC. Configuration will automatically be uploaded to the Provider system.

## Operation

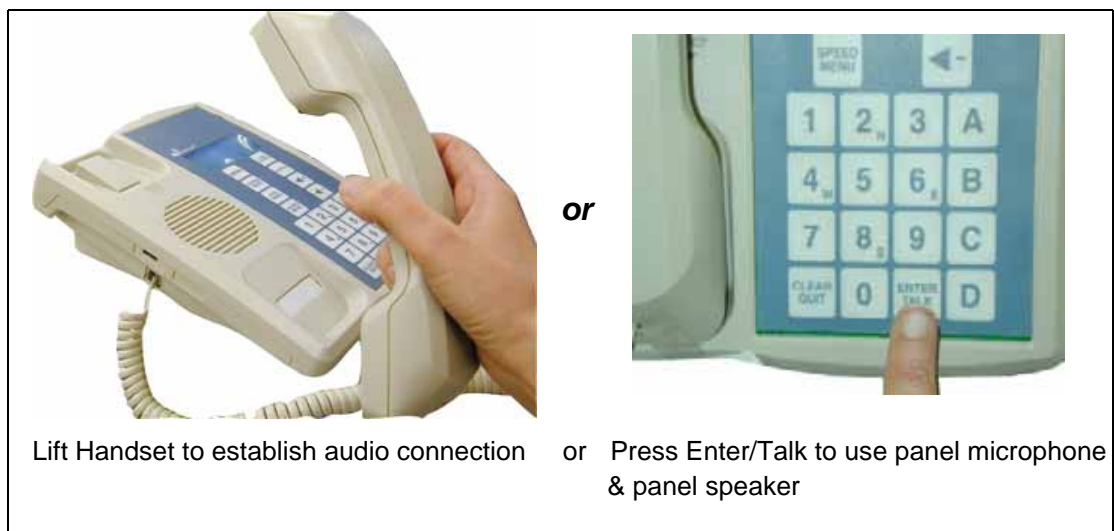
### Place a Call



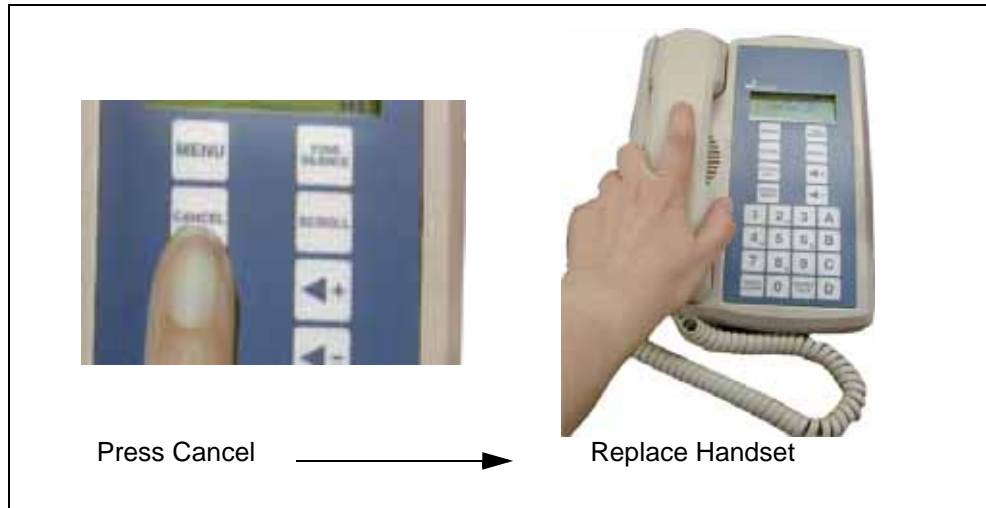
## Verify



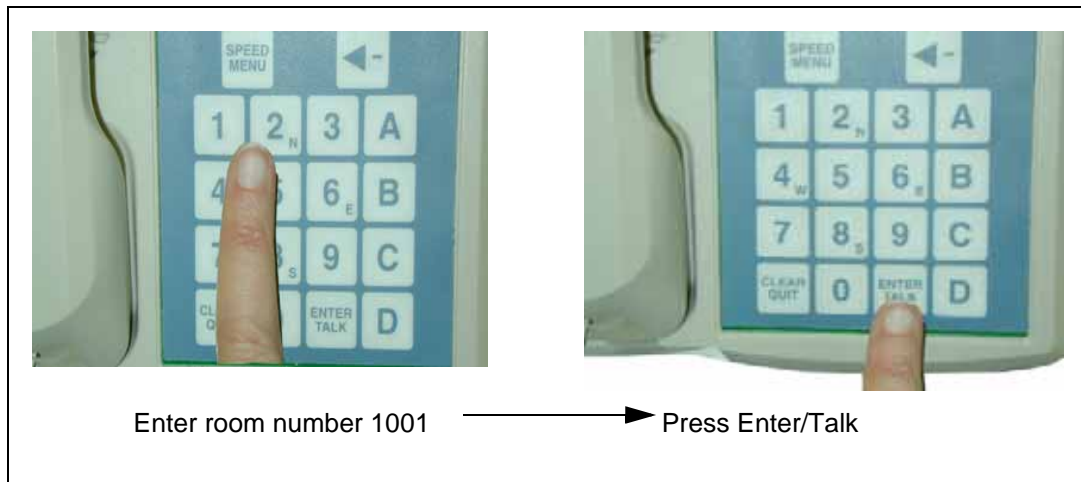
## Answer Call

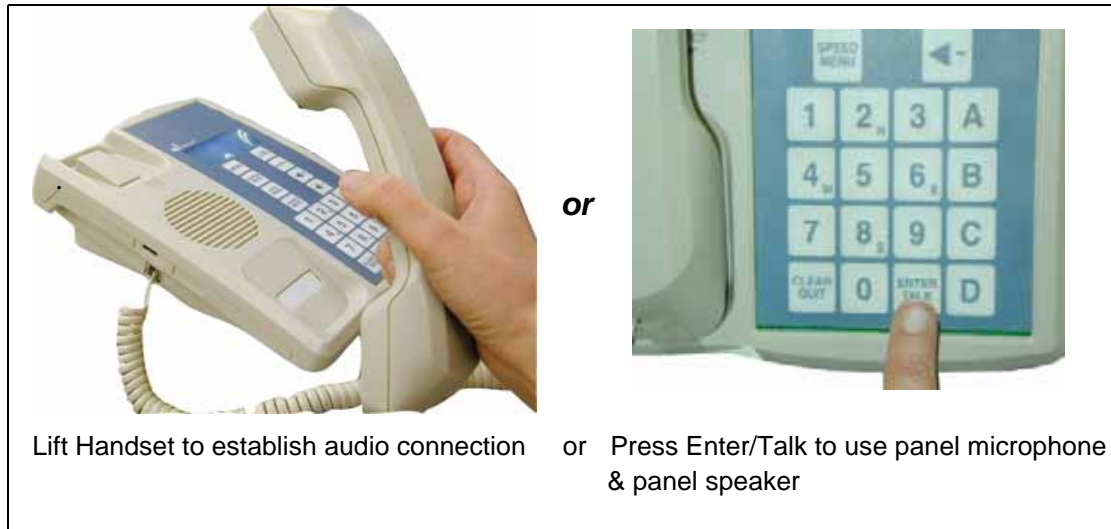


## Cancel Call

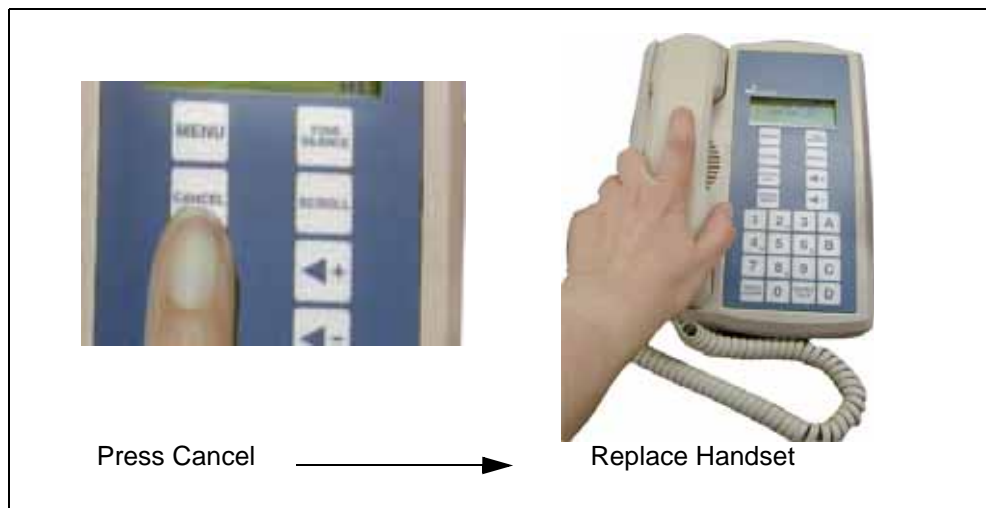


## Originating a Call to Remote Station





### Cancel Call



## Troubleshooting

Symptom	Possible Cause	Remedy
4875 display reads: 1001: FAI LED	Dipswitch settings on the remote station are incorrect. Verify that the dipswitch on the remote station is set according to page 4.	
4875 display reads: I NVALI D after an attempt to originate a call to the remote station.	You entered the architectural address incorrectly when originating the call.	Verify that the entered architectural address matches the address programmed using 4890 software. See page 10.
4875 display reads: WAI TI NG FOR DATA	Master port switch is set to '65'.	Power down the main control, set the port switch to '75,' then power up the main control.
	4875 is actively receiving configuration.	No action is necessary.
4875 display reads: NOT CONF I GURED	Master port is not programmed.	Verify that you have properly programmed the master port. (See page 9.)
	Dipswitches are set incorrectly.	Verify that you have the dipswitches set properly on the main control, master console, and bus station. (See pages 3-4)
4875 display continues to read, TESTI NG	4875 master is not connected to a sub-port on the master port.	Verify that you have not connected the master station to an RJ-45 port on the audio bus.
Call displays at the master station but there is no audio.	Bus station is connected to an audio bus other than the one you assigned using 4890.	Verify that the bus station is programmed for audio bus 1 in 4890 programming, then verify that the station is connected to an RJ-45 port on audio bus 1.

## Main Control

Green Heartbeat LED*		
Condition	Indication	Action
Steadily flashing	System operating normally with valid configuration	No action is necessary.
Rapidly flashing	System does not have valid code.	Upload valid code into the system using the 4890 application.

<b>Green Heartbeat LED*</b>		
<b>Condition</b>	<b>Indication</b>	<b>Action</b>
Steadily lit	The system does not have a configuration.	Use 4890 to upload a valid configuration to the Pro-Alert system.
Two flashes followed by a pause	Possible marginal communications link between master and main.	Verify that the Cat-5 cable connecting the master to the main control is tested and complies with T568A standard.
Off	No power to main control.	Verify that the power supply is connected to a viable 120VAC supply.
<b>Amber Ground Fault LED*</b>		
<b>Condition</b>	<b>Indication</b>	<b>Action</b>
Steadily lit	Possible ground fault.	Disconnect field wiring beginning with master station, then continuing with bus stations. Observe LED to see if it extinguishes when the equipment is removed. If so, the problem is likely related to the piece of equipment or its connective wiring.
Off	Normal operation.	No action necessary.
<b>Red Data Bus Fault LEDs*</b>		
<b>Condition</b>	<b>Indication</b>	<b>Action</b>
Steadily lit	Bus station may be wired incorrectly with Data High (DH) and Data Low (DL) positions switched.	Note which LED is lit. There are four data bus fault LEDs labeled Faults 1–4.* They correspond to Buses 1–4 on the audio bus. For example, if Fault 1 LED is lit, this indicates a problem with one of the stations connected to Bus 1. Verify that the station wiring is correct and is consistent with wiring details shown in on page 2.
	Shorted conductors in Cat-5 cable	Verify that no cable shorts exist
Off	Normal operation.	No action necessary.

\* LED locations are illustrated on page 2.