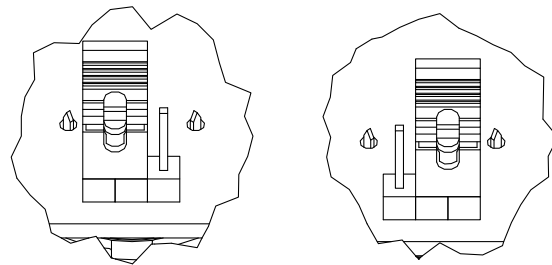


VOLUME JUMPER



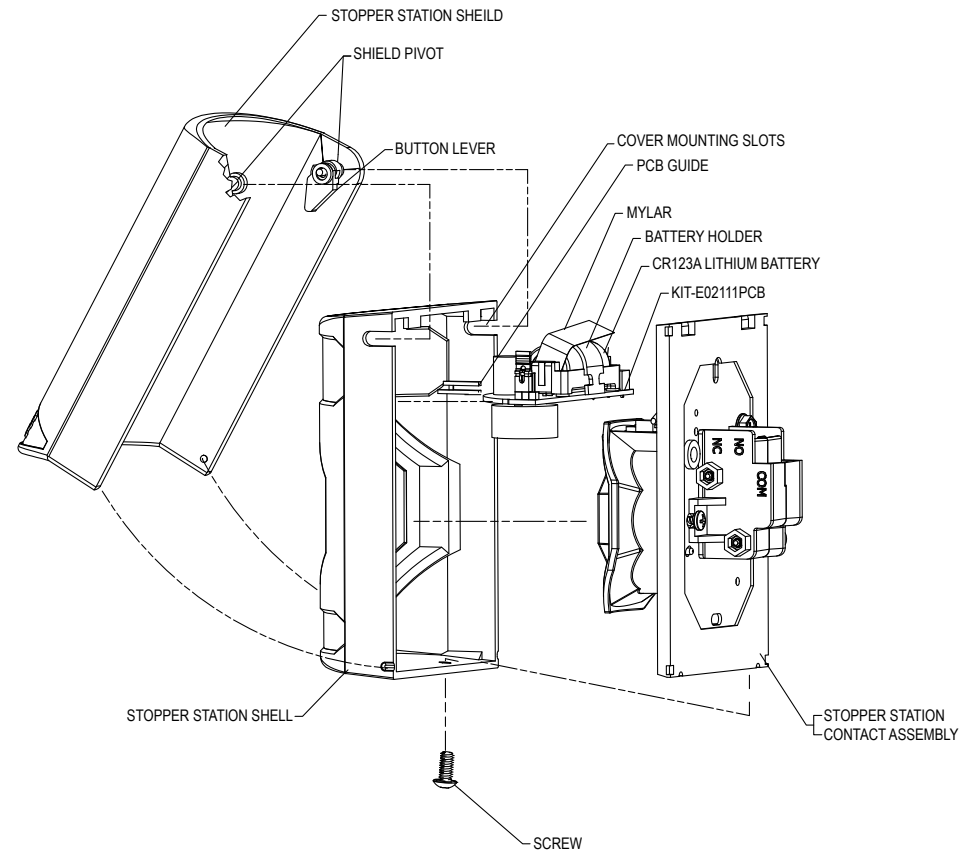
HIGH  
(default)

LOW

VIEW A

### INSTALLATION INSTRUCTIONS

1. Rotate the button lever clockwise to the stop (as shown) so it is pointed toward the inside of the Stopper Station Shield.
2. With shield rotated to open position (approximately 90° to shell), insert shield pivots into slots on Stopper Station shell.
3. Place the volume jumper to desired sounder volume (default high).
4. Insert PCB fully into PCB guides.
5. Rotate shield to closed position.
6. Rotate shield to fully open position then back to closed position to ensure the button lever is pressed down onto the button. (If not, remove PCB and repeat steps 4 and 5.)
7. Pull off the plastic battery tab with the battery remaining installed (sounder is now active).
8. Mount shell with shield onto contact assembly.
9. Install bottom screw to hold shell to contact assembly.



**WARNING:** This product can expose you to chemicals including Dichloromethane, which is known to the State of California to cause cancer, and Bisphenol A (BPA), which is known to the State of California to cause birth defects or other reproductive harm. For more information go to [www.P65Warnings.ca.gov](http://www.P65Warnings.ca.gov).

Three year warranty or a one year limited warranty (from date of purchase) on most products.  
See website for details. Electronic warranty form at [www.sti-usa.com/wc14](http://www.sti-usa.com/wc14).



## STI-6517A STI STOPPER® STATION SHIELD AND SOUNDER

All specifications and information shown were current as of publication and are subject to change without notice.

6517AIS SEPT2012

