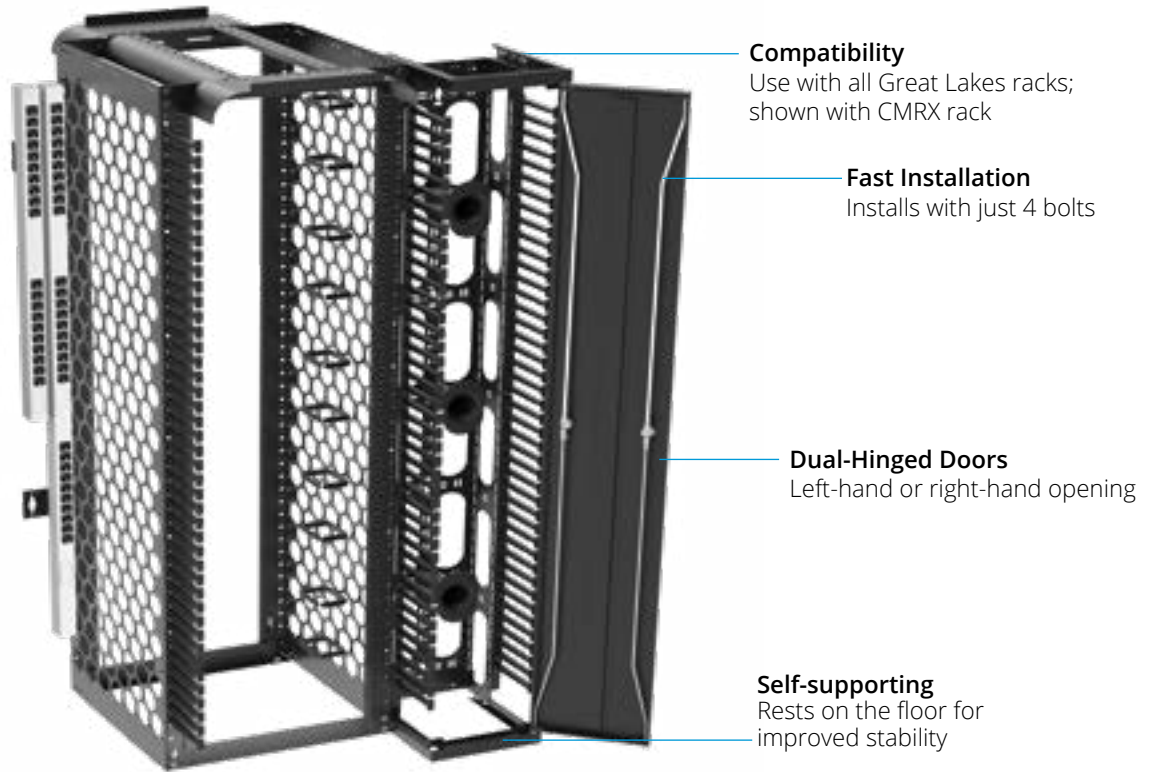


# VCM

VERTICAL CABLE MANAGER WITH NO ASSEMBLY REQUIRED & UNIVERSALLY COMPATIBLE



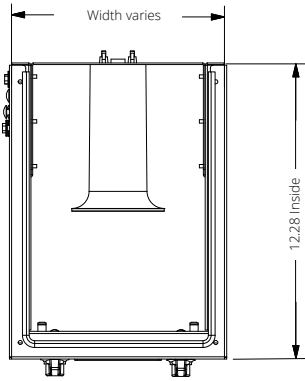
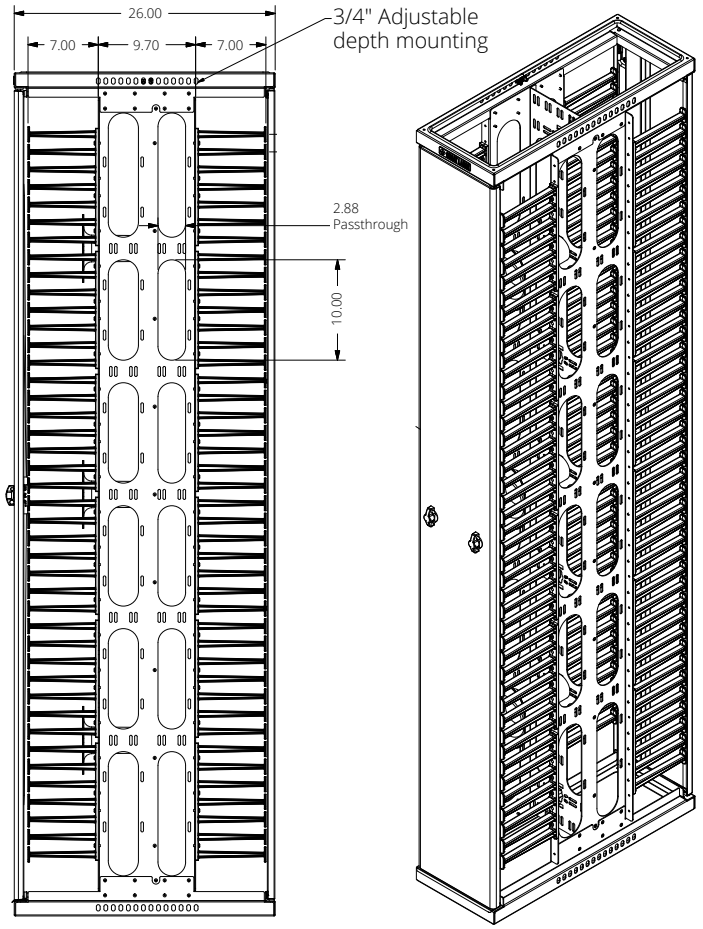
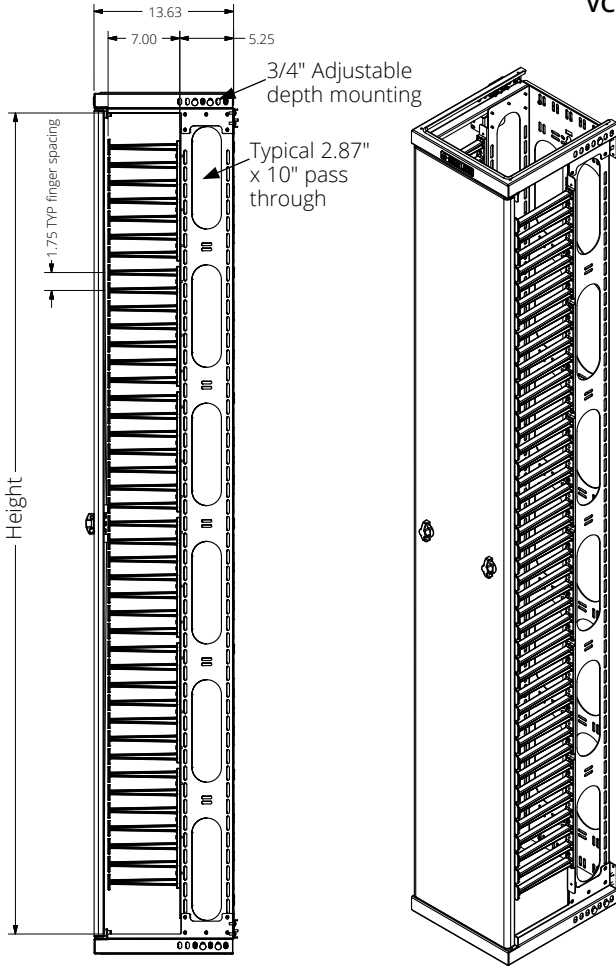
Height	Width	Channel Config.	Color	Example
VCM-xxU-	xx12	xx-	x	Configured VCM
45	06 (6")	FO (Front only)	B (Black)	VCM-45U-1012FO-B
52	08 (8")	FR (Front & rear)	W (White)	
59	10 (10")			
	12 (12")			

## FEATURES

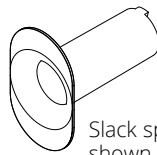
- Self-supporting VCM rests on the floor for improved stability and easy installation
- Metal channel with plastic fingers, 12"D
- Metal dual hinged doors for left-hand or right-hand opening
- Obround pattern along channel for cinch straps
- Keyhole pattern in multiple vertical locations along channel for button mounting PDUs
- Repositionable cable slack spools included with 10 and 12" configurations
- Mounting holes allow VCM to mount flush with racks or at a varied depth

VCM-FO

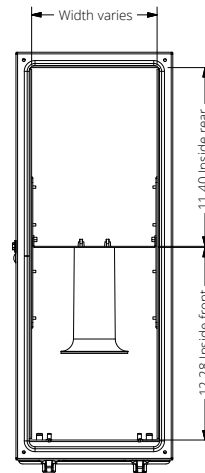
VCM-FR



TOP VIEW



Slack spool shown for reference



TOP VIEW