

**IPPTZA04Z04A****IP MINIPTZ CAMERA 4MP 4X**

Compact size Advance series IP PTZ camera. 4X optical zoom, resolution 4MP@30 fps. IR LEDs with a range of 30 metres (Smart IR), ONVIF compatible. Video analysis functions: Line cross detection (distinction between humans / vehicles), Detection of Entry into / Exit from / Intrusion into an area (distinction between humans / vehicles), Human / vehicle counting on a line. Smart tracking function, Scene change detection, Video tamper detection, Out-of-focus image detection. WDR 120 Db, Smart compression H.265+/H.265/H.264+/H.264/MJPEG, SD slot (max. 256 GB). Audio: built-in speaker and microphone, 1 audio in / 1out. Audible and visual alarm (speaker and flashing LED for deterrent use). Alarms: 1in/1out. IP66 waterproof die-cast aluminium enclosure, power supply 12 VDC / PoE IEEE802.3at. Power supply unit included, compatible accessories: JBA-FA, CMA-FA, WMA-FA, PMA-A, AMA-A.

AWARDS



IPPTZA04Z04A

IP MINIPTZ CAMERA 4MP 4X

MAIN FEATURES

Camera sensor	1/2.7" CMOS Ultra Starlight
Lens type	Motorized
Effective pixels (H x V - pixels)	2560x1440
Lens optical varifocal dimensions (mm)	2.8 ÷ 12
Horizontal FoV (°)	33÷98
Vertical FoV (°)	18÷50
Diagonal FoV (°)	36÷111
Electronic shutter (s)	1/25÷1/25000
Camera optical zoom	4x
Camera digital zoom	Yes
Sensitivity	0.01 (colour), 0 (B/W, led IR ON)
Signal/noise ratio (dB)	>52 (AGC OFF)
Video trasmission	Triple streaming
Management software	Comelit CCTV Manager
Video resolution	2560x1440 (4MP)

DORI

Detection (min - max) (m)	68 ÷ 206.7
Observation (min - max) (m)	27.1 ÷ 82
Recognition (min - max) (m)	13.6 ÷ 41.3
Identification (min - max) (m)	6.8 ÷ 20.7

SOFTWARE/FIRMWARE SPECIFICATIONS

Video compression	H.265+ / H.265 / H.264+ / H.264 / MJPEG
Audio compression	G711A/U
Frame rate	30fps
Bit rate range (Mbit/s)	0.6 ÷ 16



IPPTZA04Z04A

IP MINIPTZ CAMERA 4MP 4X

SOFTWARE/FIRMWARE SPECIFICATIONS

Protocols supported	DDNS, DHCP, FTP, HTTP, HTTPS, IPv4, IPv6, NTP, PPPoE, QoS, RTCP, RTP, RTSP, SMTP, TCP/IP, UDP, UPnP, IGMP, ICMP, DNS, SNMP, IEEE 802.1x, ONVIF (Profile-S), ONVIF (Profile-G), ONVIF (Profile-M), ONVIF (Profile-T)
Updating firmware using network	Yes
Users connected at the same time	16
Network security	Password, multi-user authorization, IP filtering, HTTPS, SSL
Remote viewer from browser	Edge, Firefox, Chrome, Safari
Remote control by mobile	APP Comelit CCTV
Latest firmware version	5.1.1.0(50992)(2023-09-26)

FUNCTIONS

Motion detection	Yes
Video analytics	Scene change detection, Face detection, Video tampering detection, Line crossing detection (human / vehicle classification), Region entrance / exit / intrusion detection (human / vehicle classification), Vehicles / people counting, Smart Tracking, Face detection
Privacy zones (n°)	4
Back light compensation (BLC)	BLC, HLC
Digital effects	Flip, Mirror (Horizontal, Vertical, 180° rotation), Saturation, Brightness, Contrast, Sharpness
Exposure control	Manual, Auto
Image flip	Yes
Automatic gain control (AGC)	Yes
Camera titling	Yes

HARDWARE SPECIFICATIONS

IR LED lighting distance	30m
Vandal Resistant rating (IK code)	IK10 (metal housing)
IP protection rating	IP66
Alarm Inputs/Outputs	1/1



IPPTZA04Z04A

IP MINIPTZ CAMERA 4MP 4X

HARDWARE SPECIFICATIONS

Audio Inputs/Outputs	1 + Mic / 1 + Speaker
LAN output type	Ethernet 10/100 Mbit/s (RJ45)
Support SD card (card not included)	Micro-SD (256GB max)

GENERAL DATA

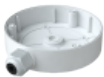
Supply voltage	12VDC
Max absorption (W)	22.2
PoE power supply	Standard IEEE 802.3 at
Type of power supply	PoE, External power supply
Height (mm)	162
Width (mm)	130
Depth (mm)	130
Product weight (g)	1.2
Type of finishing materials	Plastic, Die-cast aluminum
Product color	Black and white
Operating temperature (°C)	-30 ÷ 60
Operating humidity (RH max) (%)	25 ÷ 95
Supplied accessories	Power supply

**IPPTZA04Z04A****IP MINIPTZ CAMERA 4MP 4X****ACCESSORIES****WMA-FA ADVANCE NEXT WALL BACKPLATE**

Wall-mounting bracket for Next and Advance cameras. For model compatibility please refer to the diagram in the download section.

**PMA-A ADVANCE ADVANCE NEXT BEUGEL OP PAAL POLE-MOUNTING BACKPLATE**

Pole-mounting accessory for Next and Advance cameras. For model compatibility please refer to the diagram in the download section. Pole diameter from 80 to 140 mm

**JBA-FA ADVANCE NEXT CONNECTION BOX IP66**

Junction box for securing Next and Advance cameras. For model compatibility please refer to the diagram in the download section.

**CMA-FA ADVANCE NEXT CEILING BACKPLATE**

Ceiling-mounting accessory for Next and Advance cameras. For model compatibility please refer to the diagram in the download section.

**AMA-A ADVANCE NEXT CORNER BACKPLATE**

Corner-mounting accessory for Next and Advance cameras. For model compatibility please refer to the diagram in the download section.