

2024 H2 EN

PRODUCT BROCHURE

IP Surveillance Solutions

VIVOTEK
A Delta Group Company

VIVOTEK

A Delta Group Company

As one of the world's most trusted IP surveillance solutions provider, we deliver intelligent security, control, and management for a safer society.

Founded in Taiwan in 2000, we are widely recognized for our expansive technical capabilities in imaging and audio, specializing in IP cameras, video management software, and edge based AI video analytics. In 2017, we joined the Delta Group, a global leader in power and thermal management solutions, to serve as the security and intelligence core of Delta Building Automation Business.

VIVOTEK
A Delta Group Company

Making Society's Most Trusted Intelligent Security Systems

Global Presence

Through a global network of over 200 distributors in more than 100 countries, we serve system integrators building intelligent solutions for end-users worldwide. VIVOTEK Inc. (TAIEX: 3454) was listed on the TWSE in 2011, and we have established offices in the U.S., Netherlands, India, Mexico, and Japan.

We Get The Picture

With more than 20 years at the forefront of the industry, we've driven breakthroughs in R&D, and built a solid technological foundation for the industry. It's based on these two decades of experience that we have the expertise to know what keeps business owners and security operators up at night.

Smarter Is Safer

Our AI-powered video analytics deliver improved overviews and real-time insights, giving security operators the information they need, when they need it, to ensure safe and secure operations. With intelligent technologies integrated into our surveillance solutions, users have the peace of mind that their sensitive information is secured against prying eyes.

Trusted Quality

Choosing VIVOTEK means choosing quality you can trust. We develop, test, and manufacture our industry leading products, technologies, and solutions in-house, meeting the highest international standards and regulations for quality management and environmental responsibility.

Seamless Integration, Meaningful Connection

The most robust and effective solutions for keeping people, assets, and data safe require many varied technologies to work seamlessly together. Our innovative surveillance solutions unlock new possibilities for a wide range of vertical applications, leveraging our two decades of industry expertise and global strategic partnerships.

Smarter Solutions for Smarter Setups

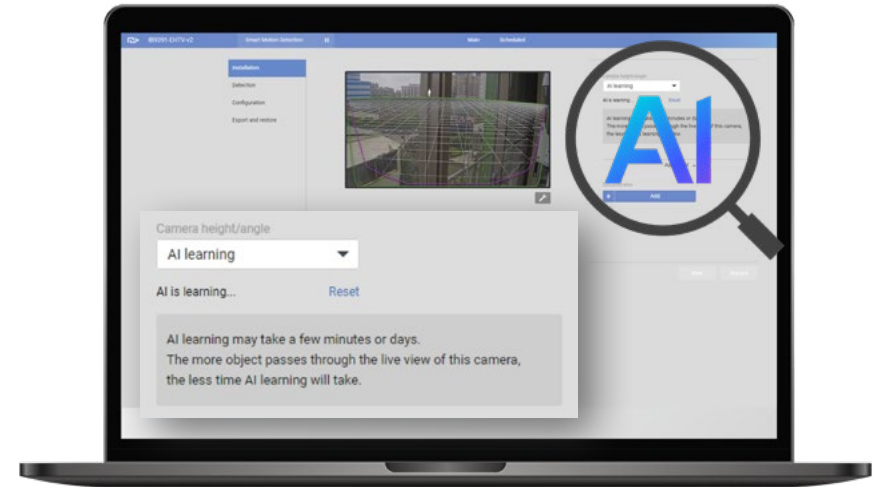
Advantages Offered by VIVOTEK AI Solution

✓ Self-Optimize for Precision

Our self-calibration feature is a game-changer. VIVOTEK AI cameras start self-calibrating the moment they power on, learning the scene and optimizing the algorithm for precise people and vehicle analytics results. Even if the field-of-view changes, they adapt seamlessly.

✓ No Need for Perspective Correction, No Analytics Settings

VIVOTEK AI eliminates the requirement for perspective correction and intricate analytics settings on the camera. No plugins or module installations on your system. With VIVOTEK AI, it's as simple as connecting and going.



AI optimizes itself for precision, saving time and reducing hassle

Seamless Integration for Streamline Results

Effortless Deployment of Surveillance System

✓ Zero Configuration Hassles

Vivotek network video recorders (NVR), and video management systems (VMS) effortlessly handle metadata from Vision Object Analytics with zero configuration hassles, eliminating the need for plugins or module installations.

✓ No Module or Plugin Installation Required

VIVOTEK NVR and VMS, purpose-built for simplicity, natively support metadata from Vision Object Analytics out-of-the-box, requiring no additional analytics modules or plugins simply connect and go.

✓ Seamless Integrated Solution

Incorporating edge computing in front-end cameras and back-end systems seamlessly connects software and hardware, prioritizing optimal user experience to humanize AI applications for a safer and smarter living environment.



Enhancing operational efficiency through video insights in analytics, notifications, and search

Operations Made Fast with Analytics Notification



Smart Motion Detection

Recognizes people activities with unaffected by changes in lighting, shadows, or other factors. Smart Motion Detection reduces false alarms and offers intelligent protection.



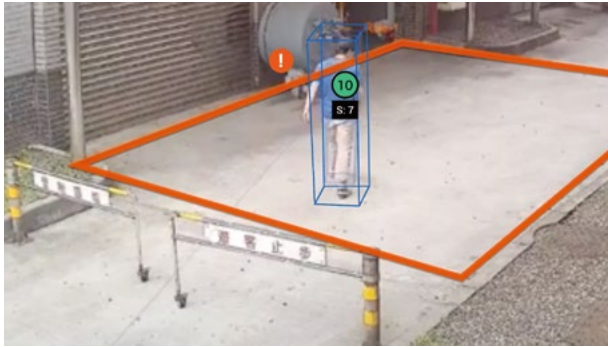
Line Crossing Detection

Detects individuals or groups of people crossing a virtual trip-wire, providing promptly alerting authorities to potential threats or unauthorized access.



Loitering Detection

Detects individuals or groups of people lingering in one area beyond a preset time threshold, offering heightened situational awareness to ensure timely responses and improved security management.



Intrusion Detection

Detects individuals entering or leaving a virtual area within the camera's field of view, delivering real-time monitoring capabilities to enhance security.



Crowd Detection

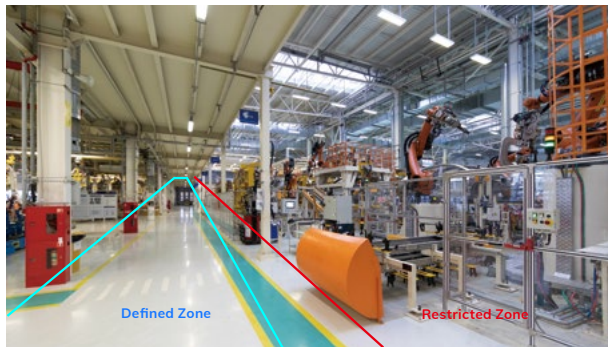
Identifies the number of individuals in a specific area. This enables stores and businesses to easily manage social distancing among customers, intelligently reducing the challenges of handling customer congestion.



Running Detection

Identifies the movement speed of individuals within a scene. In surveillance applications, high-speed running by individuals in locations like campuses, hospitals, factories, shopping malls, or banks may indicate potential abnormal situations.

Edge AI integrates artificial intelligence into cameras and sensors for real-time event analysis. Eliminating the need for a dedicated server to handle video analytics streamlines system setup and reduces overall costs. Experience increased flexibility in analytic applications, regardless of your system's deployment method.



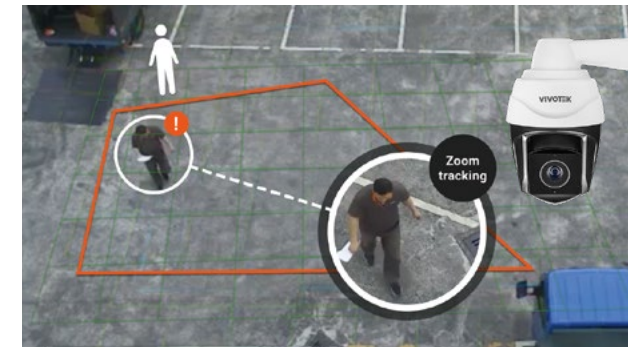
Restricted Zone Detection

Enforces security in high-risk areas by requiring individuals to obtain guest badges for entry. It can apply to various settings to prevent intrusions and secure against unauthorized access.



Facial Recognition

Automates employee clock-in reports, streamlines event sorting, and offers highly accurate facial detection. Users can assign people to groups for easier identification.



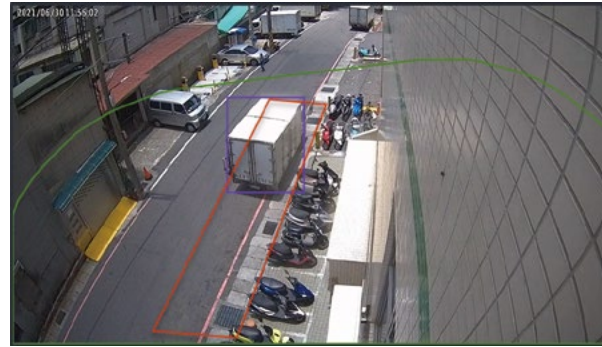
Smart Tracking Advanced

Utilizes intelligent object tracking through speed dome cameras. It is well-suited for monitoring individuals with features like intrusion detection and automated alerts.



Missing or Unattended Object Detection

Identifies the removal of a predefined asset from a scene, providing prompt alerts in case of unauthorized asset movement or potential threats.



Parking Violation Detection

Promptly alerts authorities to illegal parking, reducing traffic congestion at pickup points and preventing violations near essential areas like fire hydrants and hospitals.

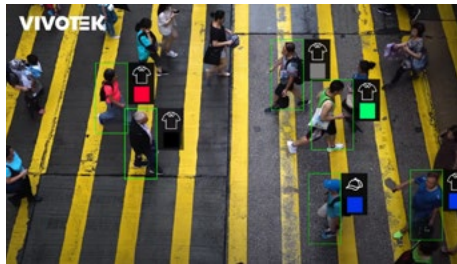


License Plate Recognition

Delivers precise data for access control. Alongside license plate and vehicle type classification, it streamlines incident searches and KYC data collection, and boosts efficiency.

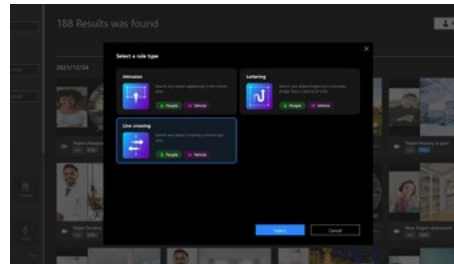
Deep Search Made Fast

Search with Ease



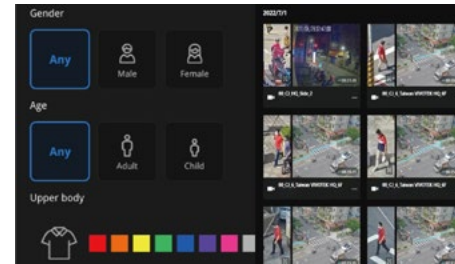
Deep Search

Revolutionize post-event search functionality through AI, offering Attribute Search, Scene Search, and Re-Search. By harnessing metadata, you can bid farewell to manual frame-by-frame video scanning. Post-event search becomes swift and effortless as you incorporate multiple attributes and rules. This feature is accessible in VSS and our latest Core+ AI NVRs.



Scene Search

Efficiently review video footage. Scene Search enables rapid review of camera footage by employing intrusion, line crossing, or loitering detection on recorded videos. For instance, with intrusion detection, simply draw a box around a point of interest, select a time frame, and instantly retrieve all instances where someone or a vehicle entered that area.



Attribute Search

Precision at your fingertips. Utilize specific attributes (e.g., gender, age group, clothing/vehicle color, vehicle type, etc.) to swiftly and accurately pinpoint individuals or vehicles of interest. Attribute Search empowers users to fine-tune their search criteria, from red vehicles to blue-shirted males.

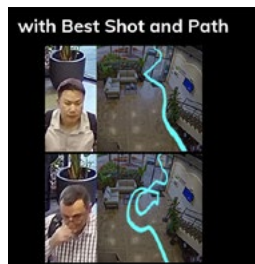


Re-Search

Tracking made easy. Once you've located a person of interest on one camera, initiate a Re-Search to track them across the entire surveillance system, spanning all cameras. This invaluable feature helps you monitor the activities of your subject throughout the property. Exclusively available on VSS Pro.

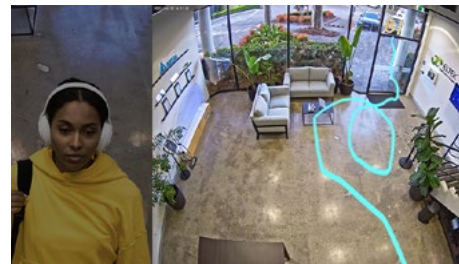
Find Your Evidence at a Glance

Turn Hours into Seconds



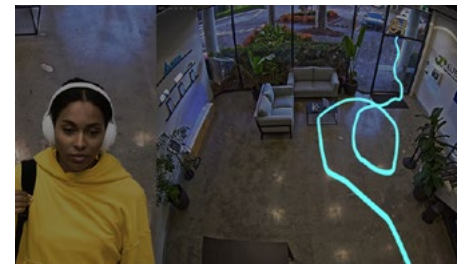
Best Shot

Captures the clearest view of a person or vehicle when they appear in front of the camera. Every search result includes a Best Shot, ensuring a clear identification of the subject of interest, even in images with multiple people or vehicles.



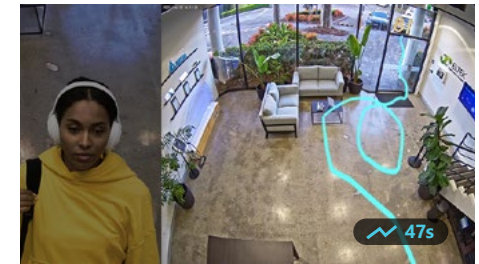
Path Extraction

Reveals the subject's trace without video playback. Accurate object tracking further minimizes duplicate search results, ensuring distinct outcomes for every search.



Start and End Location

The subject's path is marked with a clear starting and ending point, simplifying the trace identification of the person or vehicle without the need for video playback.



Duration of Stay

Displays the calculated time duration for the detected objects in the scene, empowering users to make quick, informed decisions and easily pinpoint the relevant video clip based on the calculated time in each scene.

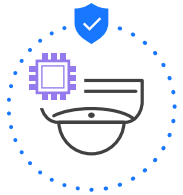
Cybersecurity

Cybersecurity Features



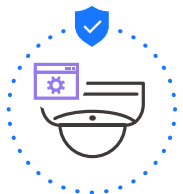
Trend-Micro IoT Security

Protects the device against brute force and cybersecurity attacks, as well as quarantine suspicious device behavior.



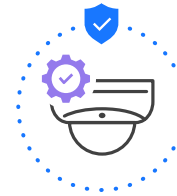
Signed Firmware

A device with signed firmware can validate the firmware before allowing installation.



Secure VADP

Secure VADP with digital signature and encryption capabilities makes it safer and more reliable for third-party integration.



Secure Boot

Secure boot ensures that unauthenticated code is rejected and protects the camera system from attacks or infections by malicious external code.



Secure Console

Permission from VIVOTEK with key based authentication is the only way to access, providing a safer connection for the surveillance system.

Cybersecurity Solution



Cybersecurity Alarm Management with Instant Alerts

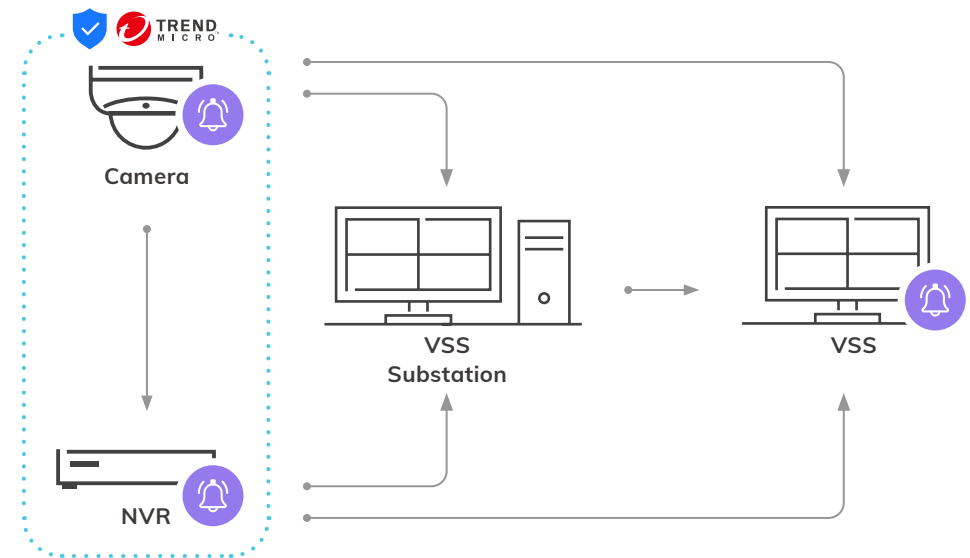
Once event notifications in network cameras and VSS VMS have been set up, VIVOTEK's surveillance solution will be immediately alerted when cyberattacks occur.








Event Reports with Cyber Risk Dashboard

Quickly know attack trend and status, and acquire attack information in order to diagnose your network promptly on VSS and NVRs.

Cybersecurity Architecture

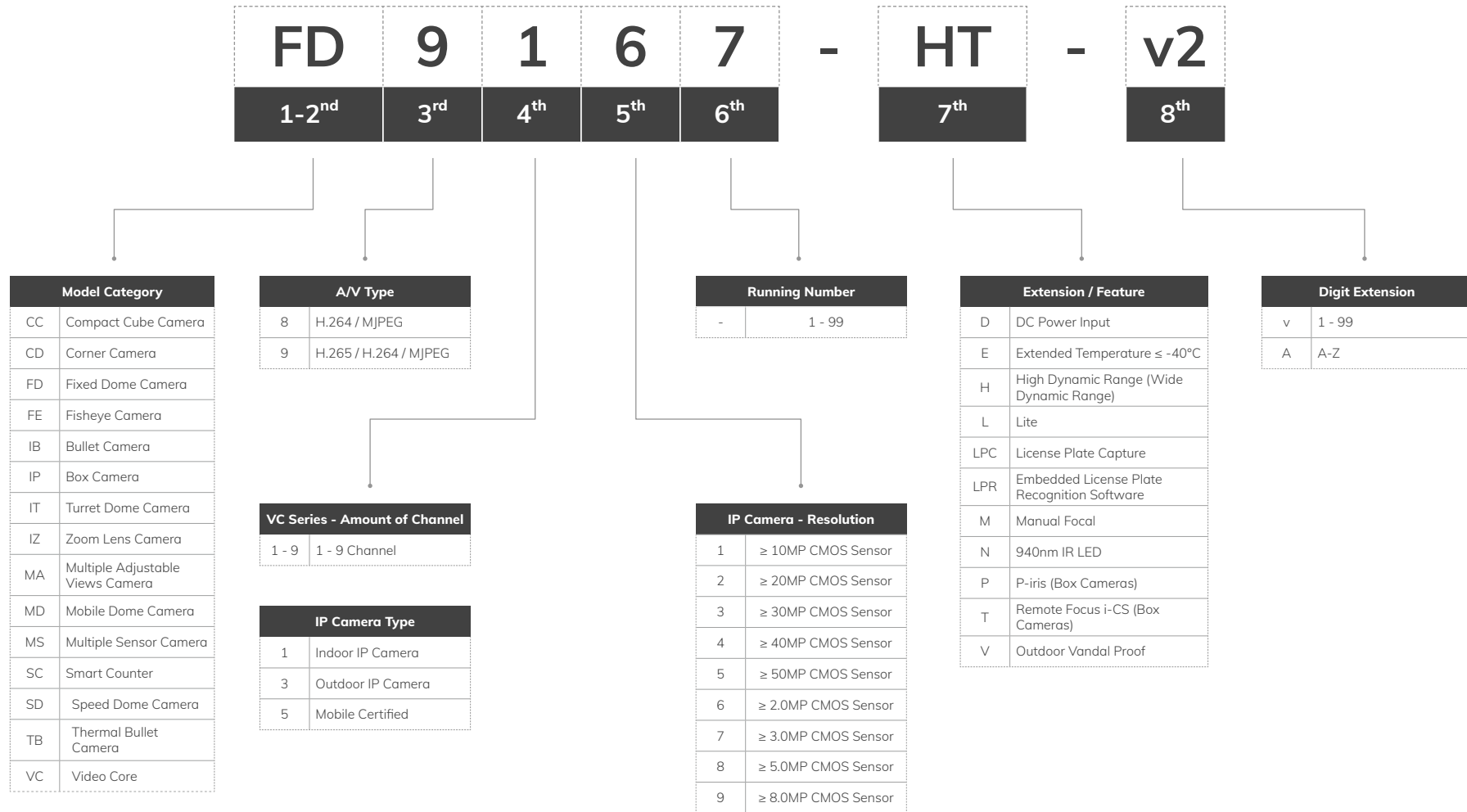


Contents

Network Cameras	14	Network Audio	41
Naming Rule	14	PoE Network Products	44
 Supreme Series.....	15	Commercial Series.....	45
 Versatile Series	20	Industrial Series.....	46
 Competitive Series.....	24	Long Range Solution.....	46
Facial Recognition	29	Outdoor Series.....	46
Video Management Software	33	PoE Accessories.....	47
VAST Security Station	33	Solution Integration Alliance	49
Network Video Recorders	36		
Naming Rule	36		
 Supreme Series.....	37		
 Versatile Series	39		

Network Cameras

Naming Rule



Network Camera

Supreme Series

Unlock the power of industry-leading analytics with Supreme series camera. Designed with a one-for-multiple form factor, it provides a broad field of view and tailored features to implement to various scenarios. See more, see smarter.

Vehicle



VIVO-123

People



Special Form Factor

Discover special form factor camera tailored to meet unique needs. Simplify setup to perfectly match niche applications.



AI Analytics

Advanced AI engine for people and vehicle detection, and activities with high image quality.



Deep Search

No needs to scroll through the video footage frame by frame. Factoring in multiple attributes and rules makes post-event search faster and easier.



Model Name	FD9391-EHTV-v2	FD9365-EHTV-v2	CD9381-HNVF2	CD9381-HNTV	IB9391-EHTV-v2
Type	8MP Dome	2MP Dome	5MP Corner Dome		8MP Bullet
Camera Features					
Image Sensor	1/1.8" Progressive CMOS	1/2" Progressive CMOS	1/2.7" Progressive CMOS		1/1.8" Progressive CMOS
Focal Length	f = 4.4 ~ 10.2 mm	f = 4 ~ 9 mm	f = 2.4 mm	f = 2.8 ~ 8 mm	f = 4.4 ~ 10.2 mm
Field of View	110° ~ 43° (H) 57° ~ 24° (V)	120° ~ 46° (H) 60° ~ 26° (V)	124° (H) 92° (V)	95° ~ 41° (H) 69° ~ 31° (V)	100° ~ 43° (H) 50° ~ 24° (V)
WDR Technology	WDR Pro	WDR Pro II	WDR Pro		
Day/Night	Yes				
Illuminators	50 meters with Smart IR III, IR LED*4		10 meters with Smart IR, IR LED*2		50 meters with Smart IR III, IR LED*4
Minimum Illumination	0.01 lux @ F1.38 (Color)	0.040 lux @ F1.3 (Color)	0.07 lux @ F2.1(Color)	0.085 lux @ F2.1(Color)	0.01 lux @ F1.38 (Color)
Pan Range	±175°		-		±180°
Storage	MicroSD/SDHC/SDXC card and NAS				
Video/ Audio/ Network					
Compression	H.265, H.264, MJPEG				
Maximum Frame Rate	30 fps @ 3840x2160	60 fps @ 1920x1080	30 fps @ 2560x1920		30 fps @ 3840x2160
Interface	Built-in microphone External microphone Input External line output		Built-in microphone External Audio Input External Audio output		External microphone input External line output
ONVIF	Profile G, S, T				
AI Analytics					
Vision Object Analytics	* Object Detection * Attribute Extraction Re-Search Extraction Path Extraction				
General					
Connectors	RJ-45 cable connector for 10/100 Mbps PoE network connection				
	Built-in Microphone Audio line input / Audio line output DC 12V power input / AC 24V power input Digital input*2 Digital output*2 Micro USB		Built-in Microphone Micro USB		Audio line input / Audio line output DC 12V power input / AC 24V power input Digital input*3 Digital output*3 Micro USB
Power Consumption	PoE: 14.25W DC 12V: 14.40W AC 24V: 11.64W	PoE: 13.11W DC 12V: 14.00W AC 24V: 10.79W	PoE: Max. 10.36 W DC 12V: Max. 9.96 W AC 24V: Max. 18 W		PoE: 19.38W DC 12V: 15.84W AC 24V: 16.52W
Dimensions	Ø 174 x 123 mm		226 x 221 x 112 mm		Ø 153 x 283 mm
Certifications	IK10+, IP66/67, NEMA 4X, IP6K9K		IK10+, IP67, IP6K9K		IK10, IP66/67, NEMA 4X
Operating Temperature	-50°C ~ 60°C (-58°F ~ 140°F)		-10°C ~ 55°C (14°F ~ 122°F)		-50°C ~ 60°C (-58°F ~ 140°F)



IB9365-EHTV-v2



FE9391-EHV-v2



FE9191-H-v2



FE9192-H



FE9382-EHV-v2

Type	2MP Bullet		12MP Fisheye		6MP Fisheye
Camera Features					
Image Sensor	1/2" Progressive CMOS		1/2.3" Progressive CMOS		1/1.8" Progressive CMOS
Focal Length	f = 4 ~ 9 mm		f = 1.22 mm		f = 1.245 mm
Field of View	100° ~ 46° (H) 52° ~ 26° (V)		180° (H) 180° (V)		
WDR Technology	WDR Pro II		WDR Pro		
Day/Night			Yes		
Illuminators	50 meters with Smart IR III, IR LED*4	20 meters (50IRE) with Smart IR II, IR LED*4	-		20 meters with Smart IR II, IR LED*4
Minimum Illumination	0.040 lux @ F1.3 (Color)		0.1 lux @ F2.0 (Color)		0.065 lux @ F1.6 (Color)
Pan Range	±180°		-		
Storage	MicroSD/SDHC/SDXC card and NAS				
Video/ Audio/ Network					
Compression			H.265, H.264, MJPEG		
Maximum Frame Rate	60 fps @ 1920x1080		30 fps @ 2944x2944		30 fps @ 2048x2048
Interface	External microphone input External line output		Built-in microphone		Built-in microphone External line output
ONVIF			Profile G, S, T		
AI Analytics					
Vision Object Analytics			* Object Detection * Attribute Extraction Re-Search Extraction Path Extraction		
General					
Connectors	RJ-45 cable connector for 10/100 Mbps Network/PoE connection				
	Audio line input Audio line output DC 12V power input AC 24V power input Digital input *3 Digital output*3 Micro USB	-			
Power Consumption	PoE: 22.23W DC 12V: 17.28W AC 24V: 18.26W	Max. 22.5 W	Max. 9 W		Max. 12.5 W
Dimensions	Ø 153 x 283 mm	Ø 150 x 68.2 mm		Ø 82 x 122 mm	Ø 150 x 68.2 mm
Certifications	IK10, IP66/67, NEMA 4X	IK10, IP66, NEMA 4X	IK10	-	IK10, IP66, NEMA 4X
Operating Temperature	-50°C ~ 60°C (-58°F ~ 140°F)	-40°C ~ 55°C (-40°F ~ 131°F)		-10°C ~ 50°C (14°F ~ 122°F)	



MS9321-EHV-V2



MA9322-EHTVL



IP9191-HT-V2



IP9165-HT-v2

Model Name	18MP Panoramic	20MP Multi-Sensor	8MP Box	2MP Box
Type	18MP Panoramic	20MP Multi-Sensor	8MP Box	2MP Box
Camera Features				
Image Sensor	1/2.8" Progressive CMOS	1/2.7" Progressive CMOS	1/1.8" Progressive CMOS	1/2" Progressive CMOS
Focal Length	f = 3.5 mm	f = 3.7 ~ 7.7mm	f = 2.8 ~ 8.5 mm	f = 3.9 ~ 10 mm
Field of View	180° (H) 62.5° (V)	88.6° ~ 40.1° (H) 61.2° ~ 28.6° (V)	119° ~ 46° (H) 63° ~ 26° (V)	110° ~ 43° (H) 59° ~ 24° (V)
WDR Technology	WDR Pro			WDR Pro II
Day/Night	Yes			
Illuminators	30 meters with Smart IR, IR LED*4	30 meters with Smart IR	-	
Minimum Illumination	0.055 lux @ F2.0 (Color)	0.035 lux @ F1.9 (Color)	0.01 lux @ F1.5 (Color)	
Pan Range	±90°	-		
Storage	MicroSD/SDHC/SDXC card and NAS			
Video/ Audio/ Network				
Compression	H.265, H.264, MJPEG			
Maximum Frame Rate	30 fps @ 6912*2624 (Deep Learning VCA OFF) 20 fps @ 6912*2624 (Deep Learning VCA ON)	12fps @ (2688x1920) x4 30fps @ (2560x1440)x4	30 fps @ 3840x2160	60 fps @ 1920x1080
Interface	Built-in microphone External microphone Input External line output	Built-in microphone	External microphone input External line output	
ONVIF	Profile G, S, T	-	Profile G, S, T	
AI Analytics				
Vision Object Analytics	* Object Detection * Attribute Extraction Re-Search Extraction Path Extraction	-	* Object Detection * Attribute Extraction Re-Search Extraction Path Extraction	
General				
	RJ-45 cable connector for 10/100/1000 Mbps Network/PoE connection			
Connectors	Audio input / Audio output AC 24V power input Digital input / Digital output	-	Audio input / Audio output AC 24V power input*1 DC 12V power input*1 Digital input*2 Digital output*2 RS485*1 BNC*1	
Power Consumption	AC 24V: Max. 26.4W PoE: Max. 18.81 W	Max: 25W	DC 12V: Max. 8.88 W AC 24V: Max. 17 W PoE: Max. 10 W	
Dimensions	308 x 167 x 130 mm	Ø 267x114 mm (Main body) Ø 275x118 mm (w/ bracket)	155 x 70 x 61 mm (w/o lens) 210 x 70 x 66 mm (w/ lens)	
Certifications	IK10, IP66, IP6K9K	IK10, IP66	-	
Operating Temperature	-40°C ~ 55°C (-40°F ~ 131°F)	-40°C ~ 50°C (-40°F ~ 122°F)	-10°C ~ 60°C (14°F ~ 140°F)	



SD9394-EHL



SD9384-EHL



SD9368-EHL



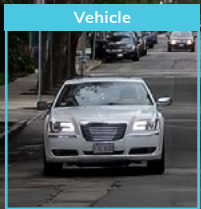
SC9133-RTL

Type	8MP Speed Dome	5MP Speed Dome	2MP Speed Dome	Counting
Camera Features				
Image Sensor	1/2.8" Progressive CMOS			1/2.8" Progressive CMOS
Focal Length	f = 6.5 ~ 212 mm	f = 4.94 ~ 148.24 mm	f = 4.25 ~ 170 mm	f = 1.47 mm
Field of View	63.5° ~ 2.0° (H) 37.4° ~ 1.1° (V)	54.1° ~ 1.9° (H) 41.2° ~ 1.4° (V)	65.7° ~ 1.9° (H) 39.4° ~ 1.1° (V)	140° (H) 140° (V)
WDR Technology	WDR Pro			WDR Enhanced
Day/Night	Yes			
Illuminators	250 meters with Smart IR, IR LED*8	200 meters with Smart IR, IR LED*8	250 meters with Smart IR, IR LED*8	White Light & IR LED
Minimum Illumination	0.02 lux @ F1.4 (Color)	0.03 lux @ F1.3 (Color)	0.04 lux @ F1.6 (Color)	0 lux with illumination on
Pan Range	360° endless			-
Storage	MicroSD/SDHC/SDXC card and NAS			MicroSD/SDHC/SDXC card
Video/ Audio/ Network				
Compression	H.265, H.264, MJPEG			
Maximum Frame Rate	30 fps @ 3840x2160	30 fps @ 2560x1920	60 fps @ 1920x1080	30 fps @ 1792 x 1792
Interface	External microphone input External line output			Built-in microphone
ONVIF	Profile G, S, T			-
AI Analytics				
Vision Object Analytics	* Object Detection * Attribute Extraction Re-Search Extraction Path Extraction			-
General				
Connectors	RJ-45 cable connector for 10/100 Mbps PoE network connection			M12 4-pin D-coded for Network/PoE M12 A-code 12-pin for DC power RS485 *2 Digital input *2 (max. 60V per port) Digital output *1
	Audio line input Audio line output DC 48V power input AC 24V power input Digital input*2 Digital output*1 RS-485*1			
Power Consumption	DC 48V: Max. 51 W AC 24V: Max. 51 W PoE: Max. 51 W			PoE: Max. 12.5 W DC: Max. 13.3 W
Dimensions	256 x 336 mm			140 (D) x 76 (W) x 42 (H) mm
Certifications	IK10, IP66, NEMA 4X			IK10, IP66
Operating Temperature	-40°C ~ 55°C (-40°F ~ 140°F)	-40°C ~ 60°C (-40°F ~ 122°F)		-30°C ~ 60°C (-22°F ~ 140°F)



Network Camera Versatile Series

Experience excellent image and powerful AI surveillance solutions with Versatile series camera. Packed with advanced, feature-rich options designed to adapt to diverse applications, it promises consistent performance and versatile functionality.



AI Analytics

Elevate your surveillance with built-in Smart VCA for precise people/vehicle detection and accurate activity monitoring.



Robust Housing & Security Design

Versatile cameras are certified to offer robust weather protection and enhance security defenses against cyber threats and attacks.



Easy Installation

These cameras feature modular design, allowing for easy installation in simple steps. This not only saves time but also reduces labor costs.


NEW FD9399-EHTV

NEW FD9399-EHV

NEW FD9199-H

NEW FD9389-EHTV-V3


FD9389-EHTV-v2

Type	8MP Outdoor Dome		8MP Indoor Dome	5MP Outdoor Dome	
Camera Features					
Image Sensor	1/1.8" Progressive CMOS	1/1.8" Progressive CMOS	1/1.8" Progressive CMOS	1/2.8" Progressive CMOS	1/2.7" Progressive CMOS
Focal Length	f = 4.3~9.8 mm	f = 4.26 mm	f = 4.26 mm	f = 3.3~9.7 mm	f = 2.8 ~ 10 mm
Field of View	95.4° ~ 28.7° (H) 68.8° ~ 21.5° (V)	100° (H) 76° (V)	100° (H) 76° (V)	95.4° ~ 28.7° (H) 68.8° ~ 21.5° (V)	95° ~ 41° (H) 69° ~ 31° (V)
WDR Technology	WDR Pro				
Day/ Night	Yes				
Illuminators	40 meters with Smart IR		30 meters with Smart IR	40 meters with Smart IR	30 meters with Smart IR, IR LED * 4
Minimum Illumination	0.04 lux @ F1.6 (Color)				0.06 lux @ F1.8 (Color)
Pan Range	±175°				>350°
Storage	MicroSD/SDHC/SDXC card and NAS				
Video/ Audio/ Network					
Compression	H.265, H.264, MJPEG				
Maximum Frame Rate	30 fps @ 3840x2160			30 fps @ 2560x1920	
Interface	Built-in microphone Two-way audio connectivity by optional cable				Built-in microphone
ONVIF	Profile G, S, T				
AI Analytics					
Vision Object Analytics	* Object Detection * Attribute Extraction Re-Search Extraction Path Extraction				** Object Detection Path Extraction
General					
Connectors	RJ-45 cable connector for Network 10/100 Mbps PoE connection				
	Built-in Microphone Interface for optional cable	Built-in Microphone Interface for optional cable HDMI output	Built-in Microphone Interface for optional cable	-	
Power Consumption	Max. 12.95 W				Max. 12.3 W
Dimensions	Ø 134 x 116 mm	Ø 120 x 89.6 mm	Ø 134 x 116 mm	Ø 129 x 94 mm	
Certifications	IK10, IP66, NEMA 4X	-	IK10, IP66, NEMA 4X	IK10, IP66	
Operating Temperature	-35°C ~ 60°C (-31°F ~ 140°F)	0°C ~ 45°C (32°F ~ 113°F)	-35°C ~ 60°C (-31°F ~ 140°F)	-40°C ~ 60°C (-40°F ~ 140°F)	



NEW FD9389-EHV-V3



FD9389-EHV-v2



FD9387-EHTV-V3



FD9189-HT-v2



NEW FD9189-H-V3

Type	5MP Outdoor Dome			5MP Indoor Dome	
Camera Features					
Image Sensor	1/2.8" Progressive CMOS	1/2.7" Progressive CMOS	1/2.8" Progressive CMOS	1/2.7" Progressive CMOS	1/2.8" Progressive CMOS
Focal Length	f = 3.0 mm	f = 2.8 mm	f = 2.7~13.5/ 7~22 mm	f = 2.8~10 mm	f = 3.0 mm
Field of View	79.6° (H) 57.8° (V)	103° (H) 76° (V)	100.1° ~ 29.9° (H), 71.8° ~ 22.4° (V) [2.7-13.5mm] 39.3° ~ 15.4° (H), 28.8° ~ 11.6° (V) [7-22mm]	95°~41° (H) 69°~31° (V)	79.6° (H) 57.8° (V)
WDR Technology	WDR Pro				
Day/ Night	Yes				
Illuminators	40 meters with Smart IR	30 meters with Smart IR, IR LED * 4	50 meters with Smart IR III, IR LED*4	30 meters with Smart IR, IR LED * 4	30 meters with Smart IR
Minimum Illumination	0.04 lux @ F1.6 (Color)	0.06 lux @ F2.0 (Color)	0.04 lux @ F1.8 (Color) [2.7-13.5mm] 0.035 lux @ F1.7 (Color) [7-22mm]	0.06 lux @ F1.8 (Color)	0.04 lux @ F1.6 (Color)
Pan Range	±175°	>350°	±175°	>350°	±175°
Storage	MicroSD/SDHC/SDXC card and NAS				
Video/ Audio/ Network					
Compression	H.265, H.264, MJPEG				
Maximum Frame Rate	30 fps @ 2560x1920				
Interface	Built-in microphone Two-way audio connectivity by optional cable	Built-in microphone	Built-in microphone External microphone Input External line output	Built-in microphone	Built-in microphone Two-way audio connectivity by optional cable
ONVIF	Profile G, S, T				
AI Analytics					
Vision Object Analytics	* Object Detection * Attribute Extraction Re-Search Extraction Path Extraction	** Object Detection Path Extraction	* Object Detection * Attribute Extraction Re-Search Extraction Path Extraction	** Object Detection Path Extraction	* Object Detection * Attribute Extraction Re-Search Extraction Path Extraction
General					
Connectors	RJ-45 cable connector for Network 10/100 Mbps PoE connection				
	Built-in Microphone Interface for optional cable	-	Built-in Microphone Audio line input / Audio line output DC 12V power input Digital input*1 / Digital output*1 Micro USB	-	Built-in Microphone HDMI output Interface for optional cable
Power Consumption	Max. 12.95 W	Max. 8.55 W	Max. 12.95 W	Max. 9.7 W	Max. 12.95 W
Dimensions	Ø 134 x 116 mm	Ø 129 x 94 mm	Ø 173.6 x 122.6 mm	Ø 130 x 95 mm	Ø 120 x 89.6 mm
Certifications	IK10, IP66, NEMA 4X	IK10, IP66	IK10+, IP66/67, NEMA 4X, IP6K9K		
Operating Temperature	-35°C ~ 60°C (-31°F ~ 140°F)	-40°C ~ 60°C (-40°F ~ 140°F)		-10°C ~ 50°C (14°F ~ 122°F)	0°C ~ 45°C (32°F ~ 113°F)



FD9189-H-v2



FD9187-HT-V3



FD9367-EHTV-v2



FD9167-HT-v2


NEW IT9399-HTVW

Model Name	FD9189-H-v2	FD9187-HT-V3	FD9367-EHTV-v2	FD9167-HT-v2	IT9399-HTVW
Type	5MP Indoor Dome		2MP Outdoor Dome	2MP Indoor Dome	8MP Turret Dome
Camera Features					
Image Sensor	1/2.7" Progressive CMOS	1/2.8" Progressive CMOS	1/2.8" Progressive CMOS	1/2.8" Progressive CMOS	1/1.8" Progressive CMOS
Focal Length	f = 2.8 mm	f = 2.7~13.5/ 7~22 mm	f = 2.7 ~ 13.5 mm	f = 2.7 ~ 13.5 mm	f = 4.3~9.8 mm
Field of View	103° (H) 76° (V)	100.1° ~ 29.9° (H), 71.8° ~ 22.4° (V) [2.7-13.5mm] 39.3° ~ 15.4° (H), 28.8° ~ 11.6° (V) [7-22mm]	110° ~ 33° (H) 55° ~ 18° (V)		95.4° ~ 28.7° (H) 68.8° ~ 21.5° (V)
WDR Technology	WDR Pro				
Day/ Night	Yes				
Illuminators	30 meters with Smart IR, IR LED * 4	50 meters with Smart IR III, IR LED*4	50 meters with Smart IR II, IR LED*4		30 meters with Smart IR/ white light
Minimum Illumination	0.06 lux @ F2.0 (Color)	0.04 lux @ F1.8 (Color) [2.7-13.5mm] 0.035 lux @ F1.7 (Color) [7-22mm]	0.035 lux @ F1.4 (Color)		0.04 lux @ F1.6 (Color)
Pan Range	>350°	±175°			
Storage	MicroSD/SDHC/SDXC card and NAS				
Video/ Audio/ Network					
Compression	H.265, H.264, MJPEG				
Maximum Frame Rate	30 fps @ 2560x1920	30 fps @ 2560x1920	60 fps @ 1920x1080		30 fps @ 3840x2160
Interface	Built-in microphone	Built-in Microphone Extend microphone input External line output			Built-in Microphone & Speaker Extend microphone input External line output
ONVIF	Profile G, S, T				
AI Analytics					
Vision Object Analytics	** Object Detection Path Extraction	* Object Detection * Attribute Extraction Re-Search Extraction Path Extraction	** Object Detection Path Extraction		* Object Detection * Attribute Extraction Re-Search Extraction Path Extraction
General					
Connectors	RJ-45 cable connector for Network 10/100 Mbps PoE connection				
	-		Built-in Microphone Audio line input / Audio line output DC 12V power input Digital input*1 / Digital output*1 Micro USB		Built-in Microphone & Speaker External microphone Input External line output Digital input*1 / Digital output*1
Power Consumption	Max. 6.3 W	Max. 12.95 W	PoE: Max. 9 W DC 12V: Max. 9 W		Max. 12.95 W
Dimensions	Ø 130 x 95 mm	Ø 173.6 x 122.6 mm	Ø 174 x 123 mm		Ø 120 x 114.5 mm
Certifications	-	IP54	IK10, IP66/67, NEMA 4X	IP54	IK10, IP66
Operating Temperature	-10°C ~ 50°C (14°F ~ 122°F)		-40°C ~ 60°C (-40°F ~ 140°F)		-10°C ~ 50°C (14°F ~ 122°F)
	-30°C ~ 50°C (-22°F ~ 122°F)				



NEW IT9399-HVW



NEW IT9389-HTVW-V3



NEW IT9389-HVW-V3



IT9389-H-v2



NEW IB9399-EHTV

Model Name	NEW IT9399-HVW		NEW IT9389-HTVW-V3		NEW IT9389-HVW-V3	IT9389-H-v2	NEW IB9399-EHTV
Type	8MP Turret Dome		5MP Turret Dome			8MP Outdoor Bullet	
Camera Features							
Image Sensor	1/1.8" Progressive CMOS		1/2.8" Progressive CMOS		1/2.8" Progressive CMOS	1/2.7" Progressive CMOS	1/1.8" Progressive CMOS
Focal Length	f = 4.26 mm		f = 3.3~9.7 mm		f = 3.0 mm	f = 2.8 mm	f = 4.3~9.8 mm
Field of View	100° (H) 76° (V)		95.4° ~ 28.7° (H) 68.8° ~ 21.5° (V)		79.6° (H) 57.8° (V)	103° (H) 76° (V)	95.4° ~ 28.7° (H) 68.8° ~ 21.5° (V)
WDR Technology				WDR Pro			
Day/ Night				Yes			
Illuminators	30 meters with Smart IR/ white light					30 meters with Smart IR LED*2	40 meters with Smart IR
Minimum Illumination	0.04 lux @ F1.6 (Color)					0.06 lux @ F2.0 (Color)	0.04 lux @ F1.6 (Color)
Pan Range	±175°					359°	-
Storage	MicroSD/SDHC/SDXC card and NAS						
Video/ Audio/ Network							
Compression	H.265, H.264, MJPEG						
Maximum Frame Rate	30 fps @ 3840x2160		30 fps @ 2560x1920			30 fps @ 2560x1920	30 fps @ 3840x2160
Interface	Built-in Microphone & Speaker External microphone Input External line output					Built-in microphone	Built-in microphone External microphone Input External line output
ONVIF	Profile G, S, T						
AI Analytics							
Vision Object Analytics	* Object Detection * Attribute Extraction Re-Search Extraction Path Extraction					** Object Detection Path Extraction	* Object Detection * Attribute Extraction Re-Search Extraction Path Extraction
General							
Connectors	RJ-45 cable connector for Network 10/100 Mbps PoE connection						
	Built-in Microphone & Speaker External microphone Input External line output Digital input*1 Digital output*1					-	Built-in Microphone External microphone Input External line output Digital input*1 Digital output*1
Power Consumption	Max. 12.95 W					Max. 7.4 W	Max. 12.95 W
Dimensions	Ø 120 x 95 mm		Ø 120 x 114.5 mm		Ø 120 x 95 mm	Ø 122 x 99 mm (w/ mounting bracket) Ø 108 x 79 mm (w/o mounting bracket)	Ø 90 x 262 mm
Certifications	IK10, IP66					IK08, IP66	IK10, IP66
Operating Temperature	-30°C ~ 50°C (-22°F ~ 122°F)					-20°C ~ 50°C (-4°F ~ 122°F)	-35°C ~ 60°C (-31°F ~ 140°F)


NEW IB9399-EHV

NEW IB9389-EHTV-V3

NEW IB9389-EHV-V3


IB9389-EHT-v2



IB9389-EH-v2

Model Name	8MP Outdoor Bullet		5MP Outdoor Bullet		
Type	8MP Outdoor Bullet		5MP Outdoor Bullet		
Camera Features					
Image Sensor	1/1.8" Progressive CMOS		1/2.8" Progressive CMOS		1/2.7" Progressive CMOS
Focal Length	f = 4.26 mm		f = 3.3~9.7 mm	f = 3.0 mm	f = 2.8~10 mm
Field of View	76° (H) 56° (V)		95°~41° (H) 69°~31° (V)	76° (H) 56° (V)	95° ~ 41° (H) 69° ~ 31° (V)
WDR Technology	WDR Pro				
Day/ Night	Yes				
Illuminators	40 meters with Smart IR			30 meters with Smart IR LED*4	
Minimum Illumination	0.04 lux @ F1.6 (Color)			0.06 lux @ F1.8 (Color)	0.06 lux @ F2.0 (Color)
Pan Range	-				
Storage	MicroSD/SDHC/SDXC card and NAS				
Video/ Audio/ Network					
Compression	H.265, H.264, MJPEG				
Maximum Frame Rate	30 fps @ 3840x2160		30 fps @ 2560x1920		30 fps @ 2560x1920
Interface	Built-in microphone External microphone Input External line output			-	
ONVIF	Profile G, S, T				
AI Analytics					
Vision Object Analytics	* Object Detection * Attribute Extraction Re-Search Extraction Path Extraction			** Object Detection Path Extraction	
General					
Connectors	RJ-45 cable connector for Network 10/100 Mbps PoE connection				
	Built-in Microphone External microphone Input External line output Digital input*1 Digital output*1			-	
Power Consumption	Max. 12.95 W			Max. 11 W	Max. 12.95 W
Dimensions	Ø 90 x 262 mm			Ø 88 x 308 mm	Ø 86 x 300 mm
Certifications	IK10, IP66				
Operating Temperature	-35°C ~ 60°C (-31°F ~ 140°F)			-40°C ~ 60°C (-40°F ~ 140°F)	



IB9387-EHTT-V3



IB9367-EHT-v2



MS9390-EHV-v2



NEW CC9390-HV



NEW CC9391-HV

Model Name	IB9387-EHTT-V3	IB9367-EHT-v2	MS9390-EHV-v2	NEW CC9390-HV	NEW CC9391-HV
Type	5MP Outdoor Bullet		2MP Outdoor Bullet	8MP Panoramic	
Camera Features					
Image Sensor	1/2.8" Progressive CMOS		1/2.8" Progressive CMOS	1/2.7" Progressive CMOS	
Focal Length	f = 2.7~13.5/ 7~22/ 12-40 mm		f = 2.7~13.5/ 5~50 mm	f = 2.8 mm	
Field of View	100.1° ~ 29.9° (H), 71.8° ~ 22.4° (V) [2.7-13.5mm] 39.3° ~ 15.4° (H), 28.8° ~ 11.6° (V) [7-22mm] 24.2° ~ 8.3° (H), 18° ~ 6.3° (V) [12-40mm]		105° ~ 33° (H), 55° ~ 18° (V) [2.7-13.5mm] 47° ~ 8° (H), 26° ~ 5° (V) [5-50mm]	180° (H) 50° (V)	
WDR Technology	WDR Pro				
Day/ Night	Yes				
Illuminators	50 meters with Smart IR III, IR LED*4 [2.7-13.5/7-22mm] 100 meters with Smart IR III, IR LED*4 [12-40mm]		50 meters with Smart IR II, IR LED*4 [2.7-13.5mm] 100 meters with Smart IR II, IR LED*4 [5-50mm]	20 meters with Smart IR , IR LED*8	
Minimum Illumination	0.04 lux @ F1.8 (Color) [2.7-13.5mm] 0.035 lux @ F1.7 (Color) [7-22mm] 0.075 lux @ F2.2 (Color) [12-40mm]		0.035 lux @ F1.4 (Color) [2.7-13.5mm] 0.040 lux @ F2.0 (Color) [5-50mm]	0.018 lux @ F1.2 (Color)	
Pan Range	-		±180°	-	
Storage	MicroSD/SDHC/SDXC card and NAS				
Video/ Audio/ Network					
Compression	H.265, H.264, MJPEG				
Maximum Frame Rate	30 fps @ 2560x1920		60 fps @ 1920x1080	30 fps @ 4864x1632	
Interface	External microphone input External line output			Built-in microphone	
ONVIF	Profile G, S, T				
AI Analytics					
Vision Object Analytics	* Object Detection * Attribute Extraction Re-Search Extraction Path Extraction		** Object Detection Path Extraction	* Object Detection * Attribute Extraction Re-Search Extraction Path Extraction	
General					
Connectors	RJ-45 cable connector for Network 10/100 Mbps PoE connection				
	Built-in Microphone Audio line input / Audio line output DC 12V power input Digital input*1 / Digital output*1 Micro USB		Audio input / Audio output DC 12V power input Digital input / Digital output	-	
Power Consumption	Max. 12.95 W		PoE: Max. 10.77 W DC 12V: Max. 9W	Max. 20 W	
Dimensions	Ø 153 x 285.7 mm		Ø 153 x 288 mm	165 x 112 x 97 mm (w/o sunshield) 165 x 100 x 119 mm (w/ sunshield)	
Certifications	IK10, IP66/67, NEMA 4X			IK10, IP66	
Operating Temperature	-40°C ~ 60°C (-40°F ~ 140°F)		-40°C ~ 55°C (-40°F ~ 131°F)	-30°C ~ 55°C (-13°F ~ 131°F)	
				-30°C ~ 60°C (-13°F ~ 140°F)	



Model Name

NEW CC9380-HV-V2**NEW** CC9381-HV-V2

IP9181-HT-V2

SD9161-H-v2

VC9101

Type	5MP Panoramic		5MP Box	2MP Indoor Speed Dome	Split Type Camera
Camera Features					
Image Sensor	1/2.8" Progressive CMOS		1/2.8" Progressive CMOS	1/2.8" Progressive CMOS	1/2.7" Progressive CMOS
Focal Length	f = 1.47 mm		f = 2.8 ~ 8.5 mm	f = 5.1 ~ 51 mm	Pinhole CU9171-H(F): f = 3.7 mm Fisheye CU9183-H(F): f = 1.22 mm
Field of View	180° (H) 120° (V)		106.8° ~ 36.4° (H) 77.4° ~ 27.3° (V)	55.2° ~ 7.1° (H) 31.8° ~ 4.1° (V)	CU9171-H(F): 93° (H), 48° (V) CU9183-H(F): 180° (H), 180° (V)
WDR Technology	WDR Pro				
Day/Night	Yes				
Illuminators	-	20 meters with Smart IR, IR LED*4		-	
Minimum Illumination	0.08 lux (Color, 30IRE)		0.01 lux @ F1.2 (Color)	0.14 lux @ F1.6 (Color)	CU9171-H(F): 0.045 lux @ F2.5 (Color) CU9183-H(F): 0.035 lux @ F2.0 (Color)
Pan Range	-			360° endless	-
Storage	MicroSD/SDHC/SDXC card and NAS				
Video/ Audio/ Network					
Compression	H.265, H.264, MJPEG				
Maximum Frame Rate	30 fps @ 2560x1920		30 fps @ 2560x1920	60 fps @ 1920x1080	CU9171-H(F): 30 fps @ 2688x1520 CU9183-H(F): 30 fps @ 1920x1920
Interface	Built-in microphone			External microphone input External line output	
ONVIF	Profile G, S, T				
AI Analytics					
Vision Object Analytics	* Object Detection * Attribute Extraction Re-Search Extraction Path Extraction				-
General					
RJ-45 cable connector for Network 10/100 Mbps PoE connection					
Connectors	-		Audio input / Audio output AC 24V power input*1 / DC 12V power input*1 Digital input*2 / Digital output*2 RS485*1 BNC*1	Audio line input / Audio line output AC/DC 24V power input Digital input*2 / Digital output*1	Audio line input / Audio line output DC 12V power input Digital input*1 / Digital output*1
Power Consumption	Max. 9.12W	Max. 10.26W	DC 12V: Max. 8.88 W AC 24V: Max. 17 W PoE: Max. 10 W	PoE: Max. 17W AC/DC 24V: Max. 17 W	Max. 8.5 W
Dimensions	115 x 65 x 59 mm	160 x 72 x 60 mm	155 x 70 x 61 mm (w/o lens) 210 x 70 x 66 mm (w/ lens)	Ø 172 x 157 mm	105 (W) x 84 (D) x 30 (H) mm
Certifications	IK10, IP66			-	
Operating Temperature	-30°C ~ 55°C (-13°F ~ 131°F)	-30°C ~ 60°C (-13°F ~ 140°F)	-10°C ~ 60°C (14°F ~ 140°F)	-10°C ~ 55°C (14°F ~ 131°F)	-30°C ~ 50°C (-22°F ~ 122°F)

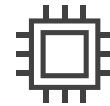
Network Camera Competitive Series

Explore essential video and audio functions paired with basic video analytics. Fulfill key demands with reliable and stable performance.



Amazing Bandwidth Control

Elevate surveillance with VIVOTEK Smart Stream technology. Prioritize crucial details, reduce bandwidth, and enjoy good image quality effortlessly.



Everyday Analytics

Enhance the camera's value with essential video analytics for smarter and more efficient target achievement.



Cost Effective

Lower costs to provide more competitive offerings with stable performance.



FD9388-HTV



NEW FD9383-HTV



NEW FD9383-HV



NEW FD9380-HTV-V2



NEW FD9380-HV-V2

Type	5MP Outdoor Dome				
Camera Features					
Image Sensor	1/2.7" Progressive CMOS	1/2.8" Progressive CMOS	1/2.8" Progressive CMOS	1/2.7" Progressive CMOS	1/2.7" Progressive CMOS
Focal Length	f = 2.8 ~ 12mm	f = 2.8 ~ 12mm	f = 3.6mm	f = 2.7 ~ 13.5mm	f = 2.8 mm
Field of View	90° ~ 30° (H) 65° ~ 23° (V)	95.4° ~ 28.7° (H) 68.8° ~ 21.5° (V)	79.6° (H) 57.8° (V)	111.0° ~ 32.2° (H) 57.0° ~ 18.0° (V)	111.0° (H) 59.0° (V)
WDR Technology	WDR Pro				
Day/Night	Yes				
Illuminators	30 meters with Smart IR, IR LED*2				
Minimum Illumination	0.035 lux @ F1.4 (Color)	0.04 lux @ F1.6 (Color)	0.055 lux @ F2.0 (Color)	0.04 lux @ F1.6 (Color)	0.055 lux @ F2.0 (Color)
Pan Range	353°		350°		
Storage	MicroSD/SDHC/SDXC card and NAS				
Video/ Audio/ Network					
Compression	H.265, H.264, MJPEG				
Maximum Frame Rate	20 fps @ 2560x1920	30 fps @ 2560x1920		30fps@2880x1616	
Interface	Built-in microphone	Built-in microphone	-	Built-in microphone	-
ONVIF	-			Profile G, S, T	
AI Analytics					
Vision Object Analytics	-	* Object Detection * Attribute Extraction Re-Search Extraction Path Extraction"		* Object Detection Path Extraction	
General					
Connectors	RJ-45 cable connector for Network 10/100 Mbps PoE connection				
Power Consumption	Max. 12.95 W	Max. 9.7 W	Max. 8.5 W	Max 7.8W	Max 5.2W
Dimensions	Ø 133.7 x 103.8 mm	Ø 133.7mm x 103.8mm	Ø 117.2 x 89.6 mm	Ø 133.7mm x 103.8mm	Ø 117.2 x 89.6 mm
Certifications	IK10, IP66				
Operating Temperature	-30°C ~ 60°C (-22°F ~ 140°F)	-30°C ~ 55°C (-22°F ~ 131°F)		-30°C ~ 60°C (-22°F ~ 140°F)	



FD9380-H



FD9182-H



FD9369



FD9368-HTV



FD9366-HV

Type	5MP Outdoor Dome	5MP Recessed	2MP Outdoor Dome		
Camera Features					
Image Sensor	1/2.7" Progressive CMOS	1/2.7" Progressive CMOS	(1/3.1" Progressive CMOS)	1/2.9" Progressive CMOS	1/2.9" Progressive CMOS
Focal Length	f = 2.8/ 3.6 mm	f = 2.8 mm	f = 2.8 mm	f = 2.8 ~ 12mm	f = 2.8/ 3.6 mm
Field of View	103° (H), 76° (V) [2.8mm] 76° (H), 59° (V) [3.6mm]	103° (H) 76° (V)	116° (H) 65° (V)	93° ~ 32° (H) 50° ~ 18° (V)	108° (H), 60° (V)[2.8mm] 89° (H), 47° (V) [3.6mm]
WDR Technology	WDR Pro		WDR Enhanced		WDR Pro
Day/Night	Yes				
Illuminators	30 meters with Smart IR, IR LED*2	-	30 meters with Smart IR, IR LED*1	30 meters with Smart IR, IR LED*2	20 meters with Smart IR, IR LED*2
Minimum Illumination	0.03 lux @ F2.0 (Color)	0.03 lux @ F2.0 (Color)	0.08 lux @ F2.0 (Color)	0.055 lux @ F1.4 (Color)	0.13 lux @ F1.8 (Color) [2.8mm] 0.15 lux @ F2.0 (Color) [3.6mm]
Pan Range	350°	±80°	350°	353°	±30°
Storage	MicroSD/SDHC/SDXC card and NAS				
Video/ Audio/ Network					
Compression	H.265, H.264, MJPEG				
Maximum Frame Rate	20 fps @ 2560x1920	20 fps @ 2560x1920	30 fps @ 1920x1080	30 fps @ 1920x1080	30 fps @ 1920x1080
Interface	-	Build-in microphone	Built-in microphone	Built-in microphone	Built-in microphone External line input
ONVIF	Profile G, S, T				
AI Analytics					
Vision Object Analytics	-				
General					
Connectors	RJ-45 cable connector for Network 10/100 Mbps PoE connection				Audio line input Digital input (30V, 1A) Digital output (12V, 50mA)
Power Consumption	Max. 6.49 W	Max. 3.6W	Max. 6 W	Max. 12.95 W	Max. 5.5 W
Dimensions	Ø 117.2 x 89.6 mm	Ø 82 x 122 mm	Ø 110 x 85 mm	Ø 133.7 x 103.8 mm	Ø 98 x 54 x 110.8 mm
Certifications	IK10, IP66	IK10	IK10, IP66	IK10, IP66	IK10, IP66/67
Operating Temperature	-30°C ~ 60°C (-22°F ~ 140°F)	-10°C ~ 50°C (14°F ~ 140°F)	-30°C ~ 55°C (-22°F ~ 131°F)	-30°C ~ 60°C (-22°F ~ 140°F)	-25°C ~ 60°C (-13°F~ 140°F)



FD9166-HN



IT9388-HT



NEW IT9380-HTV-V2



NEW IT9380-HV-V2



IT9380-H

Type	2MP Indoor Dome		5MP Turret Dome		
Camera Features					
Image Sensor	1/2.9" Progressive CMOS	1/2.7" Progressive CMOS	1/2.7" Progressive CMOS	1/2.7" Progressive CMOS	1/2.7" Progressive CMOS
Focal Length	f = 2.8/ 3.6 mm	f = 2.8 ~ 12mm	f = 2.7 ~ 13.5mm	f = 2.8 mm	f = 2.8/ 3.6 mm
Field of View	109° (H), 59° (V) [2.8mm] 89° (H), 47° (V) [3.6mm]	90° ~ 30° (H) 65° ~ 23° (V)	111.0° ~ 32.2° (H) 57.0° ~ 18.0° (V)	111.0° (H) 59.0° (V)	103° (H), 76° (V) [2.8mm] 76° (H), 59° (V) [3.6mm]
WDR Technology	WDR Pro				
Day/Night	Yes				
Illuminators	10 meters with Smart IR, IR LED*4	30 meters with Smart IR, IR LED*2			
Minimum Illumination	0.07 lux @ F1.8 (Color) [2.8mm] 0.16 lux @ F2.0 (Color) [3.6mm]	0.035 lux @ F1.4 (Color)	0.04 lux @ F1.6 (Color)	0.055 lux @ F2.0 (Color)	0.03 lux @ F2.0 (Color)
Pan Range	±30°	360°	350°	350°	360°
Storage	MicroSD/SDHC/SDXC card and NAS				
Video/ Audio/ Network					
Compression	H.265, H.264, MJPEG				
Maximum Frame Rate	30 fps @ 1920x1080	20 fps @ 2560x1920	30fps @ 2880x1616	30fps @ 2880x1616	20 fps @ 2560x1920
Interface	Built-in microphone				
ONVIF	-	-	Profile G, S, T		-
AI Analytics					
Vision Object Analytics	-	-	* Object Detection Path Extraction	* Object Detection Path Extraction	-
General					
Connectors	RJ-45 cable connector for Network 10/100 Mbps PoE connection				
	Digital input (30V, 1A)	-			
Power Consumption	Max. 5.5 W	Max. 9.8 W	Max 7.8W	Max 5.2W	Max. 6 W
Dimensions	Ø 90 x 50mm	Ø 120 x 90.5 mm	Ø 120 x 90.5 mm	Ø 105 x 82.8 mm	Ø 105 x 82.5 mm
Certifications	-	IK10, IP66			
Operating Temperature	-10°C ~55°C (14°F~ 131°F)	-30°C ~ 60°C (-22°F ~ 140°F)	-30°C ~ 60°C (-22°F ~ 140°F)	-30°C ~ 60°C (-22°F ~ 140°F)	-20°C ~ 60°C (-4°F ~ 140°F)



IT9360-H



IB9388-HT



NEW IB9383-HTV



NEW IB9383-HV



IB9380-H

Type	2MP Turret Dome		5MP Bullet		
Camera Features					
Image Sensor	1/2.9" Progressive CMOS	1/2.7" Progressive CMOS	1/2.8" Progressive CMOS		1/2.7" Progressive CMOS
Focal Length	f = 2.8/ 3.6 mm	f = 2.8 ~ 12 mm	f = 2.8 ~ 12mm	f = 3.6 mm	f = 3.6mm
Field of View	109° (H), 59° (V) [2.8mm] 81° (H), 44° (V) [3.6mm]	90°~ 30° (H) 65° ~ 23° (V)	95.4° ~ 28.7° (H) 68.8° ~ 21.5° (V)	79.6° (H) 57.8° (V)	76° (H) 59° (V)
WDR Technology	WDR Pro				
Day/Night	Yes				
Illuminators	30 meters with Smart IR, IR LED*2				
Minimum Illumination	0.065 lux @ F2.0 (Color)	0.035 lux @ F1.4 (Color)	0.04 lux @ F1.6 (Color)	0.055 lux @ F2.0 (Color)	0.03 lux @ F2.0 (Color)
Pan Range	360°	-			
Storage	MicroSD/SDHC/SDXC card and NAS				
Video/ Audio/ Network					
Compression	H.265, H.264, MJPEG				
Maximum Frame Rate	30 fps @ 1920x1080	20 fps @ 2560x1920	30 fps @ 2560x1920		20 fps @ 2560x1920
Interface	Built-in microphone	-	Built-in microphone		-
ONVIF	Profile G, S, T				
AI Analytics					
Vision Object Analytics	-	* Object Detection * Attribute Extraction Re-Search Extraction Path Extraction			-
General					
Connectors	RJ-45 cable connector for Network 10/100 Mbps PoE connection				
Power Consumption	Max. 6 W	Max. 12.95 W	Max. 12.4 W	Max. 10.6 W	Max. 6.49 W
Dimensions	Ø 105 x 82.5 mm	85 x 85 x 214.5 mm	Ø 91.0 x 226.6 mm	Ø 91.0 x 226.6 mm	Ø 91 x 176.8 mm
Certifications	IK10, IP66				
Operating Temperature	-20°C ~ 60°C (-4°F ~ 140°F)	-30°C ~ 60°C (-22°F ~ 140°F)	-30°C ~ 55°C (-22°F ~ 131°F)		-30°C ~ 60°C (-22°F ~ 140°F)



IB9368-HT



IB9369



FE9380-HV



FE9180-H-v2



CC9381-HV

Type	2MP Bullet		5MP Fisheye		5MP Panoramic
Camera Features					
Image Sensor	1/3.1" Progressive CMOS	1/2.9" Progressive CMOS	1/2.7" Progressive CMOS	1/2.7" Progressive CMOS	1/2.7" Progressive CMOS
Focal Length	f = 2.8/ 3.6 mm	f = 2.8 ~ 12 mm	f = 1.16 mm	f = 1.16 mm	f = 1.45 mm
Field of View	118° (H), 65° (V) [2.8 mm] 90° (H), 49° (V) [3.6 mm]	93° ~ 32° (H) 50° ~ 18° (V)	180° (H) 180° (V)		180° (H) 120° (V)
WDR Technology	WDR Enhanced		WDR Pro		
Day/Night	Yes				
Illuminators	Built-in IR illuminators, effective up to 30 meters with Smart IR, IR LED*1	30 meters with Smart IR, IR LED*2	20 meters (50IRE) with Smart IR II, IR LED*4	-	Built-in IR illuminators, effective up to 15 meters with Smart IR, IR LED*4
Minimum Illumination	0.08 lux @ F2.0 (Color) [2.8mm] 0.1 lux @ F2.0 (Color) [3.6mm]	0.055 lux @ F1.4 (Color)	0.05 lux @ F2.25 (Color)		0.11 lux @ F2.2 (Color)
Pan Range	-				
Storage	MicroSD/SDHC/SDXC card and NAS				
Video/ Audio/ Network					
Compression	H.265, H.264, MJPEG				
Maximum Frame Rate	30 fps @ 1920x1080	30 fps @ 1920x1080	30 fps @ 1920x1920		30 fps @ 2560x1920
Interface	-		Built-in microphone		
ONVIF	Profile G, S, T				
AI Analytics					
Vision Object Analytics	-				
General					
Connectors	RJ-45 cable connector for 10/100Mbps Network/PoE connection				
Power Consumption	Max. 6 W	Max. 12.95 W	Max. 22.5 W	Max. 9 W	Max. 9.12 W
Dimensions	Ø 91.1 x 181.5 mm	85 x 85 x 214.5 mm	Ø 150 x 68.2 mm		160 x 72 x 60 mm (Dome to rear panel) 39 mm (Flat to rear panel)
Certifications	IK10, IP66		IK10, IP66, NEMA 4X	-	IK10, IP66
Operating Temperature	-30°C ~ 55°C (-22°F ~ 131°F)	-30°C ~ 60°C (-22°F ~ 140°F)	-40°C ~ 55°C (-40°F ~ 131°F)	-10°C ~ 50°C (14°F ~ 122°F)	-30°C ~ 50°C (-22°F ~ 122°F)



CC9380-HV



CC9160-H



CC9160-H(HS)

Type	5MP Panoramic		2MP Panoramic	
Camera Features				
Image Sensor	1/2.7" Progressive CMOS		1/2.8" Progressive CMOS	1/2.8" Progressive CMOS
Focal Length	f = 1.45 mm		f = 1.66 mm	f = 1.66 mm
Field of View	180° (H) 120° (V)		180° (H) 100° (V)	
WDR Technology	WDR Pro			
Day/Night	Yes			
Illuminators	-		-	-
Minimum Illumination	0.11 lux @ F2.2 (Color)		0.03 lux @ F1.95 (Color)	
Pan Range	-			
Storage	MicroSD/SDHC/SDXC card and NAS			
Video/ Audio/ Network				
Compression	H.265, H.264, MJPEG			
Maximum Frame Rate	30 fps @ 2560x1920		30 fps @ 1920x1080	
Interface	Built-in microphone			-
ONVIF	Profile G, S, T			
AI Analytics				
Vision Object Analytics	-			
General				
Connectors	RJ-45 cable connector for 10/100Mbps Network/PoE connection			
	-	Digital input Digital output		
Power Consumption	Max. 5 W		Max. 5 W	
Dimensions	115 x 65 x 59 mm		52 x 120 x 39 mm (camera body) 61 x 147 x 41 mm (w/ bracket)	868 x 28 x 49.3 mm
Certifications	IK10, IP66		-	
Operating Temperature	-30°C ~ 50°C (-22°F ~ 122°F)		-10°C ~ 45°C (14°F ~ 113°F)	

Facial Recognition

Hands Free Solution for Access Control



Hands-Free Access Control

Detect facial profiles and match with profiles in the database, achieving true hands-free access control.



Accurate Authentication

Facial images are captured and verified in real-time, providing 99% accurate authentication.



Huge Capacity of Facial Profiles

Enable to store up to 50,000 facial profiles. Administrators can categorize profiles into different groups and grant varied credentials to each group.

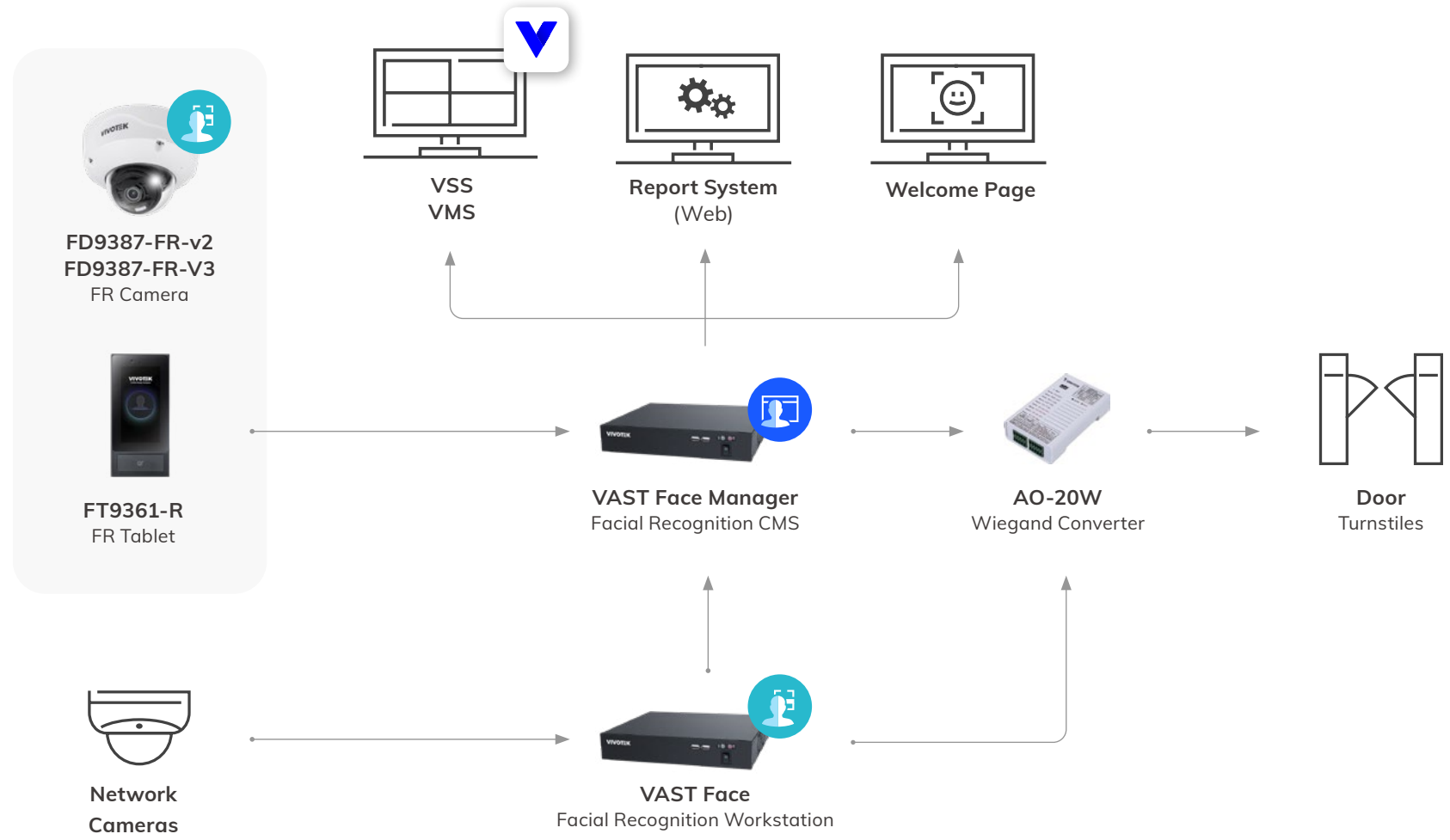


Dual Accreditation Available

Employees must meet both facial and card reader verification in order to pass through, strengthening security to a higher level.

* VAST Face FR CMS license required

Facial Recognition Architecture





Model Name

NEW FD9387-FR-V3

FD9387-FR-v2

Type	Facial Recognition Camera	
Camera Features		
Lens Type	Motorized, Vari-focal, Remote Focus	
Focal Length	f= 7 ~ 22 mm	f= 2.7~ 13.5 mm
WDR Technology	WDR Pro	
Storage	MicroSD/SDHC/SDXC card and NAS	
Video/ Audio/ Network		
Compression	H.265, H.264, MJPEG	
Maximum Frame Rate	30 fps @ 2560x1920	
Audio Capability	Two-way audio (Full duplex)	
Interface	Built-in microphone External microphone Input External line output	External microphone Input External line output
Facial Recognition		
Performance	Up to 99% accuracy Supports recognition with mask Gender and age estimatio Privacy mode	
Numbers of face captures	30 faces per second	
Profile database	Up to 10,000 profiles	
Automatic create profilef or stranger	Yes	
Recognition Range	10M	5M
Integration	ONVIF profile S event push; HTTP/HTTPS Push in JSON format	
General		
Connectors	RJ-45 cable connector for 10/100 Mbps PoE network connection	
	Built-in Microphone Audio line input Audio line output DC 12V power input Digital input*1 Digital output*1 Micro USB	Audio line input Audio line output DC 12V power input AC 24V power input Digital input*2 Digital output*1
Power Input	DC 12V, PoE	AC 24V, DC 12V, PoE
Dimensions	Ø 173.6 x 122.6 mm	Ø 155 x 103.2 mm
Weight	1.30 kg	909 g
Certifications	IK10+, IP66/67, NEMA 4X, IP6K9K	IK10, IP66/67
Operating Temperature	-40°C ~ 60°C (-40°F ~ 140°F)	-30°C ~ 60°C (-22°F ~ 140°F)



Model

FT9361-R

Type	Facial Recognition Tablet
ROM	8GB
IR Camera	1.3M @1280x1080
RGB Camera	1920x1080(2M)
WDR	RGB > 100dB
Low Lux	RGB < 0.01 lux @F1.2 IR < 0.01 lux @F1.2
Wiegand	24,26,36 bits
Recognition Distance	0.3M-1.5M
Recognition Speed	< 1 sec
Database Size	50,000 Profiles (Max.)
Audio	Built-in speaker
Dimensions	221.1 x 103.6 x 26.5 mm
Operating Temperature	20°C ~ 60°C / -4°F ~ 140°F
IP Ranking	IP65

* All specifications are subject to change without notice.



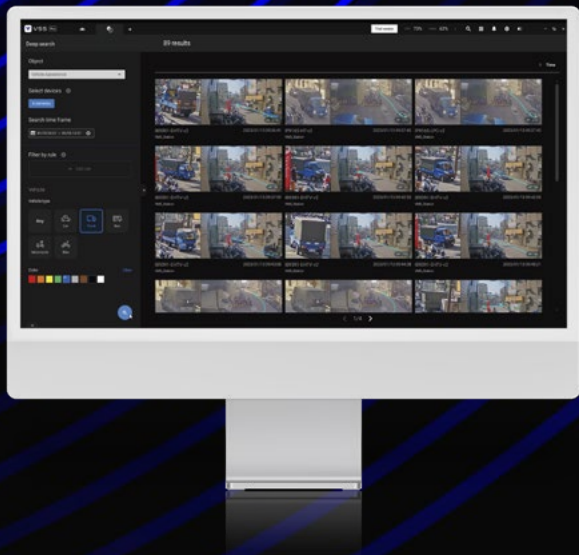
Model	IE9281-FM	IE9232-F
Type	VAST Face Manager	VAST Face Workstation
Hardware	Intel CPU: i7 Memory: DDR4 32GB RAM HDD: 2.5" 500GB SSD	Intel CPU: i7 Memory: DDR4 32GB RAM HDD: 2.5" 500GB SSD
OS	Linux	
Maximum Number of Faces in Database	50,000	
Maximum Number of Connected Devices	Up to 256	Up to 6
Power Input	100-240V AC	
Power Consumption	Max. 90W	
Dimensions	250 x 44.2 x 225 mm	
Weight	4 kg	
Safety Certifications	CE, FCC	
Support Device	FD9387-FR-V2&V3 FT9361-R IE9232-F	H.264 video stream via RTSP
Push Notification	Line, WhatsApp, Json, E-Mail	

* All specifications are subject to change without notice.

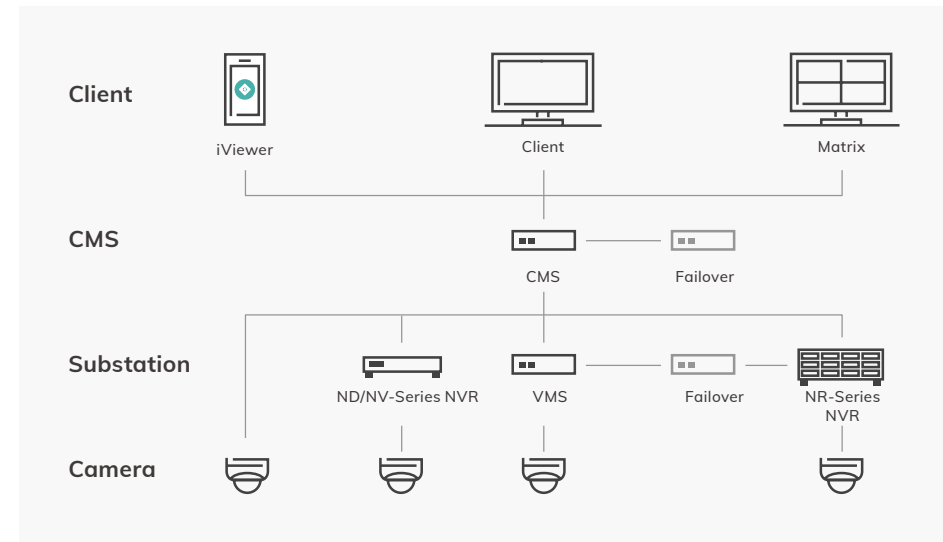
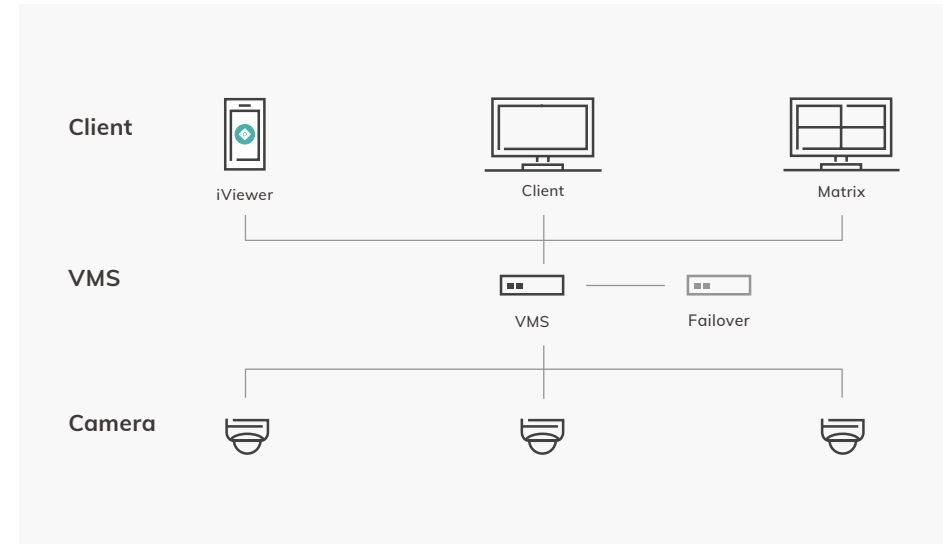
Video Management Software

VAST Security Station

VAST Security Station (VSS) is the next generation of VIVOTEK video management software. VSS expands the capabilities of previous VMS VAST 2, with newly added features including Enhanced User Defined Roles, Encrypted Video Recordings, and AI-based advanced post-event search function **Deep Search**. VSS is available in 3 different editions (Lite, Standard, Professional) to support security projects of all sizes, from small localized opportunities to multi-location enterprise operations.



VSS Architecture





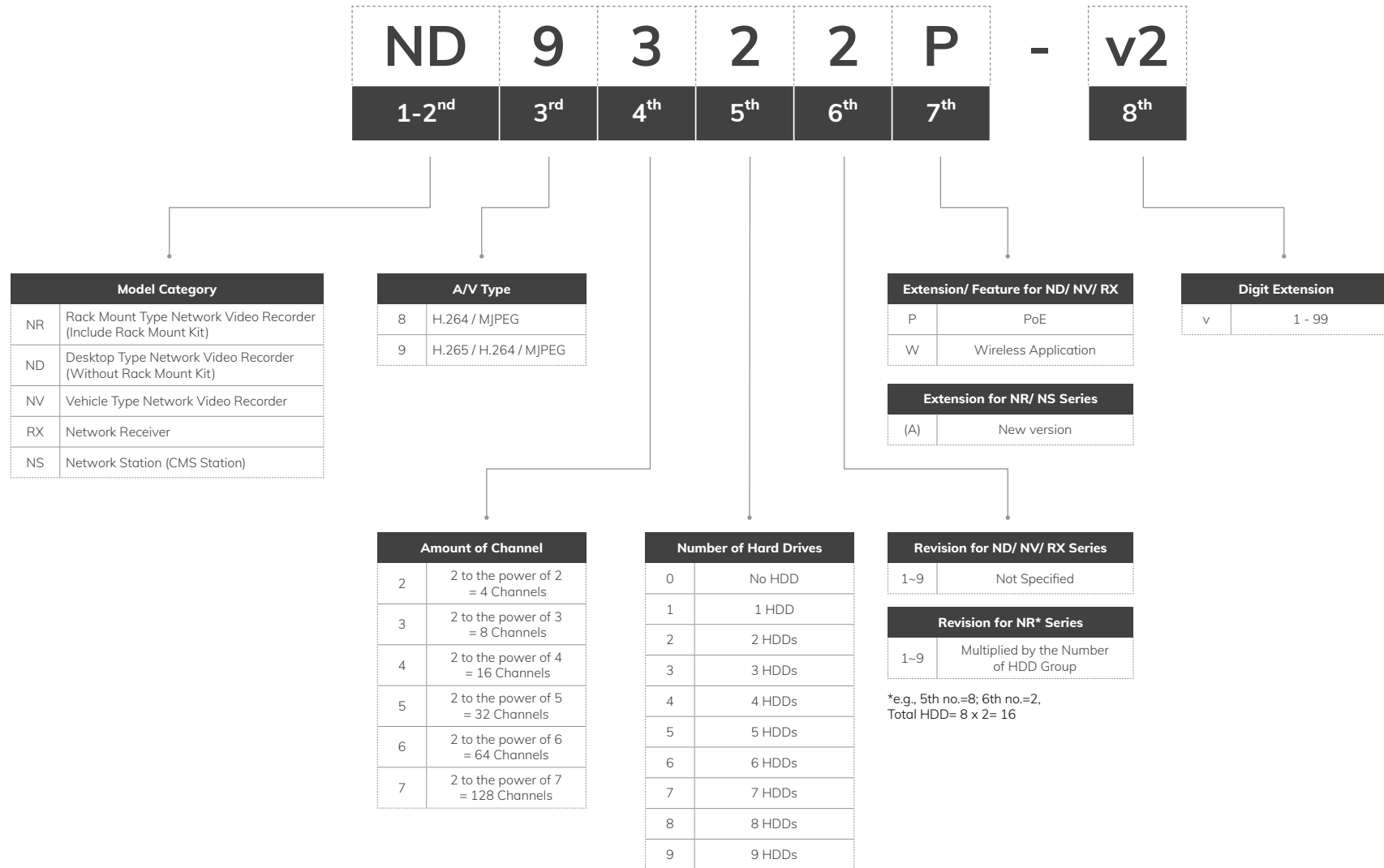
Product Edition	VSS Lite	VSS Standard	VSS Professional
Product Overview	Free entry-level VMS for basic surveillance needs	Cost-effective solution for small and mid-size business	Designed for mid-size to large-scale projects requiring central management and 24/7 operations
Deployment			
Maximum Number of Cameras Per Server	32	256	320
Maximum Number of Clients Per Server		200	
Maximum Number of Simultaneous Video Streaming Output Per Server		2048	
Maximum Number of Substations Per System	0	64 (ND/NV series NVR)	700 (ND/NV series NVR, VSS Pro NR series NVR, VSS Professional Station)
Maximum Number of Cameras Per System	32	256	22,400
Key Features			
Live view	✓	✓	✓
Recording	✓	✓	✓
Playback	✓	✓	✓
Backup	✓	✓	✓
Event	✓	✓	✓
Dashboard	✓	✓	✓
Alarms	-	✓	✓
E-map	-	✓	✓
VCA(Counting) Report	-	✓	✓
Video Wall (Matrix)	-	-	✓
Search			
Bookmark Search	✓	✓	✓
Event Search	✓	✓	✓
Alarm Search	-	✓	✓
Smart Search	-	✓	✓
Deep Search	Object Search	-	✓
	Attribute Search	-	✓
	Scene Search	-	✓
	Re-Search	-	-
	Case Vault	-	-



Product Edition	VSS Lite	VSS Standard	VSS Professional
Product Overview	Free entry-level VMS for basic surveillance needs	Cost-effective solution for small and mid-size business	Designed for mid-size to large-scale projects requiring central management and 24/7 operations
User Management			
User Role	Administrator	✓	✓
	Customizable	✓	✓
	User Pre-defined	-	✓
Video Encryption			
Digital Watermark	✓	✓	✓
Exported Video Encryption		V (AES-256 CTR)	
Recording Encryption	-	-	V (AES-256 CTR)
Export			
Exported Video Mask	-	-	✓
Device Compatibility			
Camera		VIVOTEK 9000 series	
3rd Party Video Source	-	ONVIF, RTSP	ONVIF, RTSP
Substation	-	VIVOTEK ND/NV 9000 series NVR	VIVOTEK ND/NV 9000 series NVR, VSS NR series NVR, VSS Professional Station
Joystick	-	✓	✓
Network Audio Device	-	✓	✓
Wiegand Converter	-	✓	✓
I/O Box	-	✓	✓
Access Control	-	✓	✓
Managed PoE Switch	-	VIVOTEK L2 series, VIVOTEK Lite Managed series	VIVOTEK L2 series, VIVOTEK Lite Managed series
Integration			
Data Magnet	-	✓	✓
TCP Message	-	✓	✓
Failover			
CMS Failover	-	-	✓
Substation Failover	-	-	✓

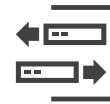
Network Video Recorders

Naming Rule



Recording Server

Super and Outstanding Performance
Video Recorder for Large Scale Systems



Hot-Swappable HDD

Supports hot-swappable HDD bays with RAID 0/1/5/6/10/50/60, and NVR failover for reliable and secure recording data.



Built-in License with VSS Pro

Built-in license with VIVOTEK VAST Security Station Professional edition. Ready-to-go functionality with essential features, including 3rd Party Integration, Matrix, GIS, GPS Failover for CMS, and substation.



Deep Search with VSS Pro

With VIVOTEK VAST Security Station Professional edition to support Deep Search, quickly locating people and vehicles within recorded footage using attributes, trajectories, and even similar appearances.



Reliable Surveillance with Failover

Experience a secure and stable monitoring atmosphere with the Supreme series, featuring Failover for continuous operation.



NR9682-V3



NR9581-V3

Model	NR9682-V3	NR9581-V3
Type	Recording Server	
Display		
Channels	64 channels (expandable to 192-CH)	32 channels (expandable to 128-CH)
Video Output	HDMI/DP/DVI/VGA	HDMI/DP/DVI/VGA
Display Resolution	HDMI: 4096x2160/ DP: 7680x4320 DVI: 1920x1200/ VGA: 1920x1200	HDMI: 4096x2160/ DP: 7680x4320 DVI: 1920x1200/ VGA: 1920x1200
Fisheye Dewarp	10, 1P, 1R, 1O3R, 4R, 2P, 4R Pro, 1O8R	10, 1P, 1R, 1O3R, 4R, 2P, 4R Pro, 1O8R
Video/ Record		
Video Compression	H.265/H.264/MJPEG/MPEG4	H.265/H.264/MJPEG/MPEG4
Max. Decoding Capability	H.264: 1920x1080 @ 360 fps H.265: 1920x1080 @ 180 fps	H.264: 1920x1080 @ 360 fps H.265: 1920x1080 @ 180 fps
Decoding Resolution (Local)	Up to 7680x2560	Up to 7680x2560
Recording Throughput	512 Mbps	512 Mbps
Storage/ General		
Hard Disk	3.5" SATA HDD*16 (Hot Swappable)	3.5" SATA HDD*8 (Hot Swappable)
RAID	RAID 0, 1, 5, 6, 10	RAID 0, 1, 5, 6, 10, 50, 60
Connectors	Ethernet 10/100/1000 RJ45 * 2 USB 2.0 x2, USB 3.0 x4 Microphone Audio Jack Input x1 3.5 Line Output Audio Jack x1	2.5 Gigabit Ethernet (RJ-45) x2 USB 2.0 x4, USB 3.2 x4 Microphone Audio Jack Input x1 3.5 Line Input Audio Jack x1 3.5 Line Output Audio Jack x1
Power Input	Redundant Power AC 100 ~ 240V/ 50 ~ 60Hz	Redundant Power AC 100 ~ 240V
Power Consumption	Max. 920 W	Max. 550 W
Installation, Management, and Maintenance	VSS Pro, Shepherd	VSS Pro, Shepherd
Dimensions	437 x 647 x 132 mm	437 x 647 x 89 mm
Advanced Features		
Cybersecurity Management	●	●
Data Magnet	●	●
Failover	●	●
LPR Solution	●	●
Smart VCA Event	●	●
Smart Search II	●	●
Deep Search	●	●
NDAA Compliance Product	●	●

Core+ AI series

Simple to Navigate but Versatile



Core+ AI

VIVOTEK Core+ AI supporting Deep Search and Smart VCA, offering a faster and smarter user experience.



Dewarp Mode in Local and Web Client

Versatile NVR supports fisheye camera dewarp, offering multiple display modes from any angle for monitoring live view and playback.



Secure Connection & Reliable Compliance

No More Plug-in, Chrome Browser Supported, and Versatile NVR all NDAA compliant and have cyber protection via Trend Micro.



Centralized Operation with Multiple NVRs

Simplify operations across multiple network recorders with VIVOTEK video management software – VAST Security Station. Enjoy centralized operation and seamless notifications all in one place.



ND9442P/ ND9542P



ND9326P/ ND9426P

Type	Network Video Recorder	
Local Display		
Channels	Up to 16/32 channels	Up to 8/16 channels
Video Output	HDMI/VGA	HDMI/VGA
Display Resolution	3840x2160/ 1920x1080/ 1280x720	3840x2160/ 1920x1080/ 1280x720
Fisheye Dewarp	Local: 10,1P,1R,1O3R,1O8R, 1P3R Web: 10, 1R, 1P	Local: 10,1P,1R,1O3R,1O8R, 1P3R Web: 10, 1R, 1P
Video/ Record		
Video Compression	H.265/H.264/MJPEG	H.265/H.264/MJPEG
Max. Decoding Capability	H.265/H.264: 3840x2160 @ 90 fps	H.265/H.264: 3840x2160 @ 120 fps
Decoding Resolution (Local)	Up to 7680x2560	Up to 7680x2560
Recording Throughput	192 Mbps	192 Mbps
Storage/ General		
Hard Disk	3.5" SATA HDD*4	3.5" SATA HDD*2
RAID	RAID 0, 1, 5	RAID 0, 1
PoE	16x 802.3at/af Compliant PoE Ports (Total Max. 200 W)	8/16x 802.3at/af Compliant PoE Ports (Total Max. 120 W/200 W)
Connectors	Ethernet 10/100/1000 RJ45 *2 Alarm In *16, Alarm Out *8 USB 2.0 *2, USB 3.0 *1 Audio Output *1 Audio Input *1 (Reserved) RS485 (Reserved)	Ethernet 10/100/1000 RJ45 *2 Alarm In *4, Alarm Out *1 USB 2.0 *2, USB 3.0 *1 Audio Output *1 Audio Input *1 (Reserved)
Power Input	AC 100 ~ 240V/ 50 ~ 60Hz	AC 100 ~ 240V/ 50 ~ 60Hz
Power Consumption	Max. 300 W	Max. 190 W/ 270W
Installation, Management, and Maintenance	VSS, VAST 2, Shepherd, VORTEX, iViewer (iOS/Android)	VSS, VAST 2, Shepherd, VORTEX, iViewer (iOS/Android)
Dimensions	432 x 421 x 66 mm	365 x 315 x 44 mm
Advanced Features		
Smart VCA Event Search	●	●
Deep Search	●	●
Cybersecurity Management	●	●
Trend Micro IoT Security	●	●
NDAA Compliance Product	●	●

Network Audio

Effective Action for Proactive Deterrence



Audio for Security

Event-triggered audio announcements to improve property security.



Automated Audio Clips

Support broadcasting live announcements or pre-recorded audio clips automatically when VSS alarm management is triggered.



Loitering Alerts

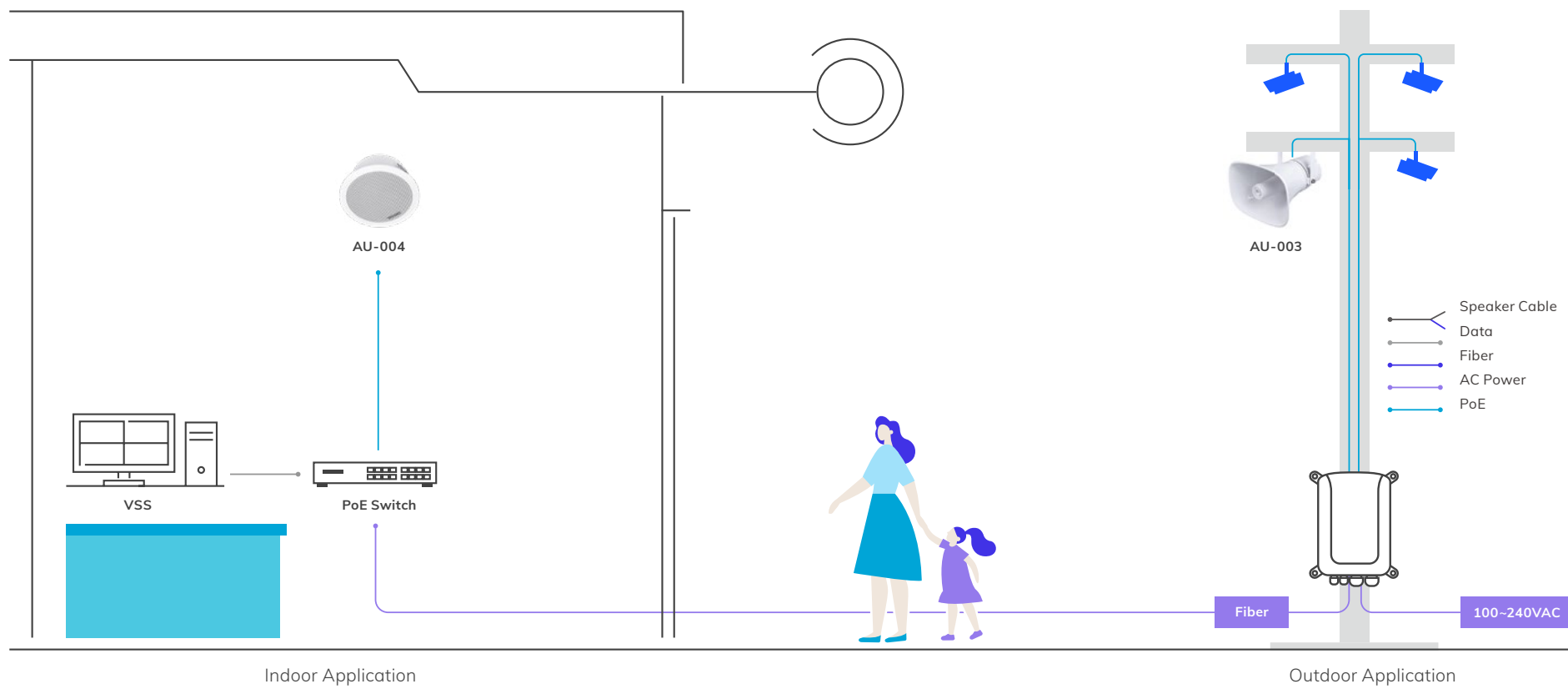
When a person is loitering beyond a preset time limit, an audio warning can be produced.



Deter Crime and Safeguarding

Prevent financial damage from graffiti, breaking and entering, or other criminal acts through proactive audio alarms.

Network Audio Architecture





AU-003

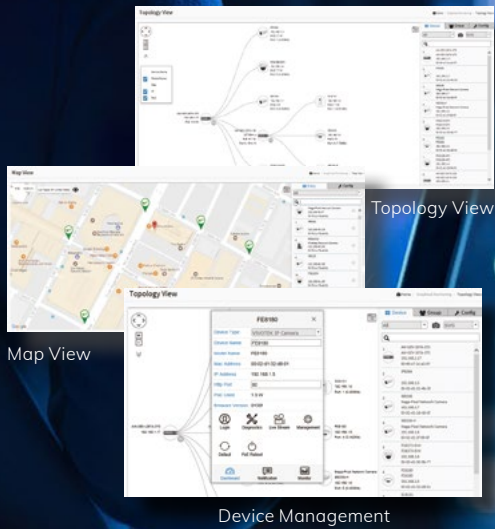


AU-004

Type	Network Horn Speaker	
Product Information		
Rated Impedance	8 ohm	
Average Min. Power	15 W	
Max. Sound Pressure Level	113 dB	96 dB
Microphone	50Hz-20kHz at 1Pa 50cm distance SPL 115dB at 1kHz	
Network		
Supported Protocols	SIP, ONVIF, HTTP, IPv4, DHCP, RTSP, RTP, RTCP, TCP, UDP, ARP, FTP, TFTP, NFS, NTP	
Audio Codec	OPUS 48 kHz, MP3 44.1 kHz, G.722 ADPCM 16 kHz, G.711 PCMU 8 kHz, G.711 PCMA, 8 kHz	
General		
Casing	ABS IP66 water-proof	Metal
Power	PoE, DC 12V	
Operating Temperature	-30°C ~ 60°C (-22°F ~ 140°F)	
Dimensions	225 x 165 x 240 mm	Ø 200 x 90 mm
Weight	1.3 kg	1 kg
Certifications	CE, FCC, VCCI, BSMI	

PoE Network Products

A full range of products designed for video surveillance systems, including power-surge prevention from lightning strikes, network management, multiple topology views of cameras, and more.



Map View

Topology View

Device Management

Intuitively Managing IP Surveillance



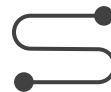
Network & PoE Management

- L2 Network Function
- PoE on/off Control for Each Port
- Cable Diagnostic



Industrial & Outdoor Ready

- Wide Temperature Support
- IP67 and IK10 Certified
- Built-in Surge Protection



Long Range PoE Extension

- 200~300m PoE Delivery
- Support Multiple Cameras with a Single Power Source
- Outdoor-ready Housing

Commercial Series



Model	AW-GTS-287A	AW-GEV-108A-130	AW-GEV-288A-370	AW-GEL-065A-060	AW-GEL-105A-110
Type	10G L2+ Managed Switch		VIVOCAM L2 Managed PoE Switch		Lite Managed PoE Switch
Description	20xGbE SFP 4xCombo GbE 4x10G SFP	2xGbE 90W bt PoE 6xGbE 30W at PoE 2xGbE Combo 1xRJ45 Console Power Budget 130W Extended PoE Mode 250m	4xGbE 90W bt PoE 20xGbE 30W at PoE 4xGbE Combo 1xRJ45 Console Power Budget 370W Extended PoE Mode 250m	4xGbE PoE 2xGbE UTP Per Port Max. 30W Power Budget 60W Extended PoE Mode 250m	2xGbE 90W PoE 6xGbE 30W at 1xGbE UTP 1xGbE SFP Power Budget 110W Extended PoE Mode 250m



Model	AW-GEL-205A-260	AW-GEL-285A-380	AW-FET-060D-065	AW-FGT-100D-120	AW-FGT-180F-250
Type	Lite Managed PoE Switch		Unmanaged FE PoE Switch		
Description	4xGbE 90W PoE 12xGbE 30W at 2xGbE UTP 2xGbE SFP Power Budget 260W Extended PoE Mode 250m	4xGbE 90W PoE 20xGbE 30W at 2xGbE UTP 2xGbE SFP Power Budget 380W Extended PoE Mode 250m	4xFE PoE 2xFE UTP Switch Per Port Max. 30W Power Budget 65W Extended PoE Mode 250m	8xFE PoE 2xGbE Combo Switch Per Port Max. 30W Power Budget 115W Extended PoE Mode 250m	16xFE PoE 2xGbE Combo Per Port Max. 30W Power Budget 250W Extended PoE Mode 250m



Model	AW-FGT-260F-380	AP-GIC-011A-030	AP-GIC-011B-090
Type	Unmanaged FE PoE Switch	PoE Injector	
Description	24xFE PoE 2xGbE Combo Per Port Max. 30W Power Budget 380W Extended PoE Mode 250m	Indoor 1xGbE IEEE 802.3at 30W	Indoor 1xGbE IEEE 802.3bt 90W

Industrial Series



Model **AW-IHT-1271**



Model **AW-IHB-1040**



Model **AW-IHB-0100**



Model **AW-IHS-0202**

Type	Industrial VIVOCAM L2+ Managed PoE Switch	Industrial Lite Managed PoE Switch	Industrial PoE Injector	Industrial Media Converter
Description	Industrial 8xGbE PoE 4xGbE SFP/ Per Port Max. 30W Power Budget 240W	Industrial 2xGbE 802.3bt 90W 6xGbE PoE 2xGbE SFP Power budget 300W	Industrial 1xGbE 802.3bt 90W PoE Injector	Industrial 1xFE 1xFE SFP Media Converter

Long Range Solution



Model **AP-GXC-0100**



Model **AP-GXC-0200**



Model **AP-GXC-0150**



Model **AP-GXC-0250**

Type	PoE Extender			
Description	Indoor 1-Port GbE PoE Extender Inpupt: 15W/30W/60W/90W/95W	Indoor 2-Port GbE PoE Extender Inpupt: 15W/30W/60W/90W/95W	Outdoor 1-Port GbE PoE Extender Inpupt: 15W/30W/60W/90W/95W IP67 IK10	Outdoor 2-Port GbE PoE Extender Inpupt: 15W/30W/60W/90W/95W IP67 IK10

Outdoor Series



Model **AW-GET-083A-120**



Model **AP-PSP-050**

Type	Outdoor Unmanaged PoE Switch	Outdoor PoE Surge Protector
Description	4xGbE PoE 2xGbE UTP 2xGbE SFP	Outdoor PoE Surge Protector 16KV IP67 IK10

PoE Accessories



AT-CAB-001/AT-CAS-001



AT-CAB-002



AT-SUN-001



AT-SUN-002



AT-SWH-000

Type	Cabinet		Cabinet Accessories		
Description	Cabinet/Cabinet for Speed dome (SD936X)	Side-mount Bracket for HLG Series Power Supply	Sunshield for AT-CAx Series Cabinet	Sunshield for AT-CAx AT-CAB-002 Cabinet	Power Safety Kit



AT-SWH-002



AT-PSP-001



AT-WPC-001/ AT-WPC-002



AM-314/ AM-414



DRL-48V120W1EN

Type	Cabinet Accessories				Industrial DIN-Rail Power Supply
Description	Door Open/Close Detection Switch	PoE Surge Protector	M16 Cable Gland for 4-7mm AWG/ for Corrugated Tubing : 5/16"	Pole Mount/ Corner Mount Adapter	Indoor Industrial DIN Rail 43.2-52.8VDC/120W Out -30°C to +70°C (-40°C Cold Start)



DRL-48V240W1EN



HLG-60H-24



HLG-80H-24/HLG-80H-48



HLG-80H-54



HLG-120H-24/HLG-120H-48

Type	Industrial Wall Mount Power Supply				
Description	Indoor Industrial DIN Rail 43.2-52.8VDC/240W Out -30°C to +70°C (-40°C Cold Start)	Outdoor Industrial 24VDC/60W -40°C ~ 70°C IP67	Outdoor Industrial 24VDC/80W or 48VDC/80W -40°C ~ 70°C IP67	Outdoor Industrial 54VDC/80W -40°C ~ 70°C IP67	Outdoor Industrial 24VDC/120W or 48VDC/120W -40°C ~ 70°C IP67



Model HLG-120H-54



Model HLG-240H-24/HLG-240H-54



Model AA-352



Model SFP-1000-MM85-X5



Model SFP-1000-MM13-02

Type	Industrial Wall Mount Power Supply		Outdoor Power Box	SFP Transceiver	
Description	Outdoor Industrial 54VDC/120W -40°C ~ 70°C IP67	Outdoor Industrial 24VDC/240W or 54VDC/240W -40°C ~ 70°C IP67	IP67 IK10 24VAC/6A -40°C ~ 60°C	1.25G Multi-Mode SFP 850nm 0.5KM 0°C ~ 70°C	1.25G Multi-Mode SFP LC 1310nm 2KM 0°C ~ 70°C



Model SFP-1000-MM85-X51 SFP-1000-MM13-02I SFP-1000-SM13-10I/40I SFP-2000-MM85-X3

Type	SFP Transceiver				
Description	1.25G Single-Mode SFP LC 1310nm 10KM or 40KM 0°C ~ 70°C	Industrial 1.25G Multi-Mode SFP LC 850nm 0.5KM -40°C ~ 85°C	Industrial 1.25G Multi-Mode SFP LC 1310nm 2KM -40°C ~ 85°C	Industrial 1.25G Single-Mode SFP LC 1310nm 10KM/40KM -40°C ~ 85°C	10G Multi-Mode SFP+ LC 850nm 0.3KM 0°C ~ 70°C



Model SFP-2000-SM13-10 SFP-1000-CPTX-X1/X1I

Type	SFP Transceiver	
Description	10G Single-Mode SFP+ LC 1310nm 10KM 0°C ~ 70°C	1000BaseT SFP to RJ45 100M 0°C ~ 70°C / -40°C ~ 85°C

* All specifications are subject to change without notice.

Solution Integration Alliance

The SIA (Solution Integration Alliance) Program is a strategic alliance that aims to facilitate the integration of VIVOTEK products into leading software or hardware platforms. With the SIA Program, partners have the flexibility to enhance key functionalities when creating an IP surveillance solution. The SIA Program provides programmable Software Development Kits (SDK) to allow partners to develop customized features on an open platform, allowing the highest possible level of integration. VIVOTEK also provides technical support throughout the development process.

Find out more about enrolling in the VIVOTEK SIA Program, please email sia@vivotek.com for more information.





VIVOTEK

A Delta Group Company

Distributed by:



SUMA SOLUTIONS SP Z O.O.
Panewnicka 109 40-761 Katowice
biuro@vivotek.pl

www.vivotek.com

VIVOTEK Inc.

6F, No.192, Liancheng Rd., Zhonghe Dist.,
New Taipei City 235, Taiwan
| **T** +886-2-82455282 | **E** sales@vivotek.com

VIVOTEK Japan

〒 105-0012 東京都港区芝大門 2-1-14,
デルタ芝大門ビル
| **T** +81-3-5733-1280 | **E** salesjp@vivotek.com

VIVOTEK USA

2050 Ringwood Avenue, San Jose, CA 95131
| **T** 408-773-8686 | **E** salesusa@vivotek.com

VIVOTEK India

602, Best Sky Tower, Plot No. F-5, Netaji Subhash Place,
Pitampura, New Delhi-110034
| **T** +91-11-45137465 | **E** salesindia@vivotek.com

VIVOTEK EMEA

Zandsteen 15, 2132 MZ Hoofddorp,
The Netherlands
| **T** +31(0)20-800-3817 | **E** saleseurope@vivotek.com

VIVOTEK LATAM

Av. Pdte. Masaryk 101, Piso 10 Oficina 1002, Polanco V Sección,
11560, Miguel Hidalgo, CDMX.
| **T** +52 55 5531 4184 | **E** saleslatam@vivotek.com

