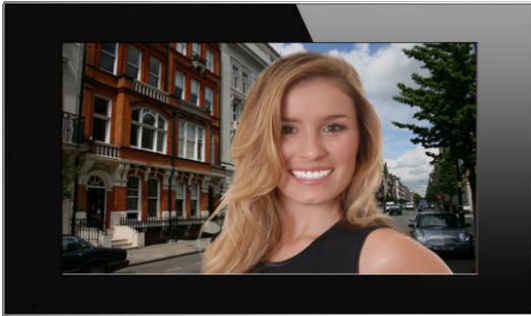




### AT700MSE 7.0" Color AlphaTouch™ IP Video-Intercom Monitor



#### ARCHITECTS' AND ENGINEERS' SPECIFICATIONS

The hands-free type IP color video-intercom touchscreen monitor station(s) shall be Alpha Communications® AT700MSE AlphaTouch™ series, or approved equal. Monitor(s) shall be wall mounted (or desk mounted using optional #ATDS700B desk adapter). Monitor(s) shall be connected using a standard RJ45 connector and LAN wiring, by connecting to a PoE switch output or PoE injector. Monitor(s) shall include a high quality 7.0" color TFT LCD capacitive touchscreen. Monitors using mirrors or other non-flat type screens, or coaxial cable shall not be acceptable.

Monitor(s) shall feature exceptional enhanced duplex digital voice fidelity with echo canceling processor. Monitor shall include an on-screen display (OSD) and graphic user interface (GUI) that is programmable based on unit's firmware. Monitor shall feature an electronic calling signal and shall only protrude from the wall 0.63" inches (17mm). Monitor(s) shall include the ability for resident's to place a panic call to the model AT700DM concierge station, where needed.

Contractor shall observe all local and national electrical and building codes.

#### AT700MSE 7.0" COLOR ALPHATOUCH™ IP VIDEO-INTERCOM MONITOR

The Alpha Communications® AT700MSE AlphaTouch™ series hands free type 7.0" touchscreen IP color monitors provides the most advanced video-intercom system available, for any size building, with any number of monitors, door stations, and remote cameras. The AT700MSE is a SIP-enabled indoor monitor for multi-functional communications. At the core of the AT700MSE is a large capacitive touchscreen and intuitive Android operating system.

These attractive monitors are conveniently mounted right on the wall and only protrude 0.63"! Due to its advanced design and TCP/IP protocol, the AT700MSE does not require any servers, power supplies, switchers, boosters, video distributors, and requires simply a LAN connection and the PoE switch(es).

All AT700MSE monitors feature a crystal clear 7.0" color TFT LCD capacitive touchscreen monitor (measured diagonally), electronic call signaling, enhanced echo-cancellation duplex type hands-free voice with door release capability and other functions based on the unit's firmware.

The AT700MSE is a sleek, stylish IP monitor of superior quality, manufactured in anodized aluminum. Its multi-channel capability virtually eliminates busy signals on the system.

#### FEATURES

- 7.0" (diagonal) Crystal Clear Color TFT LCD Capacitive Touch Video Screen
- 1024 x 600 resolution Brightness: 300nits 800:1 Contrast 16M colors up to 720p
- Uses simple CAT5 / CAT6 LAN wiring and RJ45 connectors - 10/100 Mbps Ethernet
- Monitors are connected to a PoE switch output or PoE injector (PoE IEEE802.3af)
- Enhanced Duplex Hands-free Digital Voice Operation with echo canceling processor
- Easy Installation (surface or optional desk using ATDS700B adapter)
- SIP v1 (RFC2543) SIP v2 (RFC3261) - Static IP or DHCP
- Rugged and Reliable. Simple to Operate
- Call Relay to activate strobe and/or buzzer for sight/hearing impaired tenants
- Low profile surface monitor protrudes only 0.75" from wall
- Intuitive Graphic User Interface (GUI)
- US or European electrical wall box mounting
- Call to any concierge station and optional panic call
- Multi-talkpath system with a simultaneous voice talk path from every door station and concierge station

#### SPECIFICATIONS

<b>Dimensions:</b>	All <b>AT700MSE</b> monitors are 7.88"W (201mm) x 5.25"H (134mm) x 0.63"D (17mm). All dimensions shown are outside dimensions for the surface type monitor.
--------------------	---

---

**Alpha Communications**

42 Central Drive • Farmingdale • NY • 11735-1202 • Phone: (631) 777-5500 • Fax: (631) 777-5599  
TOLL-FREE: (800) 666-4800 • Web: [www.alphacommunications.com](http://www.alphacommunications.com) • Email: [info@alphacommunications.com](mailto:info@alphacommunications.com)

Copyright© 1998-2023 Alpha Communications® - All Rights Reserved.

Due to continuous product improvement, all colors, sizes, materials, finishes and specifications are subject to change without notice.