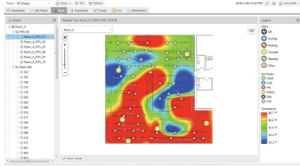


# Product data sheet

Specifications



## EcoStruxure IT Advisor: Cooling Optimize Temperature Sensor

CLTEMP

⚠ To be discontinued on: Jun 30, 2025

⚠ To be end-of-service on: Jul 15, 2025

⚠ To be discontinued

### Overview

Lead time Usually in Stock

### Main

Product or Component Type Sensor

### Packing Units

Unit Type of Package 1 PCE

Number of Units in Package 1 1

Package 1 Height 2.01 in (5.098 cm)

Package 1 Width 9.25 in (23.495 cm)

Package 1 Length 6.25 in (15.875 cm)

Package 1 Weight 16.01 oz (454 g)

### Contractual warranty

Warranty 2 Years

Price is "List Price" and may be subject to a trade discount – check with your local distributor or retailer for actual price.


## Environmental Data

Schneider Electric aims to achieve Net Zero status by 2050 through supply chain partnerships, lower impact materials, and circularity via our ongoing “Use Better, Use Longer, Use Again” campaign to extend product lifetimes and recyclability.


[Environmental Data explained >](#)

[How we assess product sustainability >](#)

### Use Better

 <b>Materials and Substances</b>	
Packaging made with recycled cardboard	No
Packaging without single use plastic	No
EU RoHS Directive	Not applicable, out of EU RoHS legal scope

### Use Again

 <b>Repack and remanufacture</b>	
Take-back	No